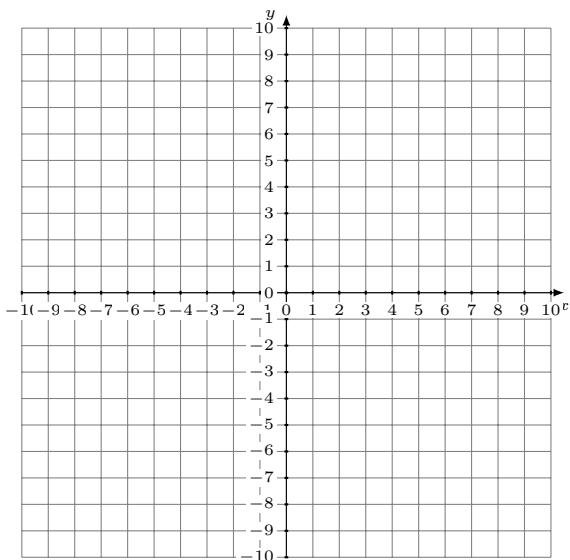


Dependent Linear Systems (J)

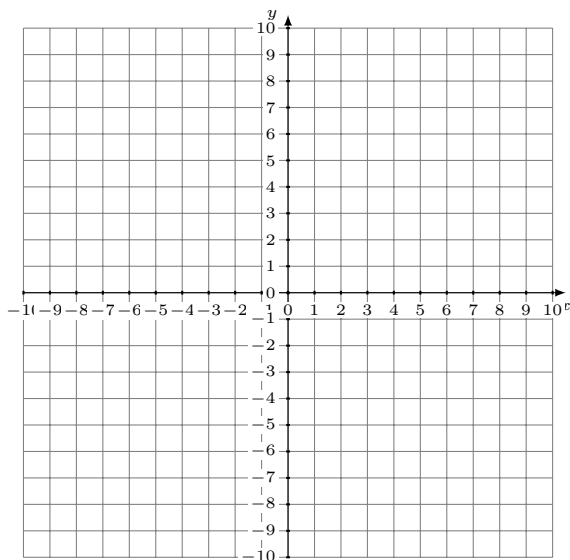
Graph each system and identify the dependent system.

1. $y = \frac{1}{4}x - 1$
 $x + 2y = 10$



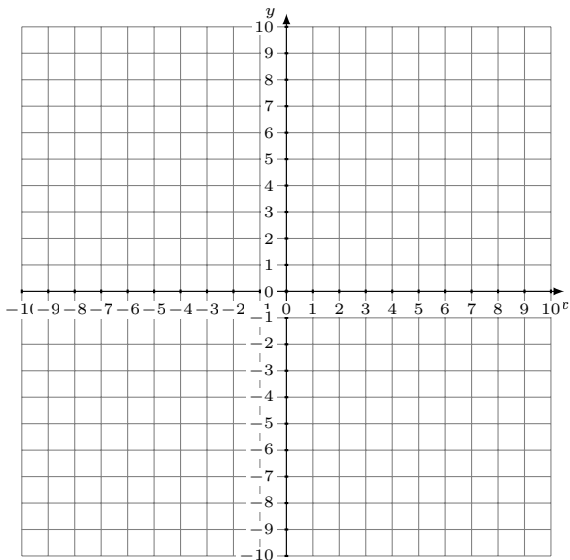
Solution: (____,____)

2. $y = \frac{1}{5}x - 6$
 $x - y = 2$



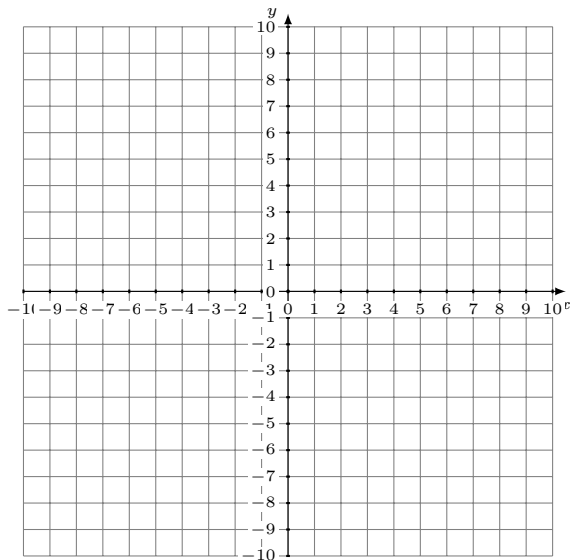
Solution: (____,____)

3. $y = \frac{1}{4}x - 7$
 $x + 2y = -8$



Solution: (____,____)

4. $y = \frac{7}{3}x + 1$
 $7x - 3y = -3$

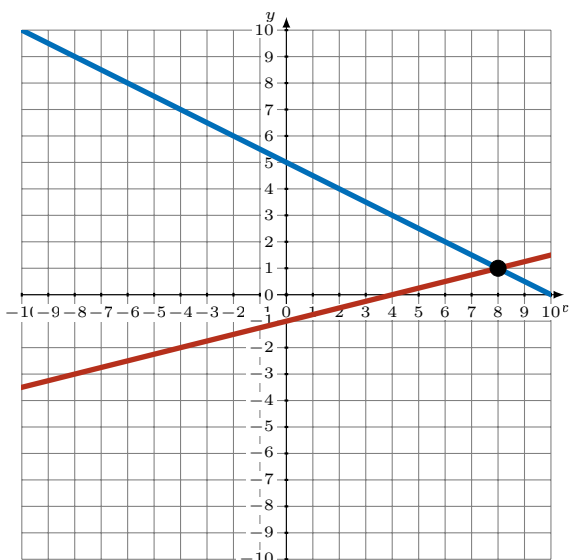


Solution: (____,____)

Dependent Linear Systems (J) Answers

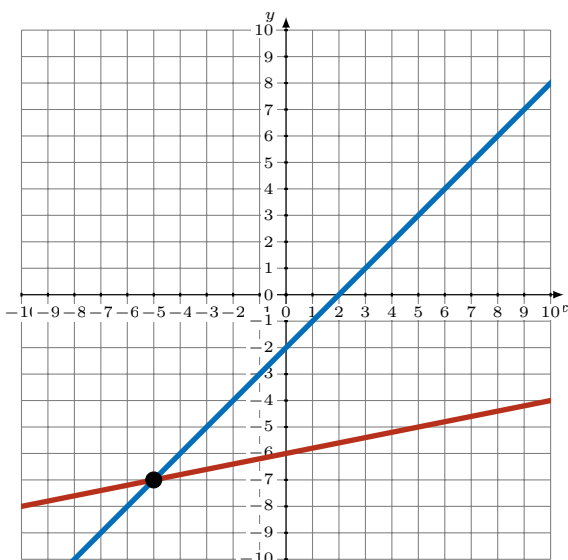
Graph each system and identify the dependent system.

1. $y = \frac{1}{4}x - 1$
 $x + 2y = 10$



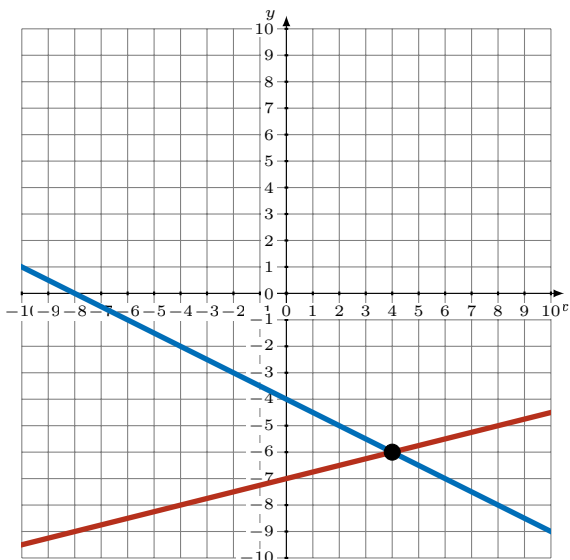
Solution: (8,1)

2. $y = \frac{1}{5}x - 6$
 $x - y = 2$



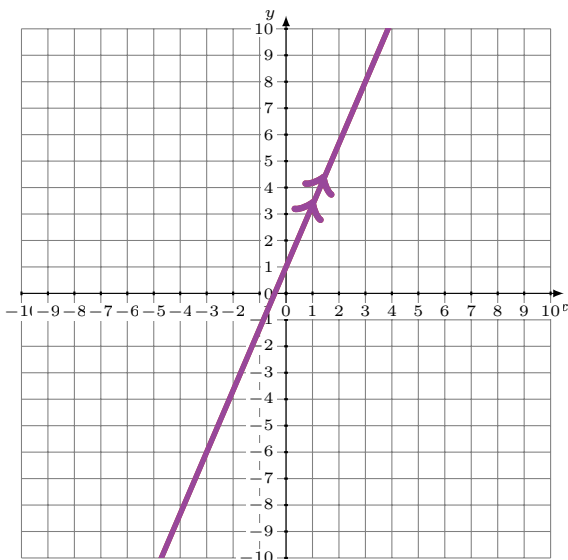
Solution: (-5,-7)

3. $y = \frac{1}{4}x - 7$
 $x + 2y = -8$



Solution: (4,-6)

4. $y = \frac{7}{3}x + 1$
 $7x - 3y = -3$



Solution: Infinite Solutions (Dependent)