

# Graphing Linear Systems (G)

Graph each system and identify its solution.

1.  $y = -\frac{1}{8}x + 1$   
 $y = -\frac{3}{8}x - 1$



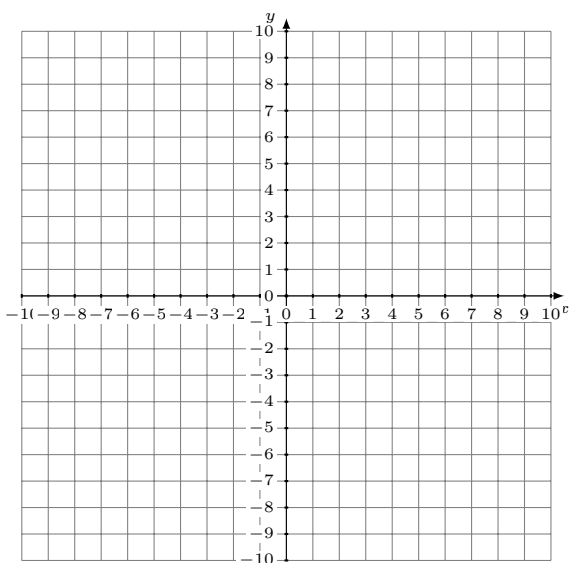
Solution: (----,----)

2.  $y = 14x - 6$   
 $y = 6x + 2$



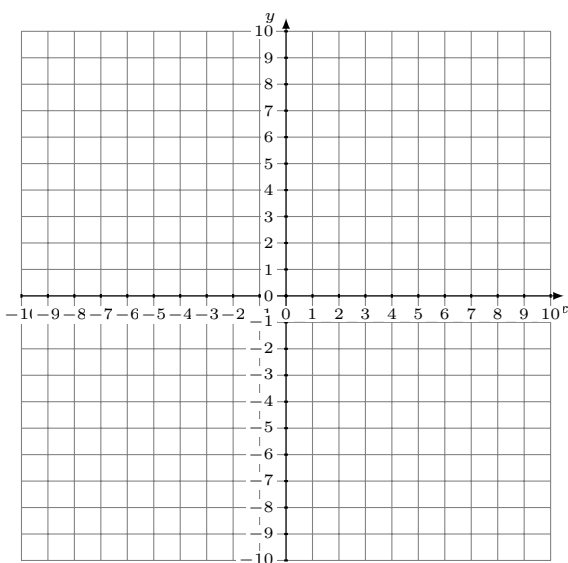
Solution: (----,----)

3.  $y = -\frac{3}{2}x + 6$   
 $y = 3x - 3$



Solution: (----,----)

4.  $y = -4x - 8$   
 $y = 12x + 8$

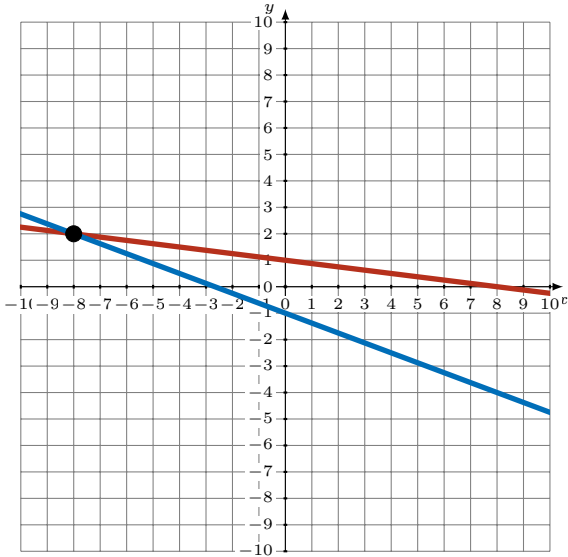


Solution: (----,----)

# Graphing Linear Systems (G) Answers

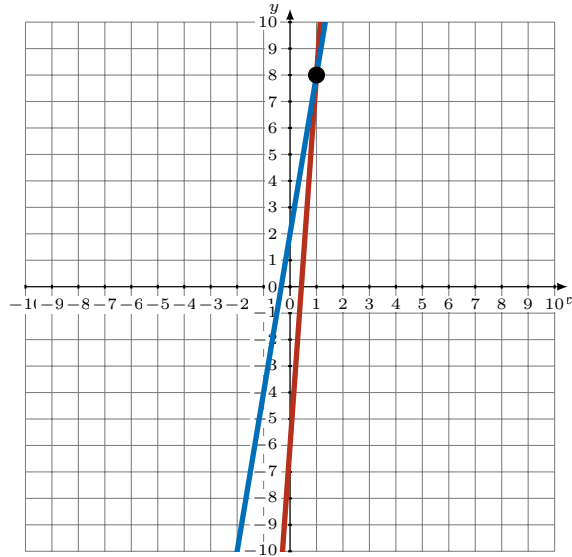
Graph each system and identify its solution.

1.  $y = -\frac{1}{8}x + 1$   
 $y = -\frac{3}{8}x - 1$



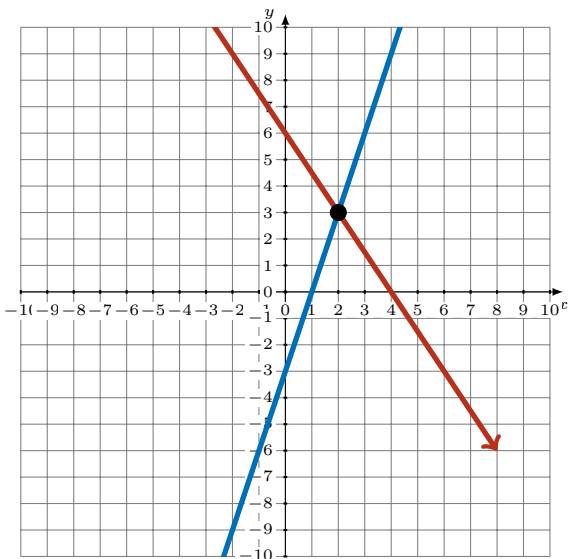
Solution: (-8,2)

2.  $y = 14x - 6$   
 $y = 6x + 2$



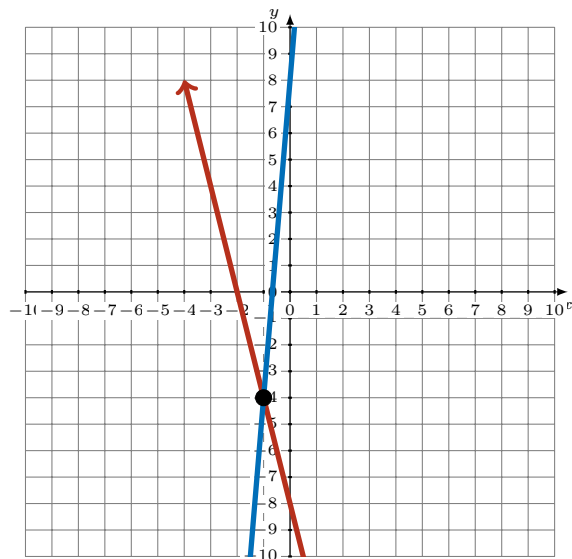
Solution: (1,8)

3.  $y = -\frac{3}{2}x + 6$   
 $y = 3x - 3$



Solution: (2,3)

4.  $y = -4x - 8$   
 $y = 12x + 8$



Solution: (-1,-4)