

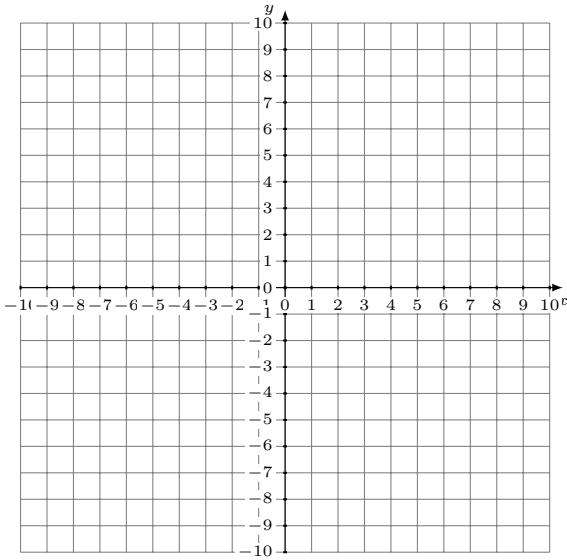
Linear Equation from Two Points (E)

Plot a line through the two points then determine the equation for the line.

1.

A(4,-2)

B(6,-3)

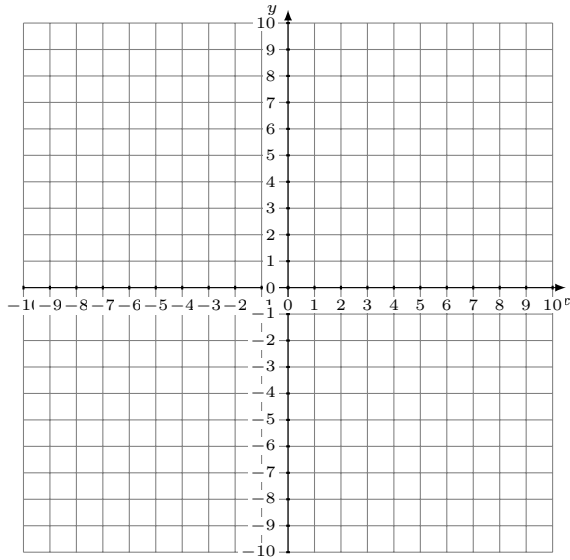


Equation: $y =$

2.

A(-4,3)

B(-2,5)

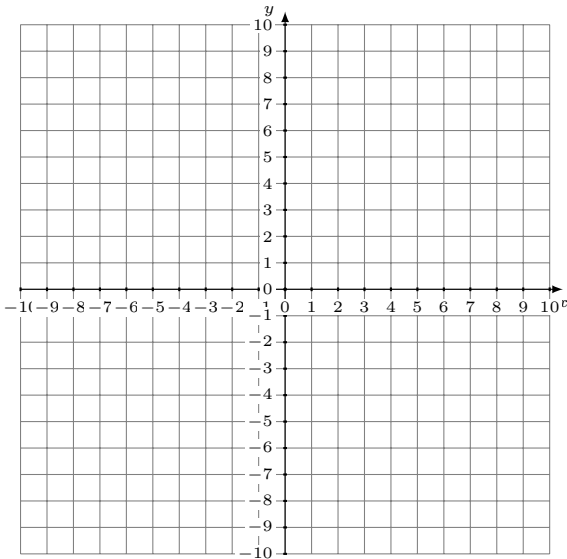


Equation: $y =$

3.

A(-1,-5)

B(-3,-5)

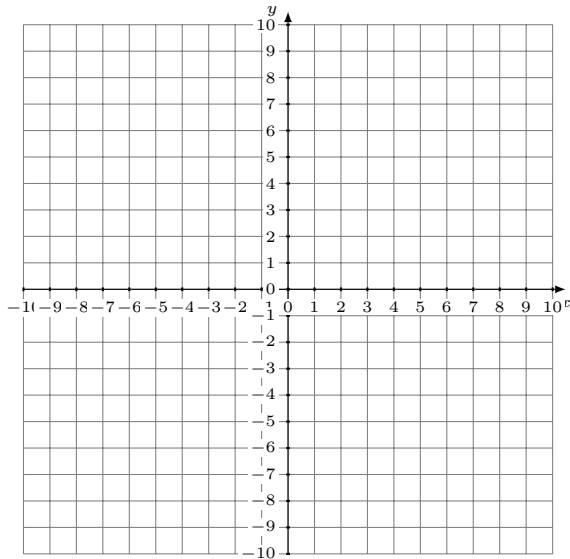


Equation: $y =$

4.

A(-3,0)

B(-9,-8)

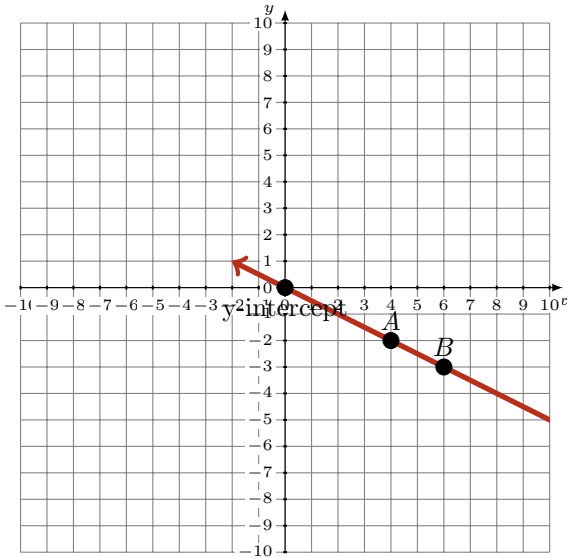


Equation: $y =$

Linear Equation from Two Points (E) Answers

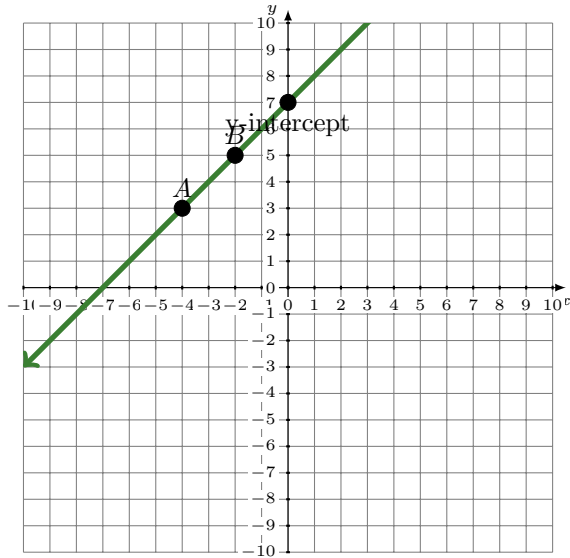
Plot a line through the two points then determine the equation for the line.

1. A(4,-2)
 B(6,-3)



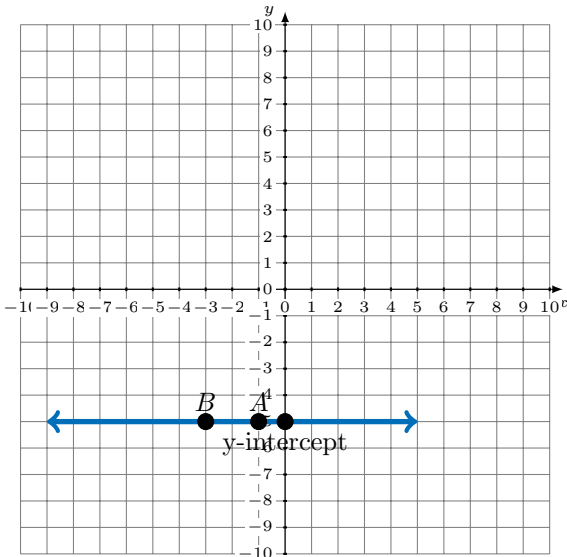
Equation: $y = -\frac{1}{2}x - 1$

2. A(-4,3)
 B(-2,5)



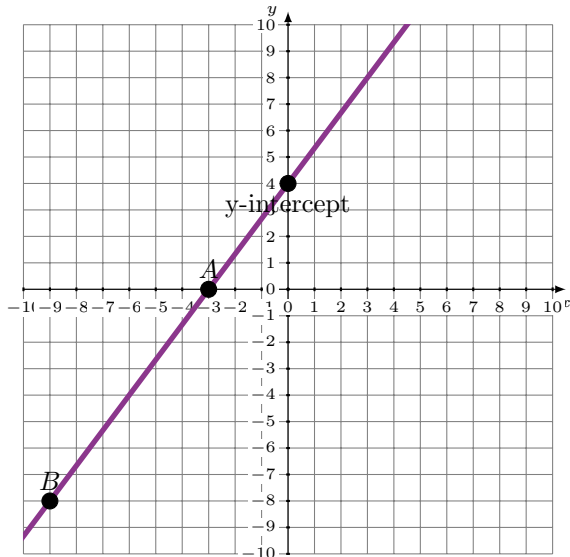
Equation: $y = x + 7$

3. A(-1,-5)
 B(-3,-5)



Equation: $y = -5$

4. A(-3,0)
 B(-9,-8)



Equation: $y = \frac{4}{3}x + 4$