

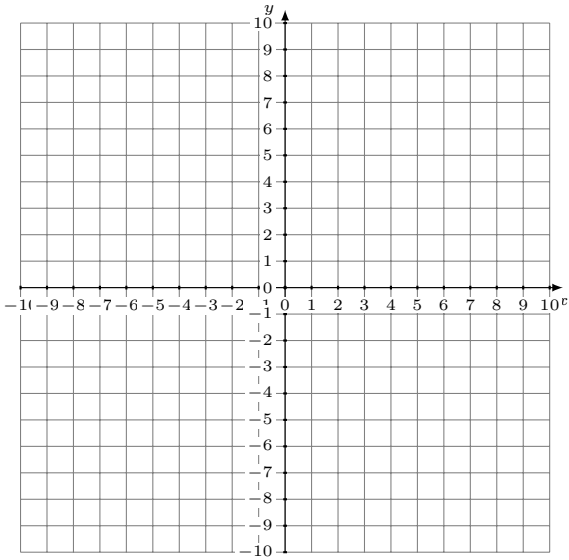
Linear Equation from Two Points (G)

Plot a line through the two points then determine the equation for the line.

1.

A(-1,2)

B(1,8)

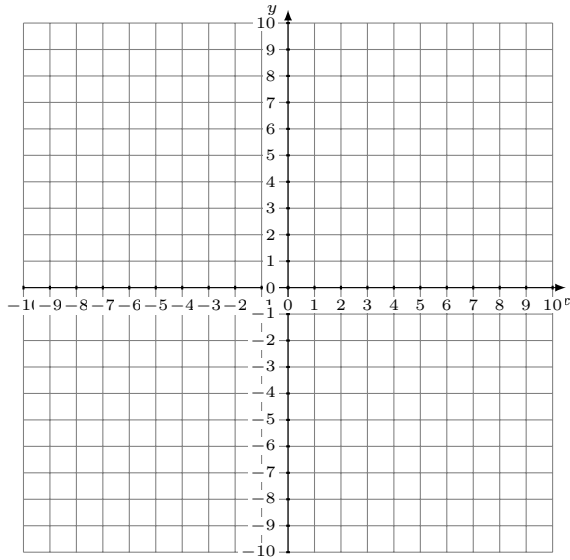


Equation: $y =$

2.

A(-3,-9)

B(-4,-9)

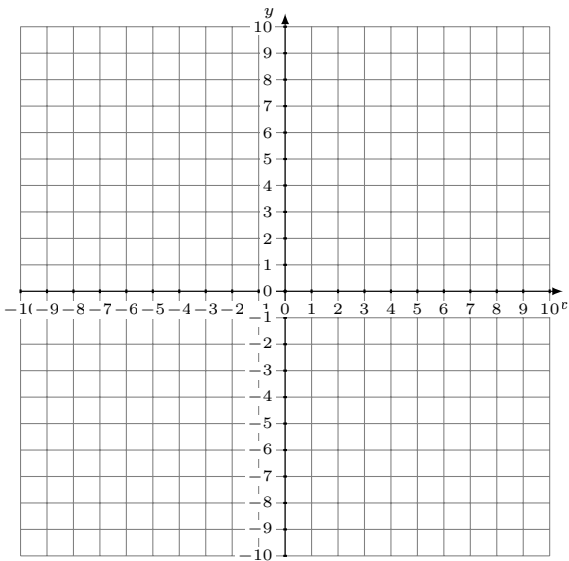


Equation: $y =$

3.

A(1,7)

B(3,5)

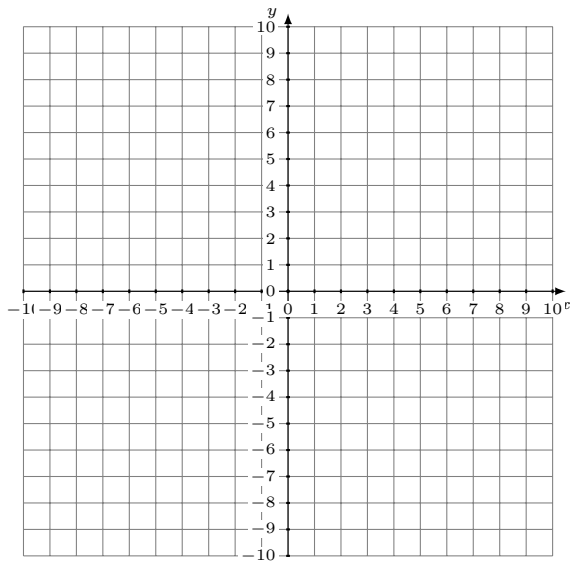


Equation: $y =$

4.

A(5,-8)

B(0,-9)



Equation: $y =$

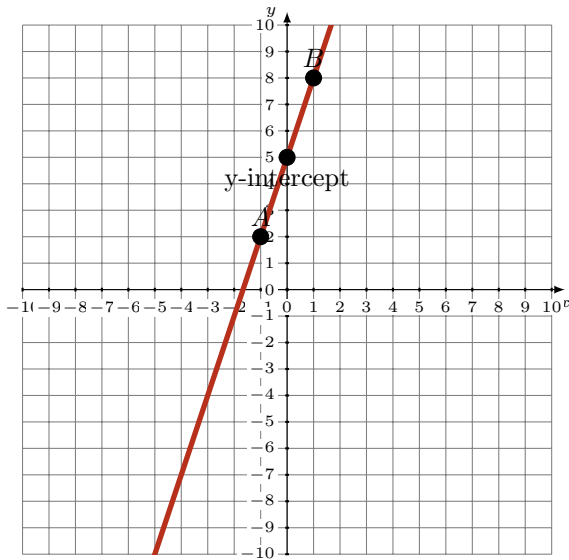
Linear Equation from Two Points (G) Answers

Plot a line through the two points then determine the equation for the line.

1.

A(-1,2)

B(1,8)

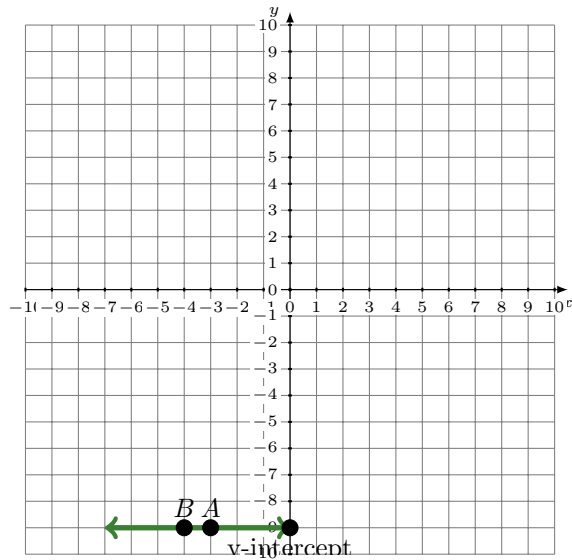


Equation: $y = 3x + 5$

2.

A(-3,-9)

B(-4,-9)

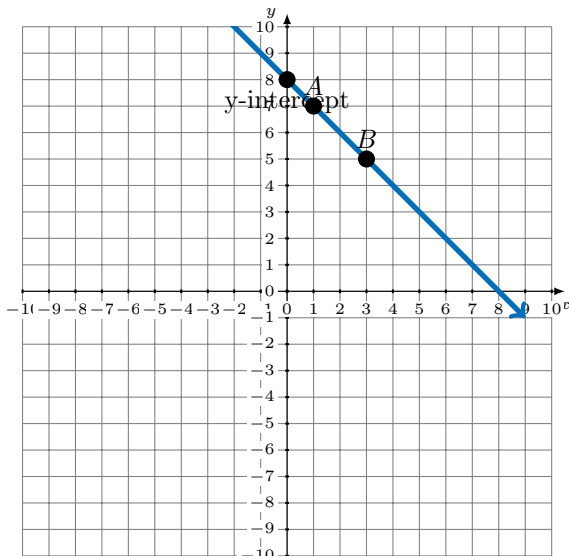


Equation: $y = -9$

3.

A(1,7)

B(3,5)

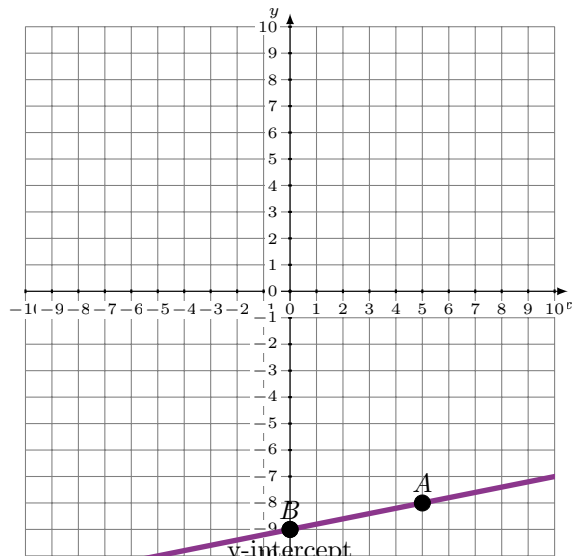


Equation: $y = -x + 8$

4.

A(5,-8)

B(0,-9)



Equation: $y = \frac{1}{5}x - 9$