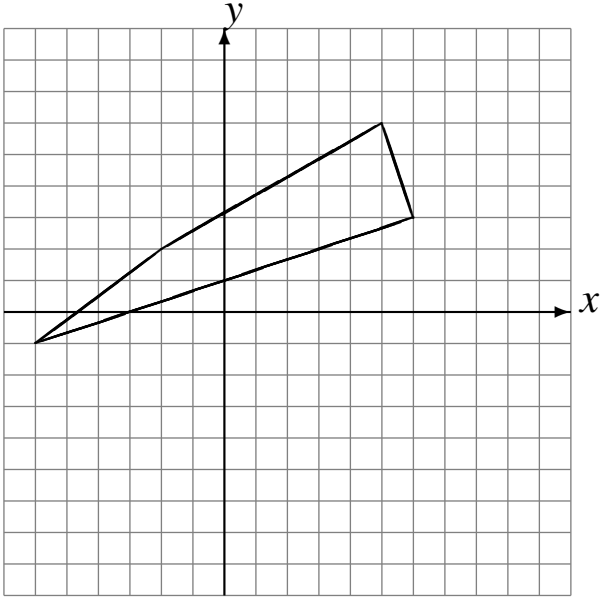


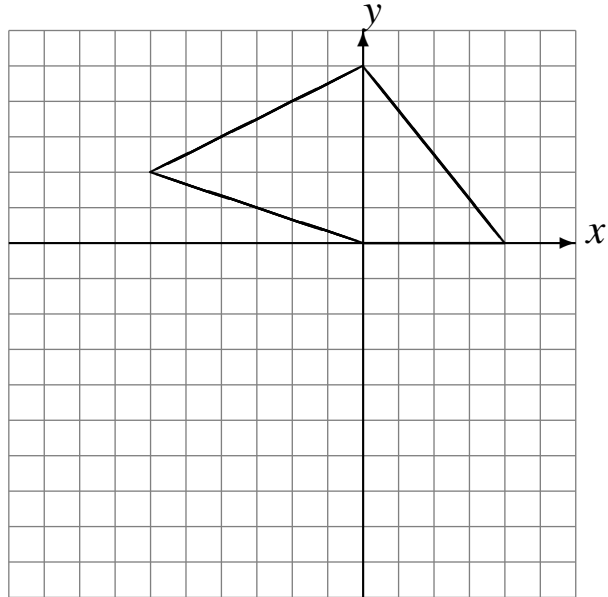
Translations (B)

Draw the intermediate and translated images.

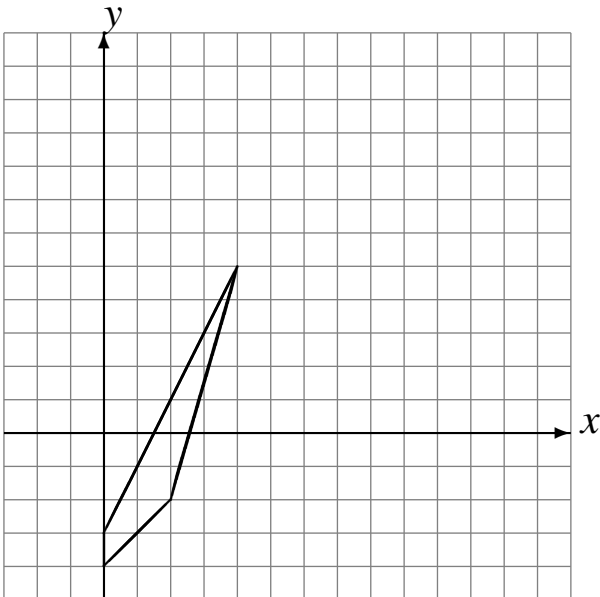
Translate by $(4, -6)$.
Translate by $(-1, 1)$.



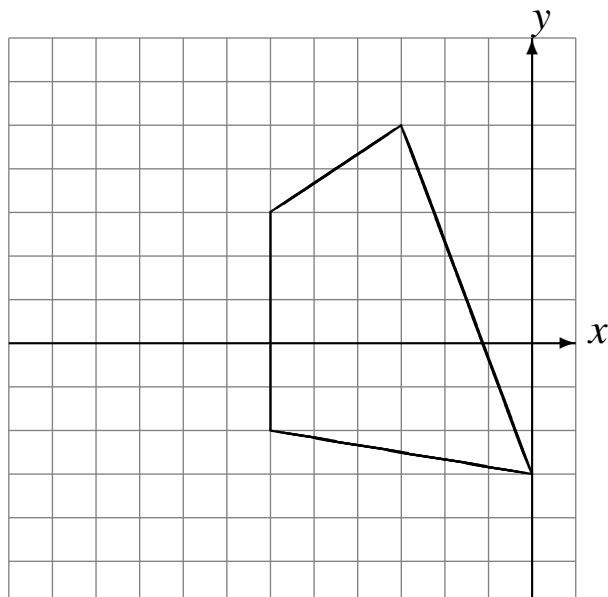
Translate by $(-2, -3)$.
Translate by $(-1, -6)$.



Translate by $(2, 4)$.
Translate by $(4, 2)$.



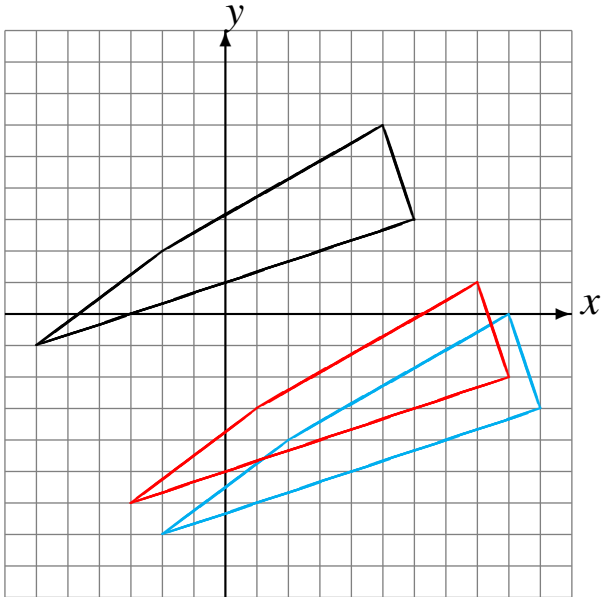
Translate by $(-5, 0)$.
Translate by $(4, -2)$.



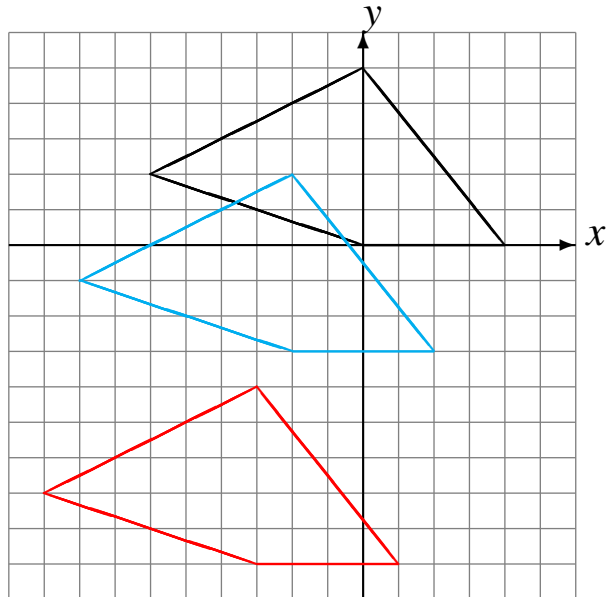
Translations (B) Answers

Draw the intermediate and translated images.

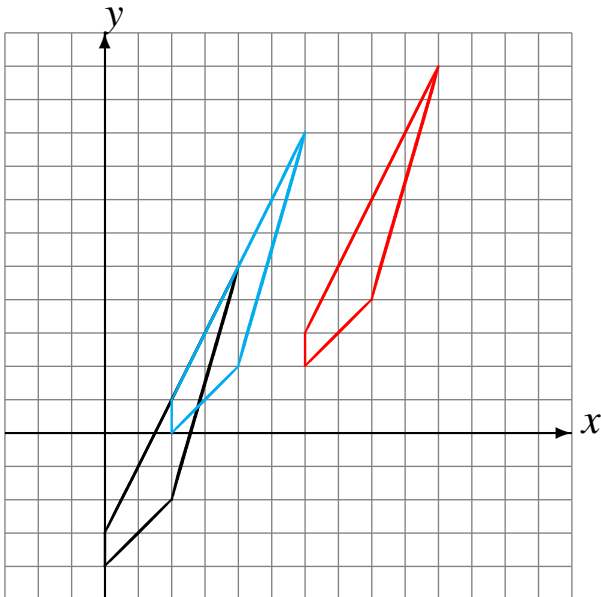
Translate by $(4, -6)$.
Translate by $(-1, 1)$.



Translate by $(-2, -3)$.
Translate by $(-1, -6)$.



Translate by $(2, 4)$.
Translate by $(4, 2)$.



Translate by $(-5, 0)$.
Translate by $(4, -2)$.

