

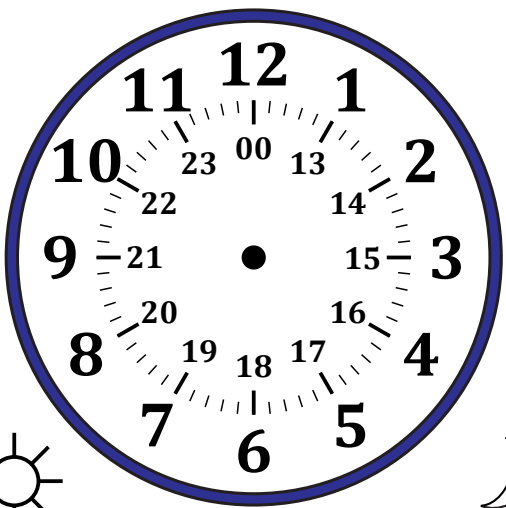
Sketching Time on Analog Clocks (B)

Name: _____

Date: _____

Sketch each time on the clock face above it.

1.



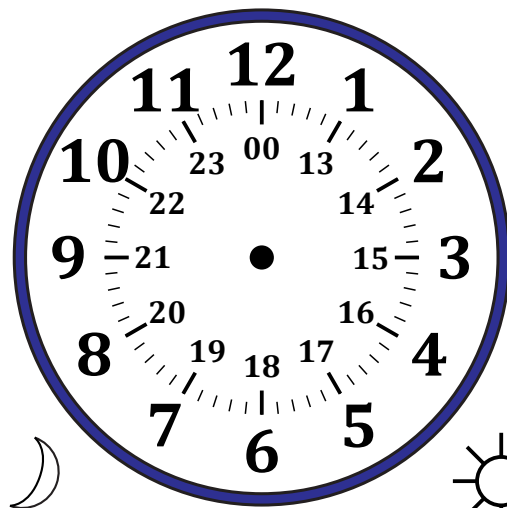
22:07

Noon

Midnight

Detailed description: A circular analog clock face with numbers 1-12 and minute markers. The time 22:07 is written below the clock. A sun icon is on the left and a moon icon is on the right.

2.



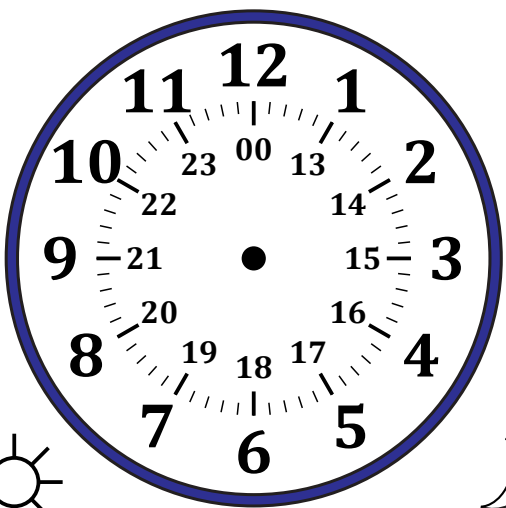
02:27

Midnight

Noon

Detailed description: A circular analog clock face with numbers 1-12 and minute markers. The time 02:27 is written below the clock. A moon icon is on the left and a sun icon is on the right.

3.



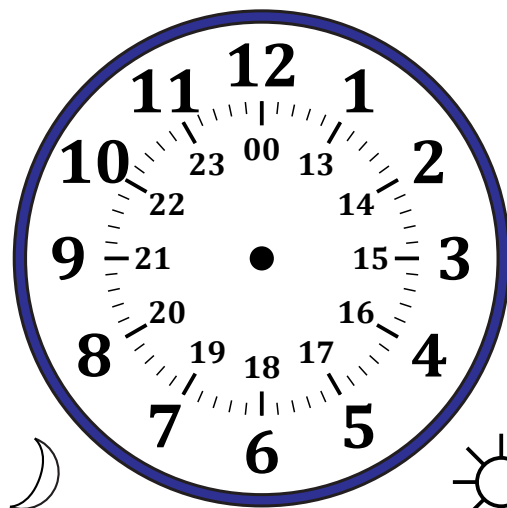
13:02

Noon

Midnight

Detailed description: A circular analog clock face with numbers 1-12 and minute markers. The time 13:02 is written below the clock. A sun icon is on the left and a moon icon is on the right.

4.



09:29

Midnight

Noon

Detailed description: A circular analog clock face with numbers 1-12 and minute markers. The time 09:29 is written below the clock. A moon icon is on the left and a sun icon is on the right.

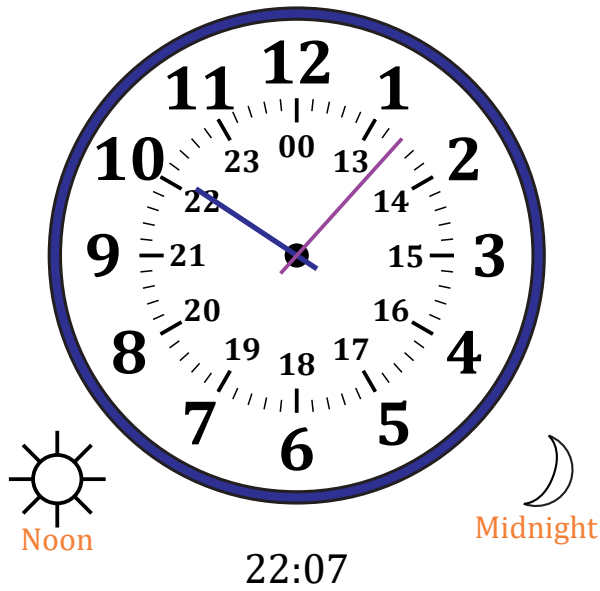
Sketching Time on Analog Clocks (B) Answers

Name: _____

Date: _____

Sketch each time on the clock face above it.

1.



2.



3.



4.

