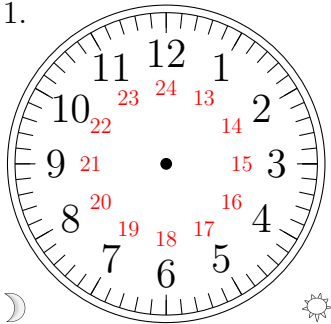


# Sketching Analog Clocks (A)

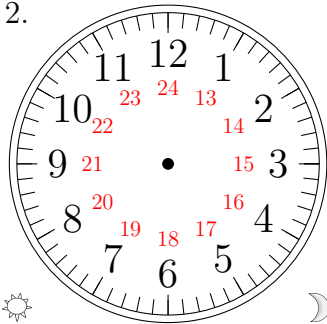
Sketch each time on the clock face above it.

1.



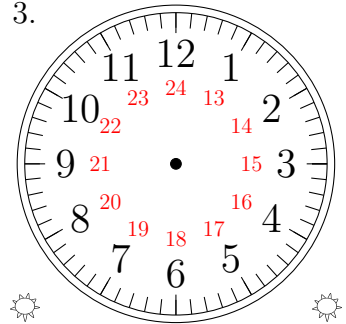
07:05

2.



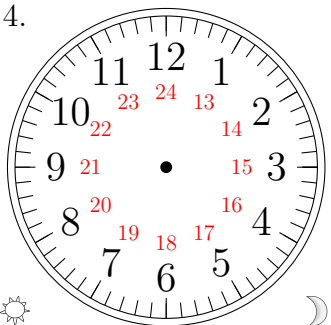
13:50

3.



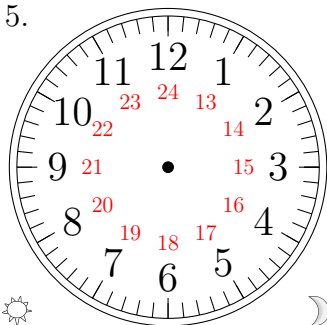
12:00

4.



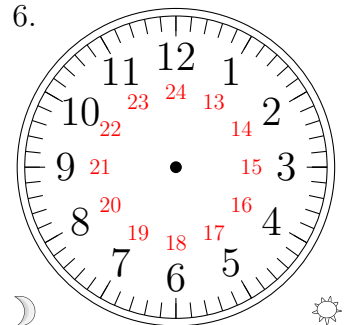
22:45

5.



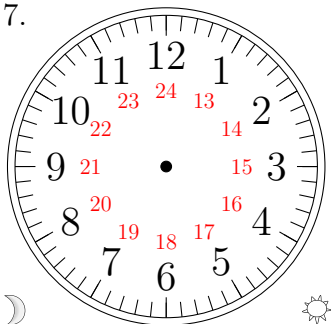
14:40

6.



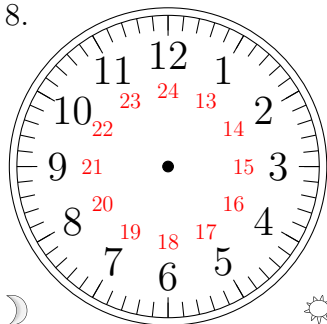
00:30

7.



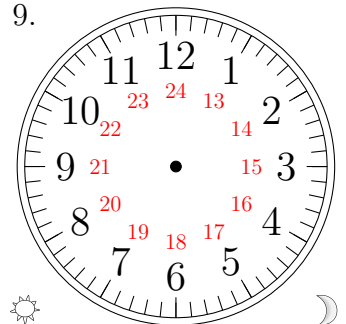
06:25

8.



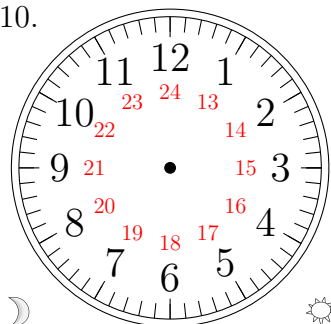
08:55

9.



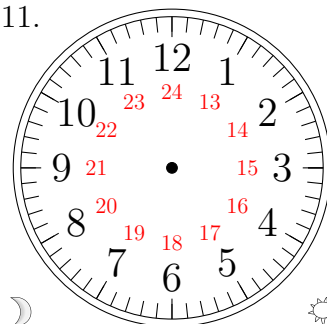
15:15

10.



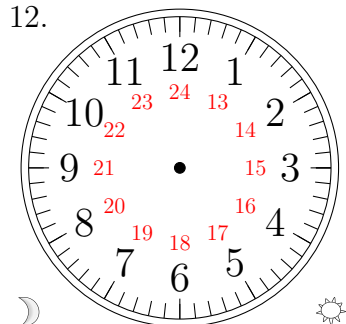
11:35

11.



05:20

12.

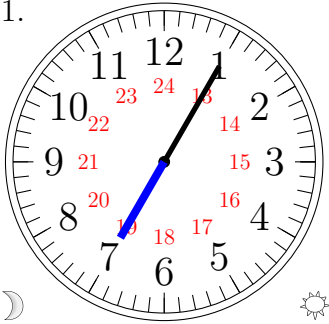


04:10

# Sketching Analog Clocks (A) Answers

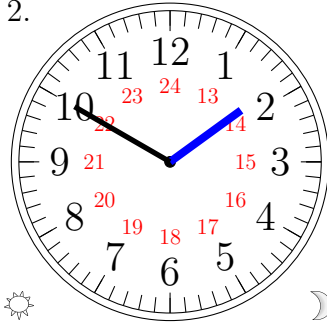
Sketch each time on the clock face above it.

1.



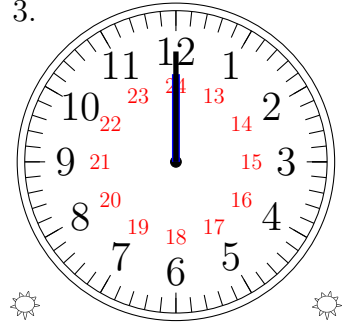
07:05

2.



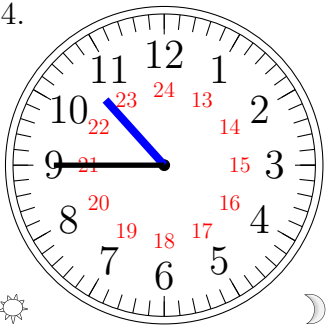
13:50

3.



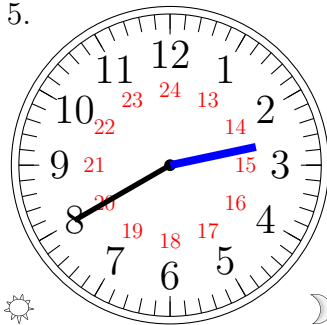
12:00

4.



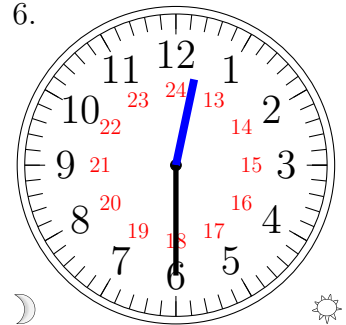
22:45

5.



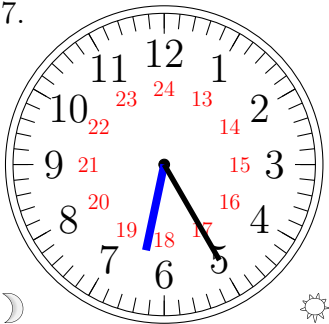
14:40

6.



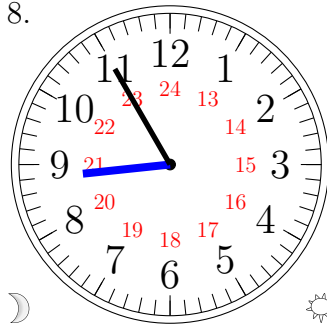
00:30

7.



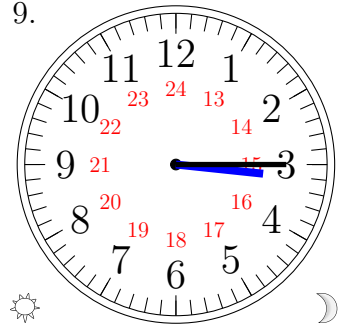
06:25

8.



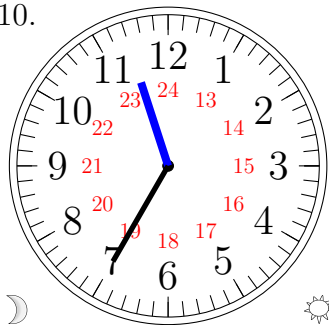
08:55

9.



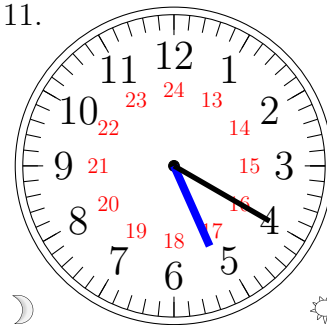
15:15

10.



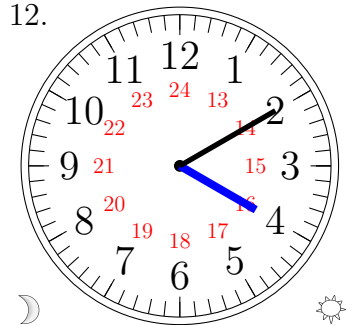
11:35

11.



05:20

12.



04:10