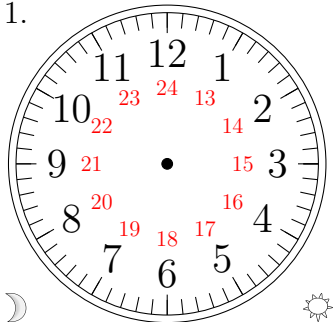


Sketching Analog Clocks (D)

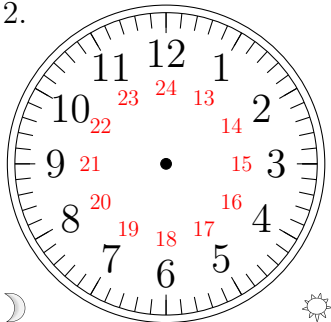
Sketch each time on the clock face above it.

1.



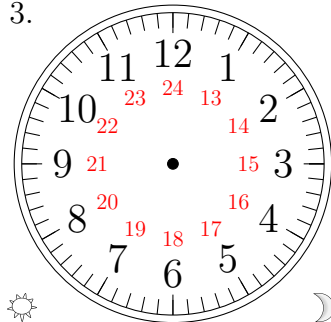
08:05

2.



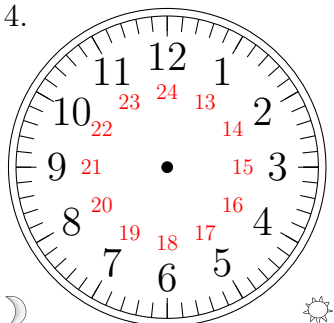
03:20

3.



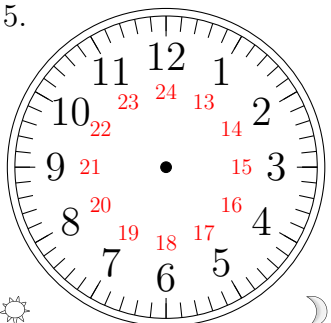
13:15

4.



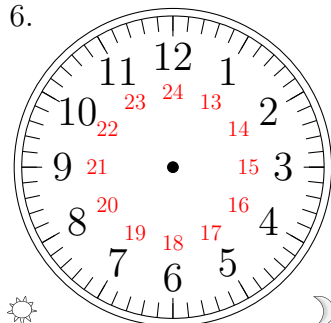
11:55

5.



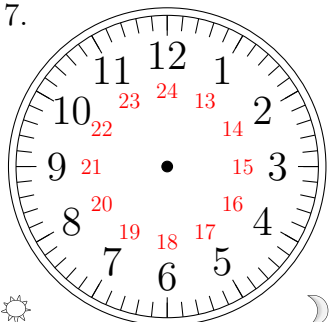
21:10

6.



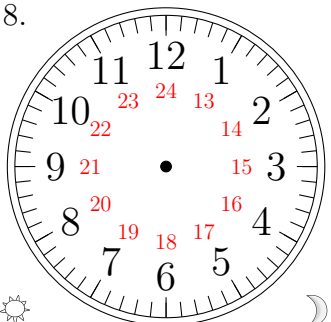
19:45

7.



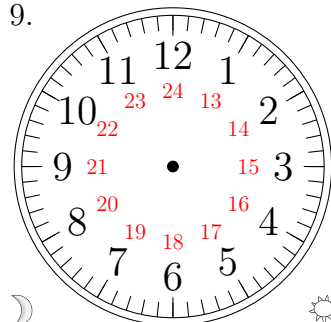
16:50

8.



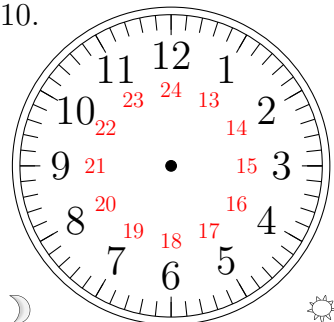
20:40

9.



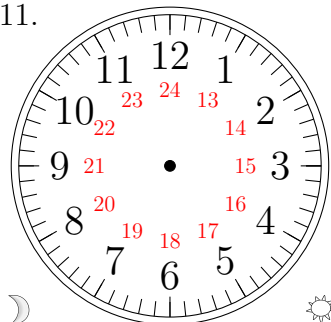
07:30

10.



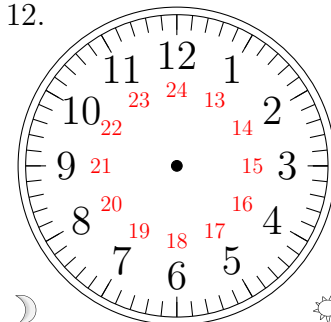
01:25

11.



10:00

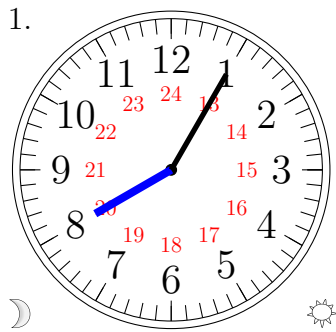
12.



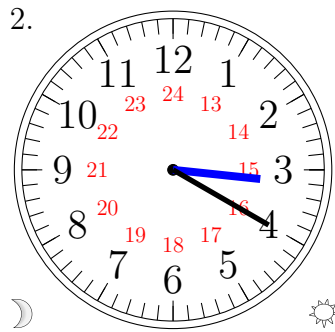
06:35

Sketching Analog Clocks (D) Answers

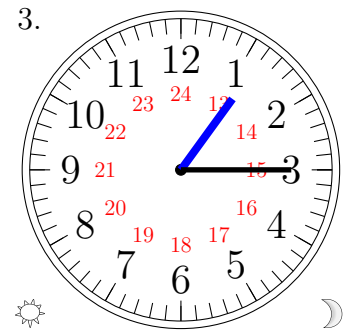
Sketch each time on the clock face above it.



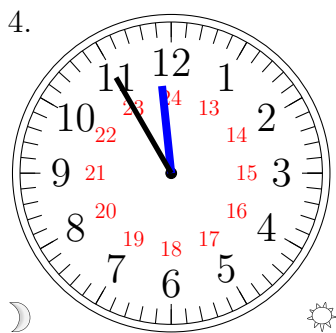
08:05



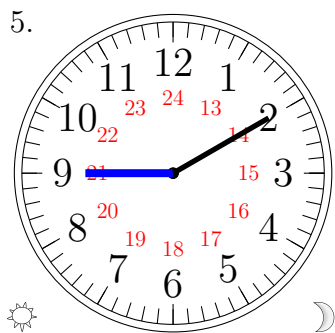
03:20



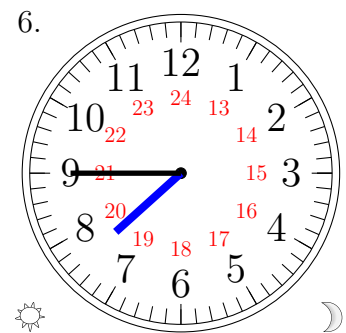
13:15



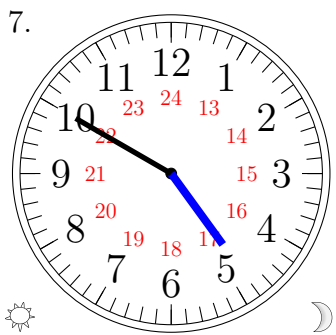
11:55



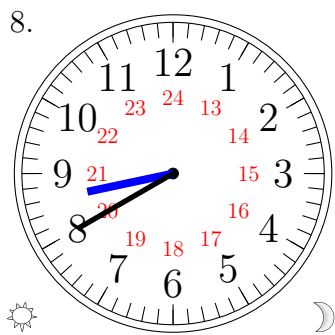
21:10



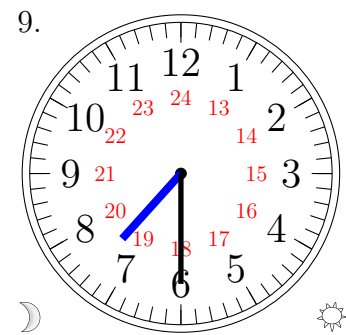
19:45



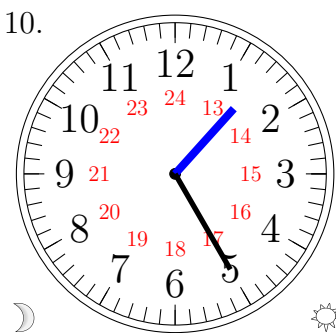
16:50



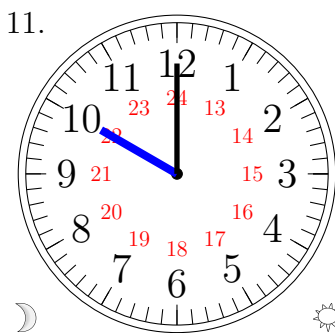
20:40



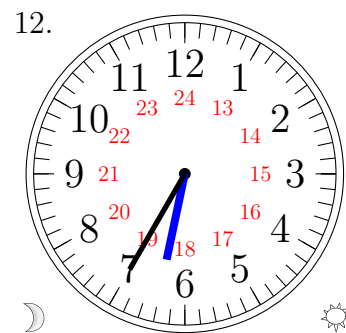
07:30



01:25



10:00



06:35