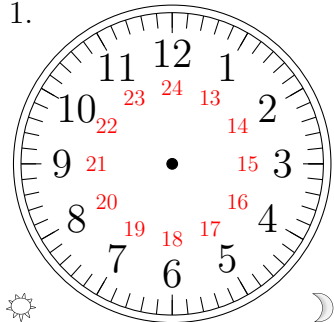


Sketching Analog Clocks (F)

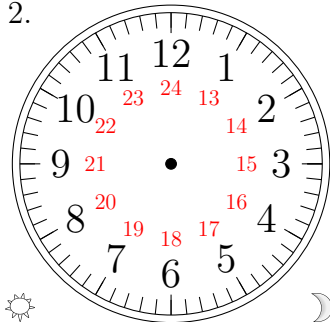
Sketch each time on the clock face above it.

1.



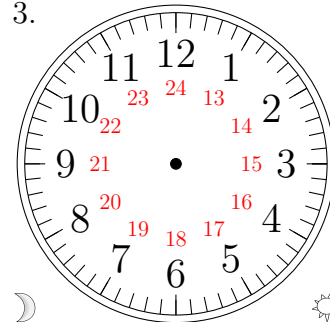
20:15

2.



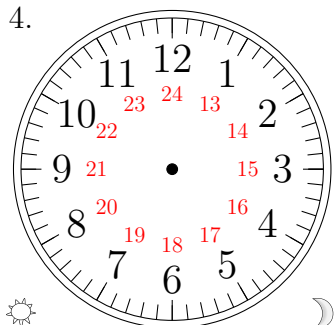
23:50

3.



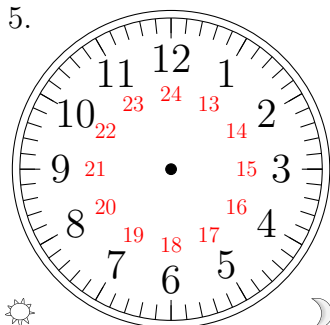
10:45

4.



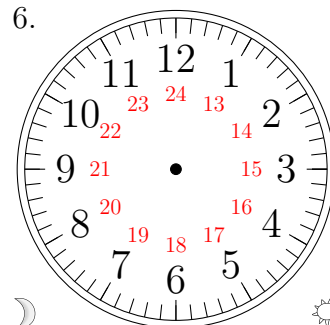
13:25

5.



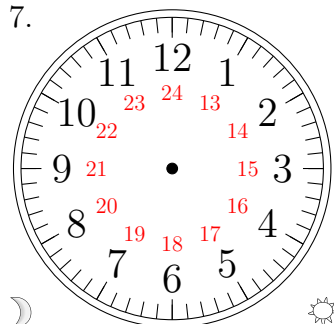
18:40

6.



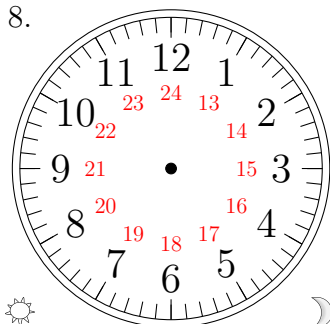
05:00

7.



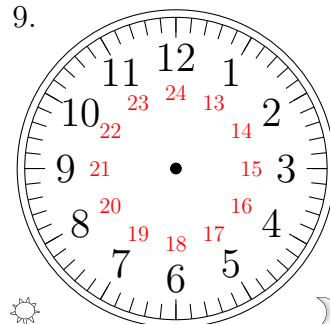
01:30

8.



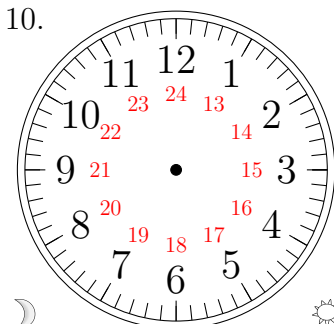
17:10

9.



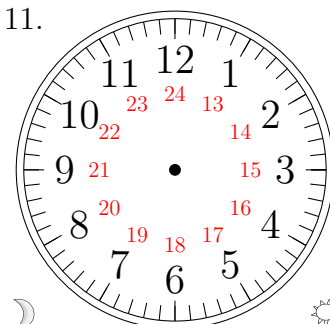
19:05

10.



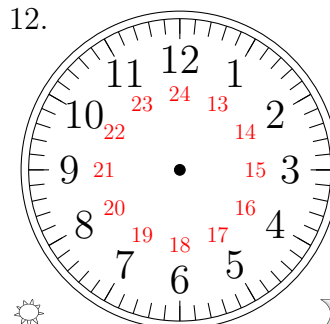
03:55

11.



06:35

12.

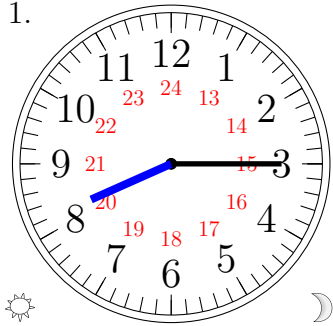


12:20

Sketching Analog Clocks (F) Answers

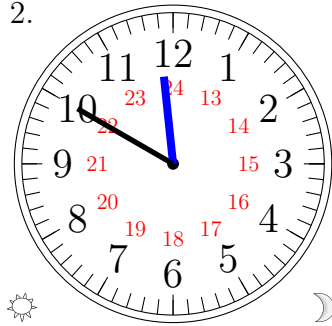
Sketch each time on the clock face above it.

1.



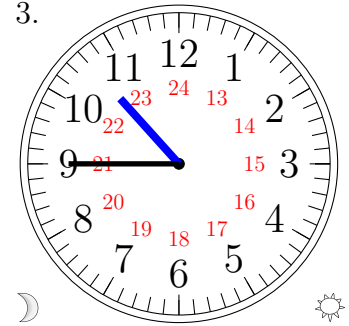
20:15

2.



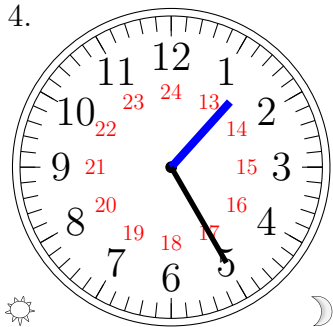
23:50

3.



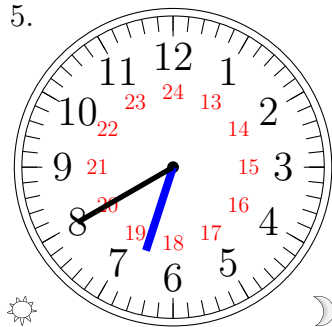
10:45

4.



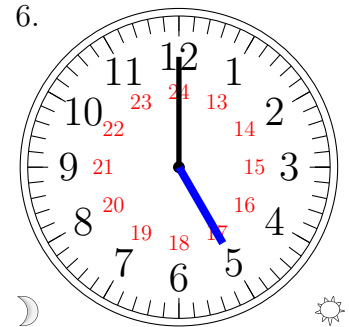
13:25

5.



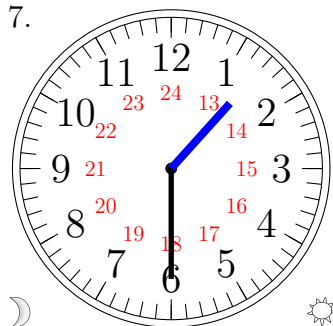
18:40

6.



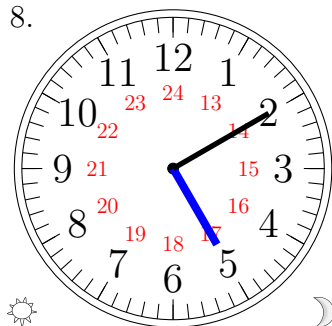
05:00

7.



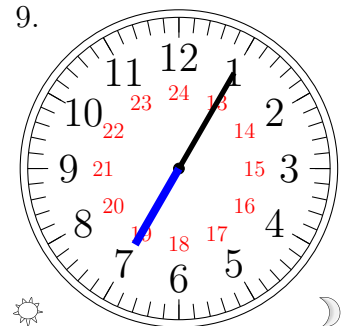
01:30

8.



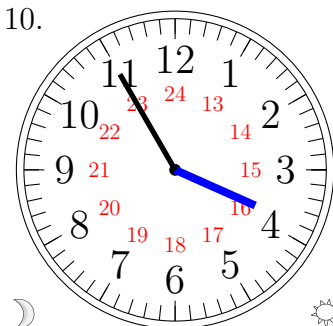
17:10

9.



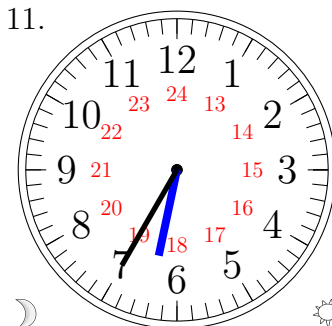
19:05

10.



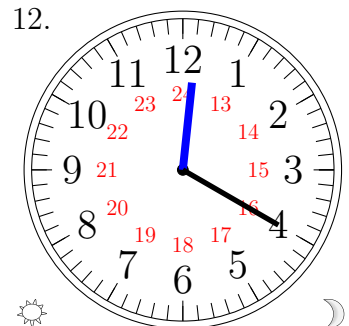
03:55

11.



06:35

12.



12:20