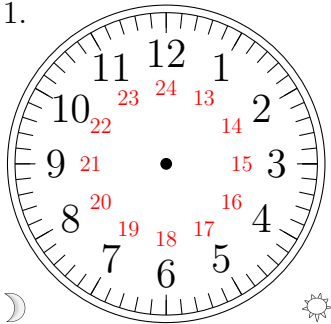


Sketching Analog Clocks (A)

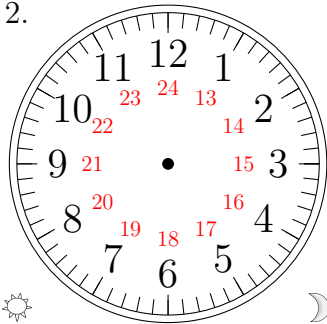
Sketch each time on the clock face above it.

1.



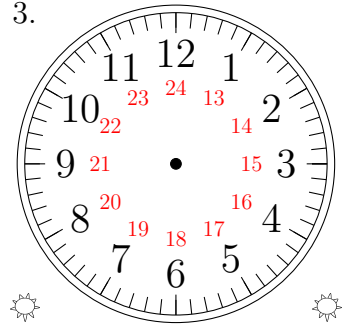
07:05

2.



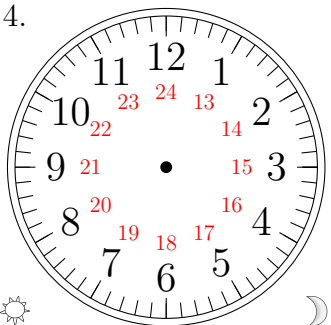
13:50

3.



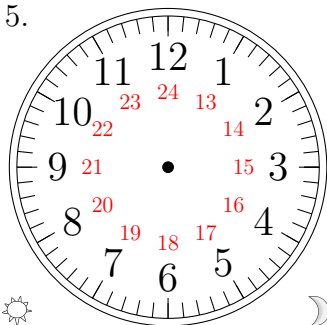
12:00

4.



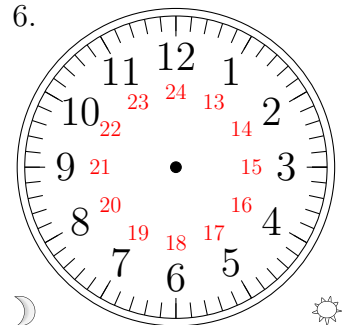
22:45

5.



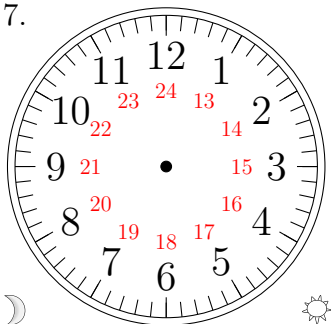
14:40

6.



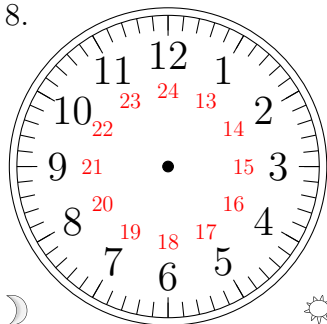
00:30

7.



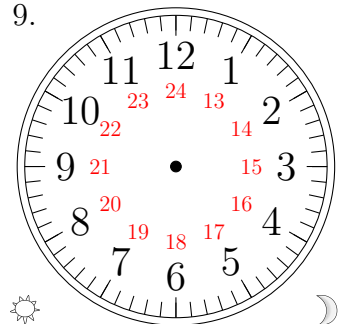
06:25

8.



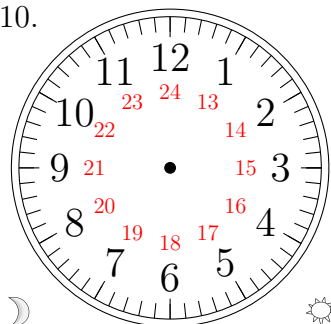
08:55

9.



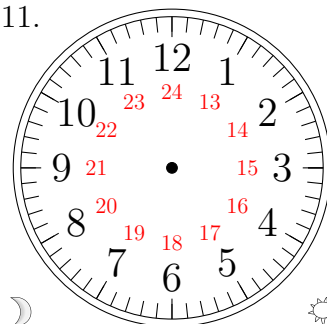
15:15

10.



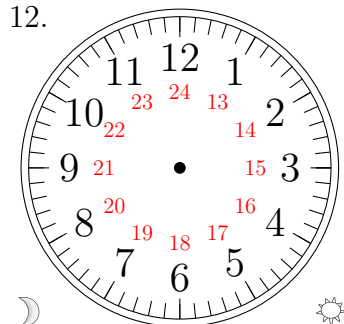
11:35

11.



05:20

12.

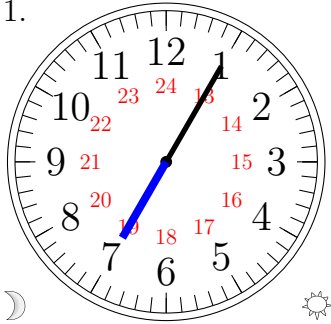


04:10

Sketching Analog Clocks (A) Answers

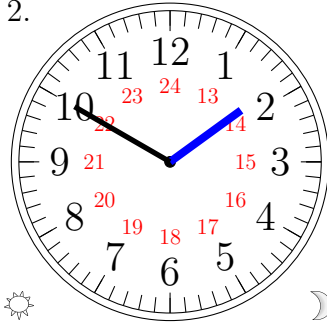
Sketch each time on the clock face above it.

1.



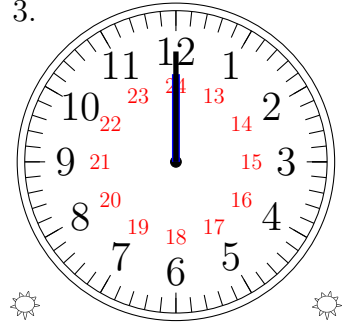
07:05

2.



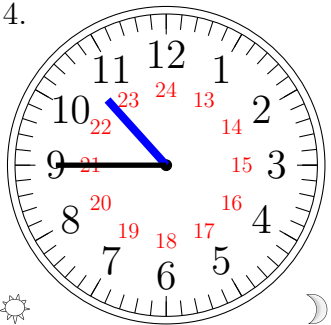
13:50

3.



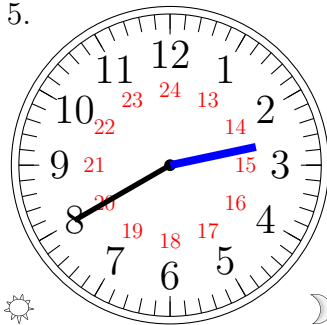
12:00

4.



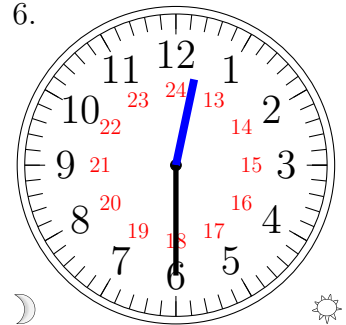
22:45

5.



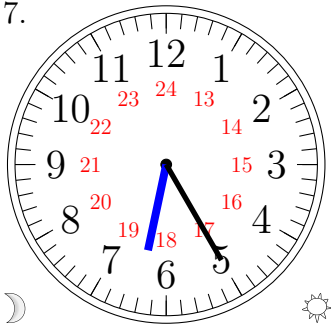
14:40

6.



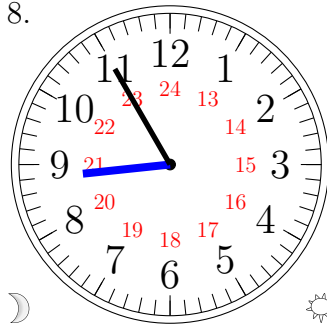
00:30

7.



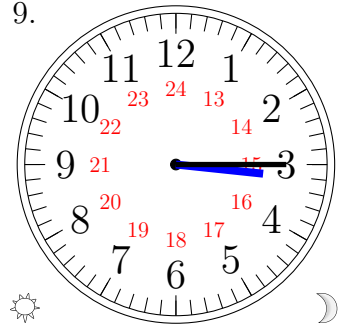
06:25

8.



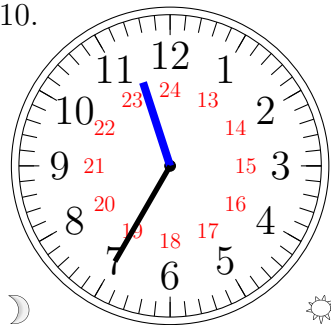
08:55

9.



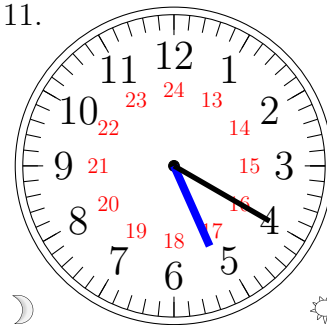
15:15

10.



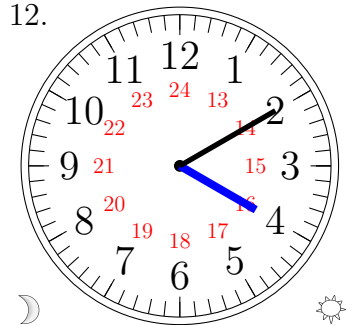
11:35

11.



05:20

12.

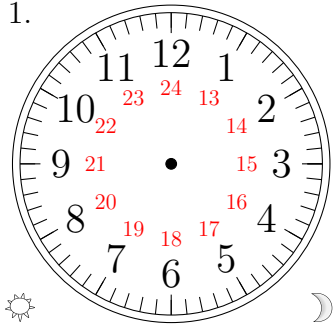


04:10

Sketching Analog Clocks (B)

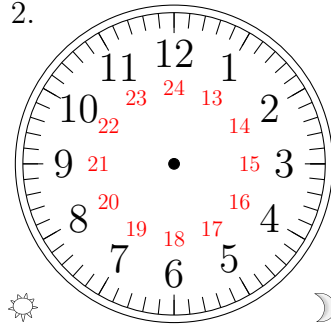
Sketch each time on the clock face above it.

1.



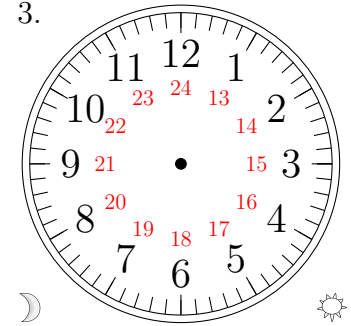
19:35

2.



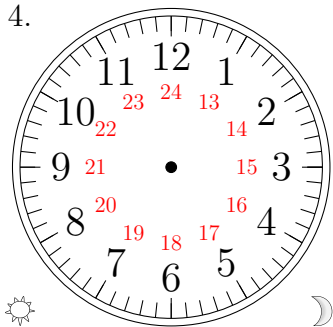
15:20

3.



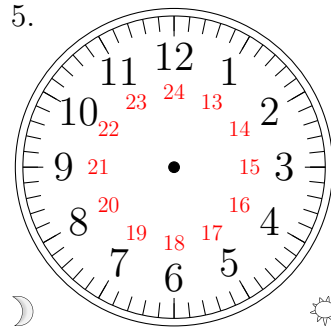
03:50

4.



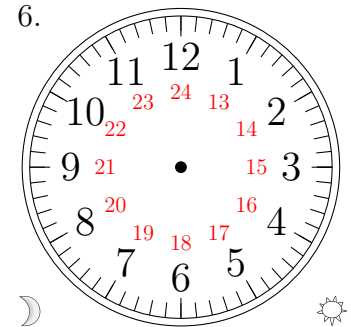
18:10

5.



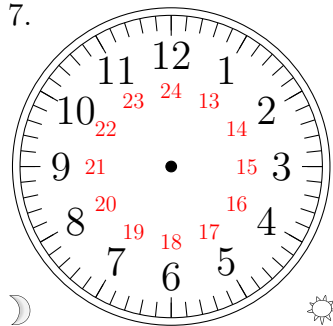
04:40

6.



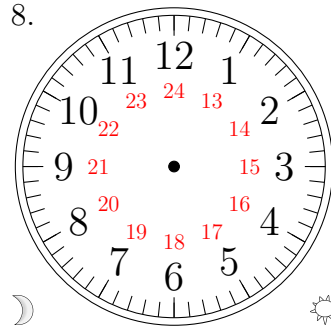
05:30

7.



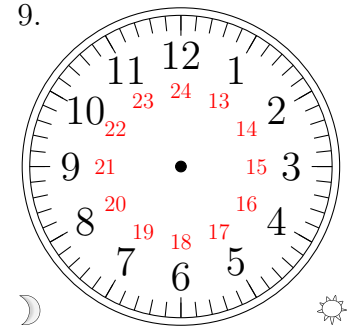
11:15

8.



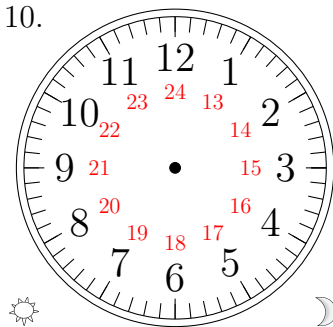
09:45

9.



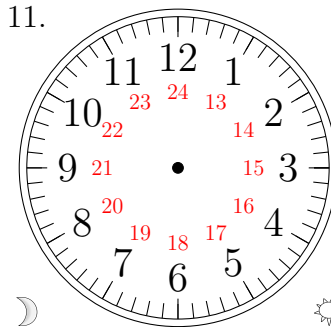
07:25

10.



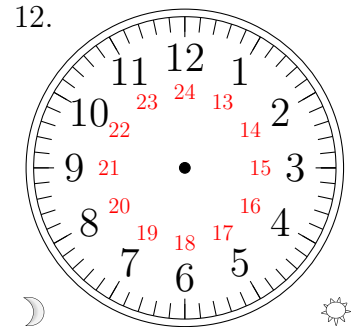
14:00

11.



00:05

12.

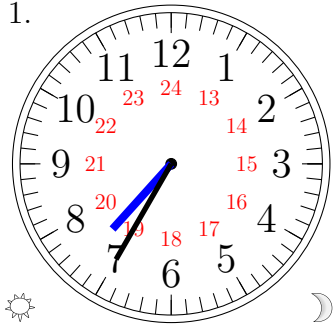


08:55

Sketching Analog Clocks (B) Answers

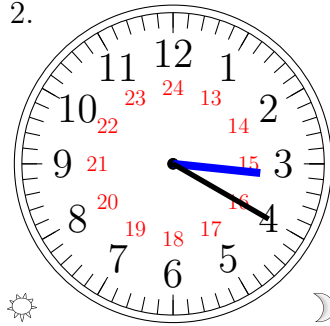
Sketch each time on the clock face above it.

1.



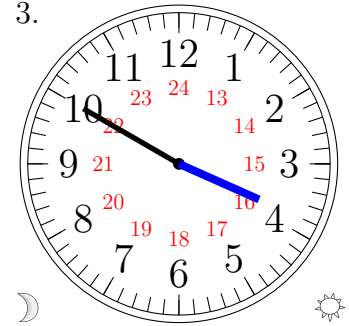
19:35

2.



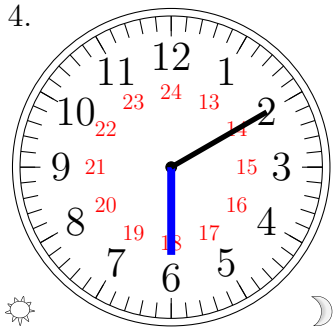
15:20

3.



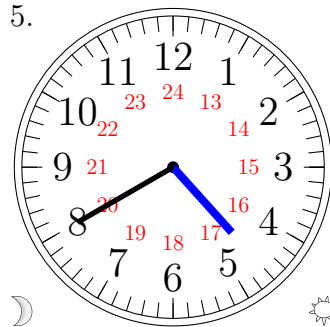
03:50

4.



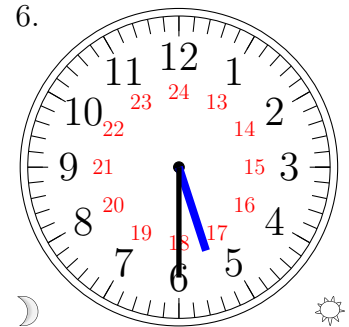
18:10

5.



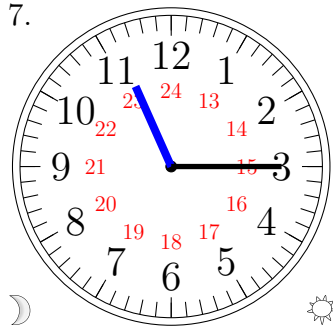
04:40

6.



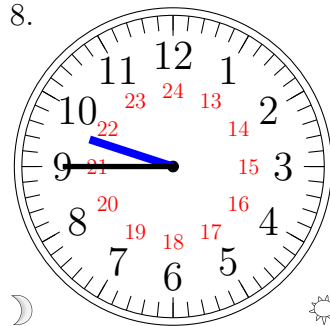
05:30

7.



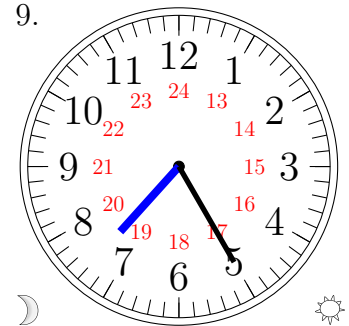
11:15

8.



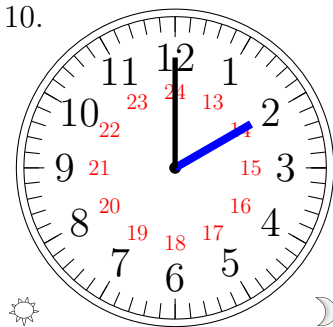
09:45

9.



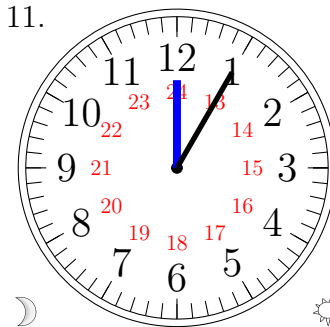
07:25

10.



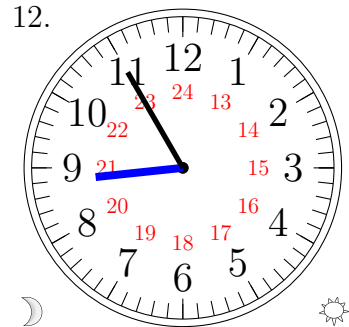
14:00

11.



00:05

12.

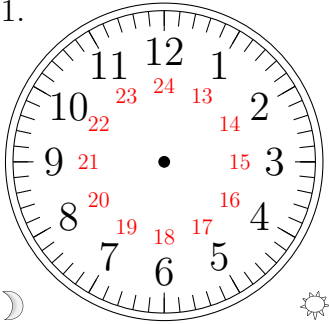


08:55

Sketching Analog Clocks (C)

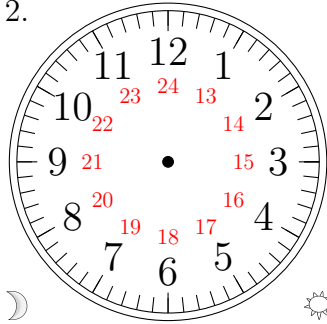
Sketch each time on the clock face above it.

1.



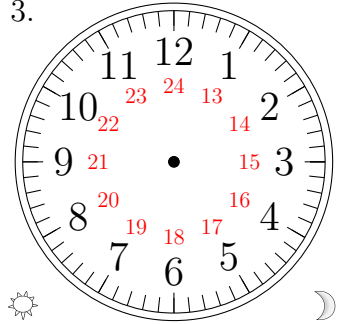
11:15

2.



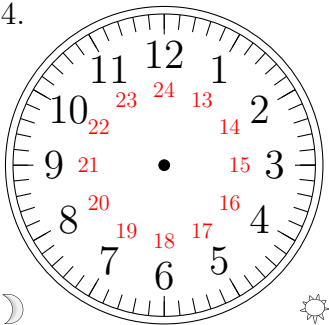
04:45

3.



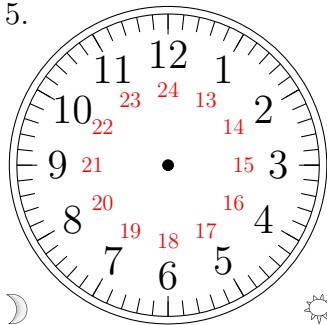
19:30

4.



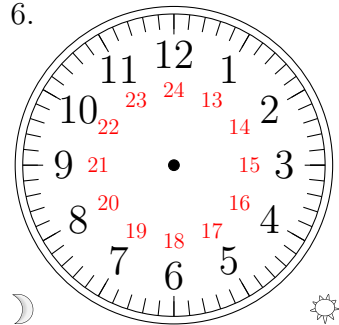
03:25

5.



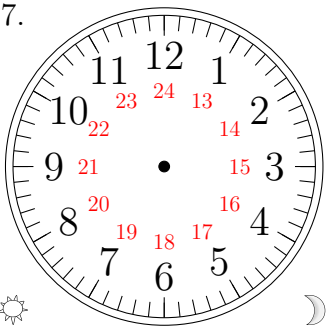
10:20

6.



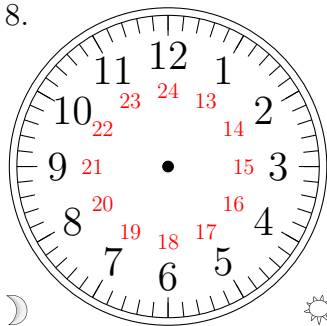
05:40

7.



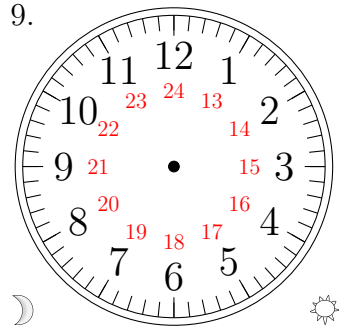
21:10

8.



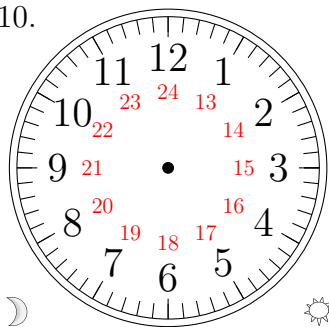
09:00

9.



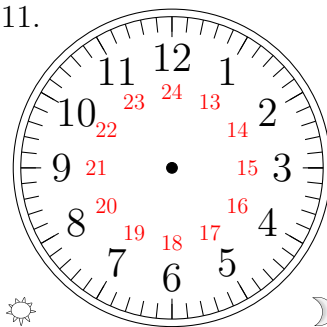
07:05

10.



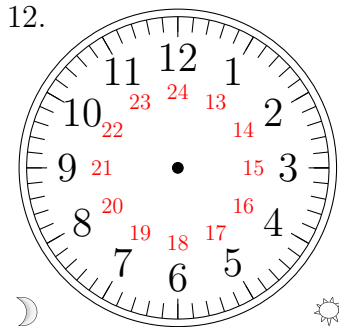
00:35

11.



17:50

12.

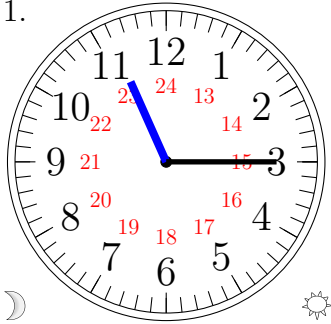


01:55

Sketching Analog Clocks (C) Answers

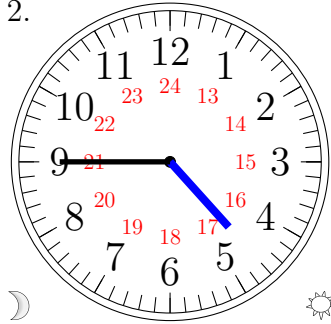
Sketch each time on the clock face above it.

1.



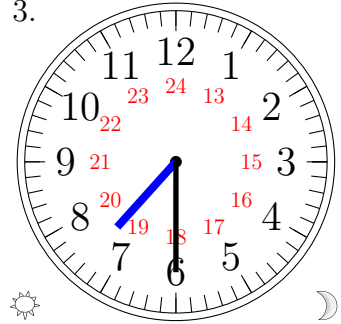
11:15

2.



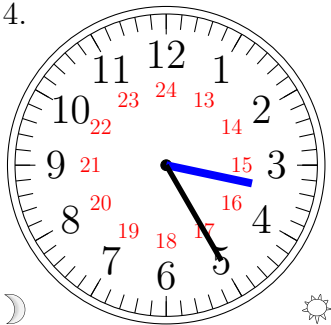
04:45

3.



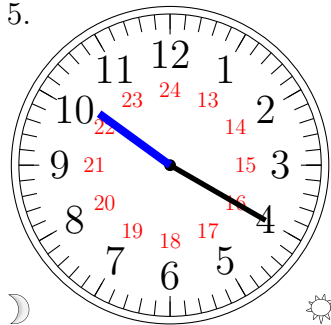
19:30

4.



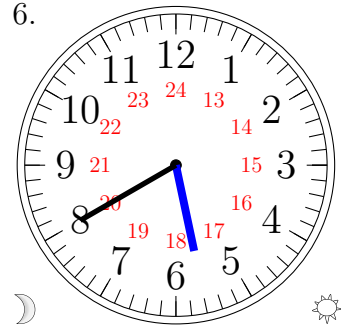
03:25

5.



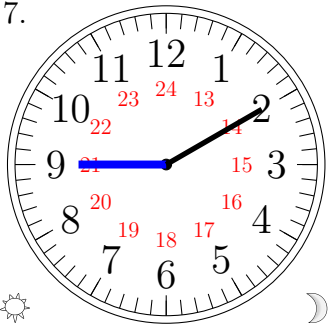
10:20

6.



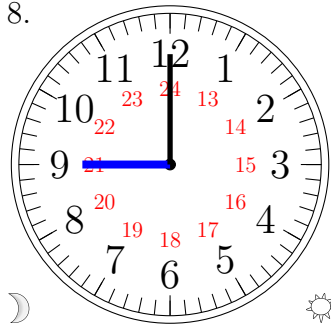
05:40

7.



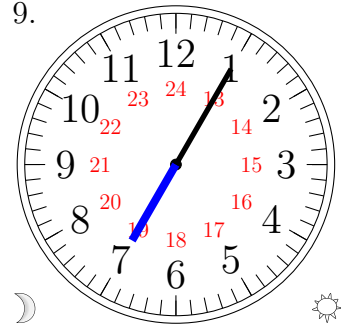
21:10

8.



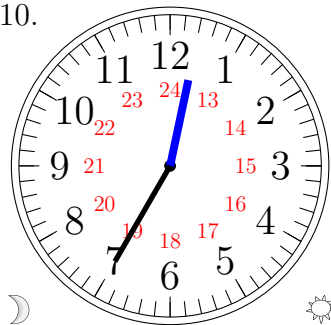
09:00

9.



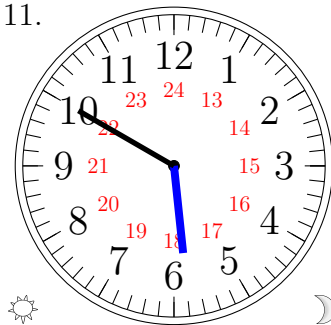
07:05

10.



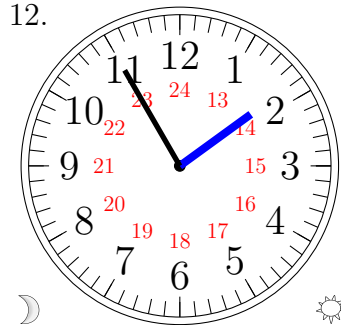
00:35

11.



17:50

12.

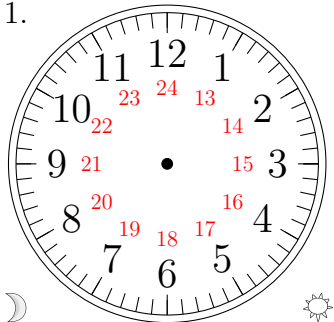


01:55

Sketching Analog Clocks (D)

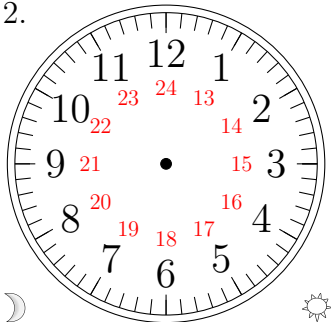
Sketch each time on the clock face above it.

1.



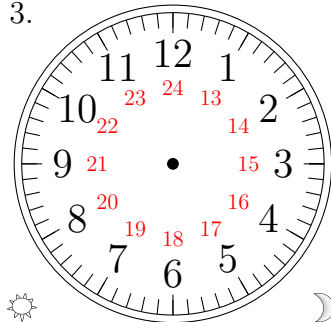
08:05

2.



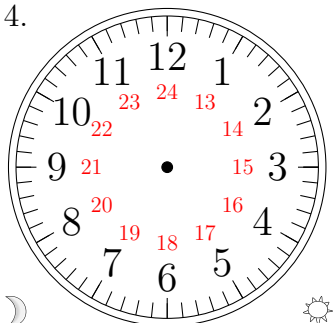
03:20

3.



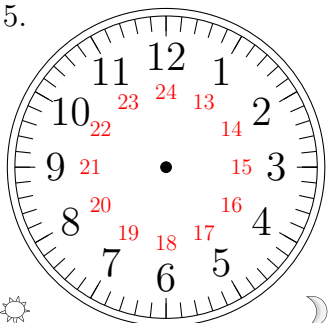
13:15

4.



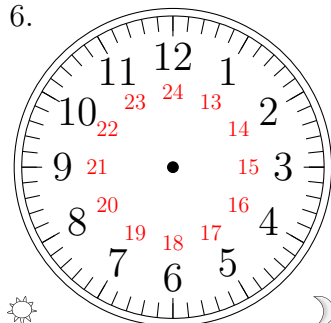
11:55

5.



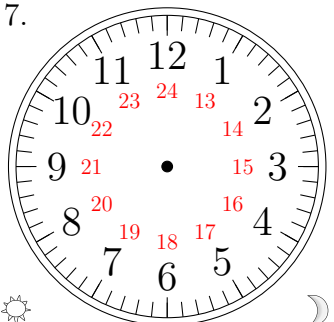
21:10

6.



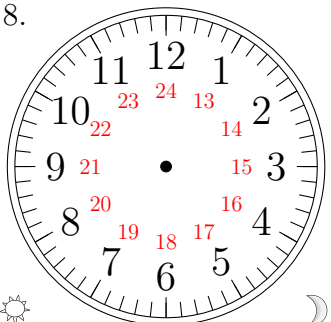
19:45

7.



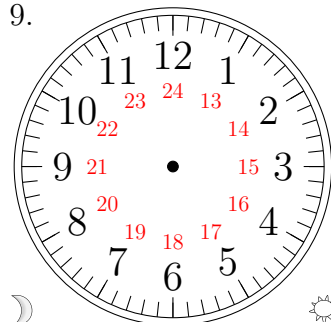
16:50

8.



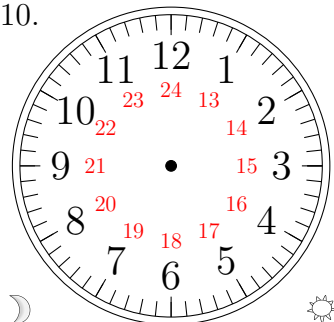
20:40

9.



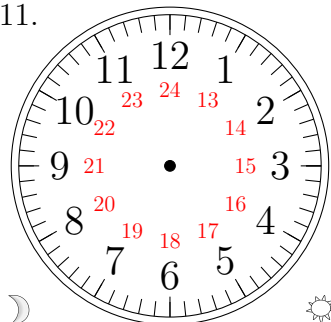
07:30

10.



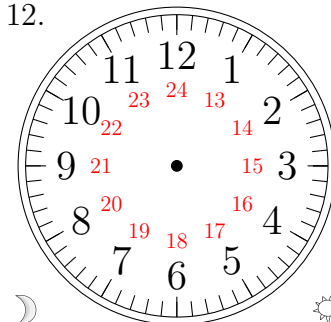
01:25

11.



10:00

12.

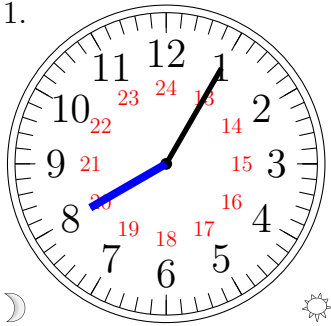


06:35

Sketching Analog Clocks (D) Answers

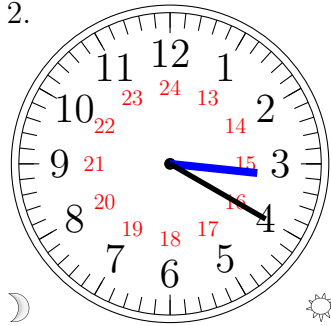
Sketch each time on the clock face above it.

1.



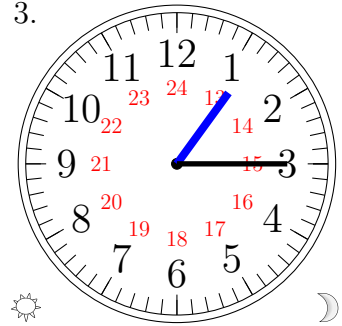
08:05

2.



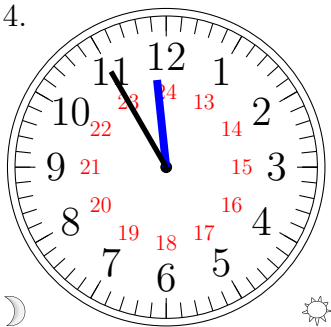
03:20

3.



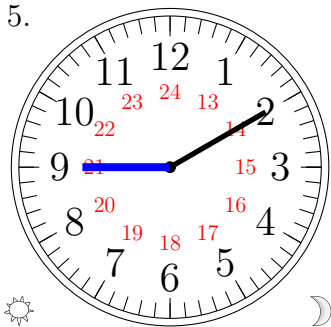
13:15

4.



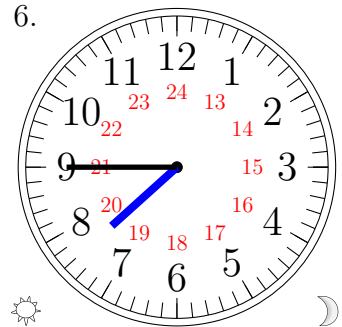
11:55

5.



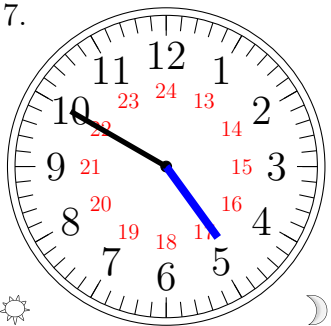
21:10

6.



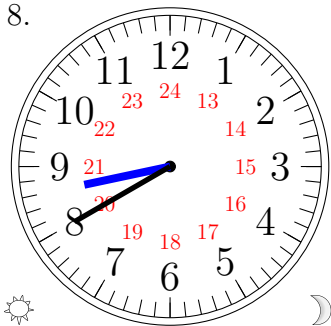
19:45

7.



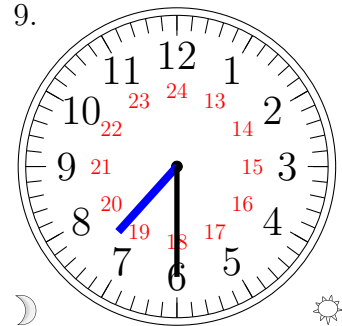
16:50

8.



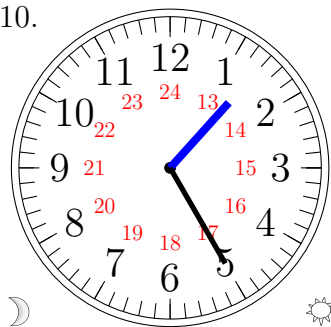
20:40

9.



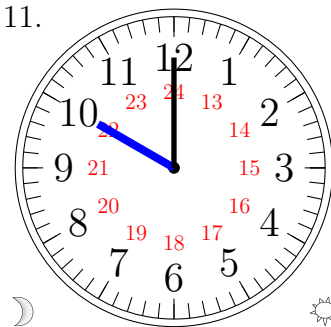
07:30

10.



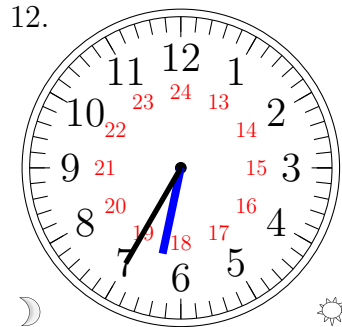
01:25

11.



10:00

12.

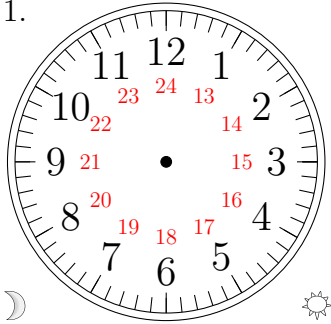


06:35

Sketching Analog Clocks (E)

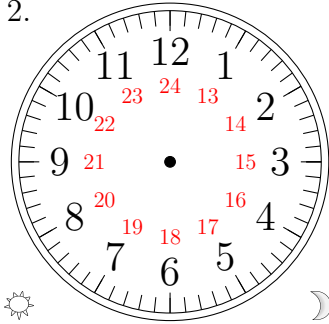
Sketch each time on the clock face above it.

1.



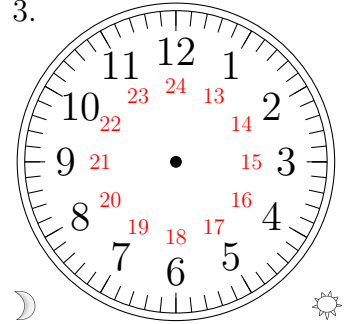
11:15

2.



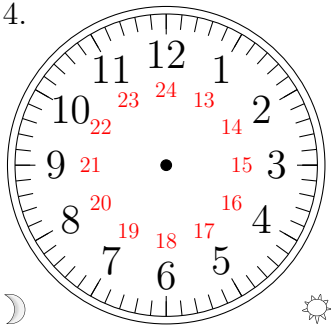
21:40

3.



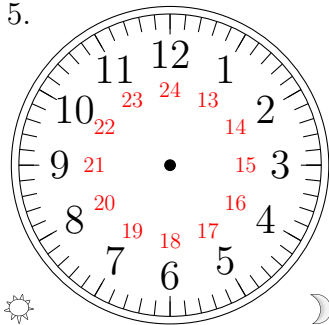
01:20

4.



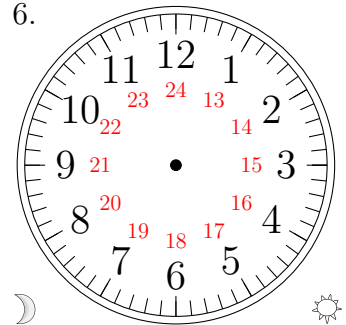
04:55

5.



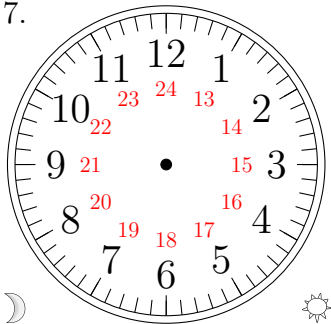
17:00

6.



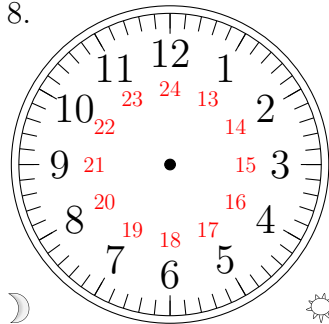
00:35

7.



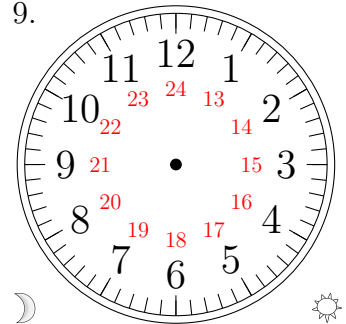
02:25

8.



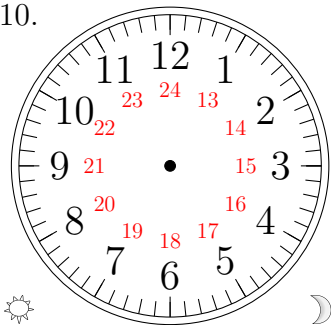
10:45

9.



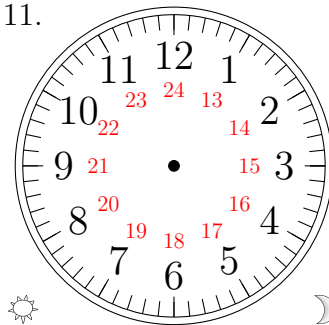
05:10

10.



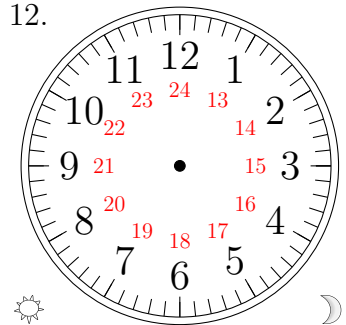
12:30

11.



16:50

12.

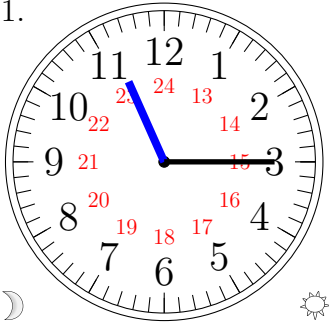


19:05

Sketching Analog Clocks (E) Answers

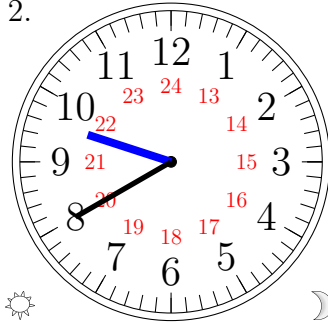
Sketch each time on the clock face above it.

1.



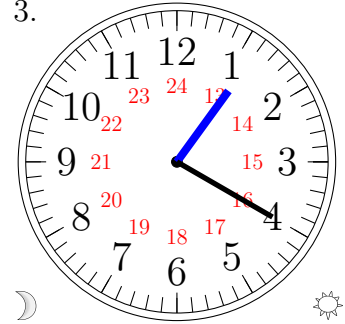
11:15

2.



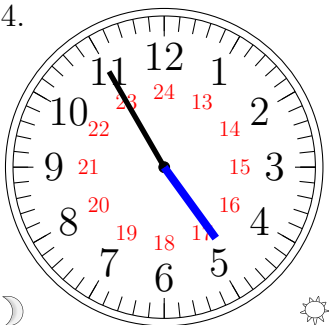
21:40

3.



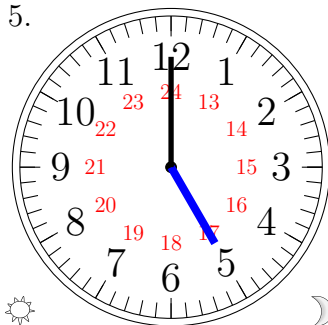
01:20

4.



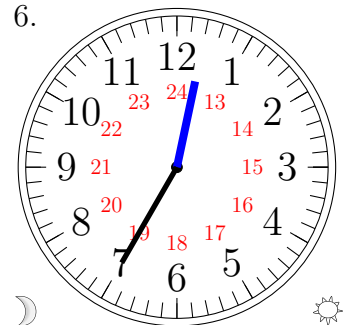
04:55

5.



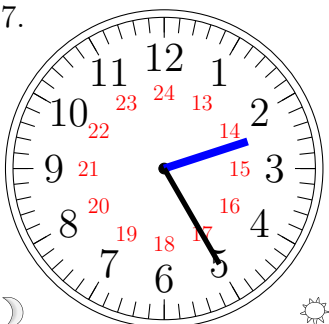
17:00

6.



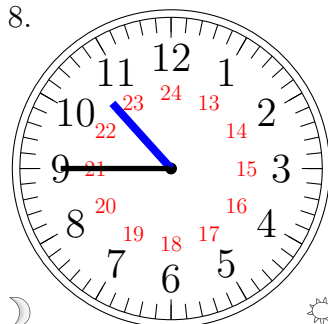
00:35

7.



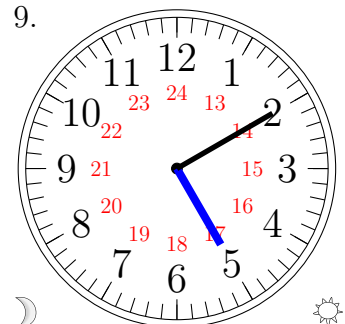
02:25

8.



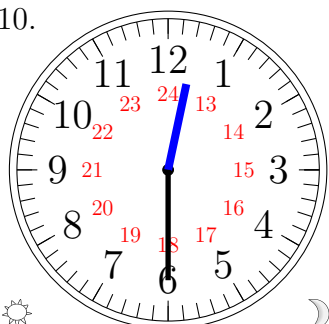
10:45

9.



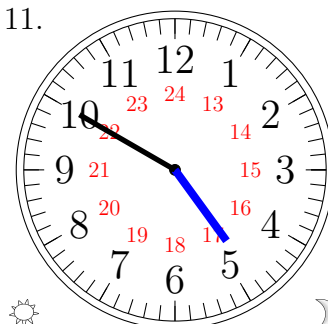
05:10

10.



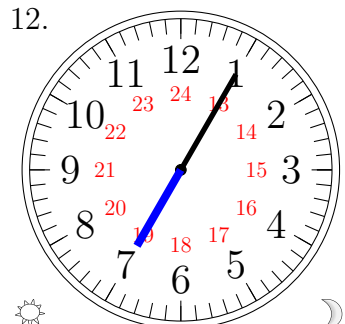
12:30

11.



16:50

12.

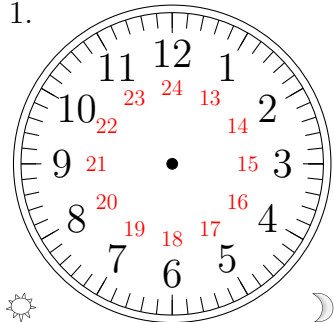


19:05

Sketching Analog Clocks (F)

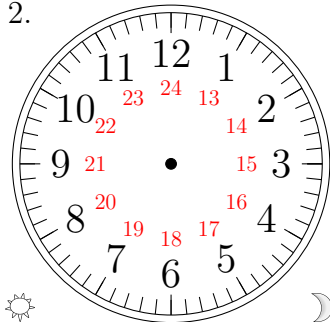
Sketch each time on the clock face above it.

1.



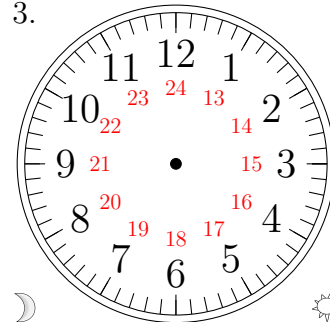
20:15

2.



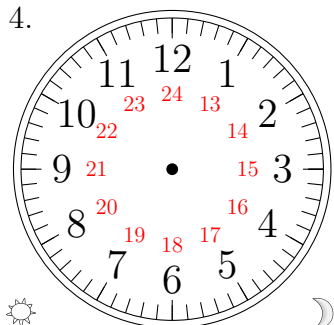
23:50

3.



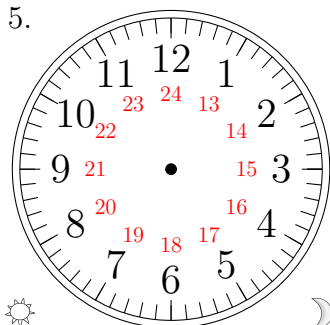
10:45

4.



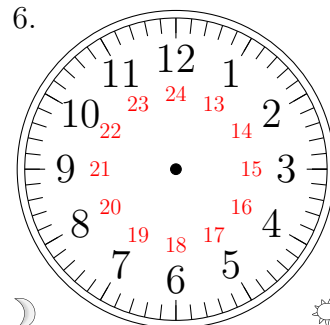
13:25

5.



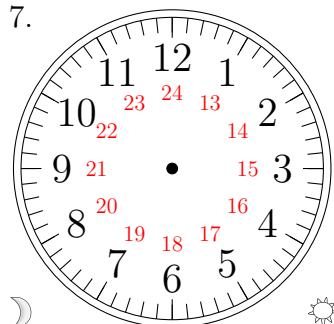
18:40

6.



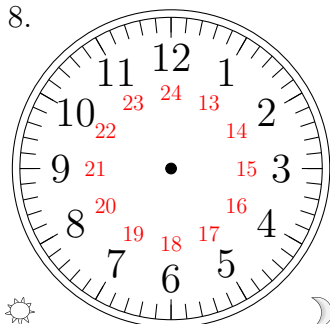
05:00

7.



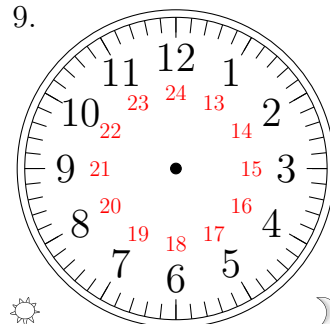
01:30

8.



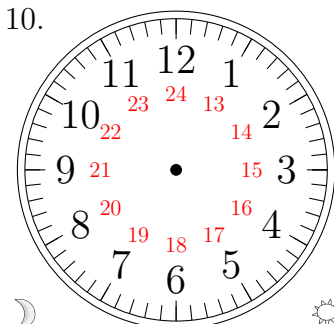
17:10

9.



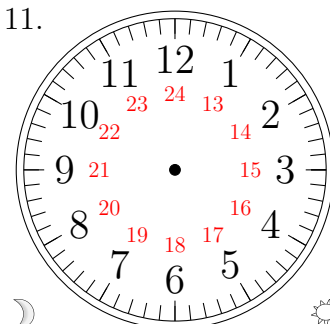
19:05

10.



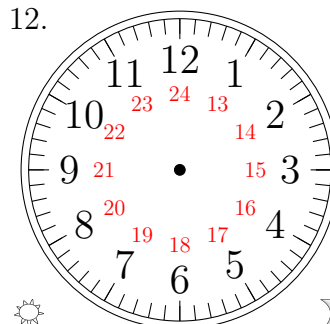
03:55

11.



06:35

12.

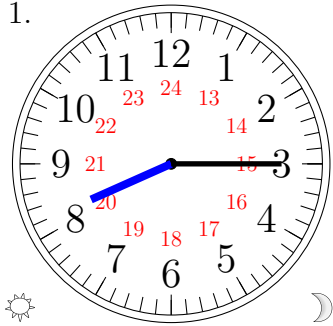


12:20

Sketching Analog Clocks (F) Answers

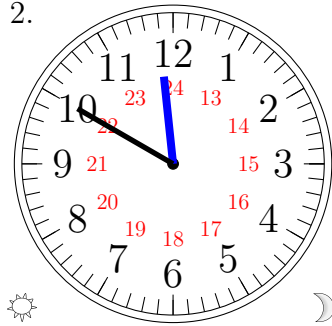
Sketch each time on the clock face above it.

1.



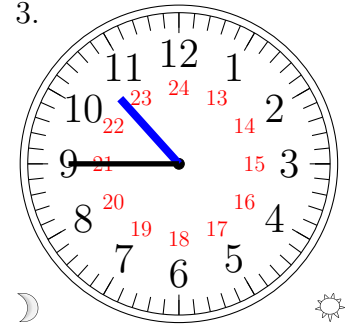
20:15

2.



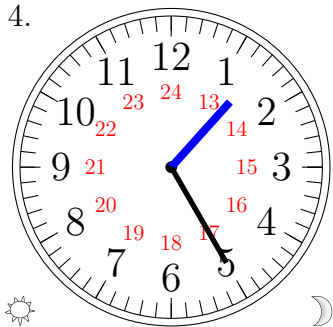
23:50

3.



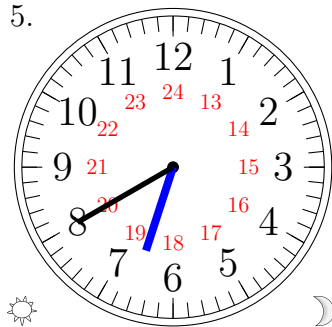
10:45

4.



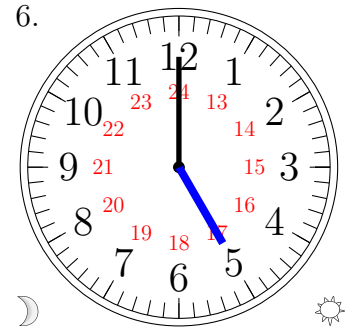
13:25

5.



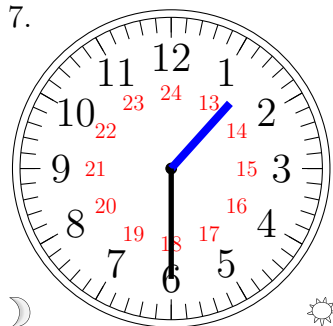
18:40

6.



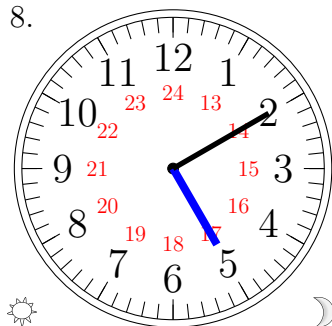
05:00

7.



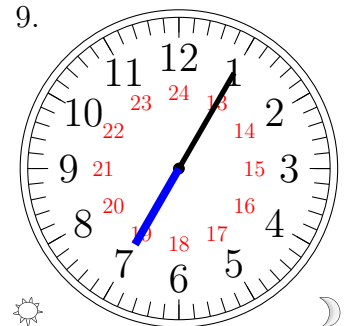
01:30

8.



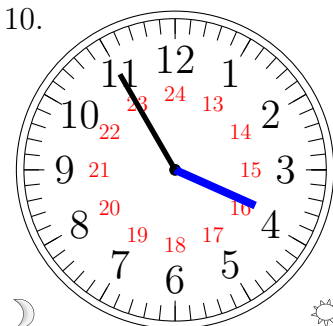
17:10

9.



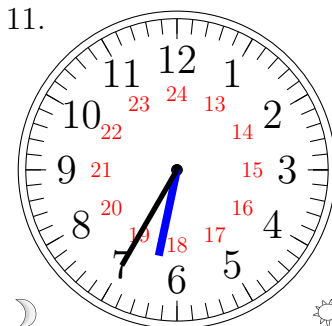
19:05

10.



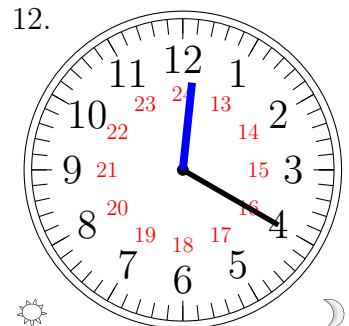
03:55

11.



06:35

12.

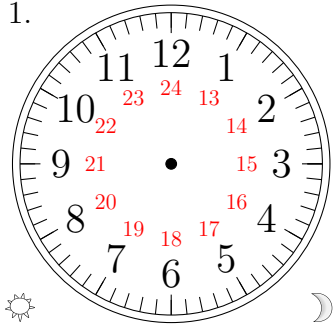


12:20

Sketching Analog Clocks (G)

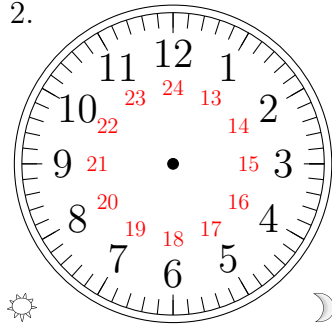
Sketch each time on the clock face above it.

1.



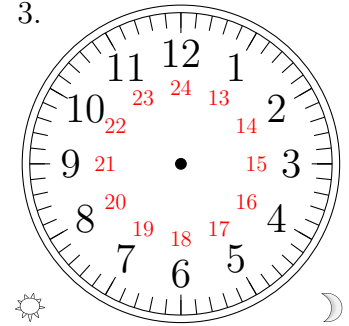
21:40

2.



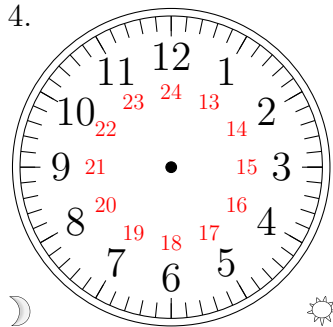
20:25

3.



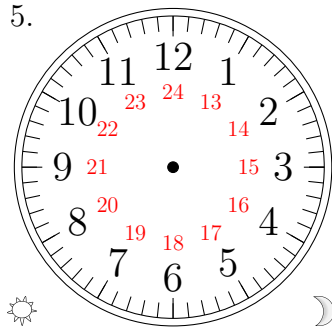
15:50

4.



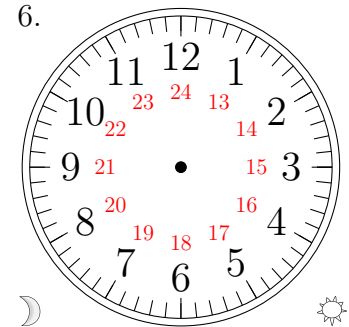
08:30

5.



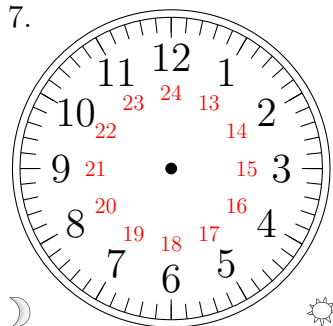
19:00

6.



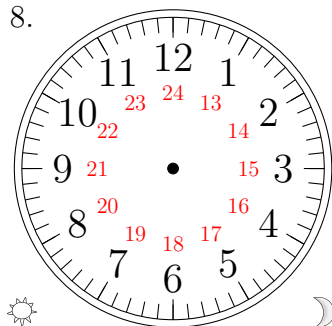
09:55

7.



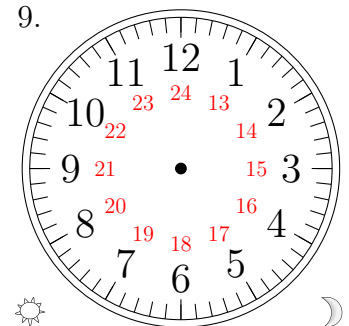
02:15

8.



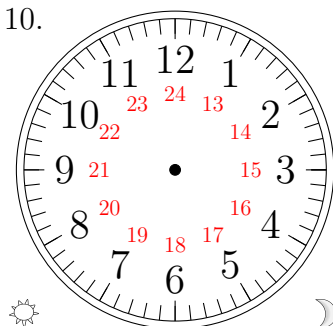
16:45

9.



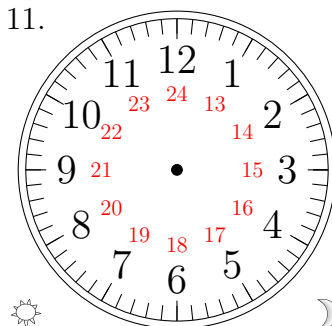
17:20

10.



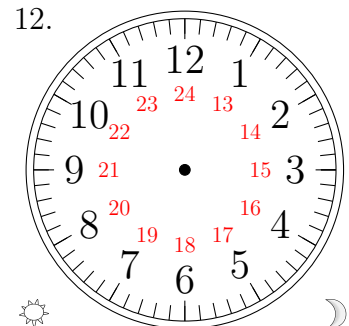
12:10

11.



22:05

12.

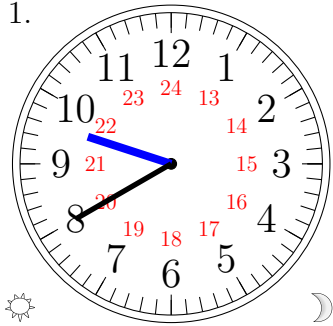


14:35

Sketching Analog Clocks (G) Answers

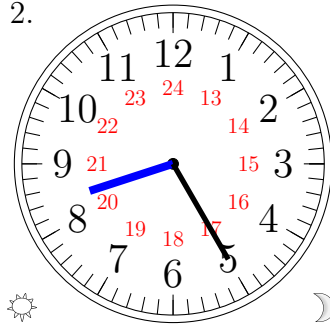
Sketch each time on the clock face above it.

1.



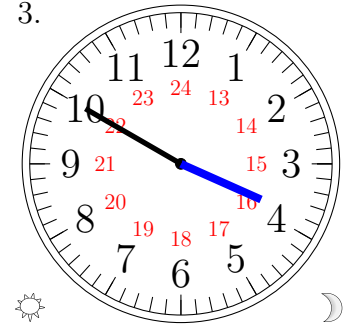
21:40

2.



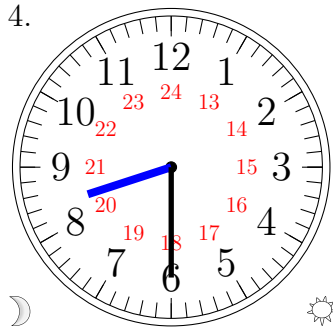
20:25

3.



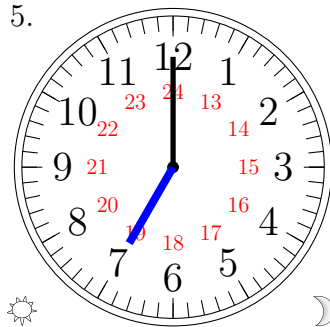
15:50

4.



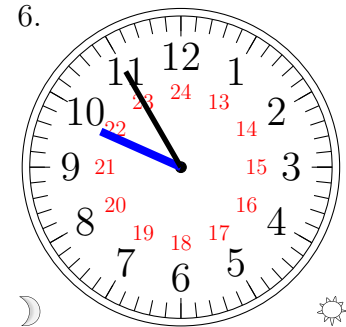
08:30

5.



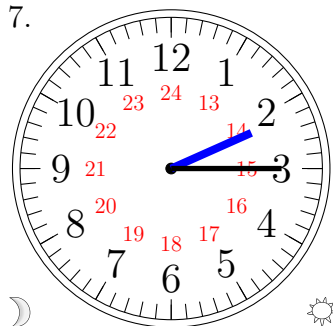
19:00

6.



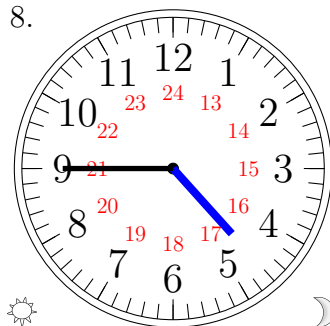
09:55

7.



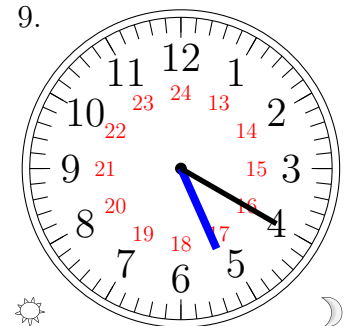
02:15

8.



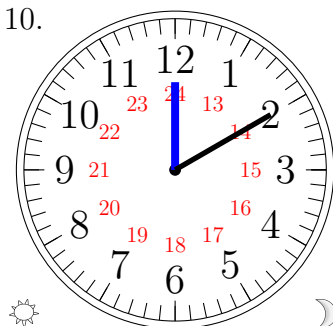
16:45

9.



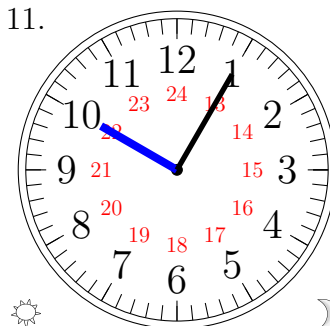
17:20

10.



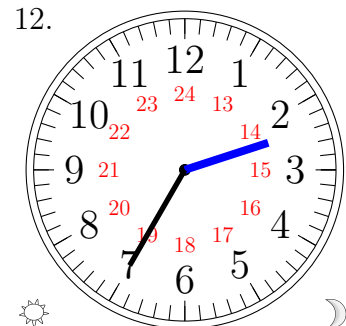
12:10

11.



22:05

12.

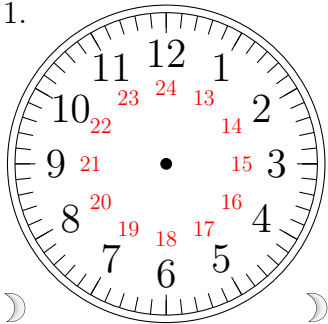


14:35

Sketching Analog Clocks (H)

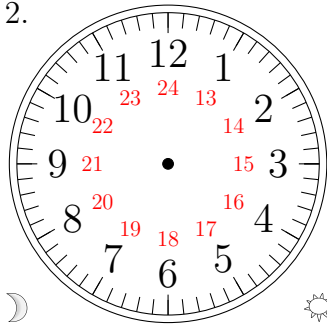
Sketch each time on the clock face above it.

1.



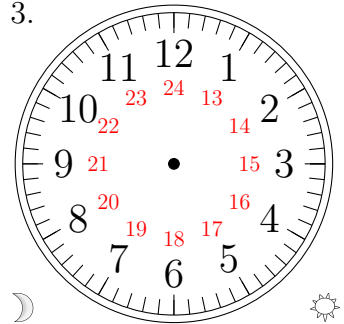
00:00

2.



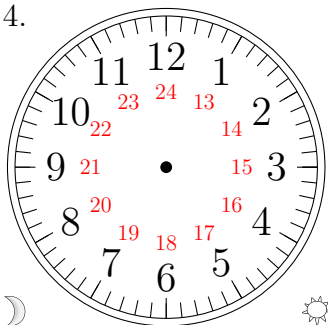
03:15

3.



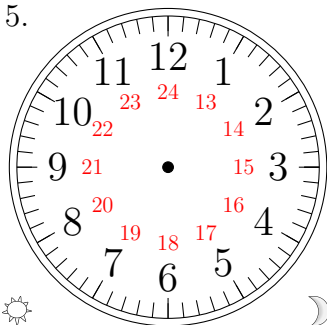
04:45

4.



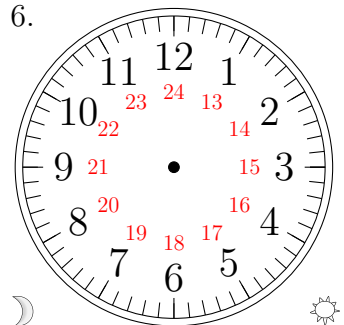
05:20

5.



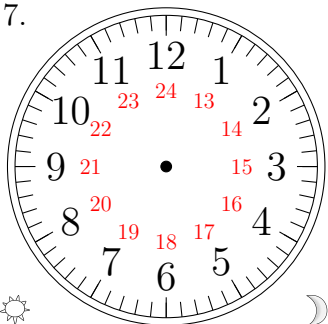
18:05

6.



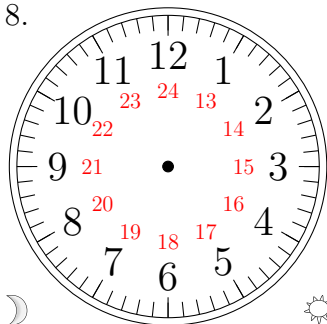
10:40

7.



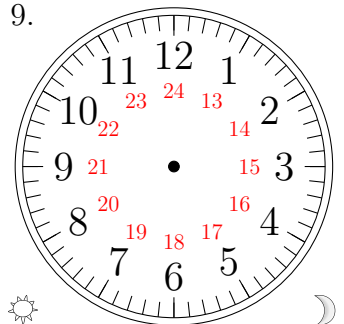
16:10

8.



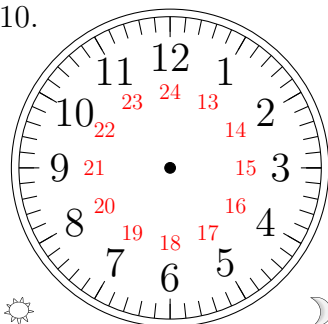
02:50

9.



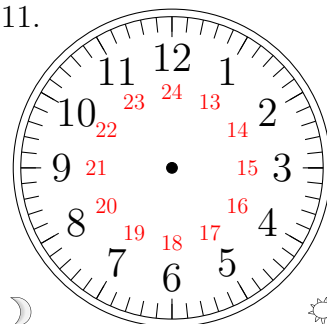
12:55

10.



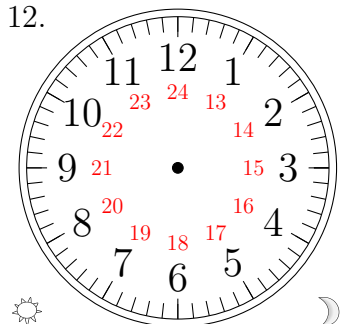
22:25

11.



07:30

12.

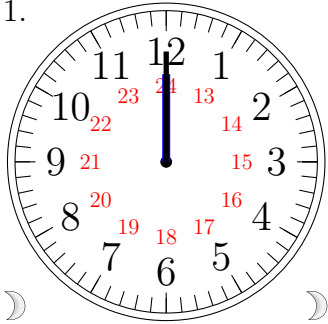


13:35

Sketching Analog Clocks (H) Answers

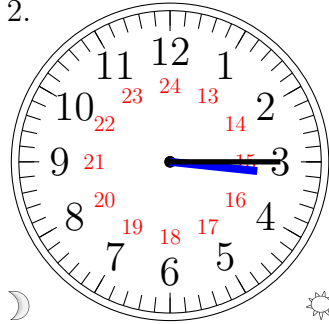
Sketch each time on the clock face above it.

1.



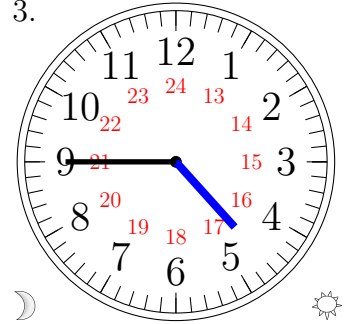
00:00

2.



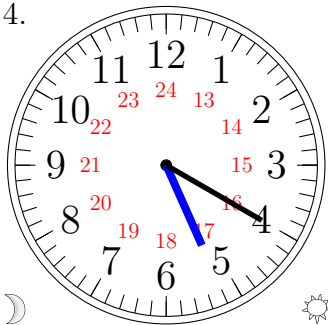
03:15

3.



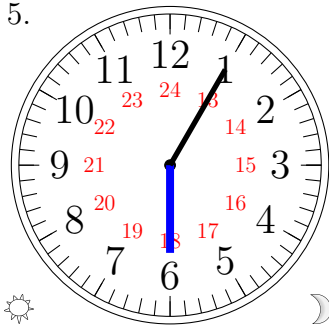
04:45

4.



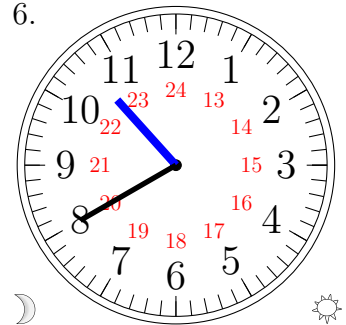
05:20

5.



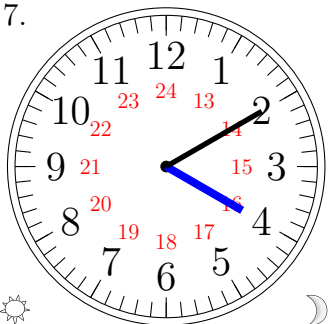
18:05

6.



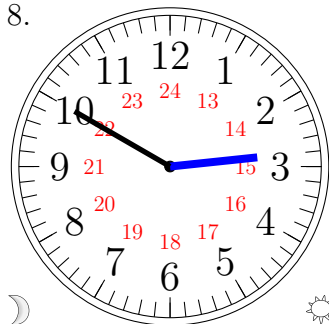
10:40

7.



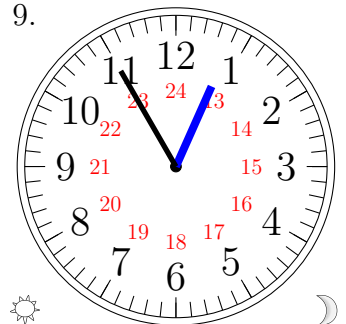
16:10

8.



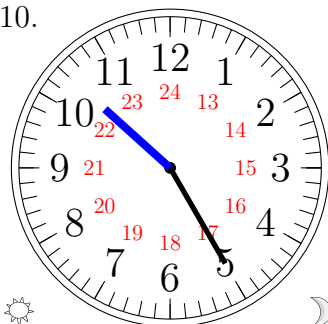
02:50

9.



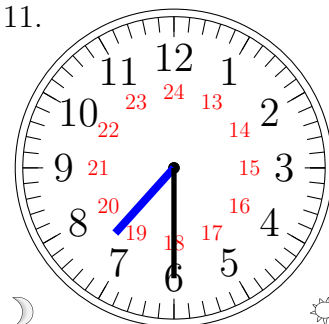
12:55

10.



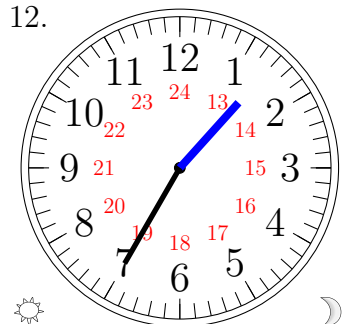
22:25

11.



07:30

12.

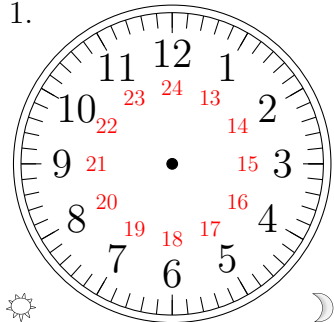


13:35

Sketching Analog Clocks (I)

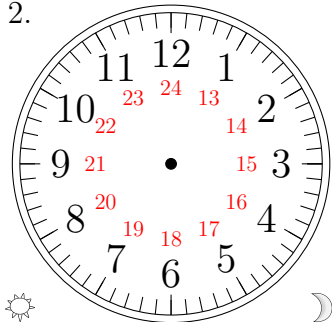
Sketch each time on the clock face above it.

1.



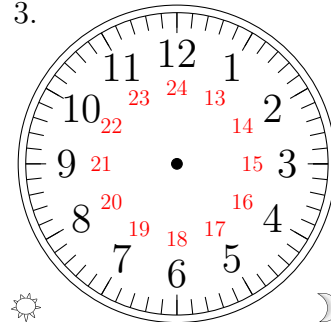
20:20

2.



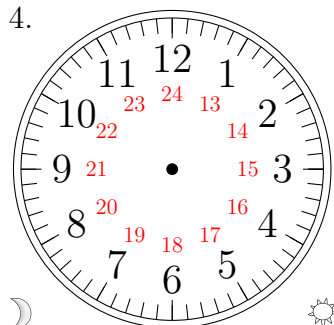
18:25

3.



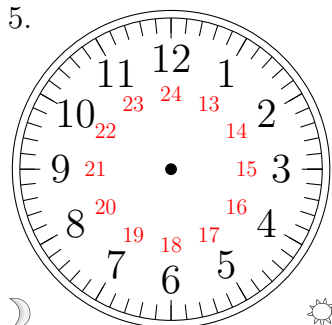
19:40

4.



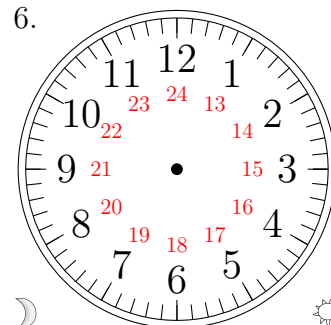
06:55

5.



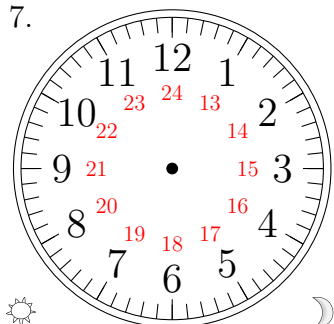
03:50

6.



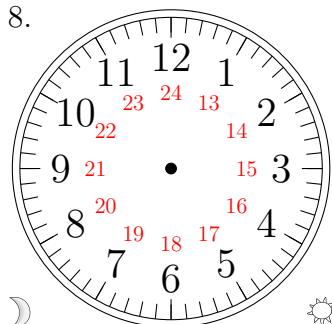
09:35

7.



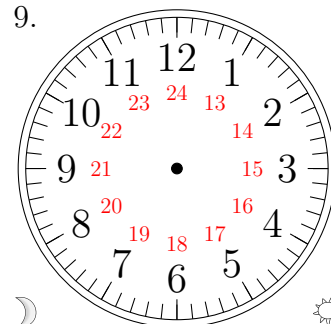
14:05

8.



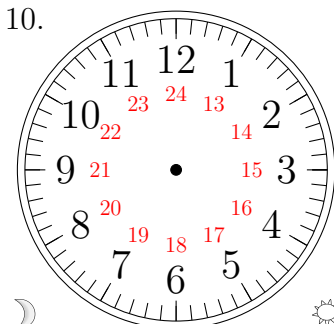
07:10

9.



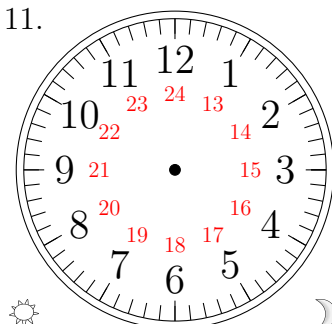
08:15

10.



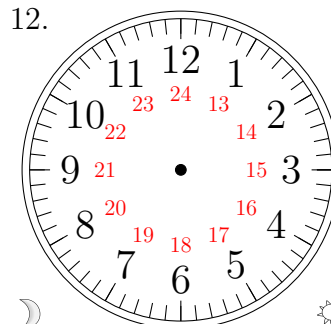
11:00

11.



22:30

12.

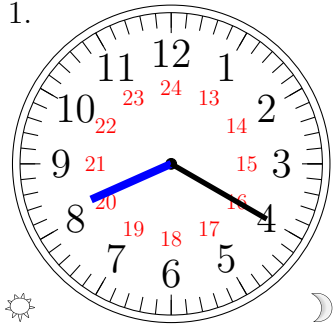


05:45

Sketching Analog Clocks (I) Answers

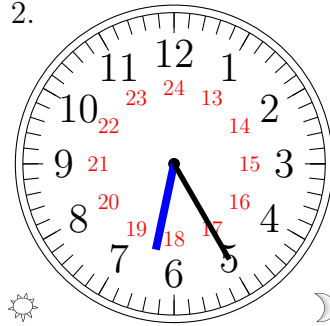
Sketch each time on the clock face above it.

1.



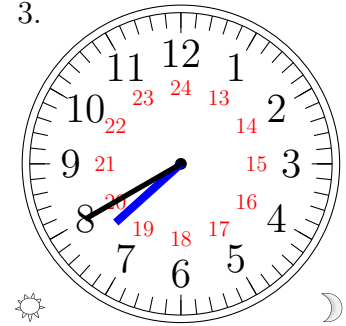
20:20

2.



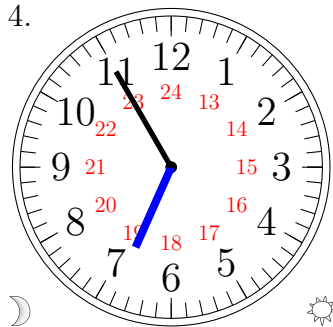
18:25

3.



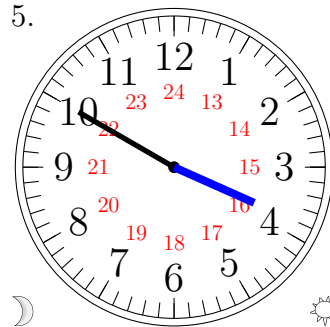
19:40

4.



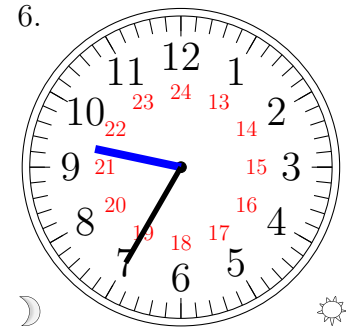
06:55

5.



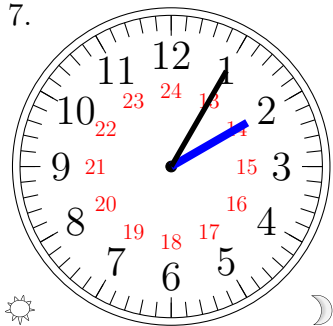
03:50

6.



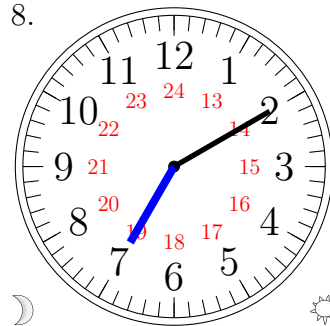
09:35

7.



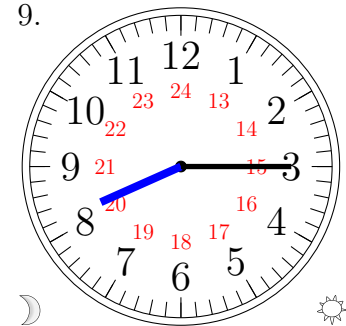
14:05

8.



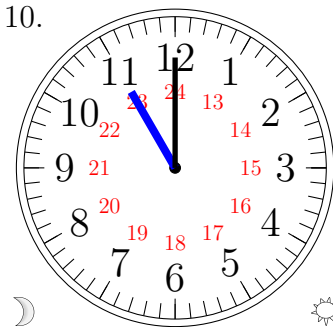
07:10

9.



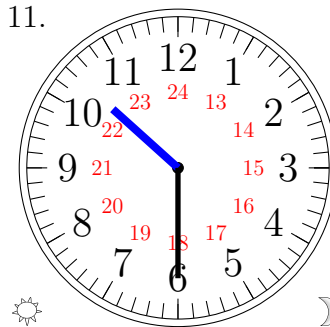
08:15

10.



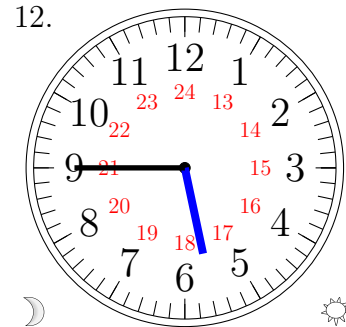
11:00

11.



22:30

12.

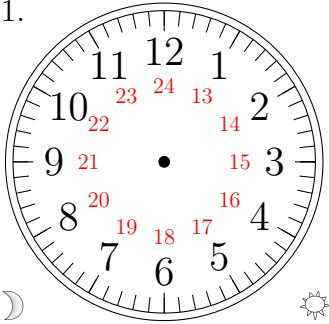


05:45

Sketching Analog Clocks (J)

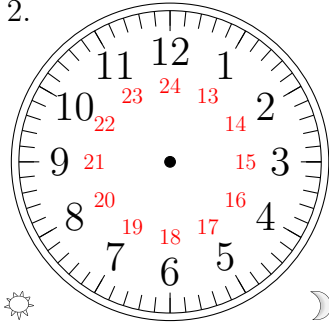
Sketch each time on the clock face above it.

1.



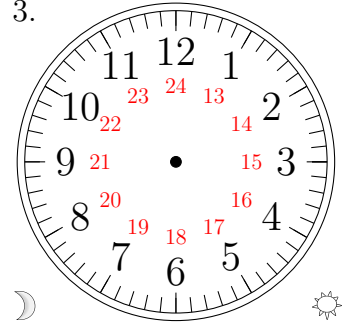
00:30

2.



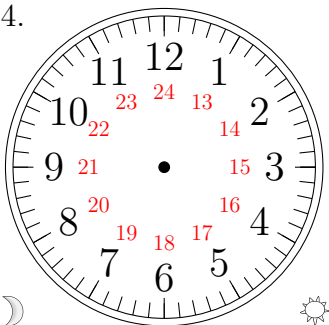
19:50

3.



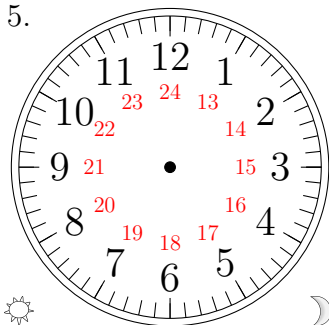
04:10

4.



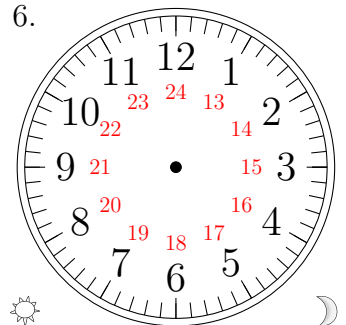
08:25

5.



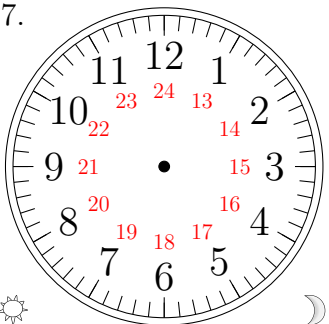
22:15

6.



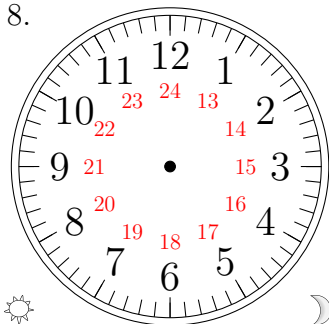
18:00

7.



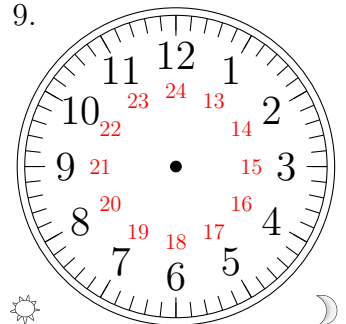
13:55

8.



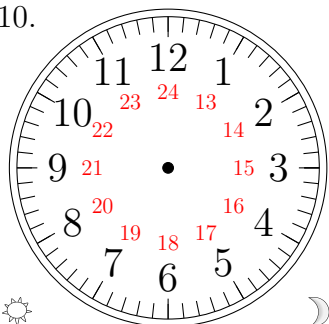
21:35

9.



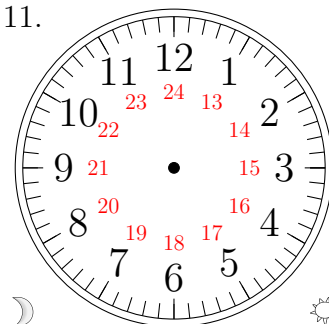
23:45

10.



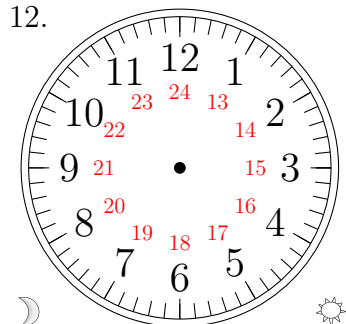
16:20

11.



02:40

12.

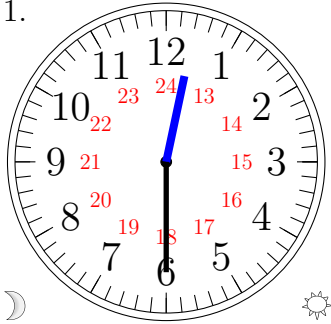


05:05

Sketching Analog Clocks (J) Answers

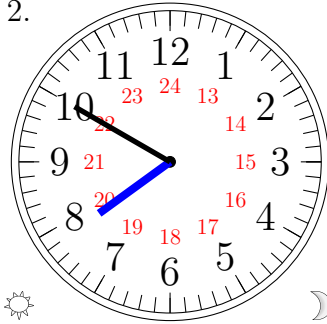
Sketch each time on the clock face above it.

1.



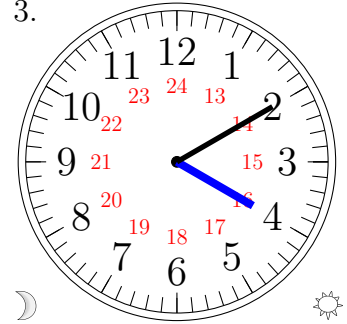
00:30

2.



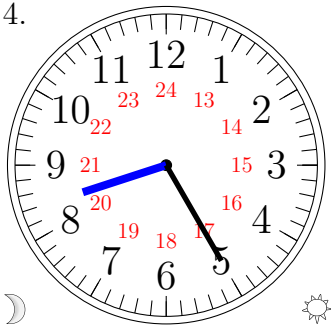
19:50

3.



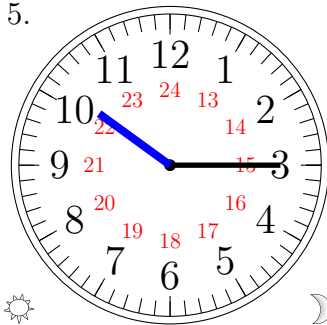
04:10

4.



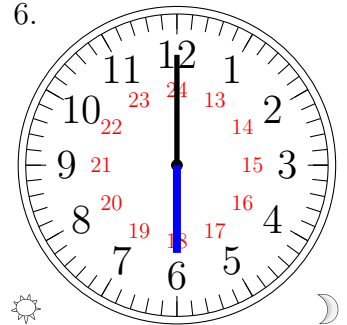
08:25

5.



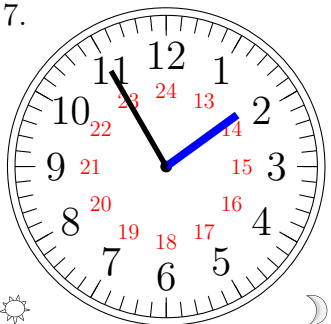
22:15

6.



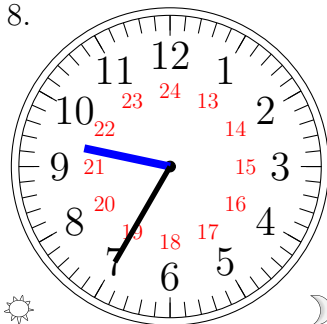
18:00

7.



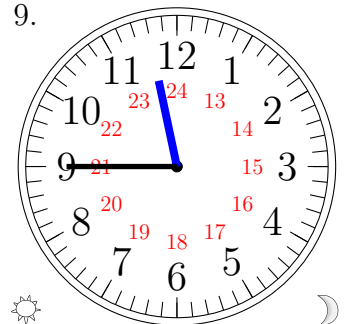
13:55

8.



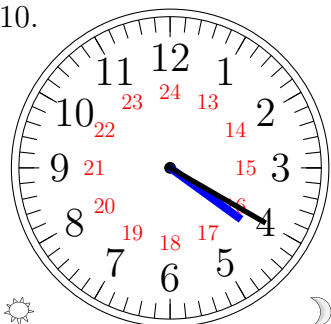
21:35

9.



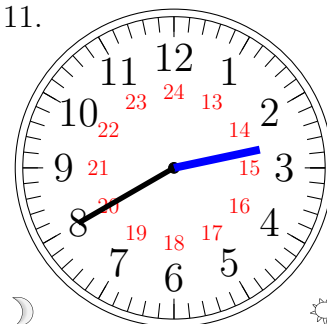
23:45

10.



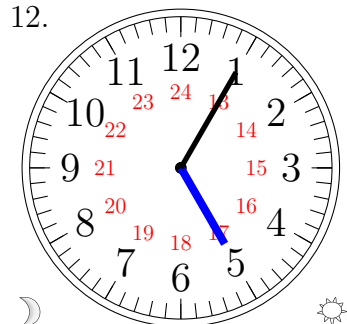
16:20

11.



02:40

12.



05:05