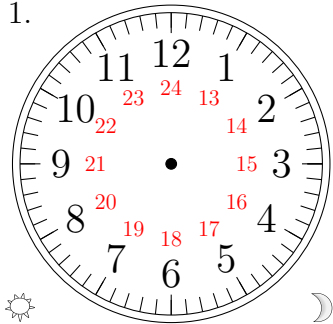


Sketching Analog Clocks (A)

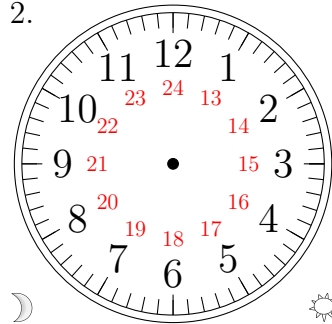
Sketch each time on the clock face above it.

1.



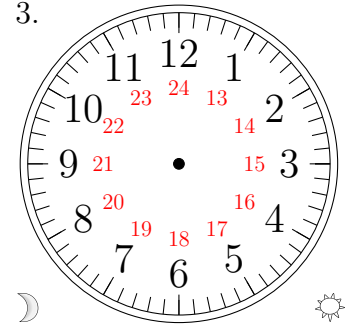
20:00

2.



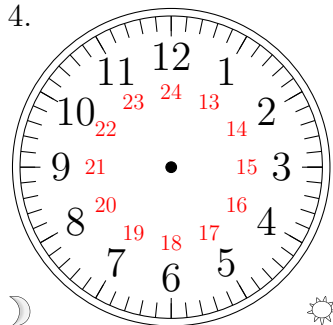
05:30

3.



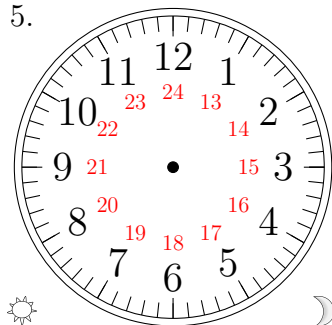
10:30

4.



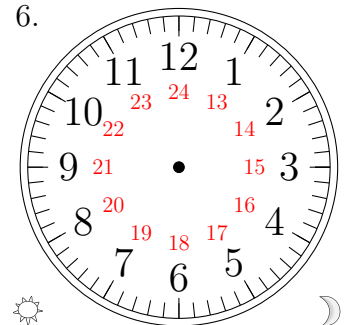
07:30

5.



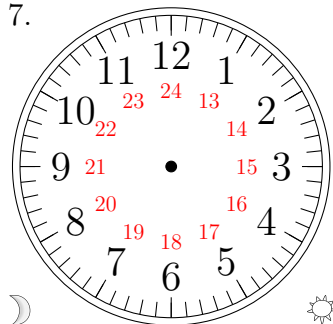
22:00

6.



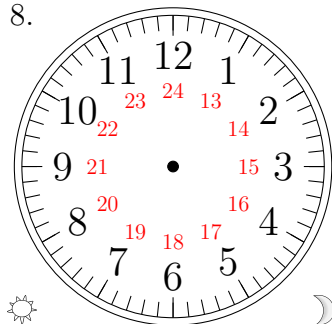
15:00

7.



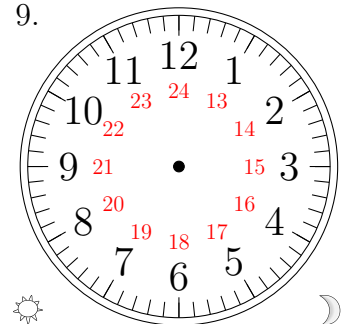
11:30

8.



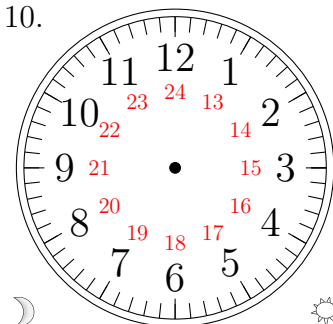
21:00

9.



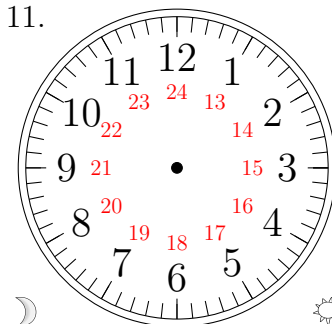
13:30

10.



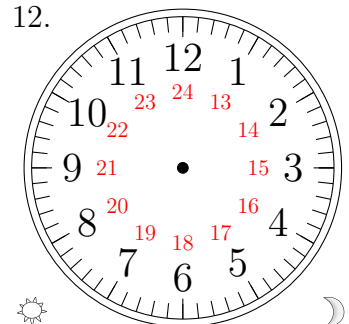
08:00

11.



04:30

12.

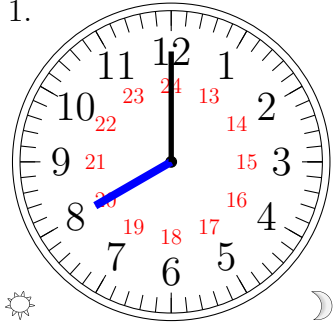


17:00

Sketching Analog Clocks (A) Answers

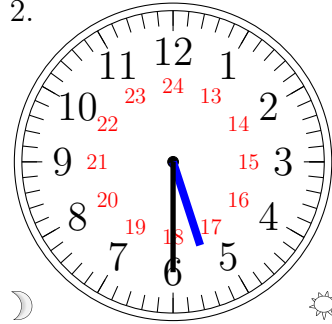
Sketch each time on the clock face above it.

1.



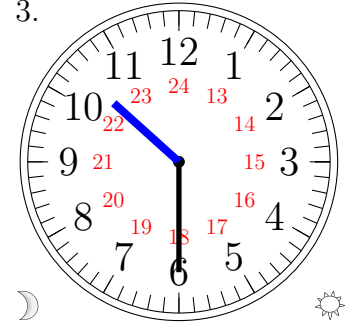
20:00

2.



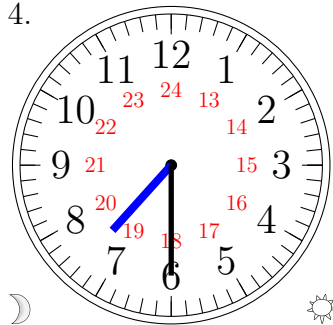
05:30

3.



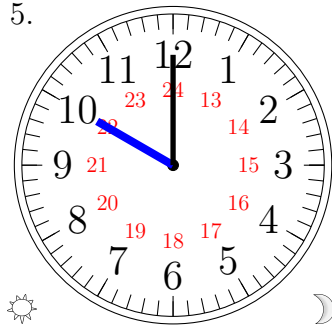
10:30

4.



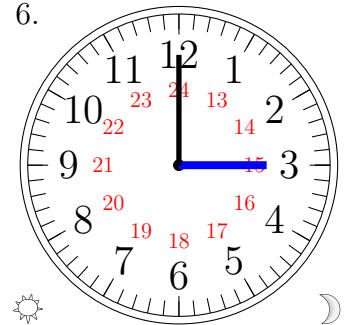
07:30

5.



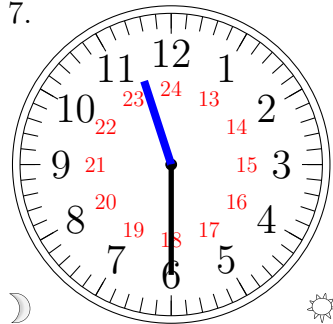
22:00

6.



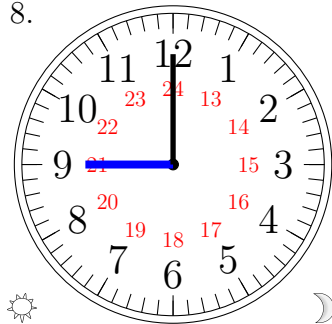
15:00

7.



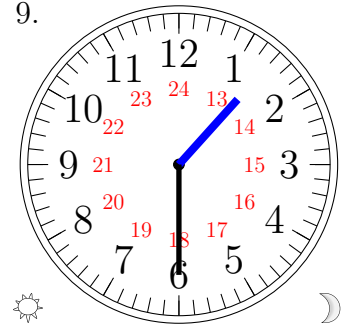
11:30

8.



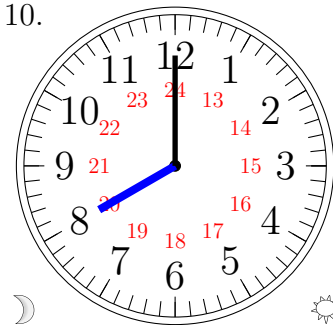
21:00

9.



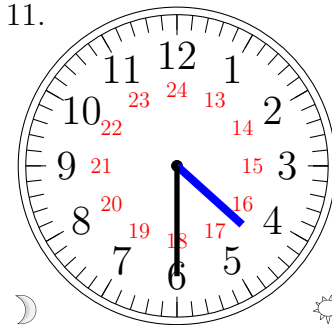
13:30

10.



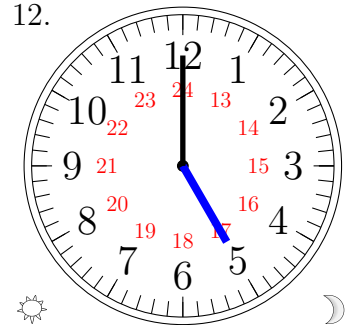
08:00

11.



04:30

12.



17:00