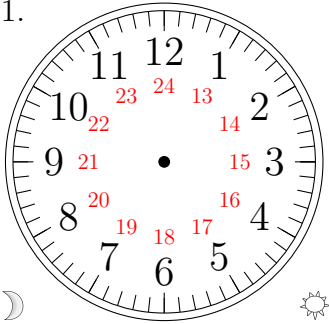


Sketching Analog Clocks (A)

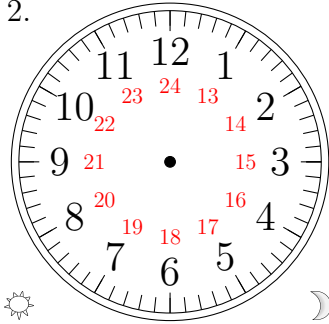
Sketch each time on the clock face above it.

1.



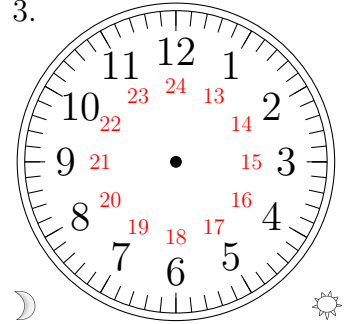
08:00

2.



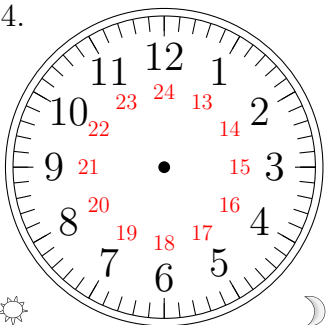
13:00

3.



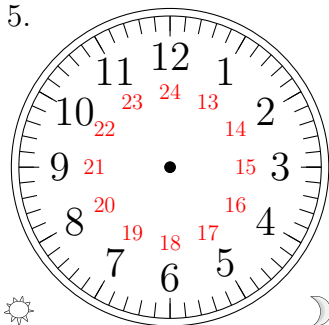
02:00

4.



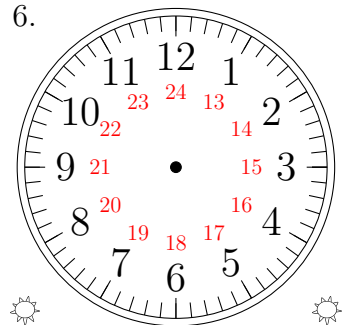
19:00

5.



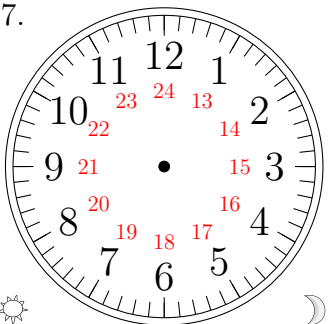
22:00

6.



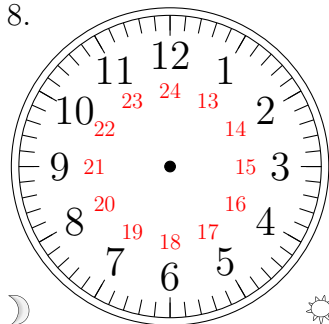
12:00

7.



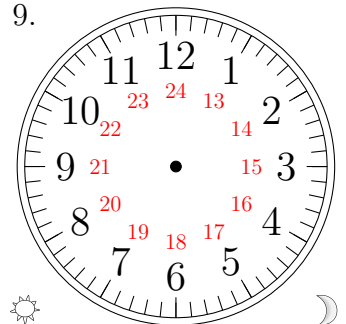
14:00

8.



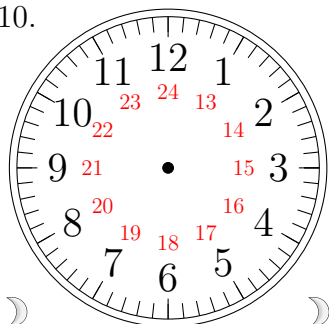
10:00

9.



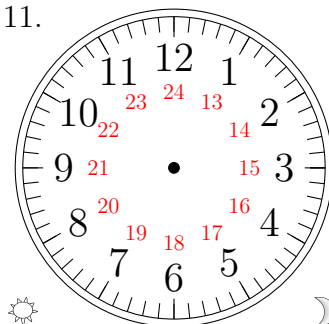
20:00

10.



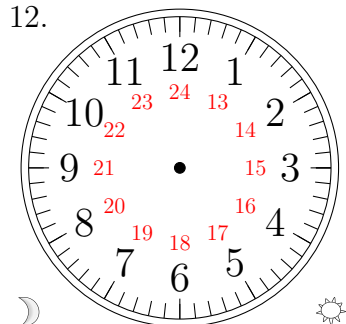
00:00

11.



23:00

12.

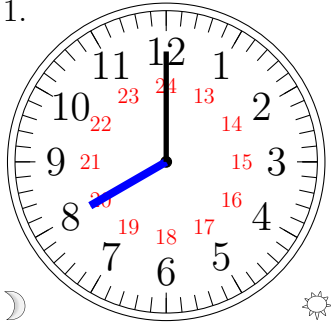


07:00

Sketching Analog Clocks (A) Answers

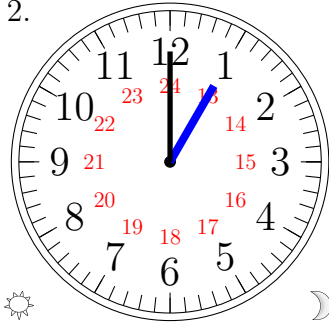
Sketch each time on the clock face above it.

1.



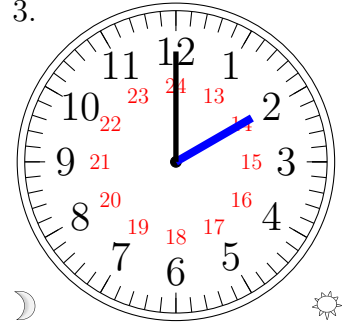
08:00

2.



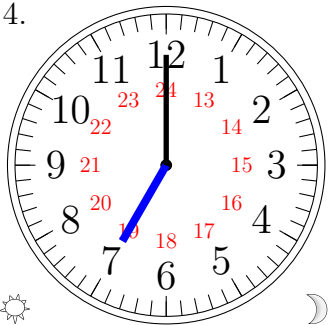
13:00

3.



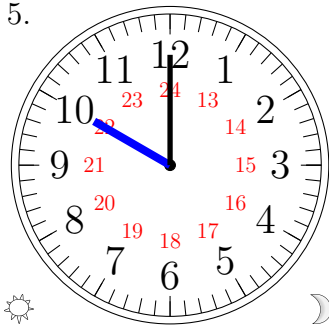
02:00

4.



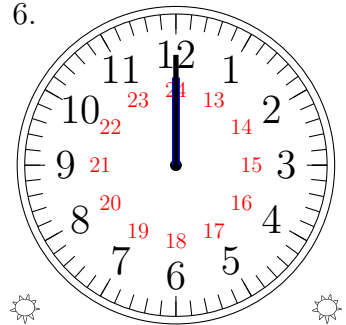
19:00

5.



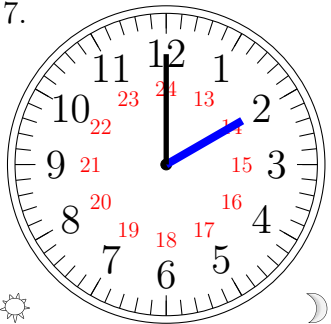
22:00

6.



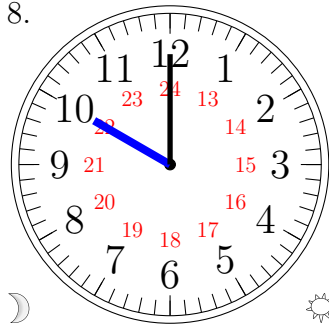
12:00

7.



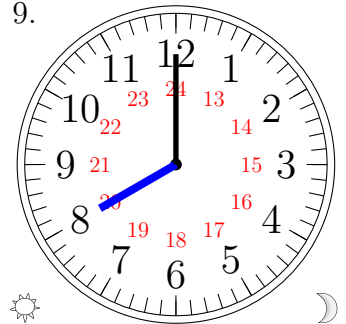
14:00

8.



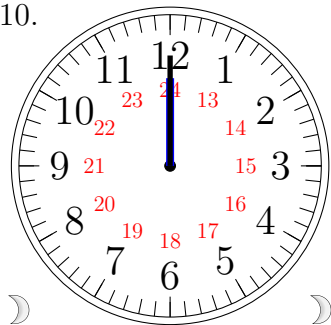
10:00

9.



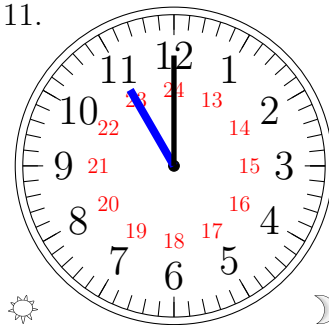
20:00

10.



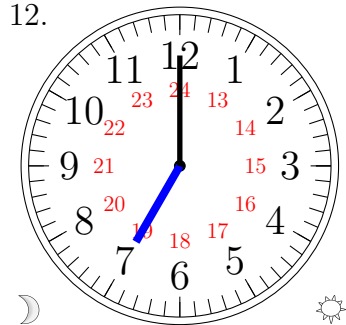
00:00

11.



23:00

12.



07:00