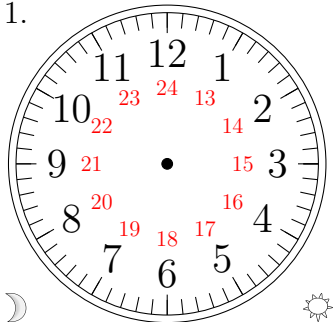


# Sketching Analog Clocks (A)

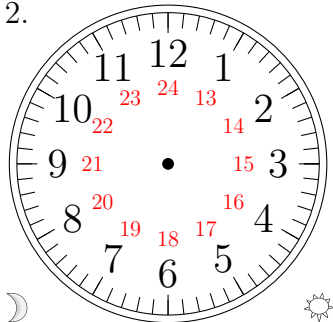
Sketch each time on the clock face above it.

1.



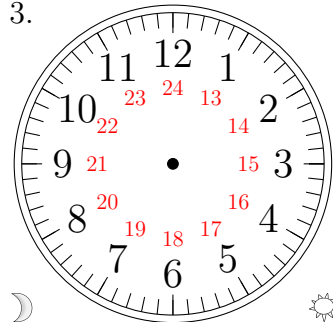
07:58:23

2.



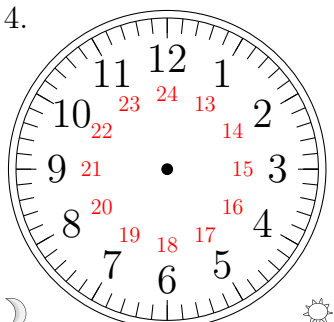
01:05:24

3.



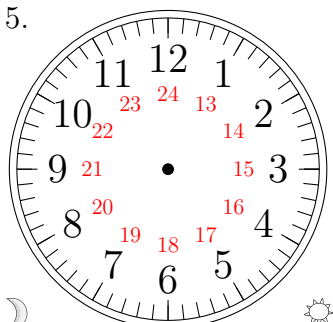
03:18:55

4.



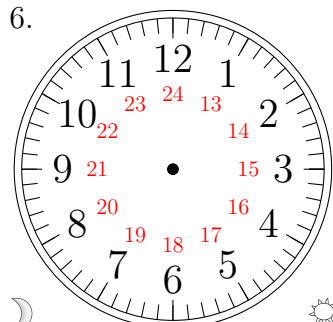
00:50:31

5.



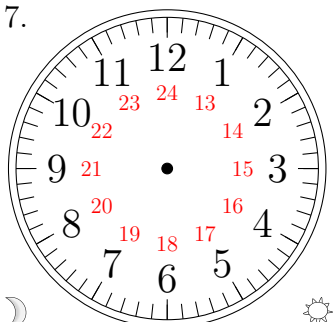
08:24:42

6.



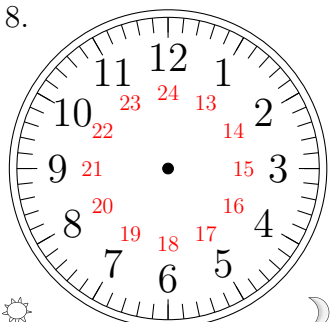
06:27:51

7.



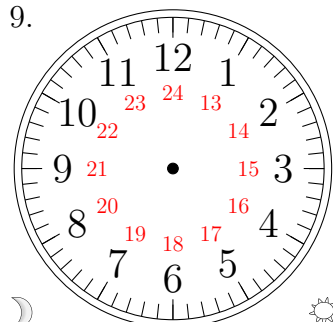
02:12:48

8.



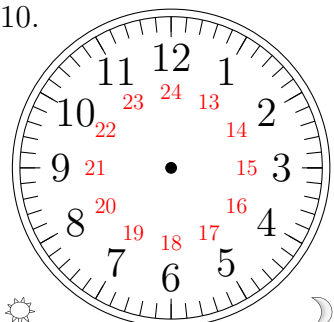
22:54:12

9.



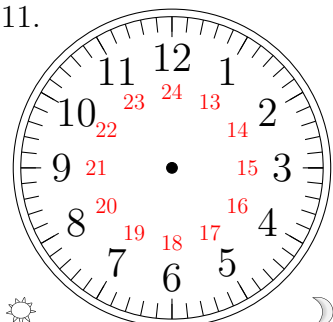
05:26:26

10.



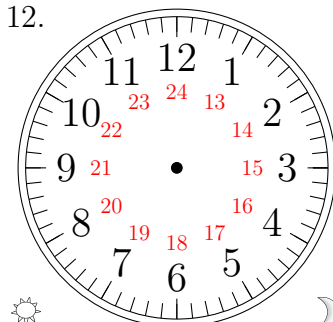
12:16:33

11.



15:04:56

12.

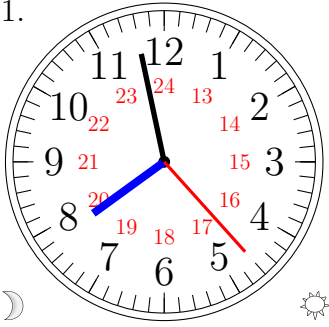


20:56:08

# Sketching Analog Clocks (A) Answers

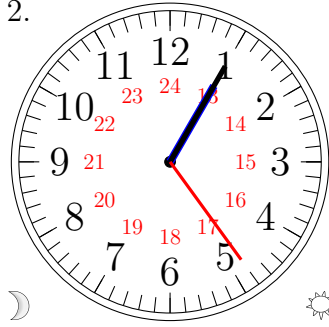
Sketch each time on the clock face above it.

1.



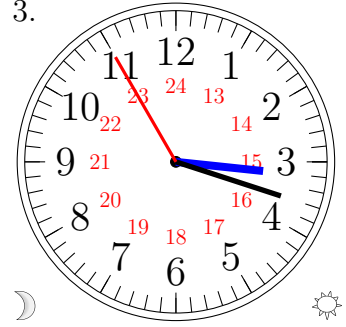
07:58:23

2.



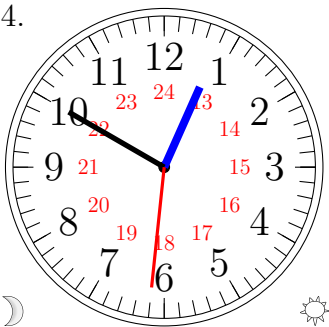
01:05:24

3.



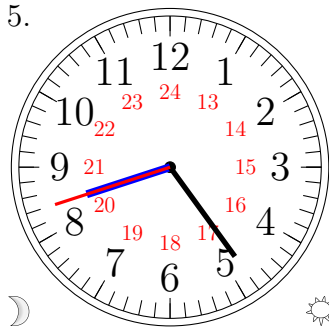
03:18:55

4.



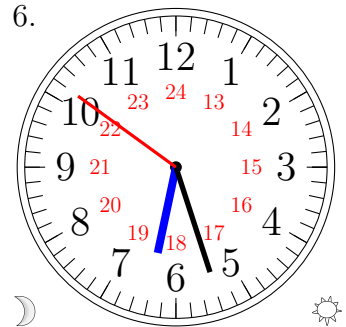
00:50:31

5.



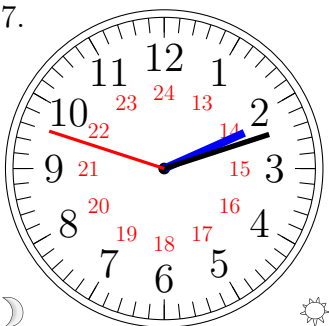
08:24:42

6.



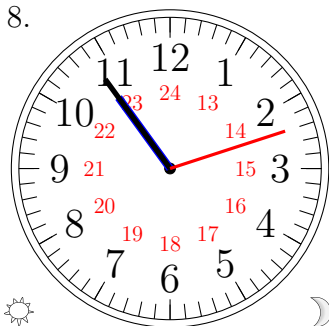
06:27:51

7.



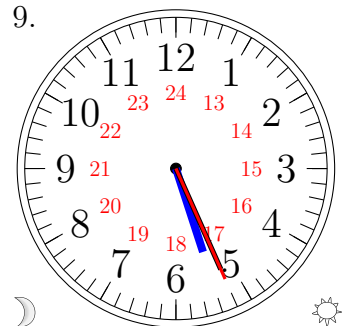
02:12:48

8.



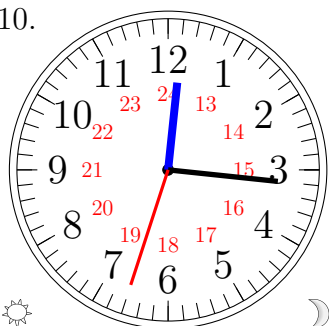
22:54:12

9.



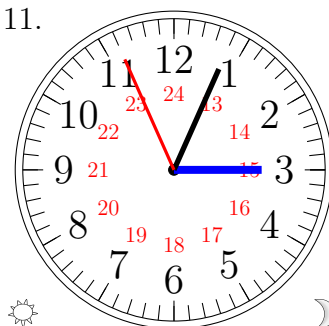
05:26:26

10.



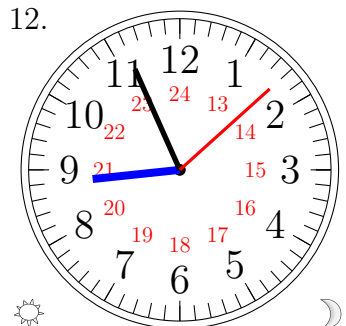
12:16:33

11.



15:04:56

12.



20:56:08