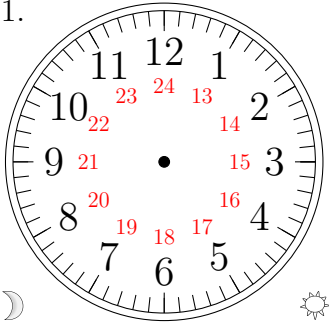


Sketching Analog Clocks (C)

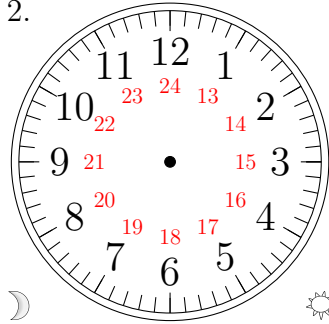
Sketch each time on the clock face above it.

1.



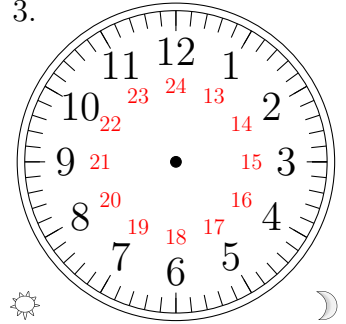
11:26:40

2.



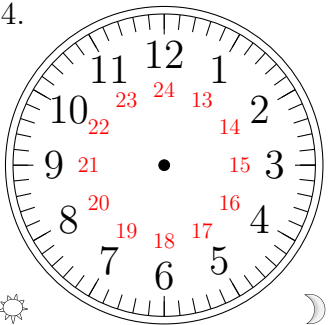
00:34:50

3.



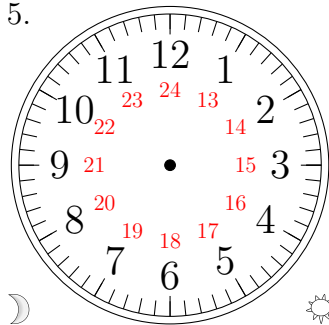
18:22:17

4.



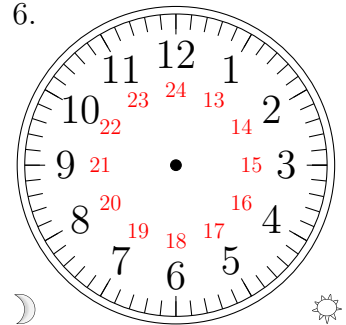
23:38:29

5.



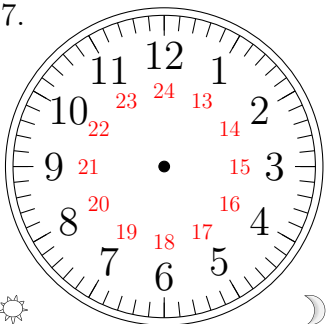
04:09:27

6.



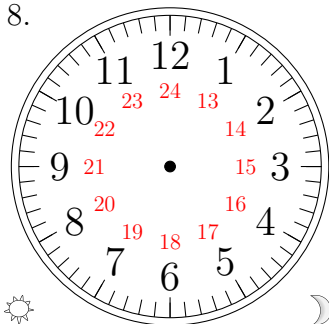
06:13:33

7.



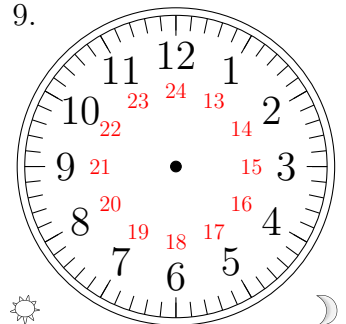
17:56:23

8.



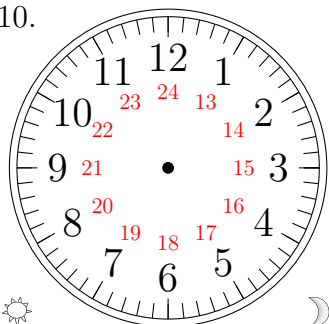
12:00:22

9.



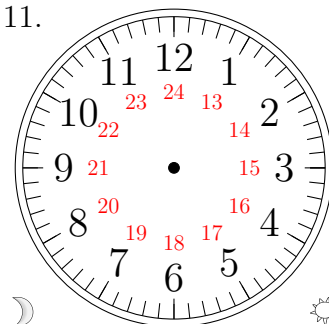
20:19:16

10.



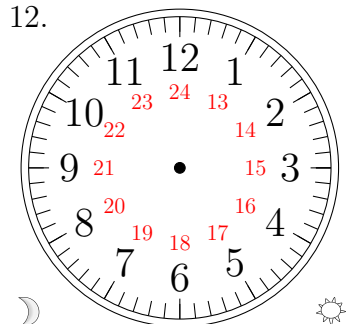
21:30:28

11.



01:15:36

12.

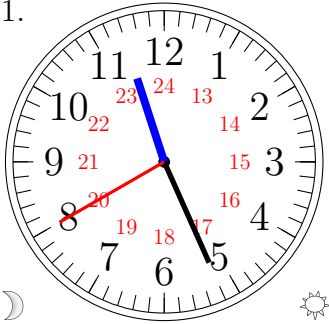


08:43:06

Sketching Analog Clocks (C) Answers

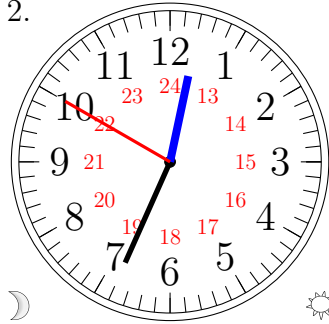
Sketch each time on the clock face above it.

1.



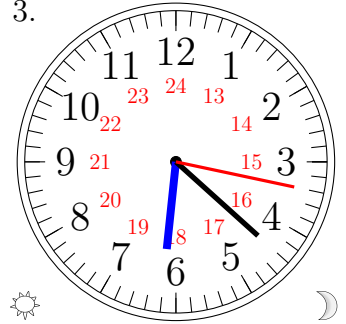
11:26:40

2.



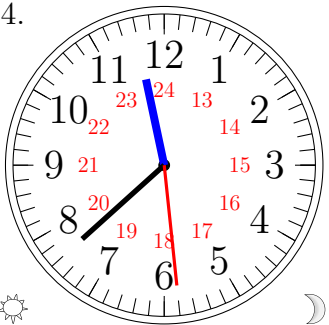
00:34:50

3.



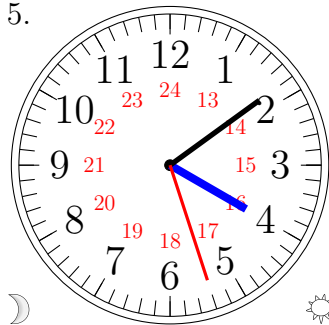
18:22:17

4.



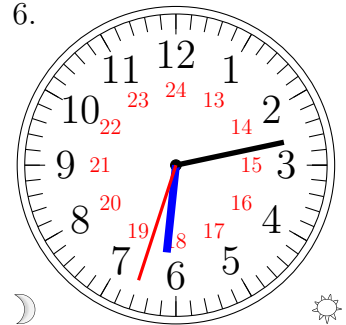
23:38:29

5.



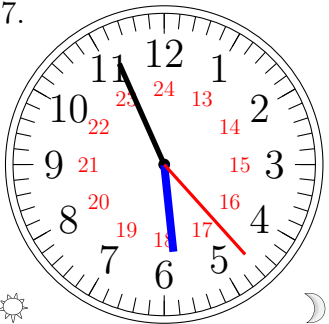
04:09:27

6.



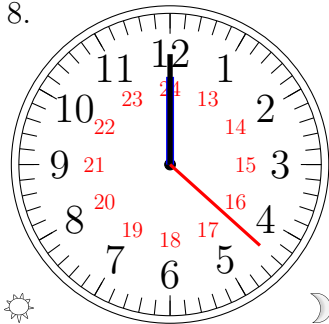
06:13:33

7.



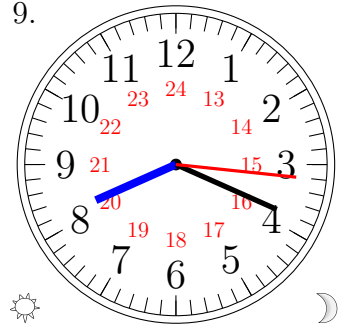
17:56:23

8.



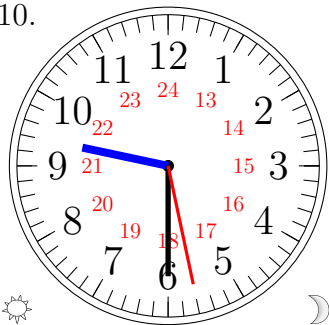
12:00:22

9.



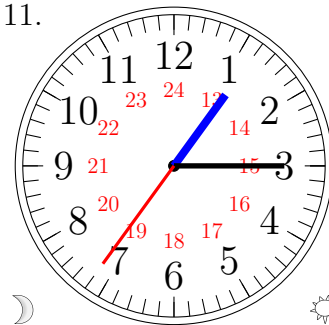
20:19:16

10.



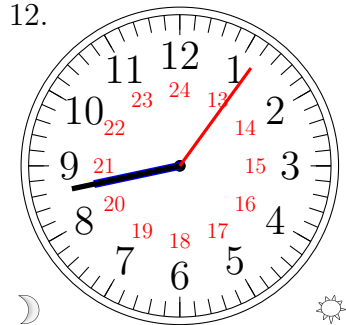
21:30:28

11.



01:15:36

12.



08:43:06