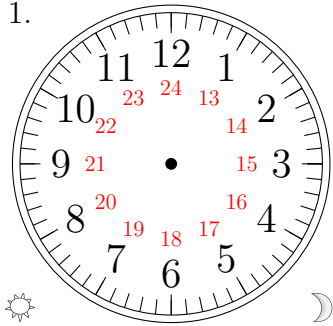


Sketching Analog Clocks (D)

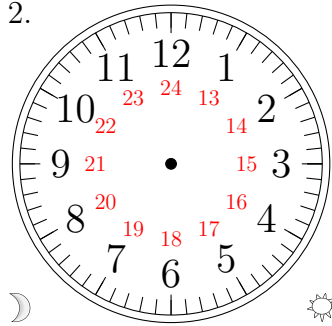
Sketch each time on the clock face above it.

1.



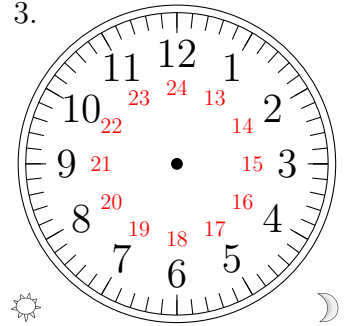
23:44:11

2.



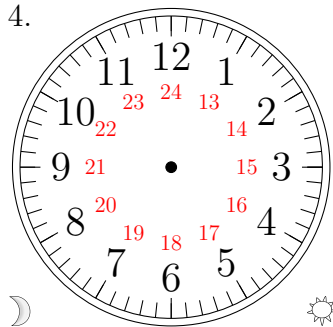
07:32:23

3.



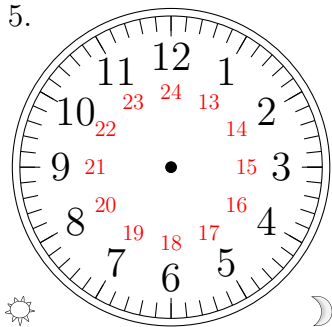
13:19:54

4.



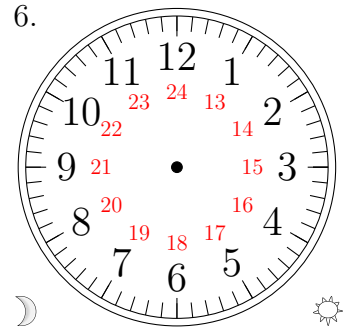
11:20:14

5.



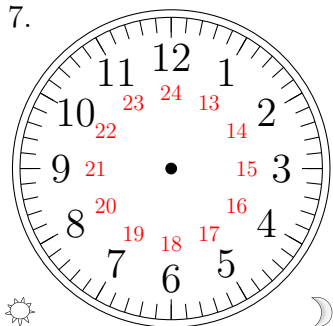
16:58:16

6.



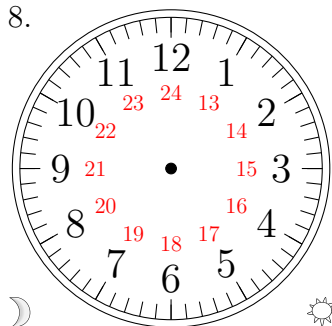
08:22:07

7.



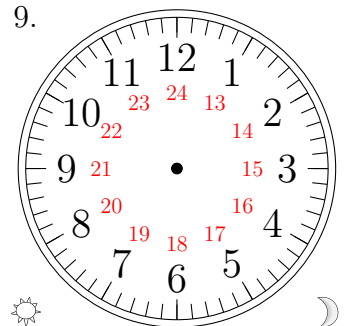
15:40:35

8.



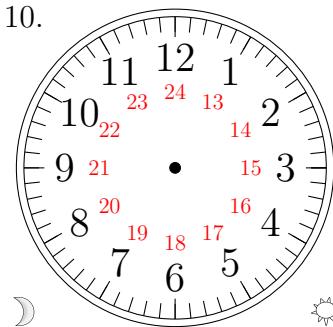
09:10:50

9.



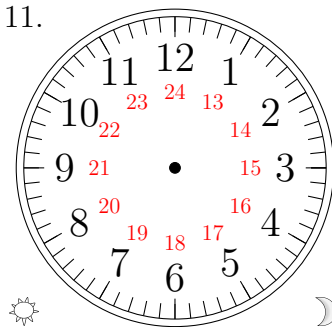
14:24:00

10.



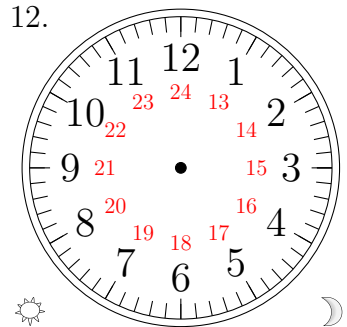
04:57:12

11.



17:34:32

12.

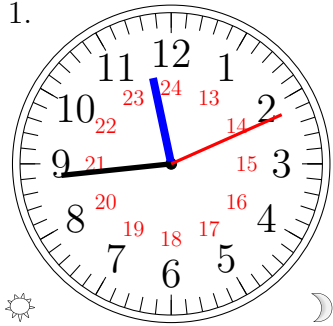


18:41:43

Sketching Analog Clocks (D) Answers

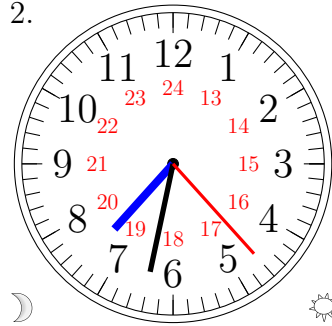
Sketch each time on the clock face above it.

1.



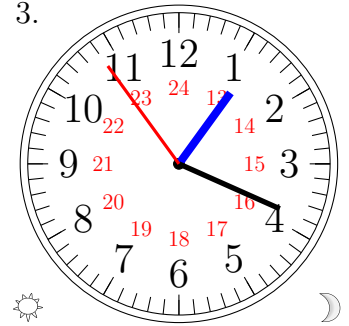
23:44:11

2.



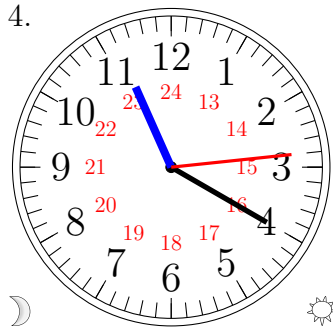
07:32:23

3.



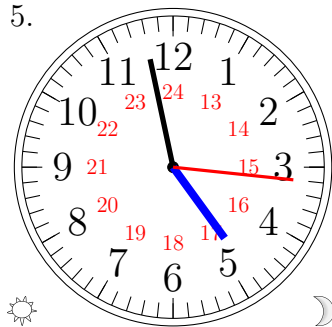
13:19:54

4.



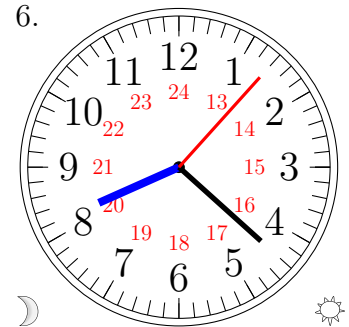
11:20:14

5.



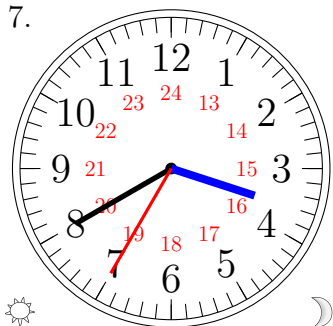
16:58:16

6.



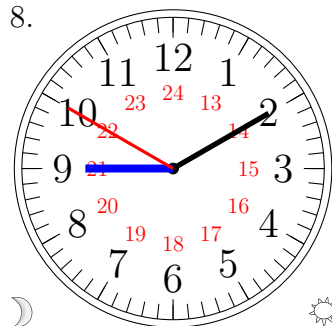
08:22:07

7.



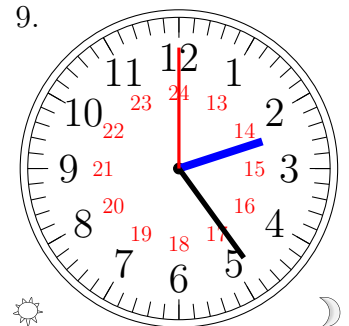
15:40:35

8.



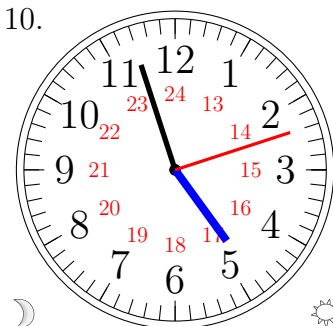
09:10:50

9.



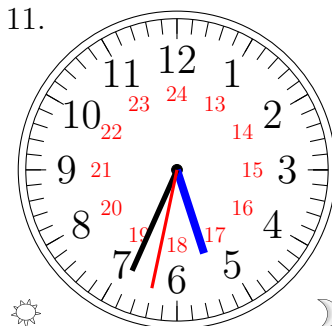
14:24:00

10.



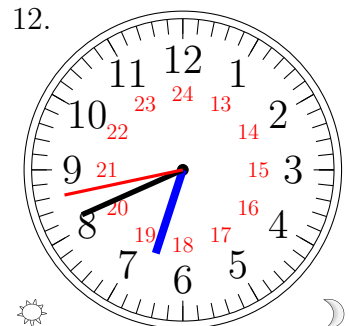
04:57:12

11.



17:34:32

12.



18:41:43