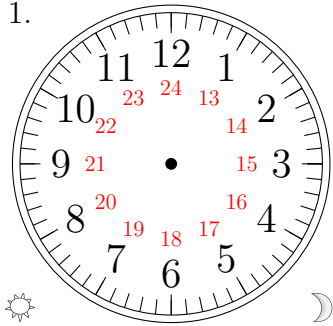


Sketching Analog Clocks (F)

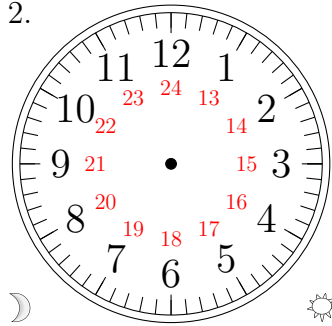
Sketch each time on the clock face above it.

1.



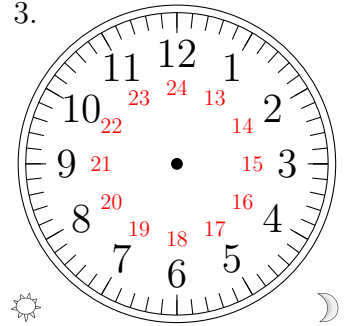
20:42:03

2.



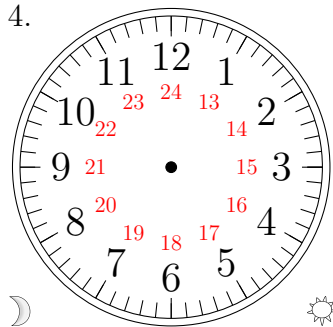
10:53:10

3.



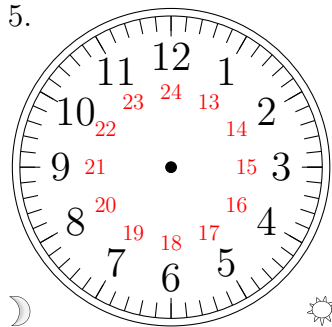
14:49:32

4.



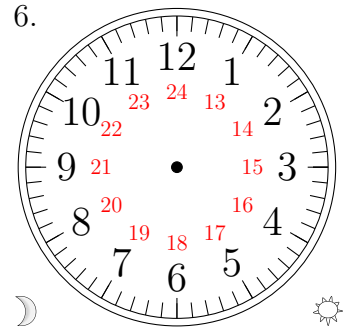
03:39:48

5.



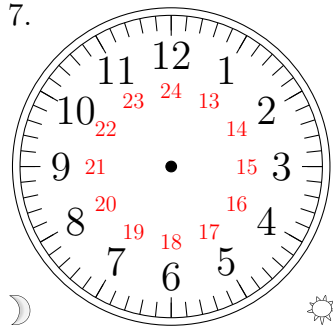
00:35:08

6.



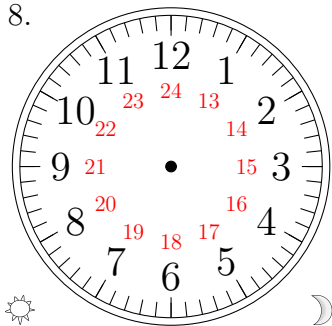
08:22:07

7.



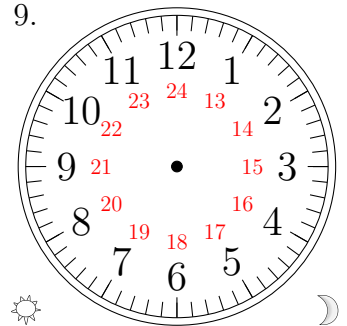
07:05:40

8.



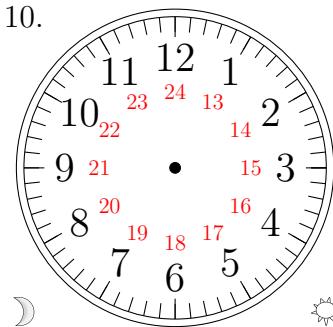
15:38:04

9.



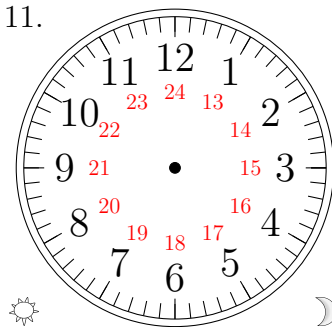
12:28:28

10.



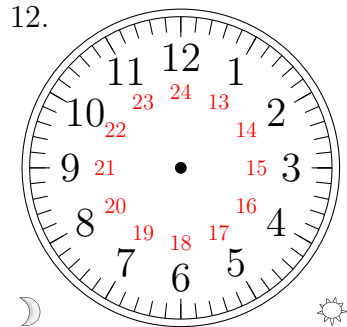
11:19:58

11.



22:11:55

12.

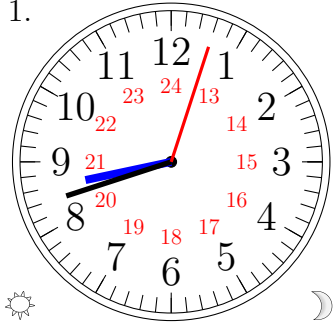


04:59:27

Sketching Analog Clocks (F) Answers

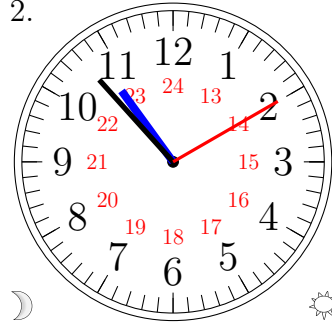
Sketch each time on the clock face above it.

1.



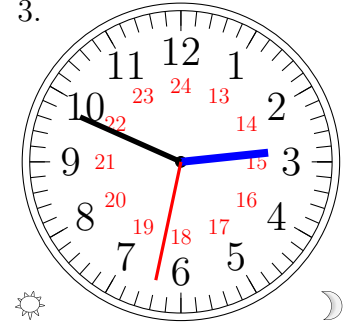
20:42:03

2.



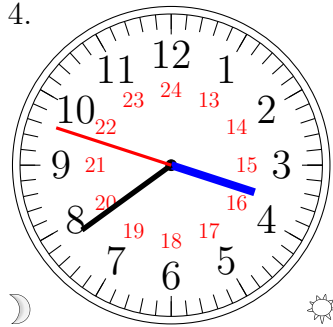
10:53:10

3.



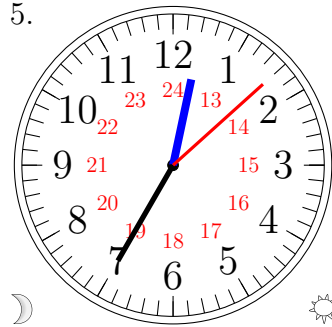
14:49:32

4.



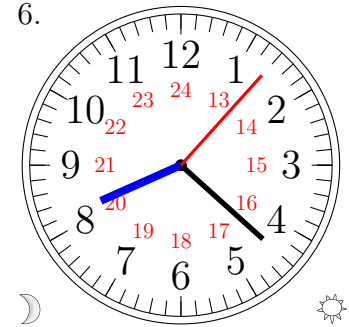
03:39:48

5.



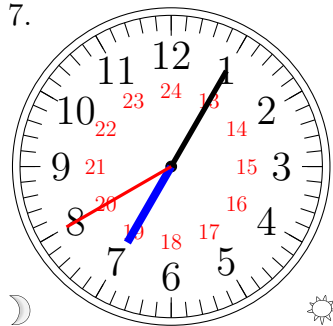
00:35:08

6.



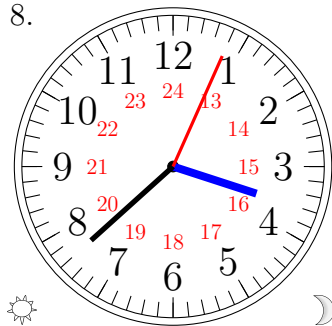
08:22:07

7.



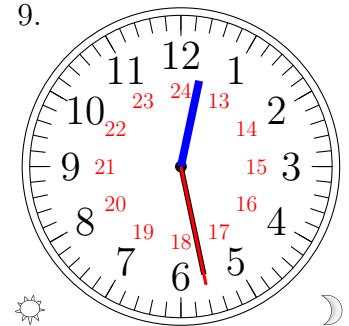
07:05:40

8.



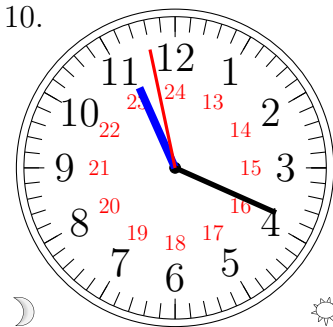
15:38:04

9.



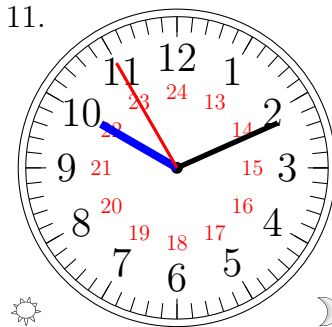
12:28:28

10.



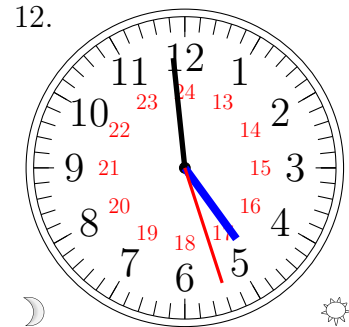
11:19:58

11.



22:11:55

12.



04:59:27