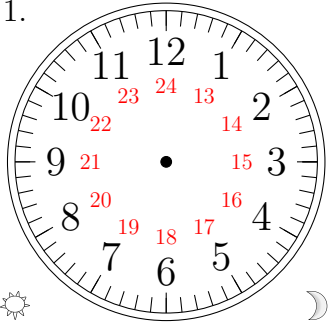


Sketching Analog Clocks (A)

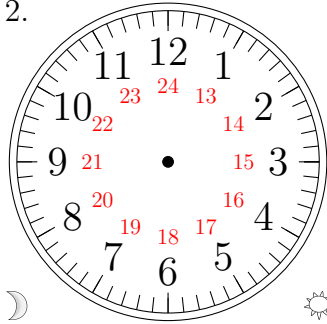
Sketch each time on the clock face above it.

1.



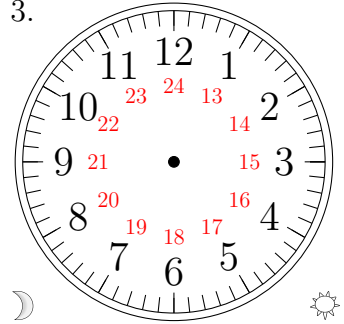
12:17:10

2.



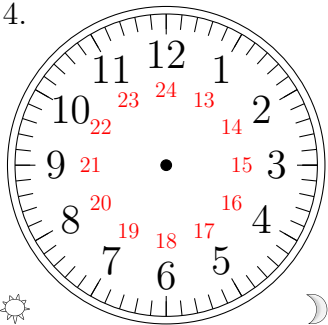
07:34:45

3.



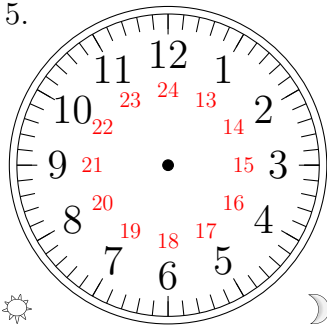
05:47:00

4.



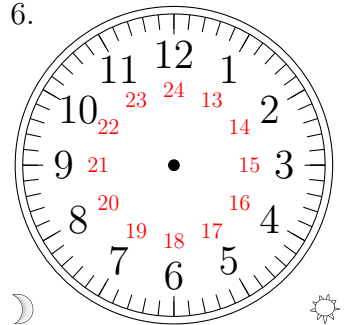
18:01:15

5.



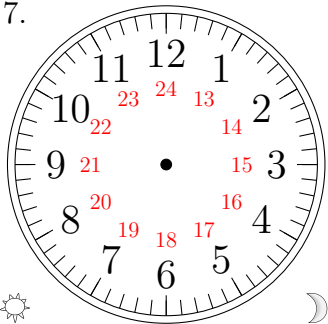
20:36:50

6.



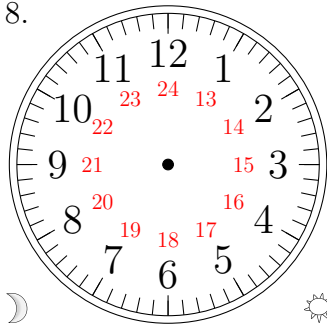
04:44:05

7.



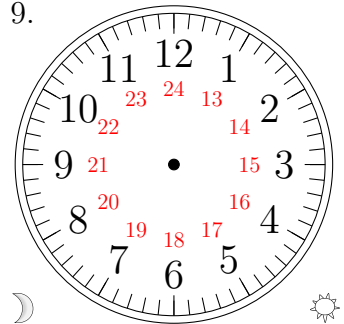
23:41:20

8.



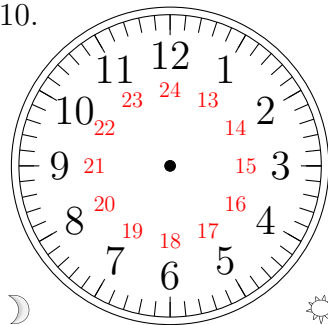
00:11:30

9.



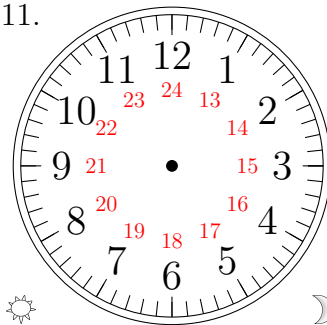
03:02:25

10.



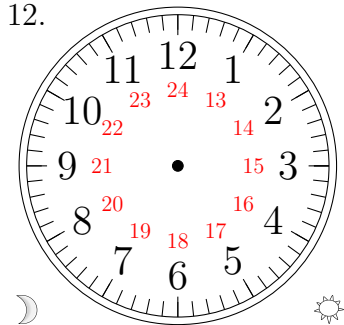
06:16:35

11.



15:15:55

12.

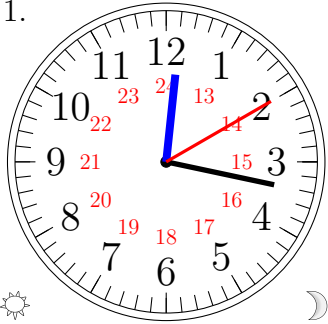


10:32:40

Sketching Analog Clocks (A) Answers

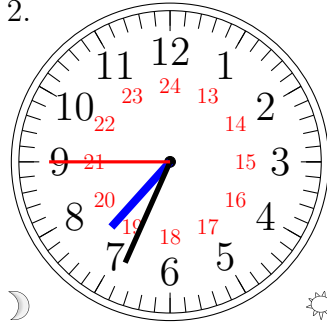
Sketch each time on the clock face above it.

1.



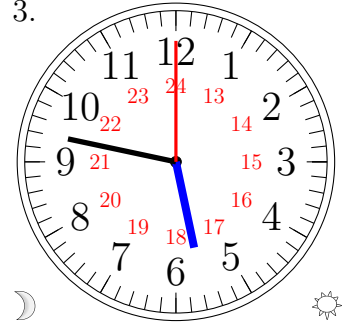
12:17:10

2.



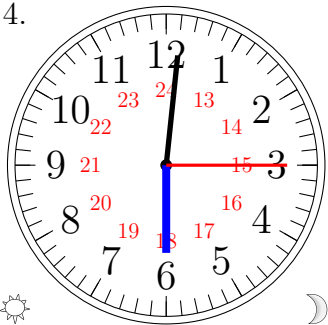
07:34:45

3.



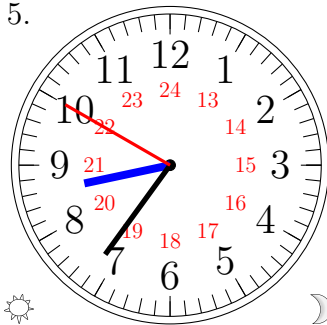
05:47:00

4.



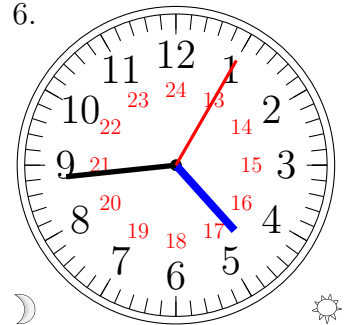
18:01:15

5.



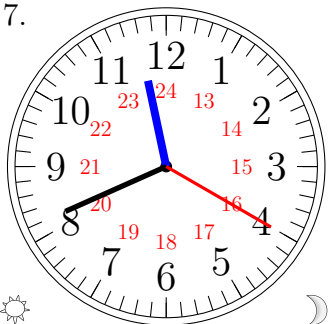
20:36:50

6.



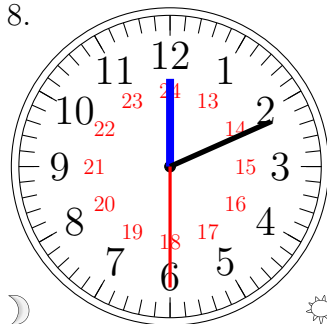
04:44:05

7.



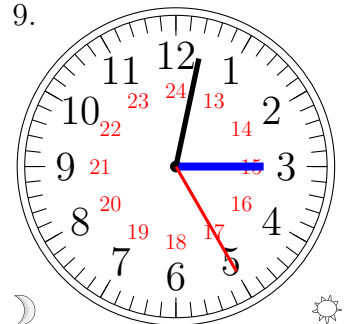
23:41:20

8.



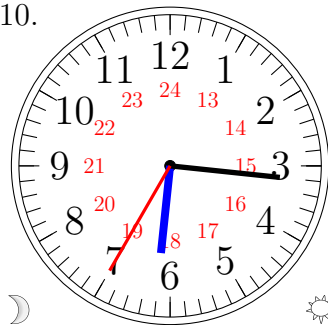
00:11:30

9.



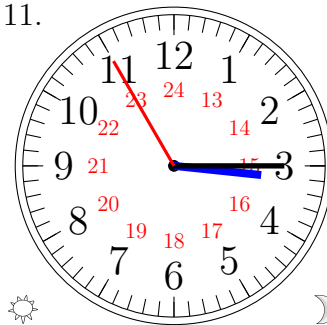
03:02:25

10.



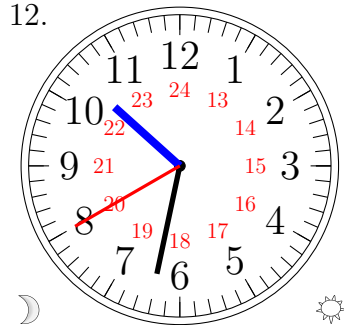
06:16:35

11.



15:15:55

12.



10:32:40