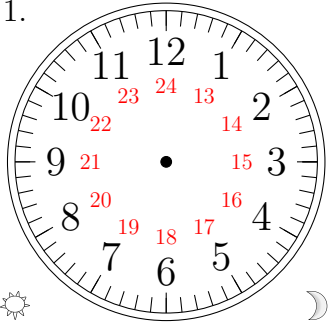


Sketching Analog Clocks (C)

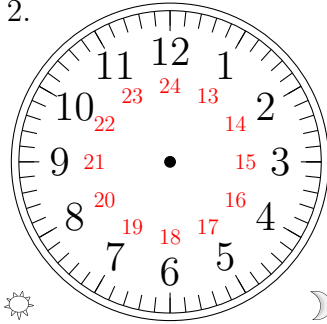
Sketch each time on the clock face above it.

1.



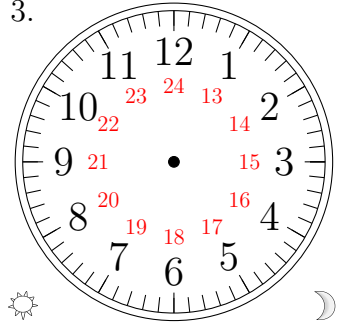
22:03:35

2.



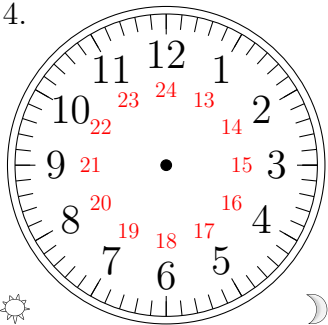
14:58:15

3.



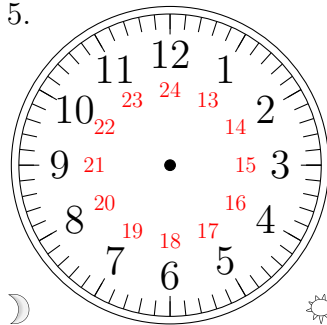
13:27:55

4.



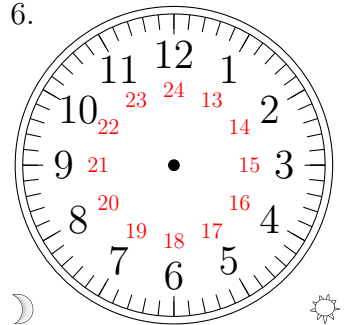
17:42:10

5.



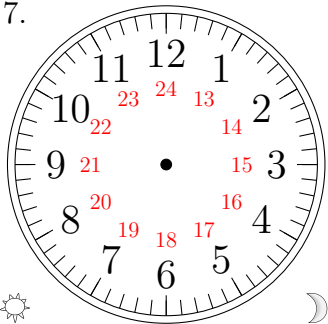
07:08:50

6.



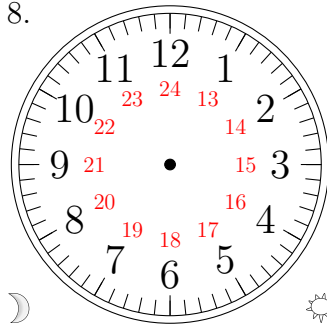
04:55:00

7.



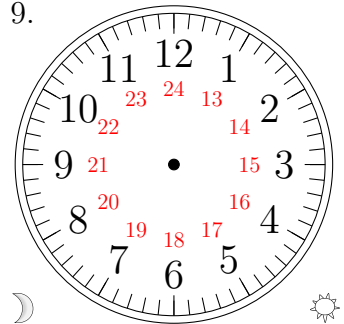
19:33:25

8.



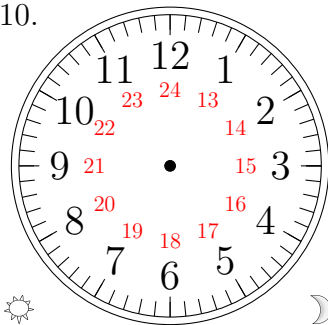
05:23:40

9.



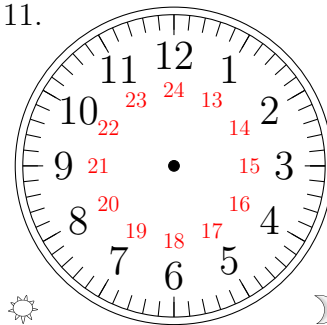
03:43:45

10.



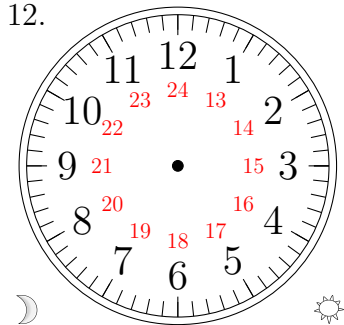
15:18:30

11.



20:10:05

12.

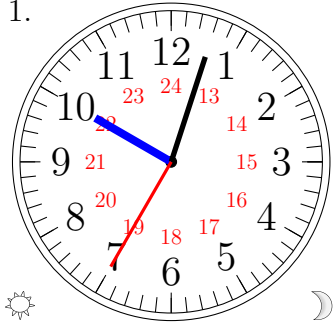


06:52:20

Sketching Analog Clocks (C) Answers

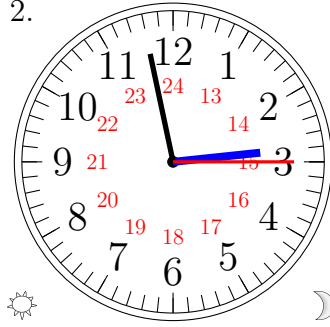
Sketch each time on the clock face above it.

1.



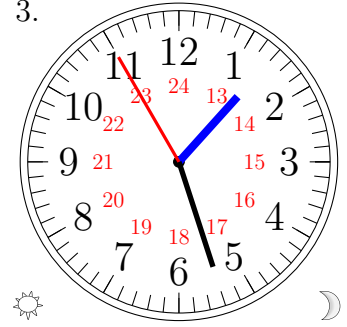
22:03:35

2.



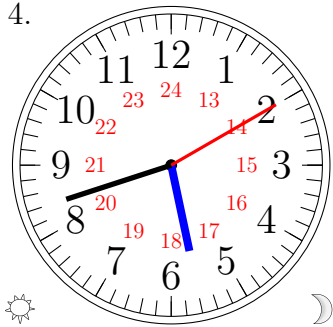
14:58:15

3.



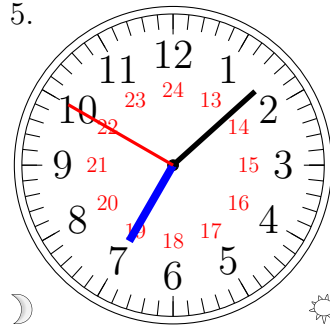
13:27:55

4.



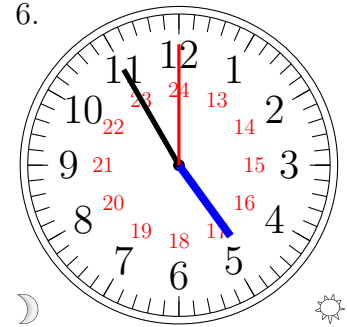
17:42:10

5.



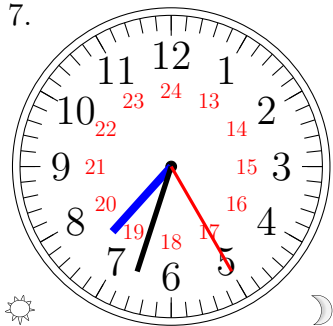
07:08:50

6.



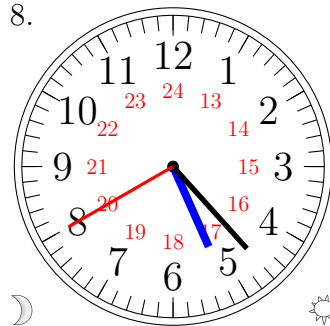
04:55:00

7.



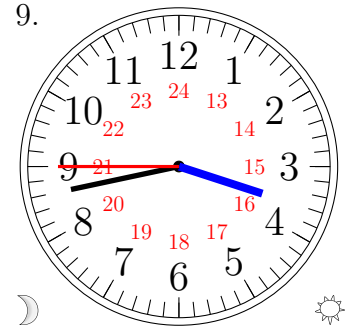
19:33:25

8.



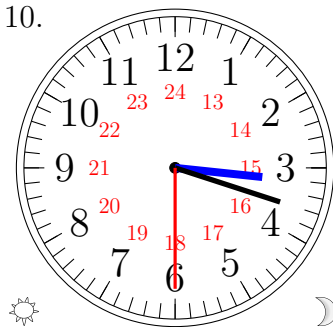
05:23:40

9.



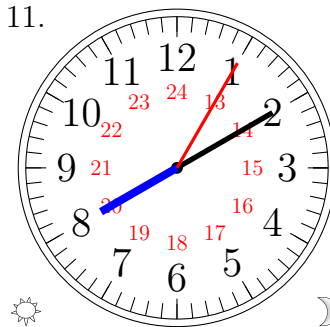
03:43:45

10.



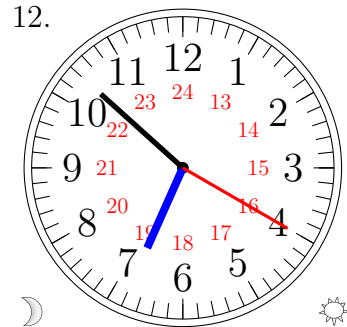
15:18:30

11.



20:10:05

12.



06:52:20