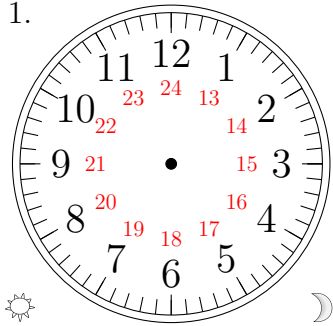


# Sketching Analog Clocks (J)

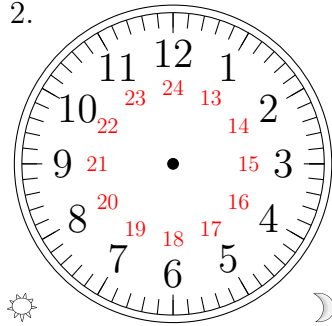
Sketch each time on the clock face above it.

1.



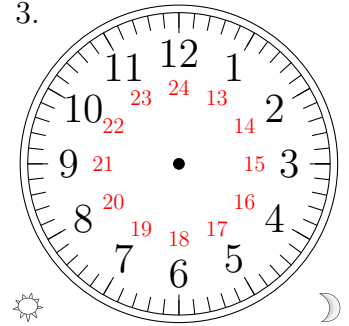
13:09:50

2.



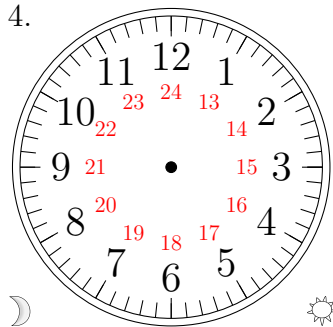
12:05:10

3.



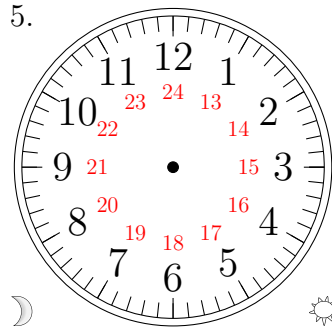
16:41:30

4.



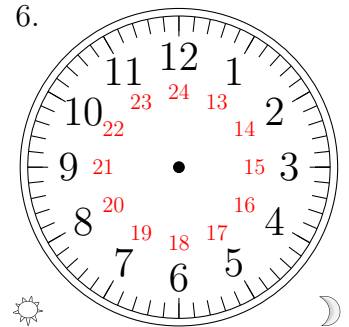
07:45:40

5.



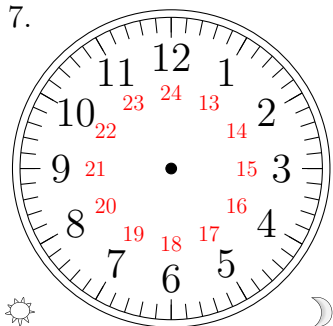
09:43:25

6.



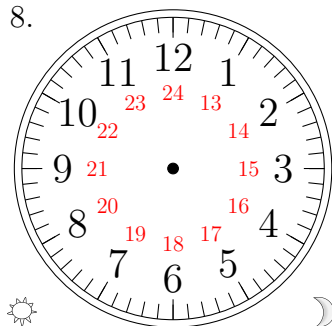
17:25:05

7.



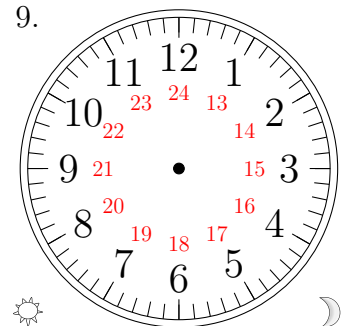
14:11:55

8.



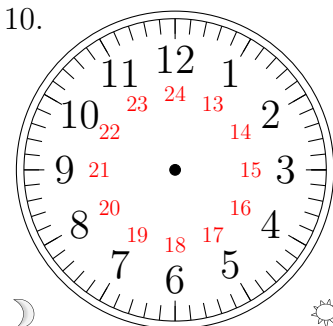
18:57:45

9.



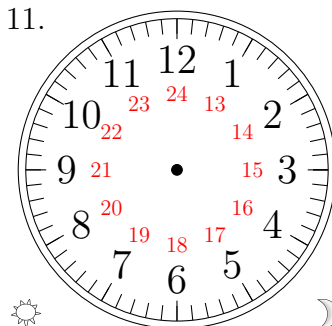
15:19:20

10.



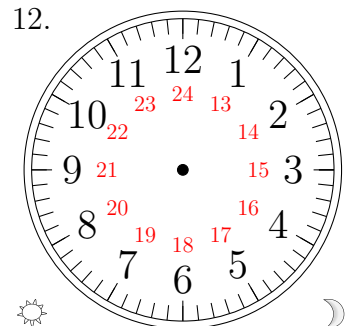
03:56:00

11.



21:28:15

12.

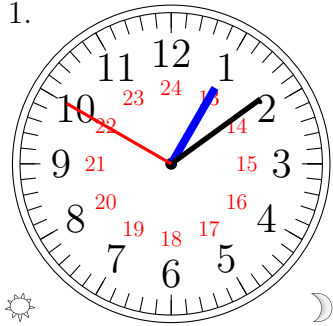


20:03:35

# Sketching Analog Clocks (J) Answers

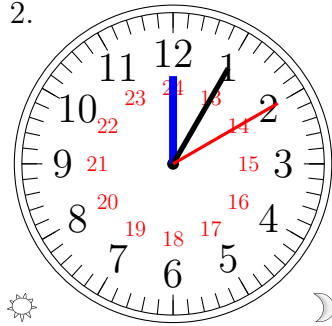
Sketch each time on the clock face above it.

1.



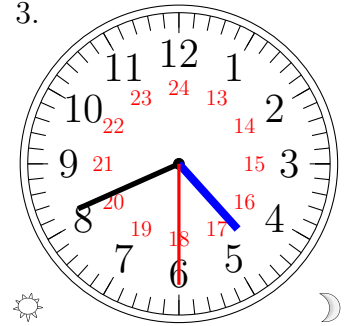
13:09:50

2.



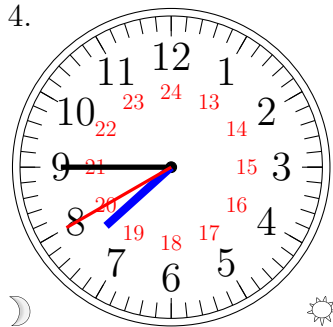
12:05:10

3.



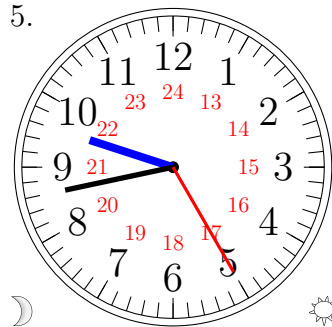
16:41:30

4.



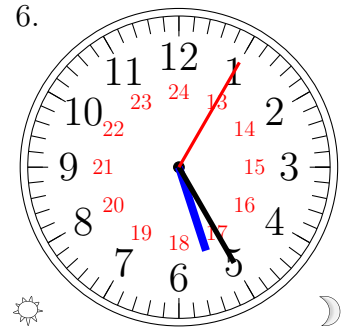
07:45:40

5.



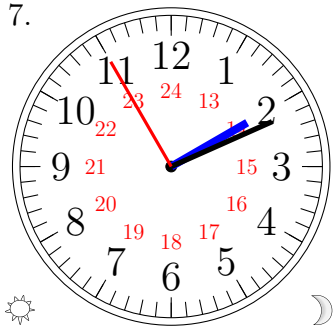
09:43:25

6.



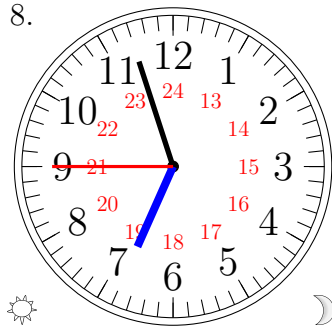
17:25:05

7.



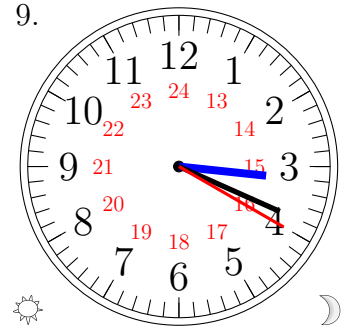
14:11:55

8.



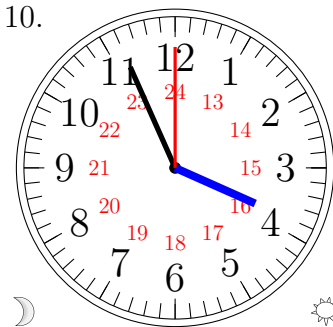
18:57:45

9.



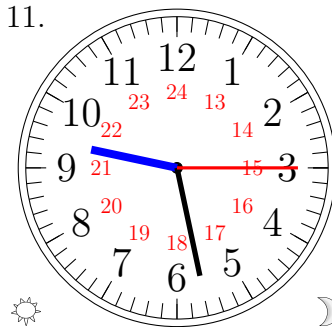
15:19:20

10.



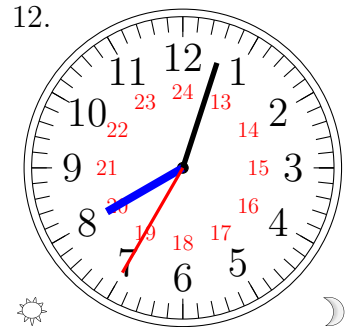
03:56:00

11.



21:28:15

12.



20:03:35