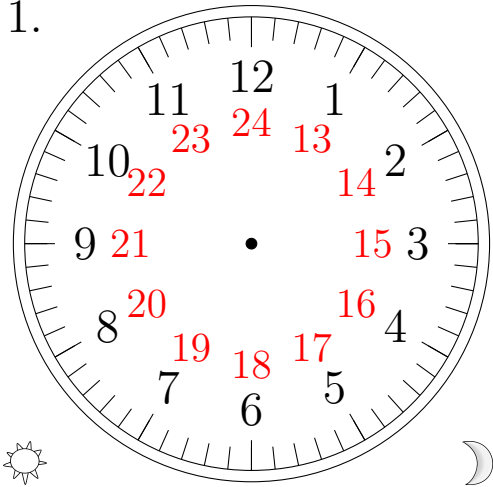


Sketching Analog Clocks (D)

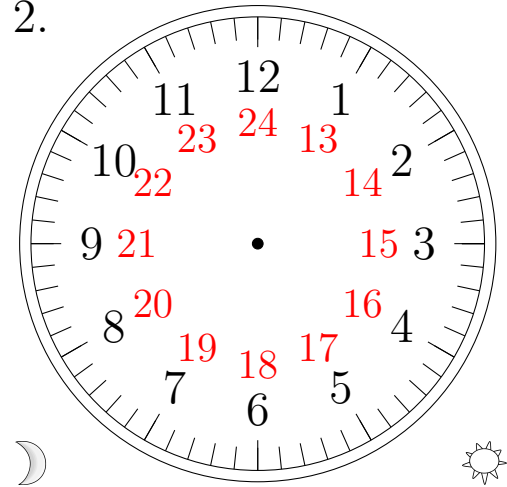
Sketch each time on the clock face above it.

1.



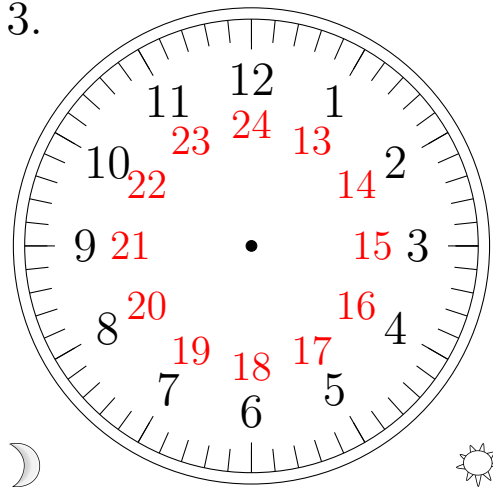
15:14:50

2.



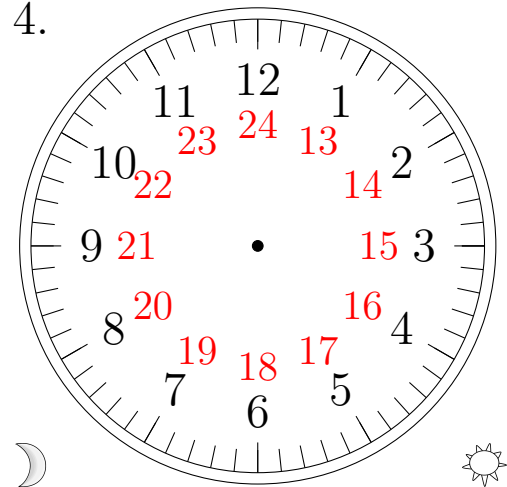
10:43:30

3.



09:38:35

4.

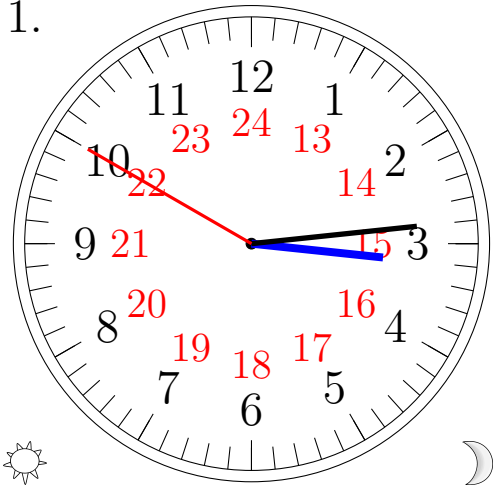


03:18:05

Sketching Analog Clocks (D) Answers

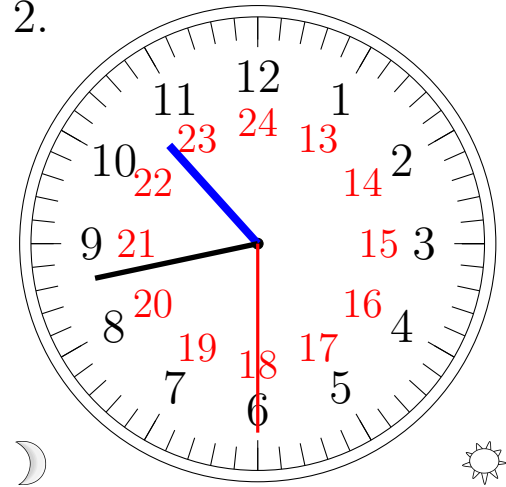
Sketch each time on the clock face above it.

1.



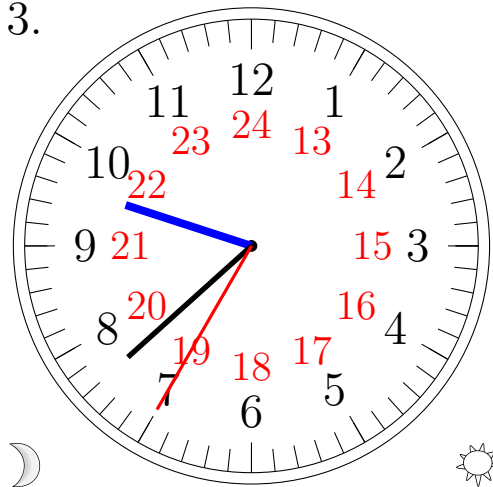
15:14:50

2.



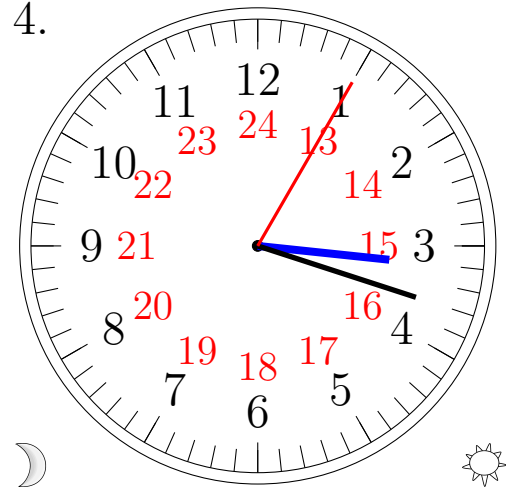
10:43:30

3.



09:38:35

4.



03:18:05