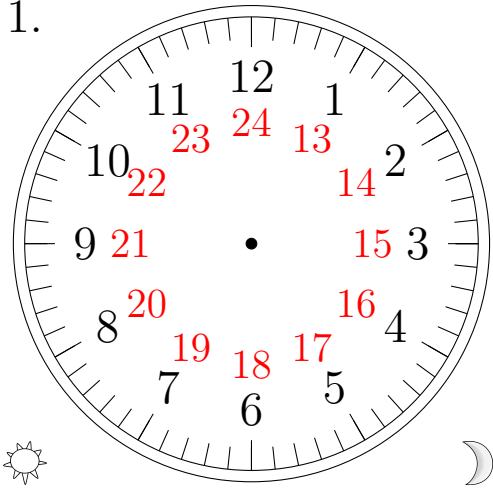


Sketching Analog Clocks (G)

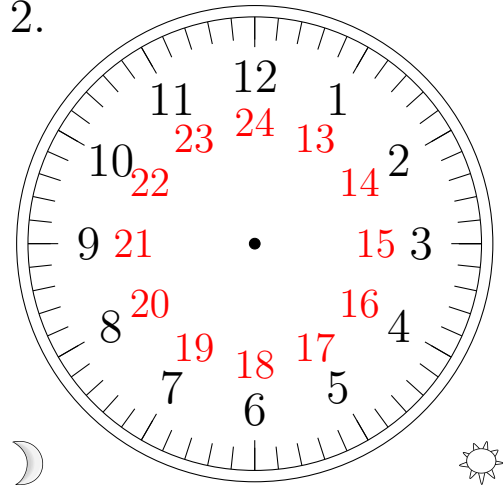
Sketch each time on the clock face above it.

1.



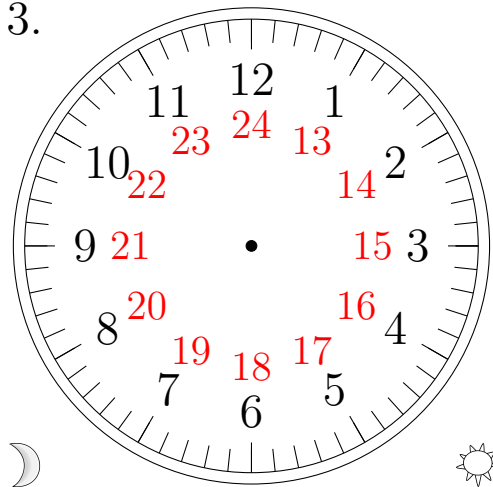
16:44:35

2.



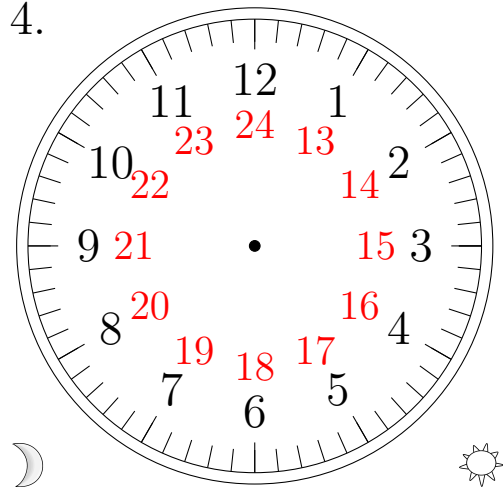
06:22:10

3.



07:12:05

4.

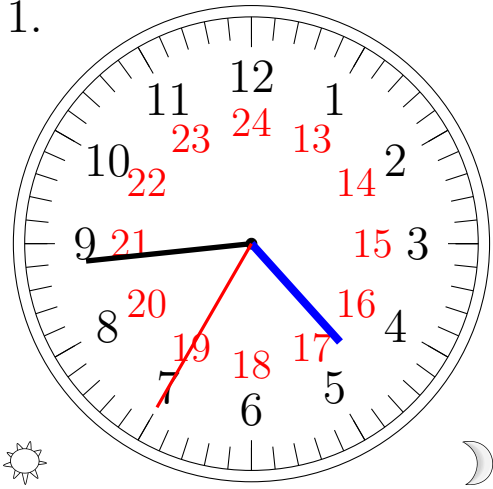


04:17:45

Sketching Analog Clocks (G) Answers

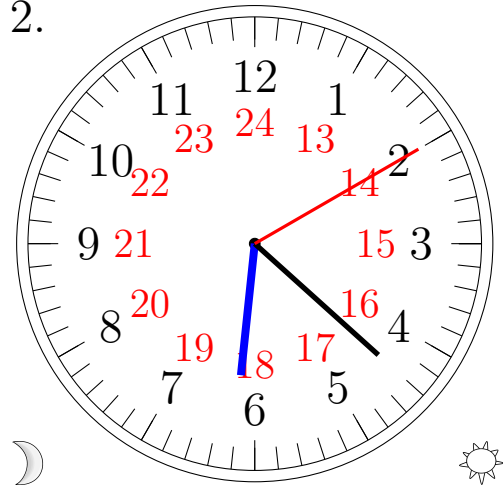
Sketch each time on the clock face above it.

1.



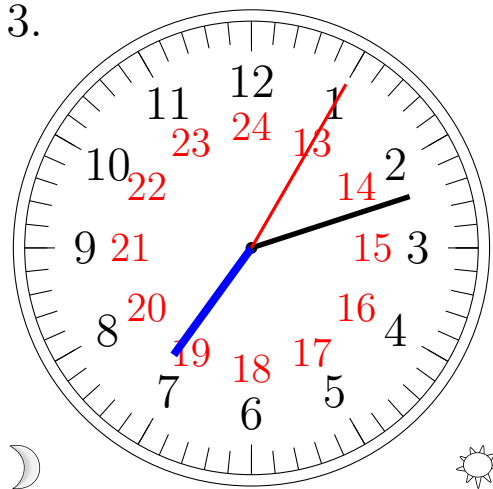
16:44:35

2.



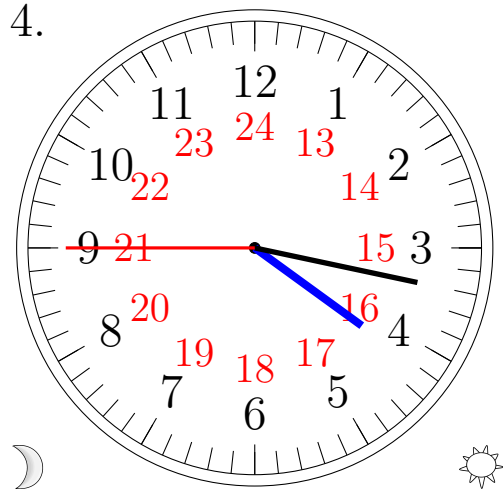
06:22:10

3.



07:12:05

4.



04:17:45