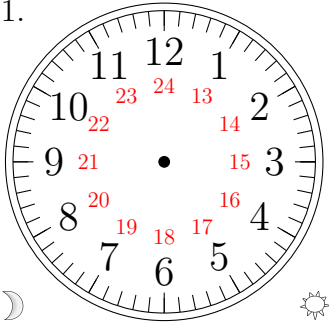


Sketching Analog Clocks (D)

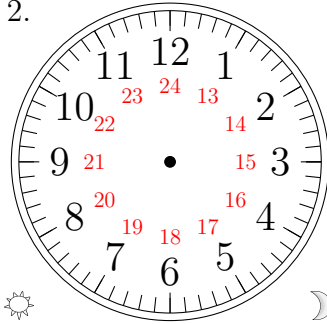
Sketch each time on the clock face above it.

1.



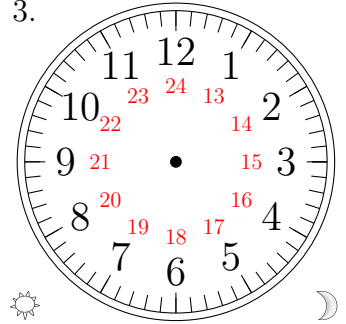
11:48:45

2.



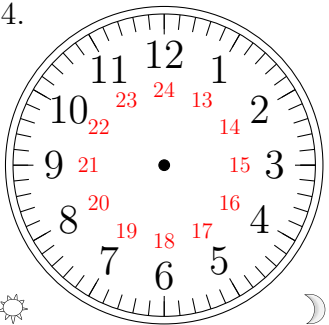
15:29:00

3.



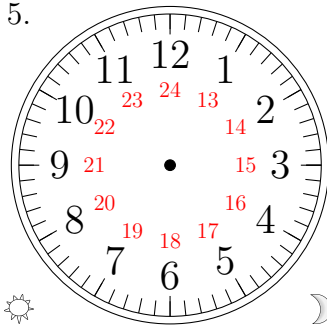
14:25:45

4.



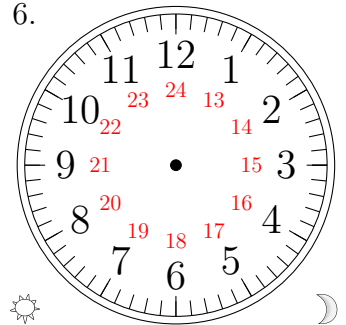
22:18:00

5.



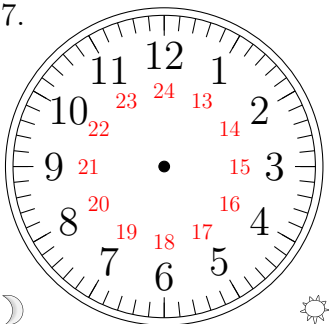
18:54:30

6.



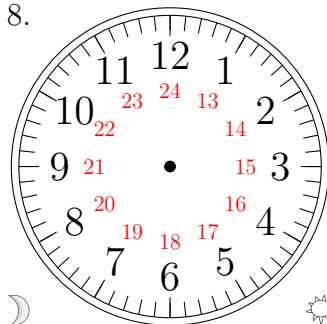
12:22:00

7.



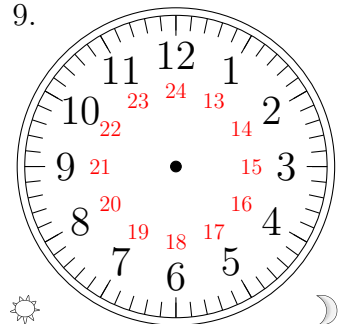
01:03:30

8.



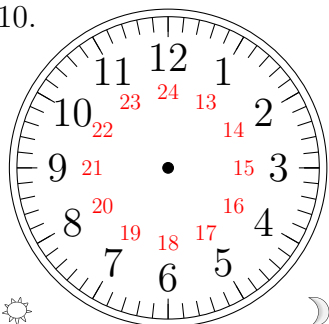
02:19:45

9.



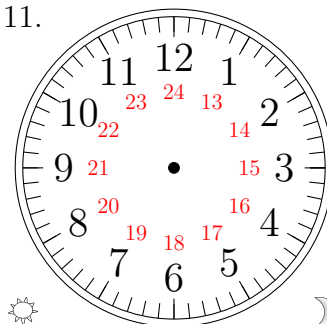
16:43:15

10.



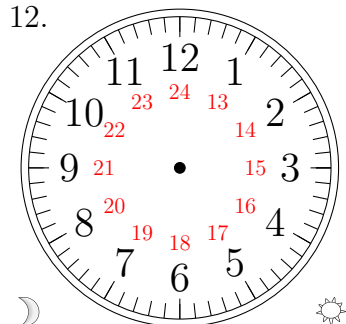
21:37:15

11.



19:02:15

12.

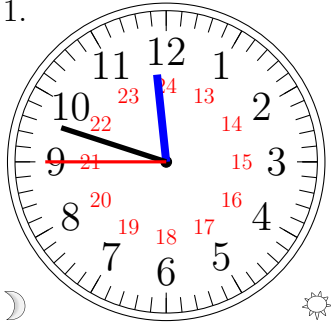


04:40:30

Sketching Analog Clocks (D) Answers

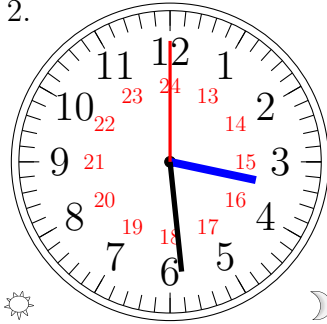
Sketch each time on the clock face above it.

1.



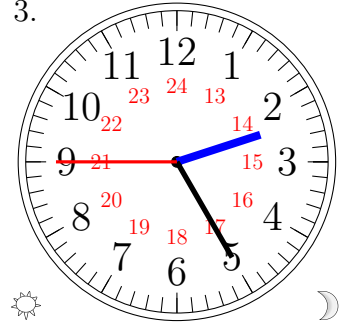
11:48:45

2.



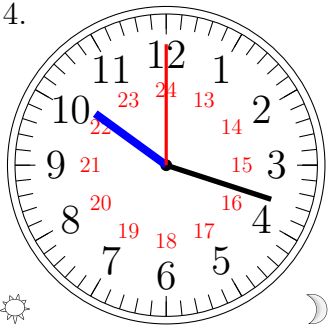
15:29:00

3.



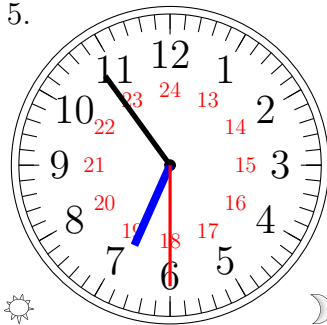
14:25:45

4.



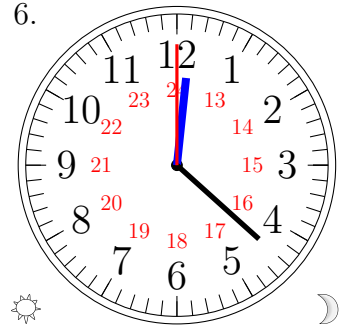
22:18:00

5.



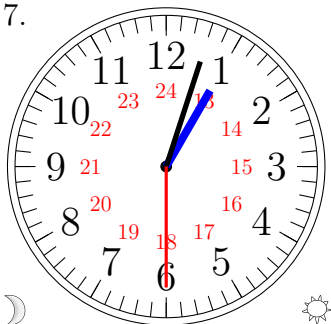
18:54:30

6.



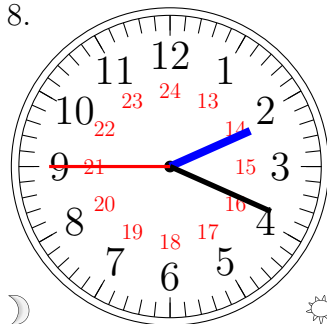
12:22:00

7.



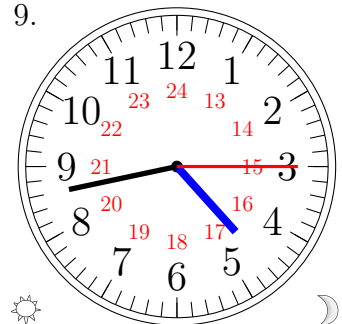
01:03:30

8.



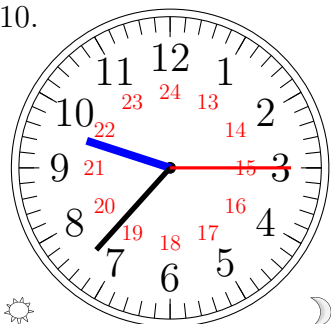
02:19:45

9.



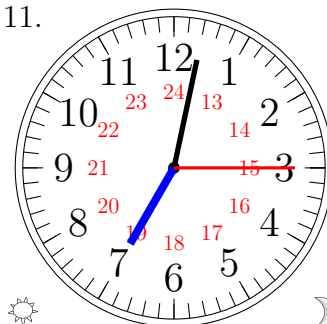
16:43:15

10.



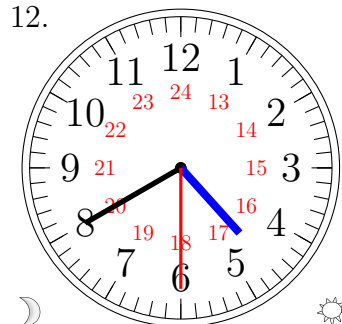
21:37:15

11.



19:02:15

12.



04:40:30