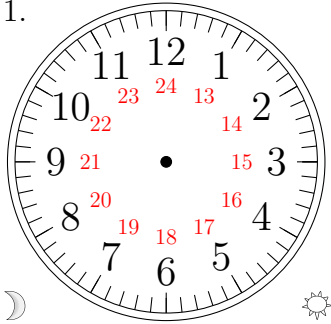


Sketching Analog Clocks (E)

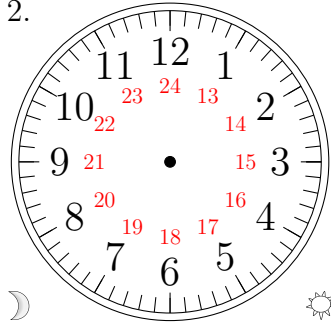
Sketch each time on the clock face above it.

1.



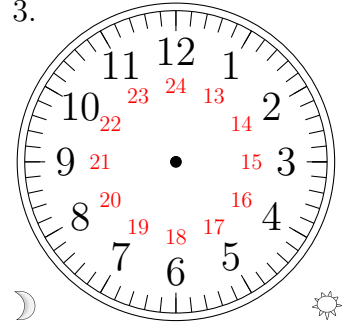
11:32:00

2.



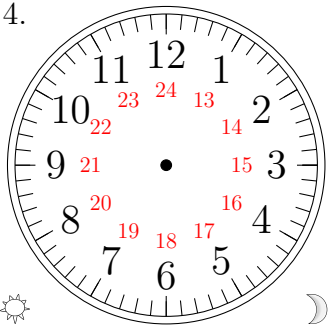
05:21:15

3.



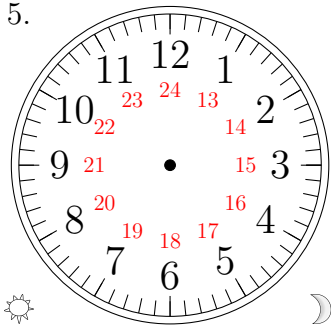
04:26:45

4.



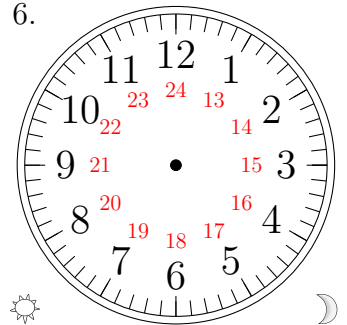
17:44:15

5.



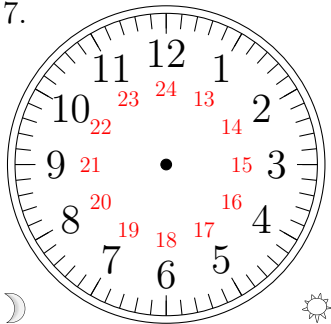
21:59:00

6.



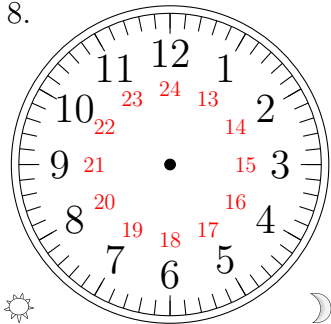
19:28:00

7.



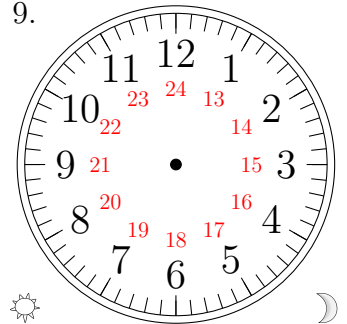
00:20:45

8.



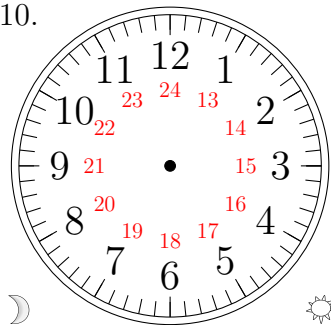
14:41:30

9.



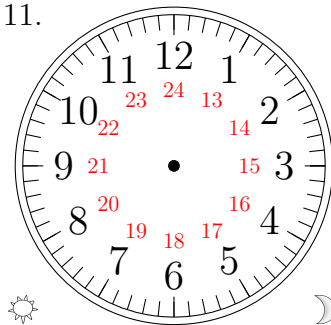
22:43:30

10.



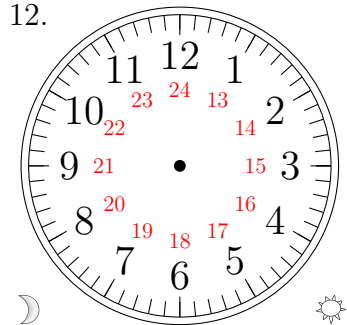
03:06:30

11.



18:04:45

12.

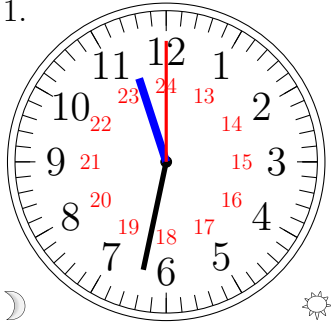


06:46:15

Sketching Analog Clocks (E) Answers

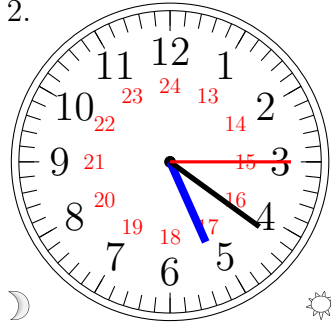
Sketch each time on the clock face above it.

1.



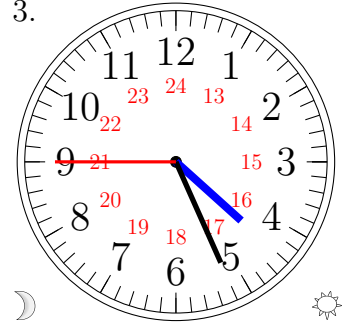
11:32:00

2.



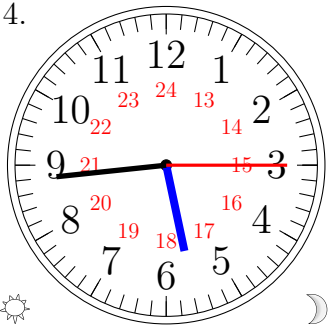
05:21:15

3.



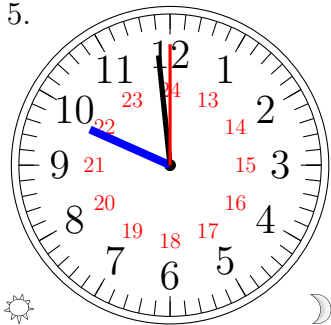
04:26:45

4.



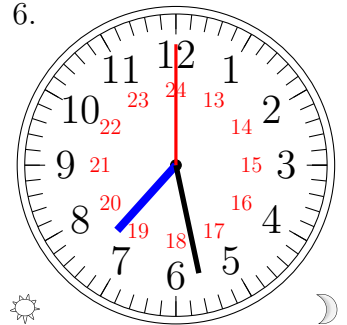
17:44:15

5.



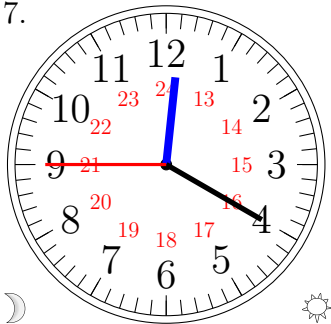
21:59:00

6.



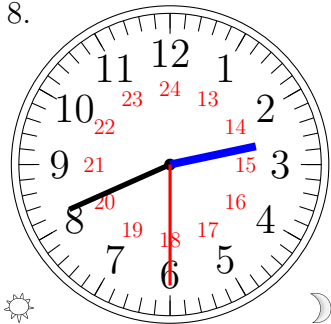
19:28:00

7.



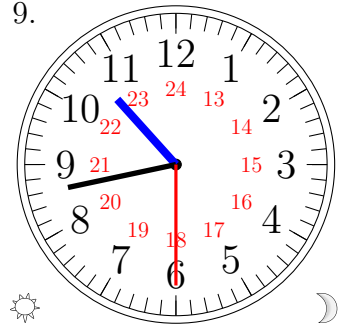
00:20:45

8.



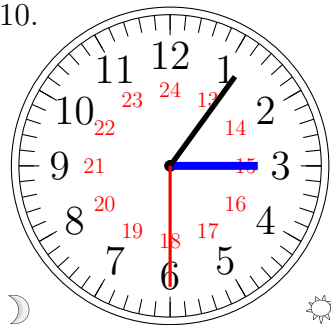
14:41:30

9.



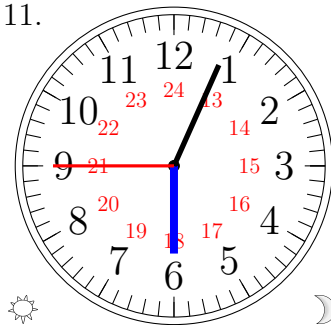
22:43:30

10.



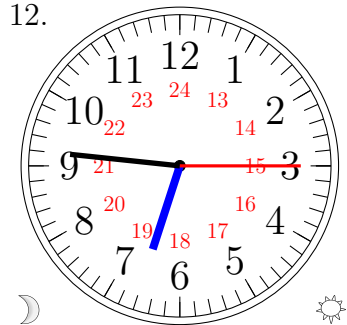
03:06:30

11.



18:04:45

12.



06:46:15