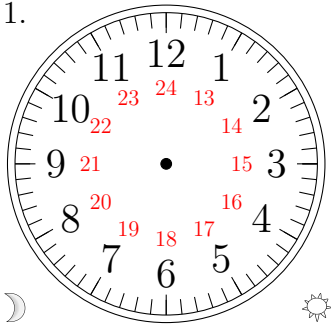


Sketching Analog Clocks (I)

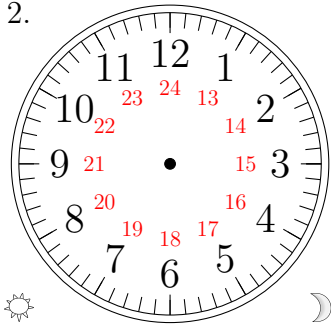
Sketch each time on the clock face above it.

1.



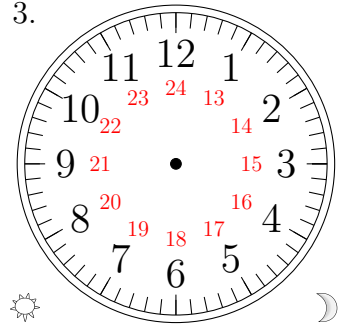
06:08:45

2.



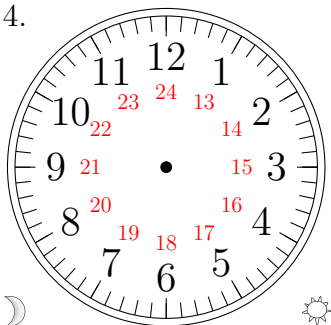
16:33:15

3.



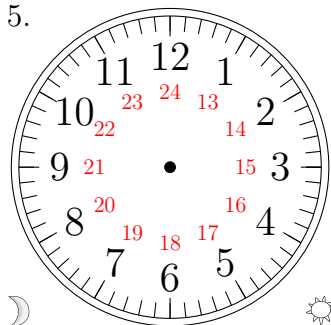
13:09:00

4.



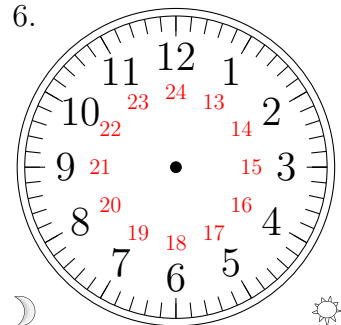
08:45:00

5.



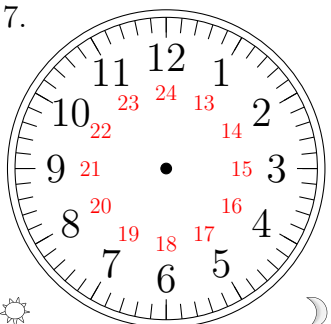
09:55:30

6.



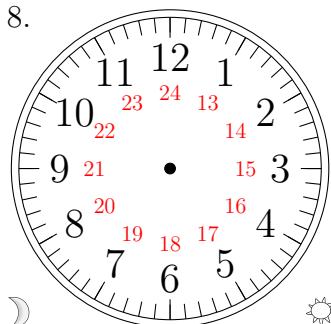
05:59:45

7.



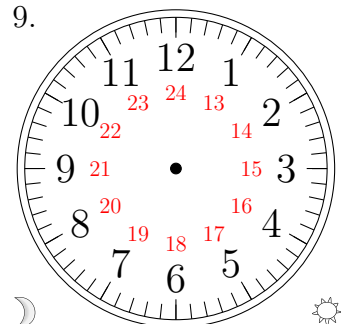
14:56:15

8.



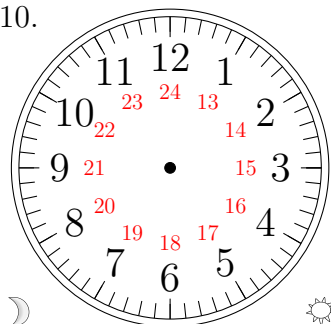
01:53:00

9.



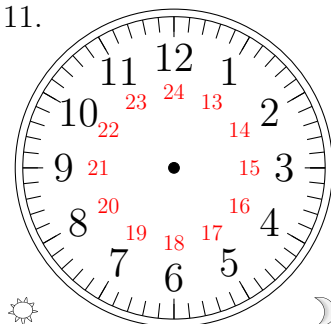
10:47:30

10.



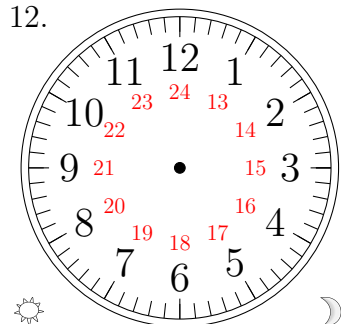
02:05:30

11.



15:57:45

12.

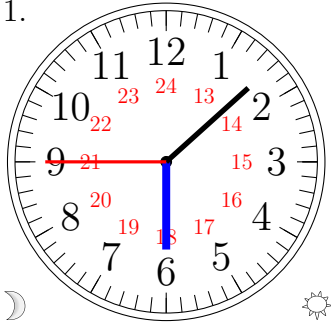


20:27:15

Sketching Analog Clocks (I) Answers

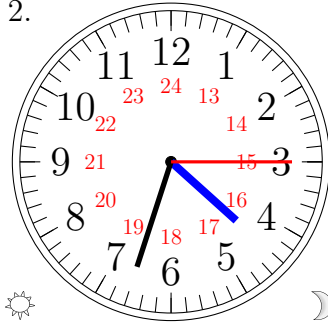
Sketch each time on the clock face above it.

1.



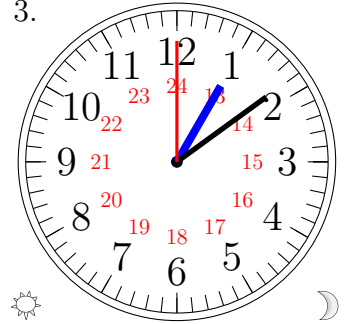
06:08:45

2.



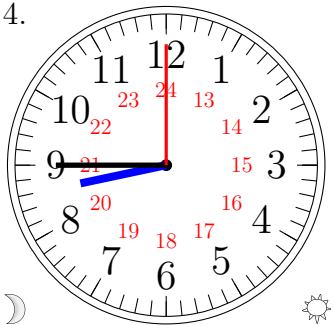
16:33:15

3.



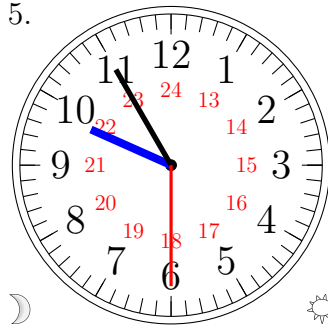
13:09:00

4.



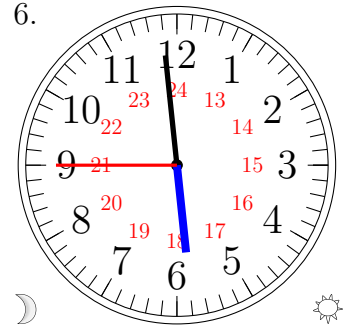
08:45:00

5.



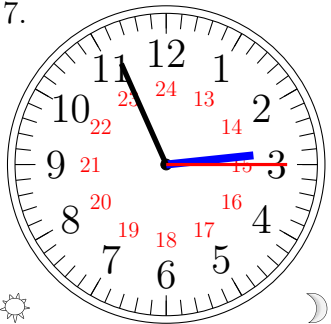
09:55:30

6.



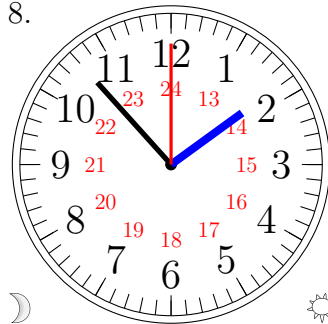
05:59:45

7.



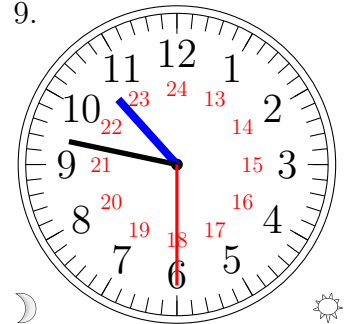
14:56:15

8.



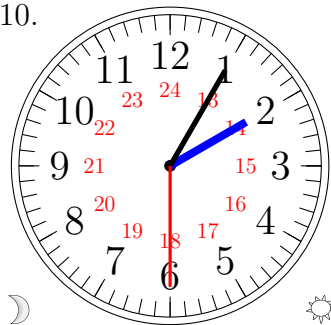
01:53:00

9.



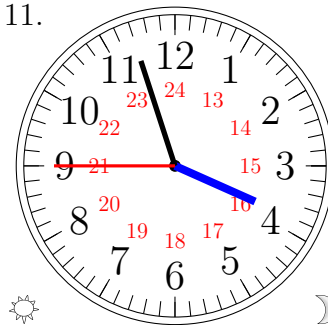
10:47:30

10.



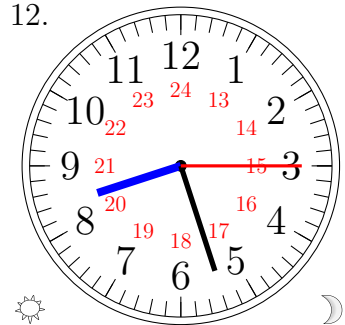
02:05:30

11.



15:57:45

12.



20:27:15