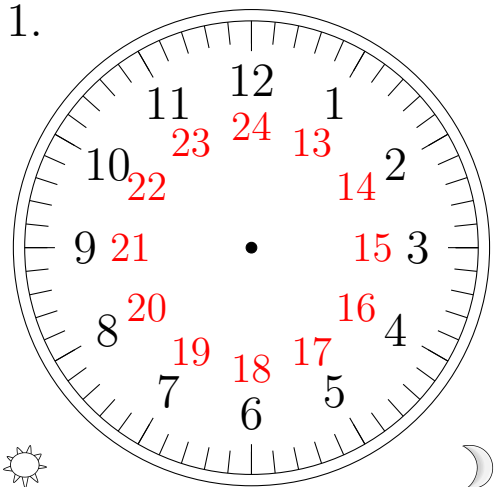


# Sketching Analog Clocks (F)

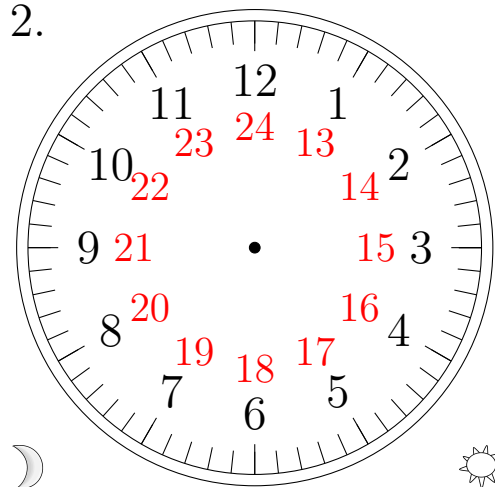
Sketch each time on the clock face above it.

1.



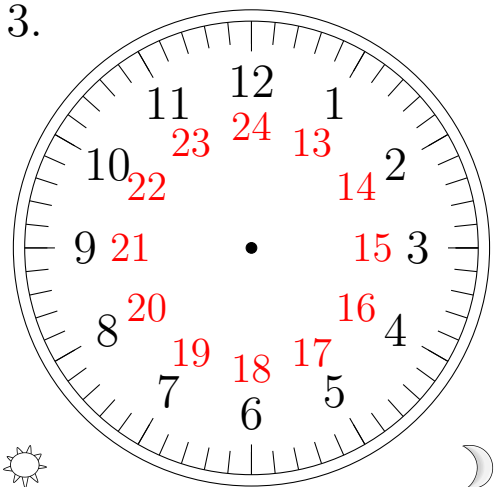
16:16:00

2.



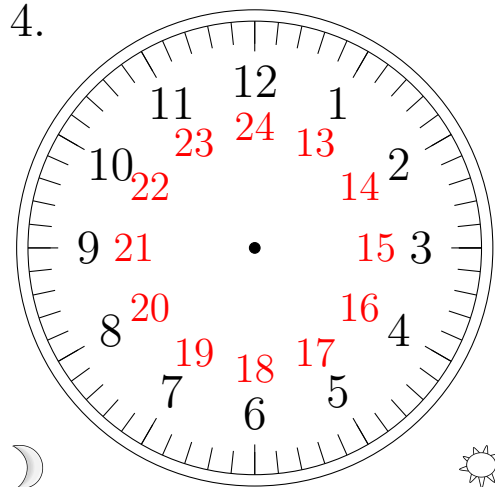
07:46:45

3.



14:39:15

4.

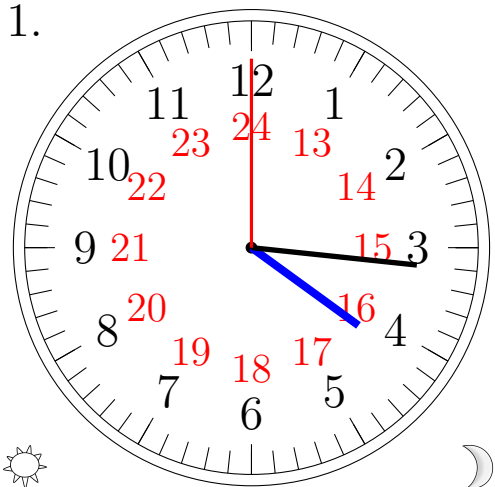


04:30:30

# Sketching Analog Clocks (F) Answers

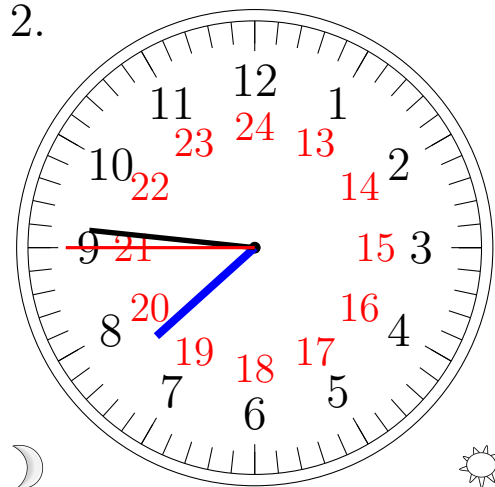
Sketch each time on the clock face above it.

1.



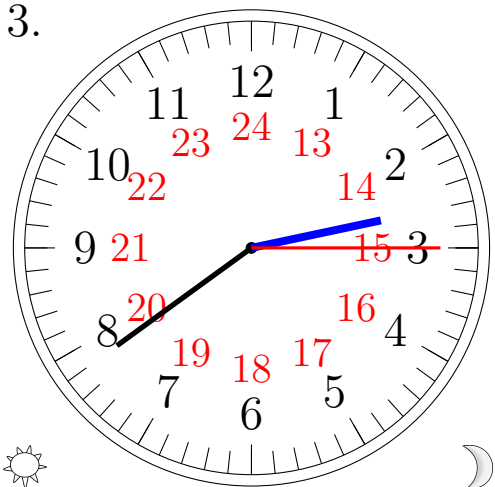
16:16:00

2.



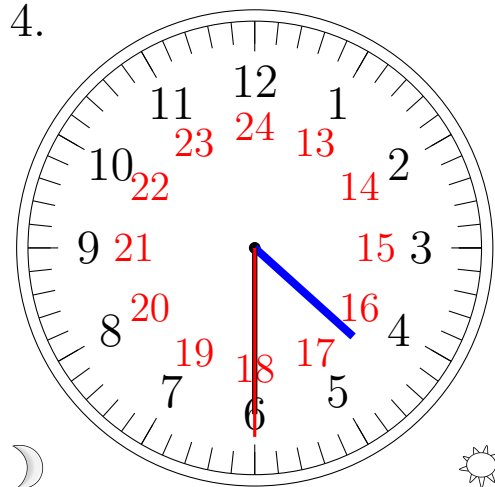
07:46:45

3.



14:39:15

4.



04:30:30