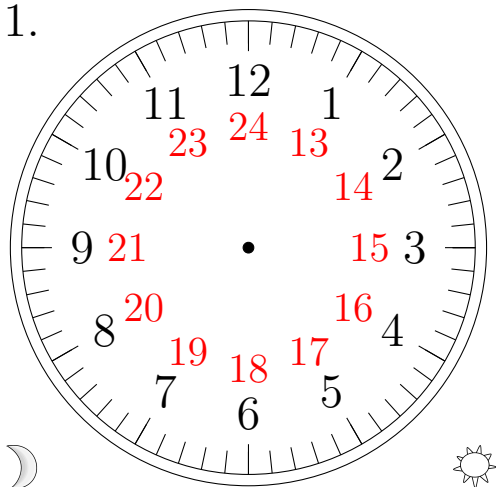


# Sketching Analog Clocks (I)

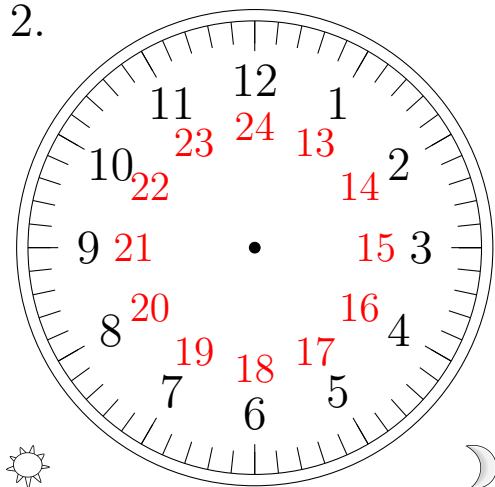
Sketch each time on the clock face above it.

1.



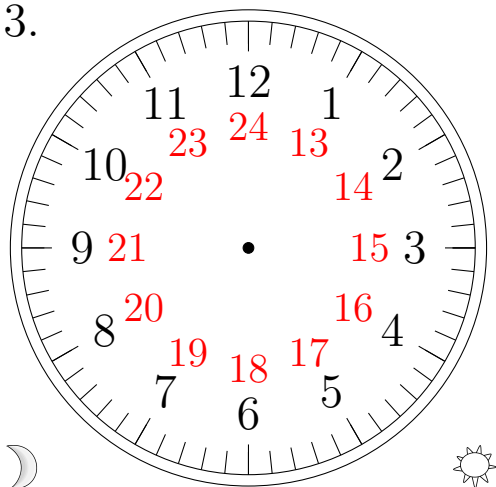
07:57:45

2.



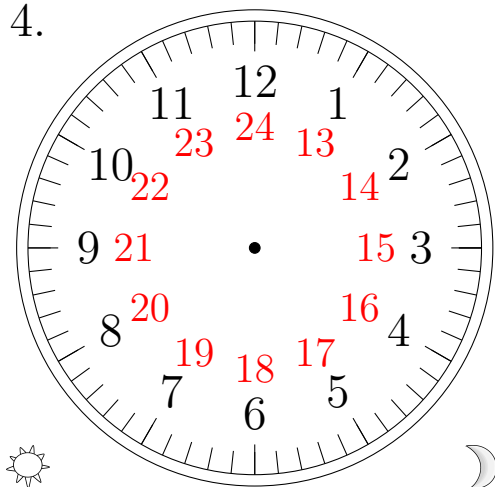
23:59:30

3.



01:19:15

4.

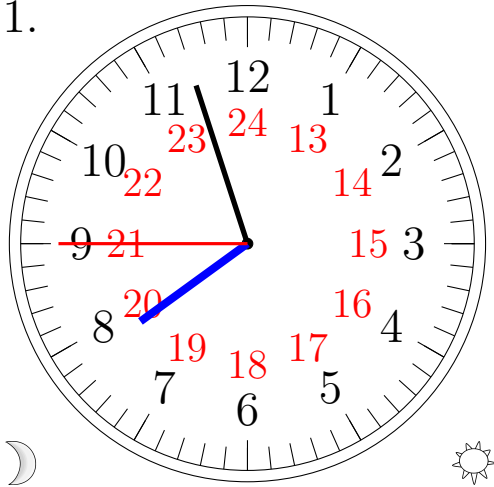


20:44:00

# Sketching Analog Clocks (I) Answers

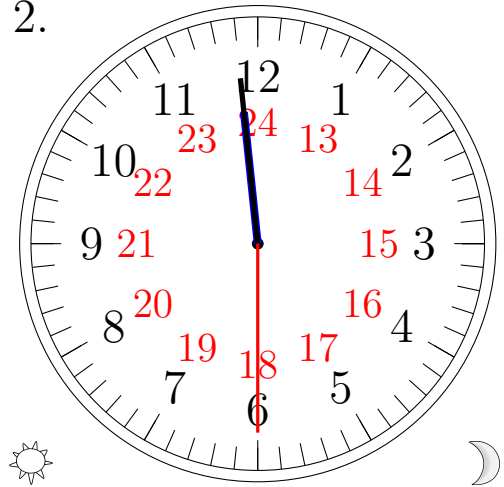
Sketch each time on the clock face above it.

1.



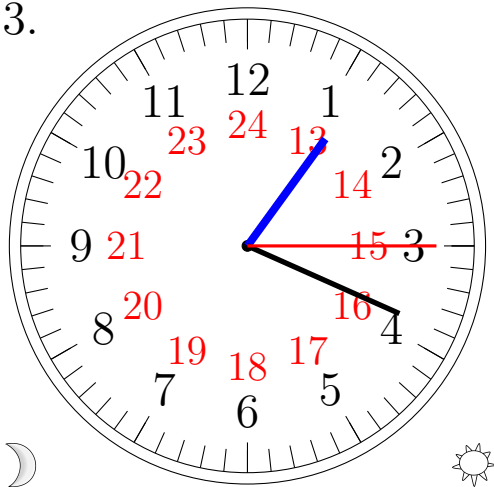
07:57:45

2.



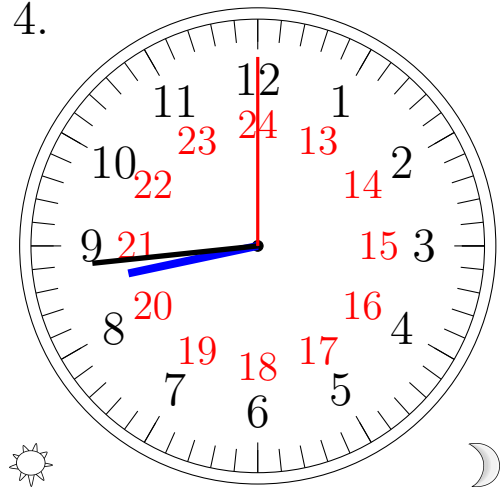
23:59:30

3.



01:19:15

4.



20:44:00