

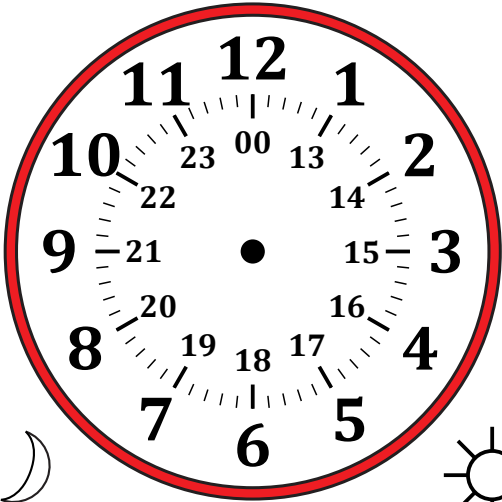
Sketching Time on Analog Clocks (A)

Name: _____

Date: _____

Sketch each time on the clock face above it.

1.



Midnight

Noon

06:28:00

Detailed description: A circular analog clock face with a red border. The outer ring is marked with numbers 1 through 12. The inner ring is marked with numbers 13 through 23, with 00 at the 12 o'clock position. The clock face is divided into 60-minute increments by small tick marks. A crescent moon icon is on the left and a sun icon is on the right. The time 06:28:00 is written below the clock.

2.



Noon

Midnight

23:46:30

Detailed description: A circular analog clock face with a red border. The outer ring is marked with numbers 1 through 12. The inner ring is marked with numbers 13 through 23, with 00 at the 12 o'clock position. The clock face is divided into 60-minute increments by small tick marks. A sun icon is on the left and a crescent moon icon is on the right. The time 23:46:30 is written below the clock.

3.



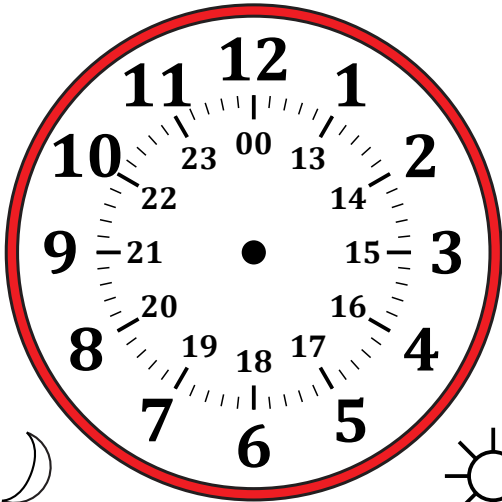
Noon

Midnight

17:15:30

Detailed description: A circular analog clock face with a red border. The outer ring is marked with numbers 1 through 12. The inner ring is marked with numbers 13 through 23, with 00 at the 12 o'clock position. The clock face is divided into 60-minute increments by small tick marks. A sun icon is on the left and a crescent moon icon is on the right. The time 17:15:30 is written below the clock.

4.



Midnight

Noon

01:25:00

Detailed description: A circular analog clock face with a red border. The outer ring is marked with numbers 1 through 12. The inner ring is marked with numbers 13 through 23, with 00 at the 12 o'clock position. The clock face is divided into 60-minute increments by small tick marks. A crescent moon icon is on the left and a sun icon is on the right. The time 01:25:00 is written below the clock.

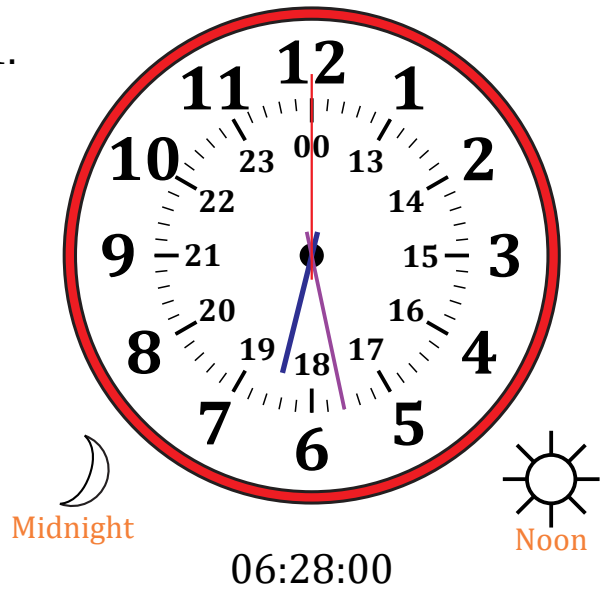
Sketching Time on Analog Clocks (A) Answers

Name: _____

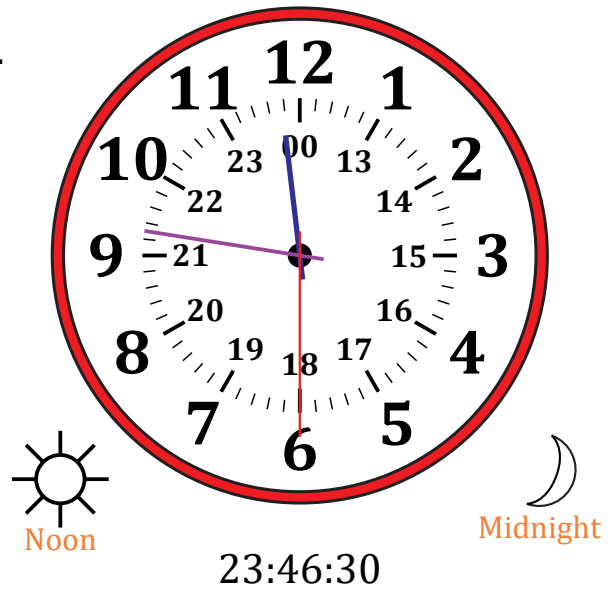
Date: _____

Sketch each time on the clock face above it.

1.



2.



3.



4.

