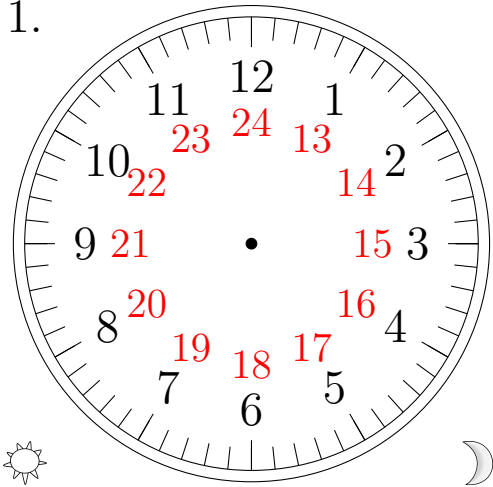


Sketching Analog Clocks (G)

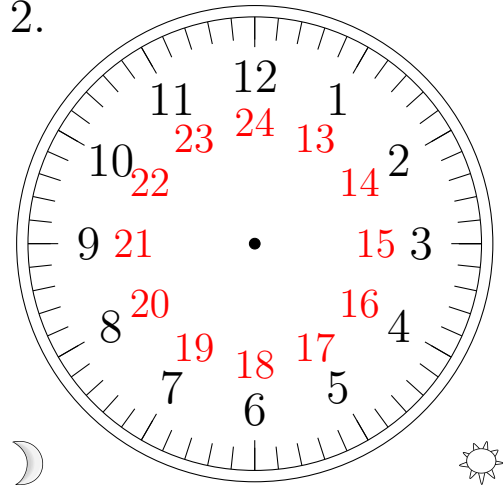
Sketch each time on the clock face above it.

1.



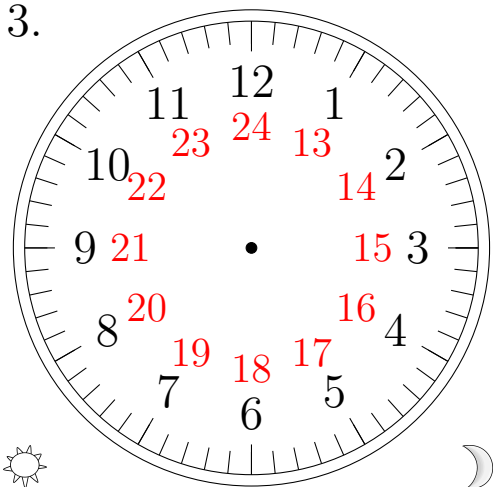
17:40:30

2.



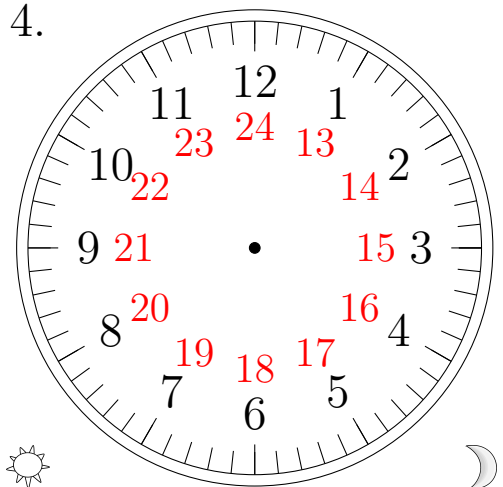
08:35:30

3.



22:53:00

4.

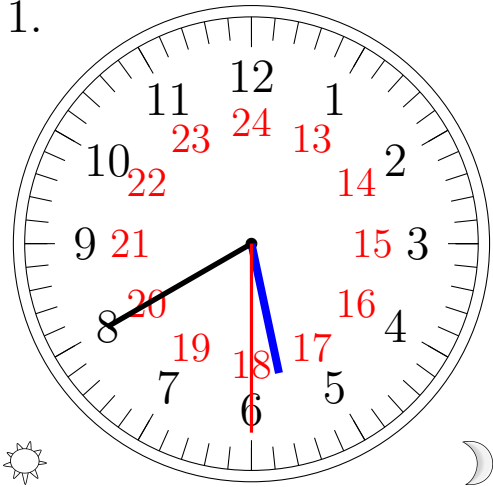


18:59:00

Sketching Analog Clocks (G) Answers

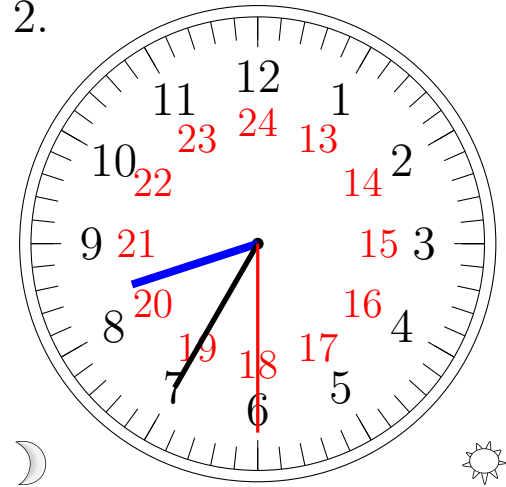
Sketch each time on the clock face above it.

1.



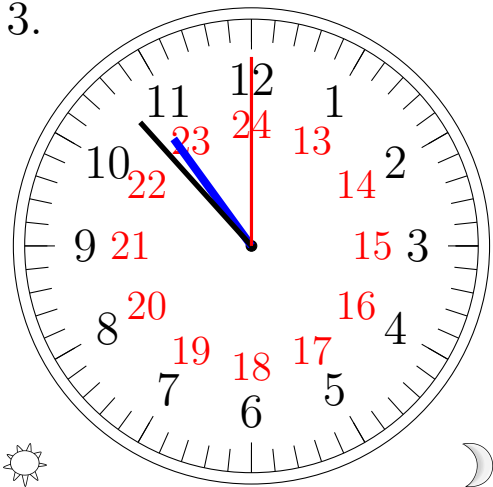
17:40:30

2.



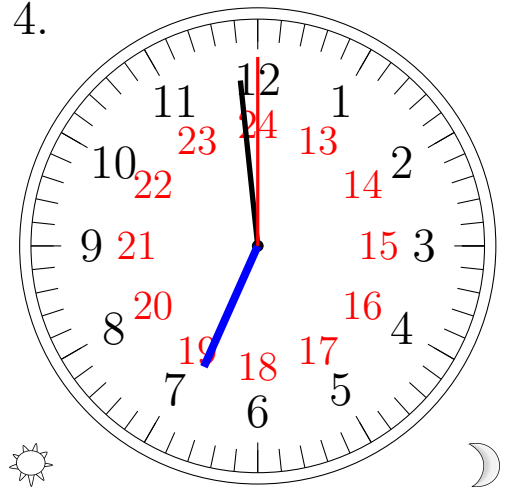
08:35:30

3.



22:53:00

4.



18:59:00