

Sketching Analog Clocks (A)

Sketch each time on the clock face above it.

1.



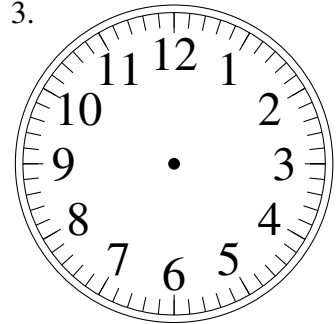
4:45

2.



4:58

3.



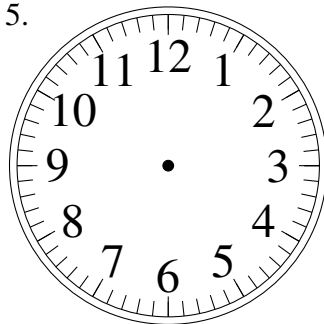
1:26

4.



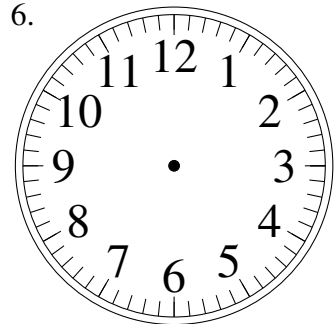
5:00

5.



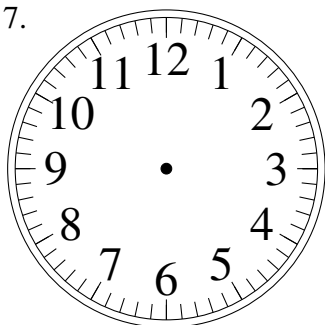
10:01

6.



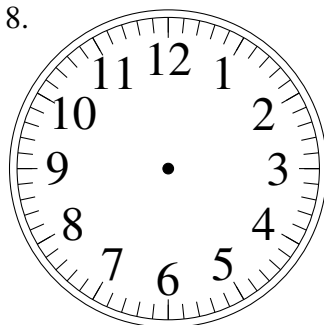
12:42

7.



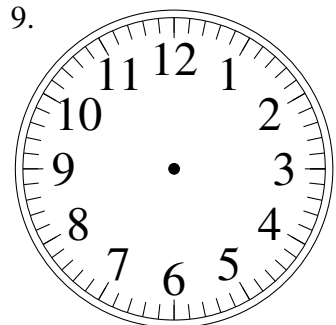
3:44

8.



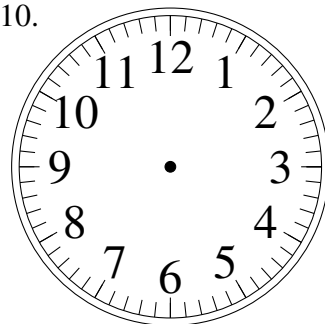
9:29

9.



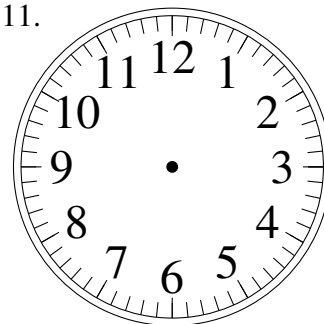
6:13

10.



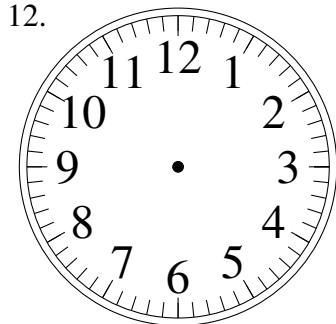
1:39

11.



12:16

12.

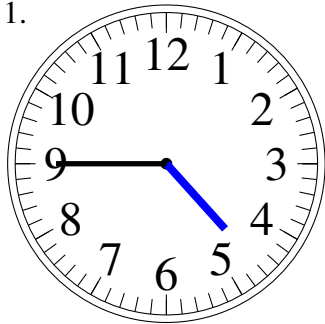


8:26

Sketching Analog Clocks (A) Answers

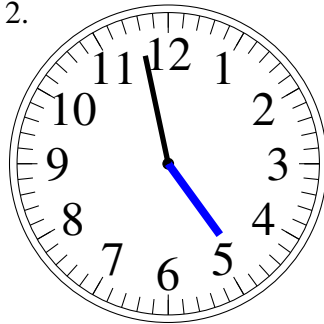
Sketch each time on the clock face above it.

1.



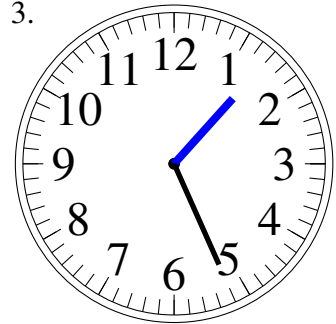
4:45

2.



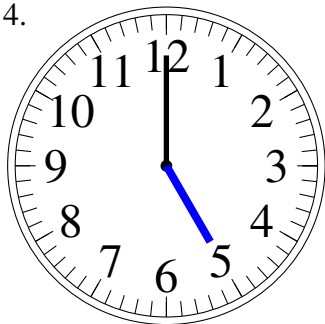
4:58

3.



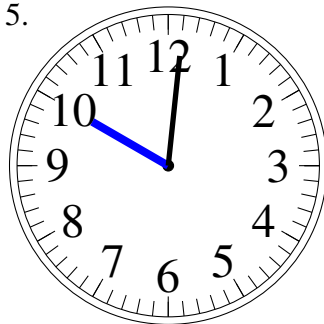
1:26

4.



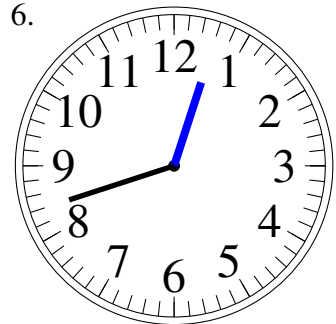
5:00

5.



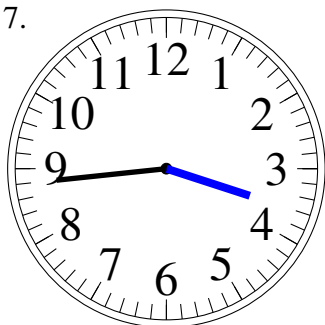
10:01

6.



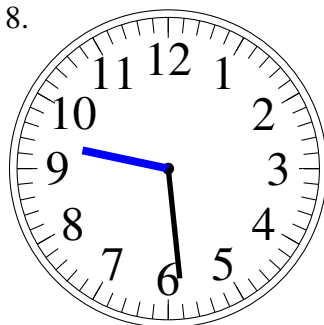
12:42

7.



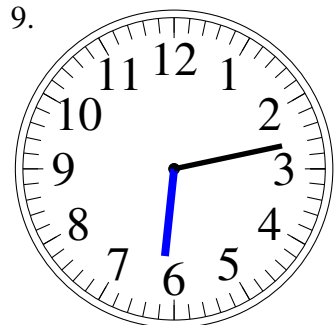
3:44

8.



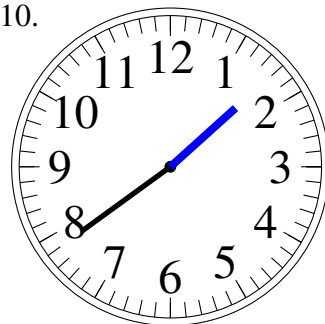
9:29

9.



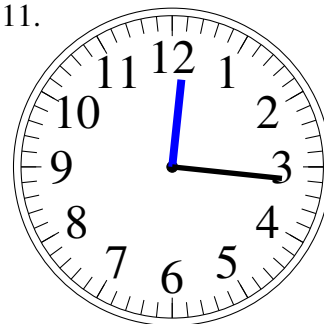
6:13

10.



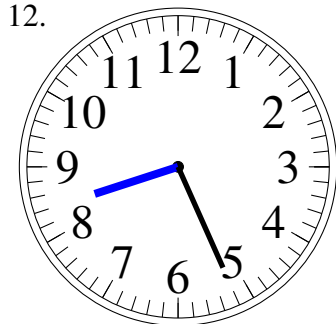
1:39

11.



12:16

12.



8:26