

Sketching Analog Clocks (D)

Sketch each time on the clock face above it.

1.



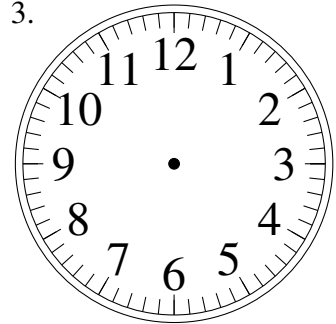
9:03

2.



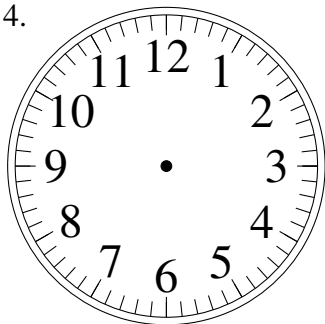
10:08

3.



12:51

4.



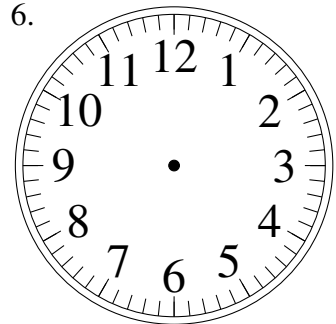
3:56

5.



12:15

6.



7:59

7.



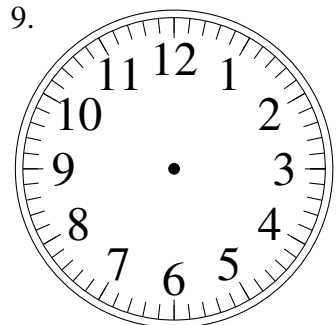
8:45

8.



3:38

9.



6:09

10.



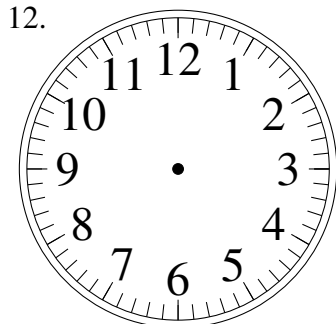
10:16

11.



2:33

12.

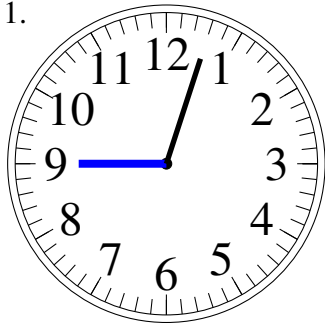


3:52

Sketching Analog Clocks (D) Answers

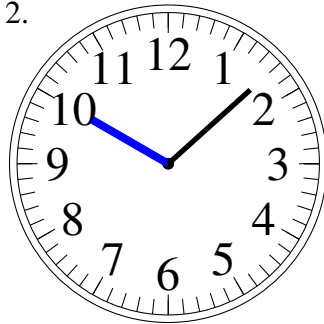
Sketch each time on the clock face above it.

1.



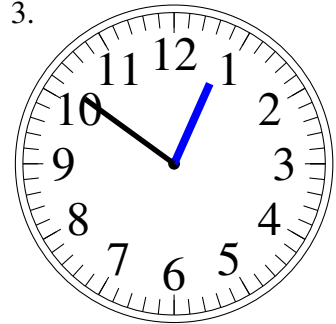
9:03

2.



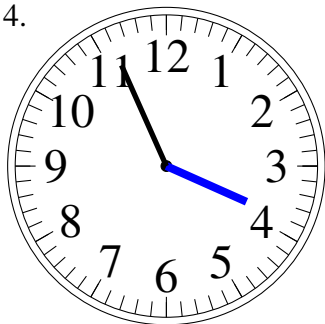
10:08

3.



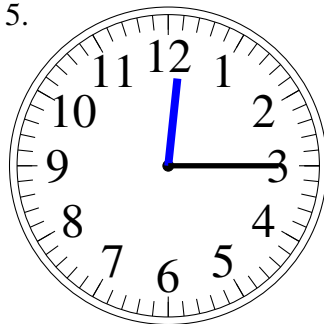
12:51

4.



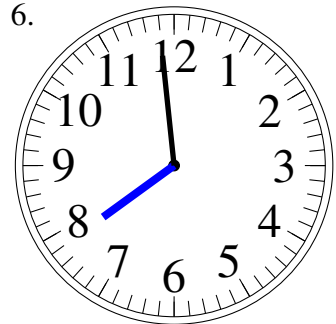
3:56

5.



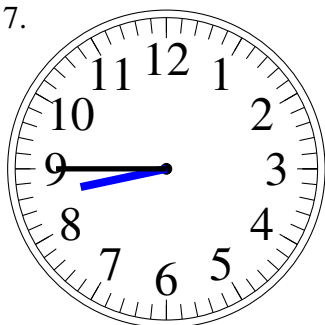
12:15

6.



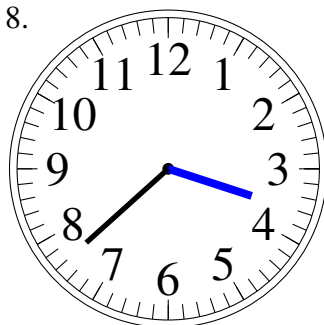
7:59

7.



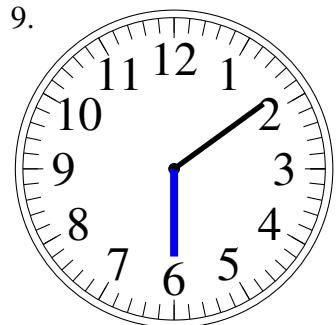
8:45

8.



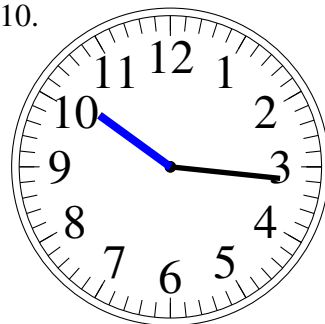
3:38

9.



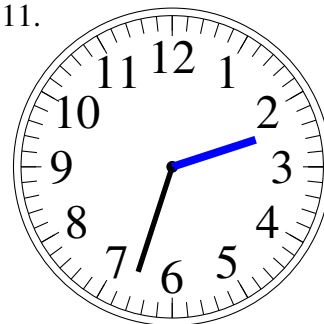
6:09

10.



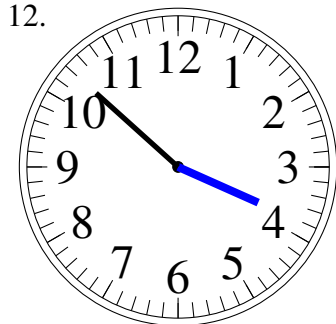
10:16

11.



2:33

12.



3:52