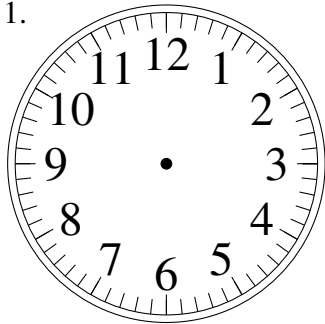


Sketching Analog Clocks (A)

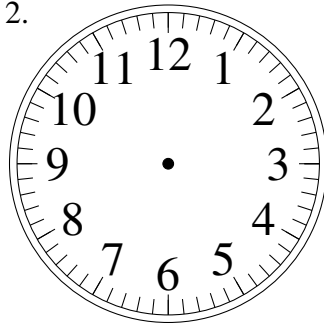
Sketch each time on the clock face above it.

1.



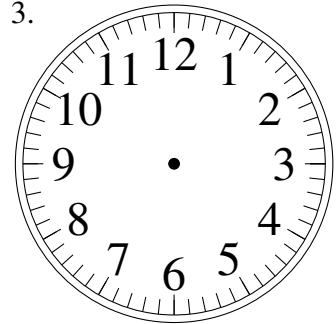
11:05

2.



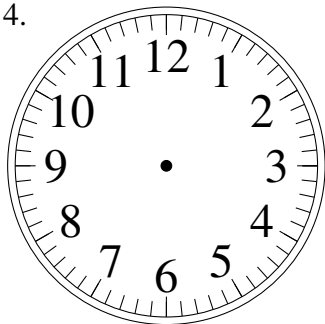
10:10

3.



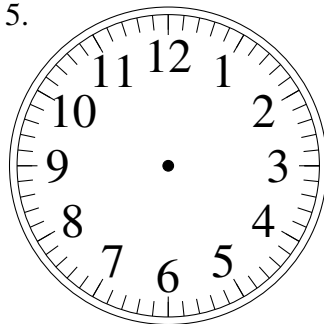
4:35

4.



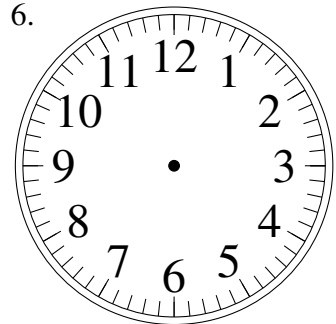
6:20

5.



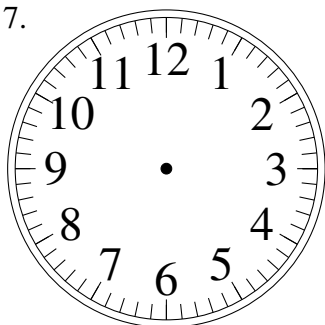
12:20

6.



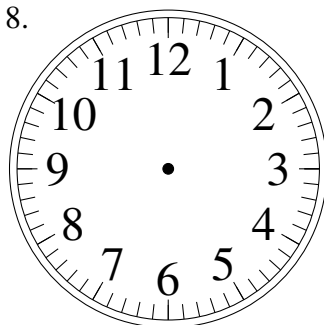
8:05

7.



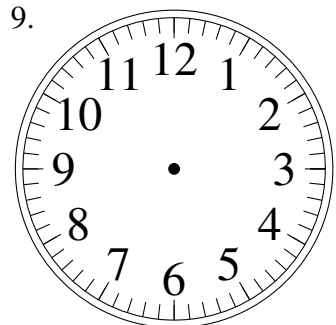
1:55

8.



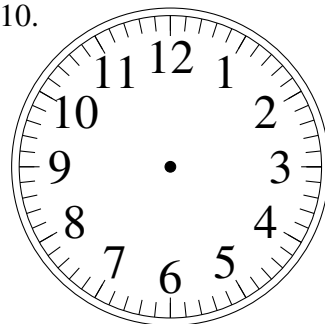
3:15

9.



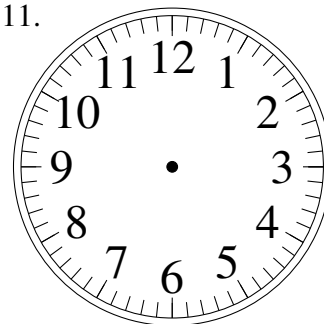
7:40

10.



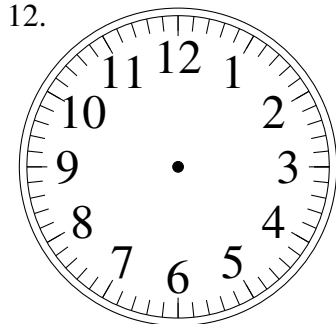
11:35

11.



5:45

12.

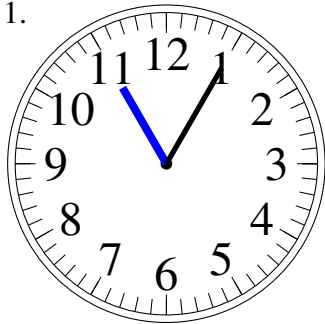


6:05

Sketching Analog Clocks (A) Answers

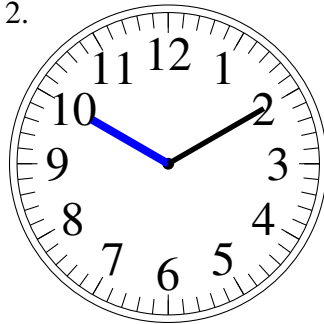
Sketch each time on the clock face above it.

1.



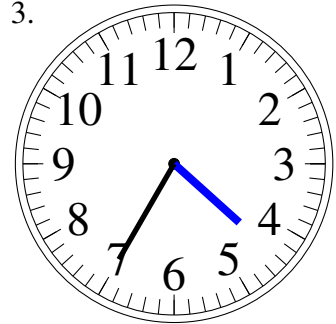
11:05

2.



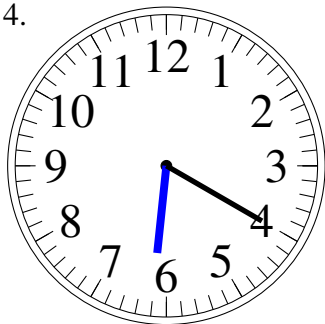
10:10

3.



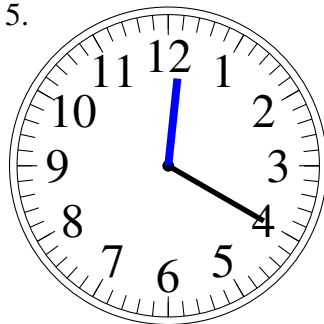
4:35

4.



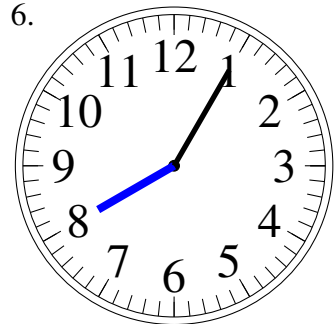
6:20

5.



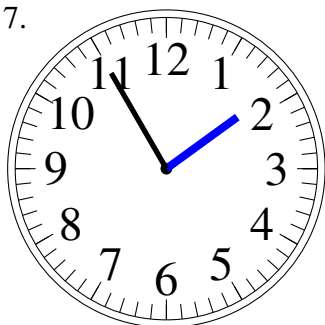
12:20

6.



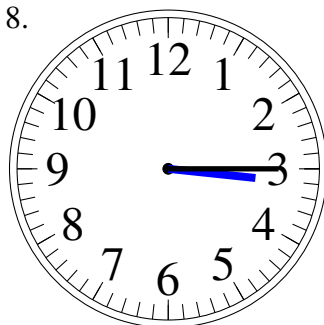
8:05

7.



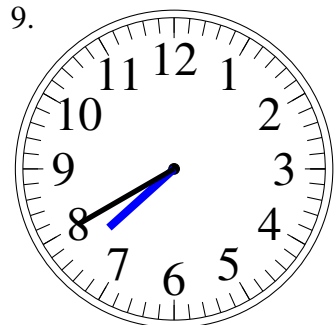
1:55

8.



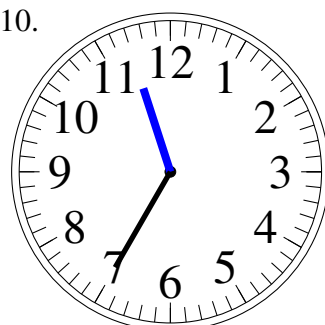
3:15

9.



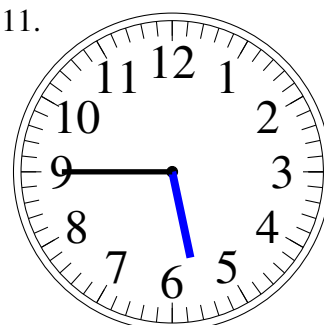
7:40

10.



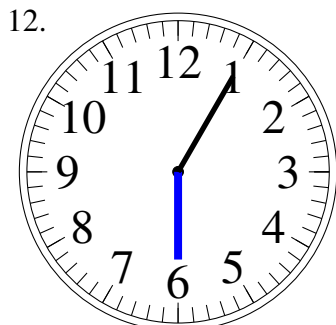
11:35

11.



5:45

12.



6:05