

Sketching Analog Clocks (D)

Sketch each time on the clock face above it.

1.



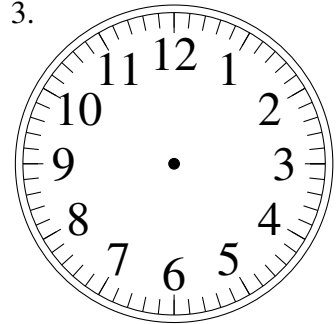
2:15

2.



9:45

3.



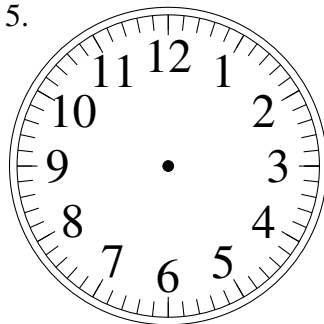
6:05

4.



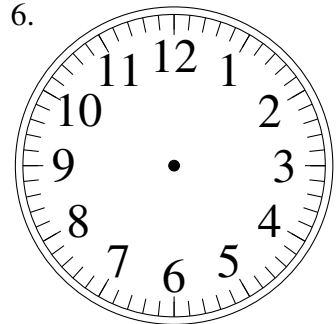
11:10

5.



5:10

6.



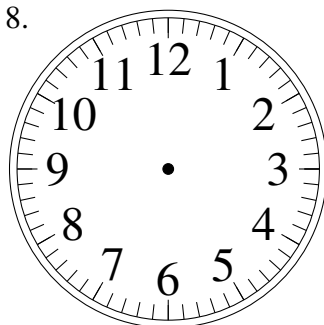
9:05

7.



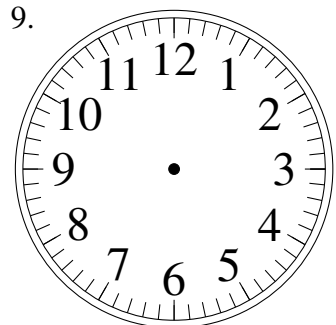
1:00

8.



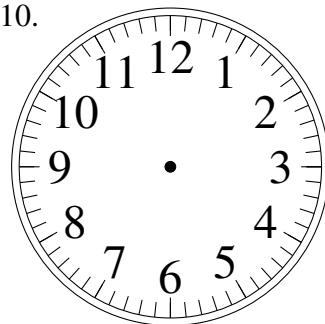
7:55

9.



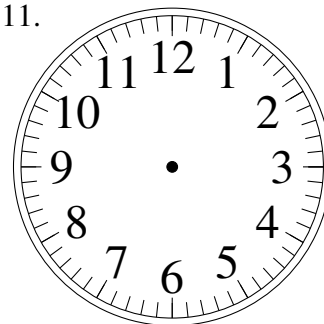
3:50

10.



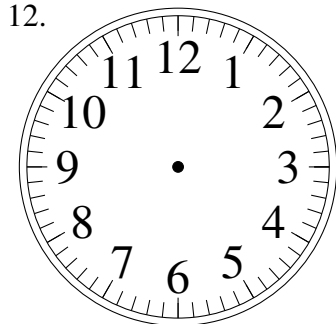
8:35

11.



1:35

12.

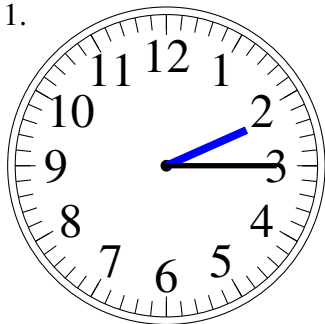


4:25

Sketching Analog Clocks (D) Answers

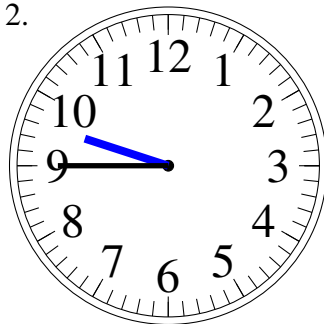
Sketch each time on the clock face above it.

1.



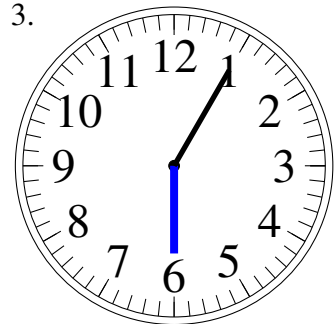
2:15

2.



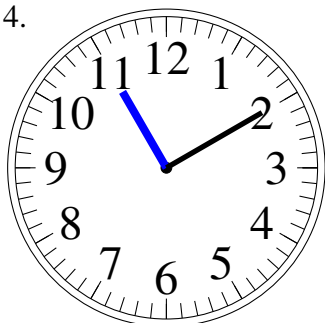
9:45

3.



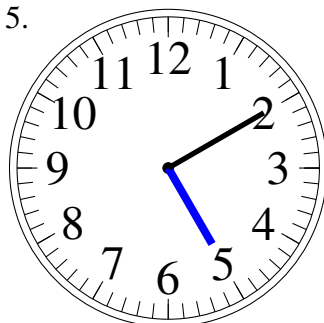
6:05

4.



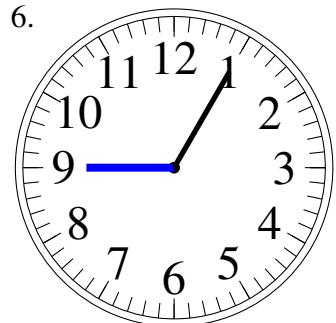
11:10

5.



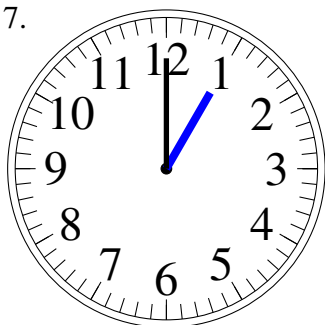
5:10

6.



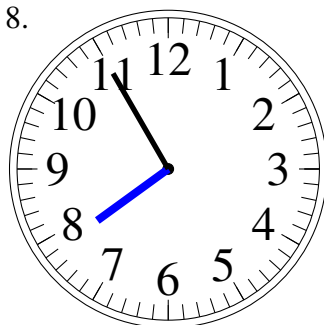
9:05

7.



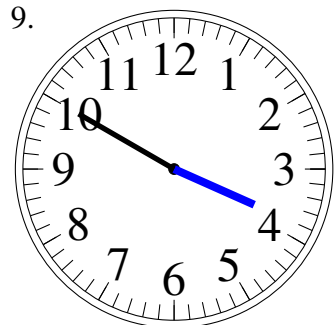
1:00

8.



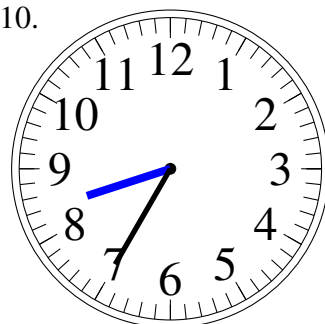
7:55

9.



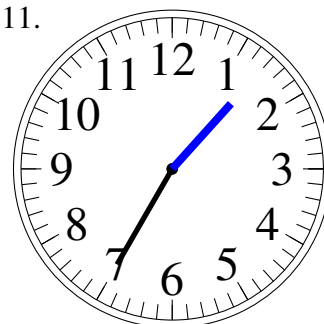
3:50

10.



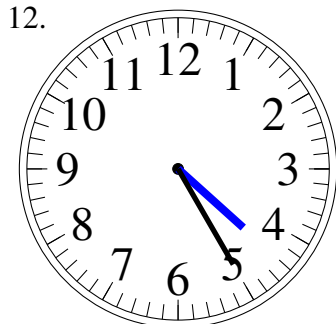
8:35

11.



1:35

12.



4:25