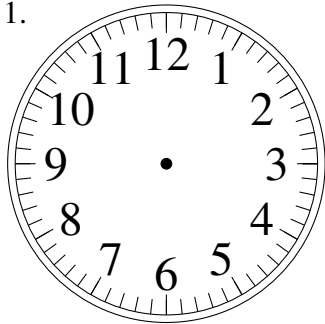


Sketching Analog Clocks (F)

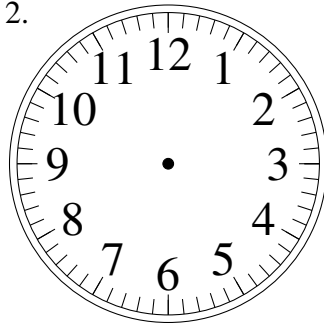
Sketch each time on the clock face above it.

1.



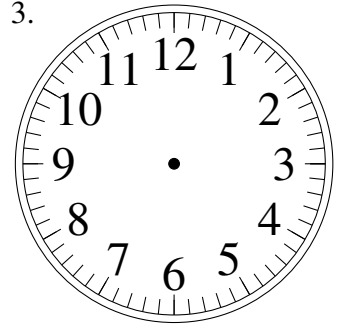
9:50

2.



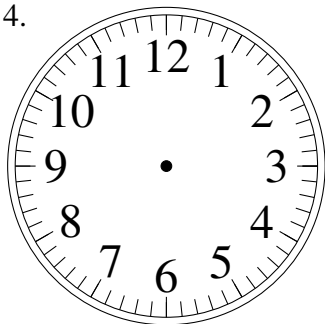
8:30

3.



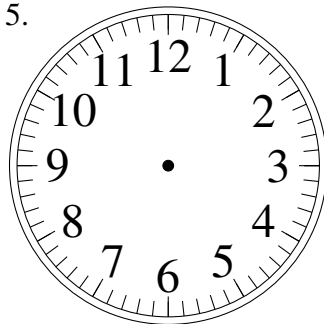
2:35

4.



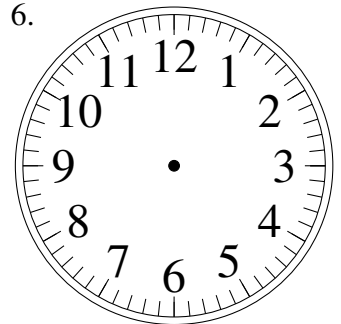
3:35

5.



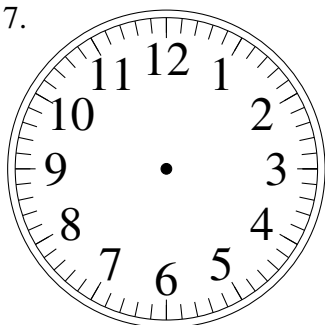
8:00

6.



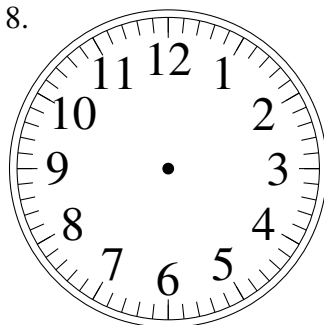
1:15

7.



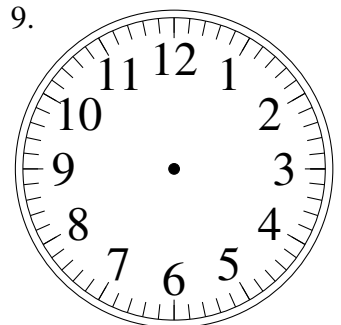
6:30

8.



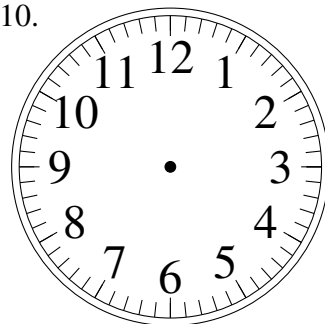
9:45

9.



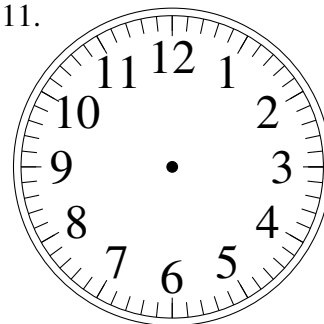
8:35

10.



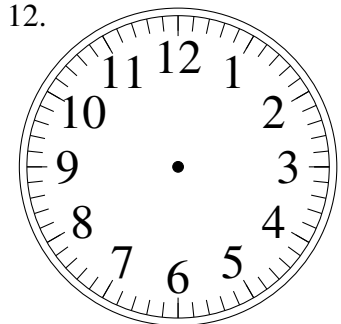
5:25

11.



7:50

12.

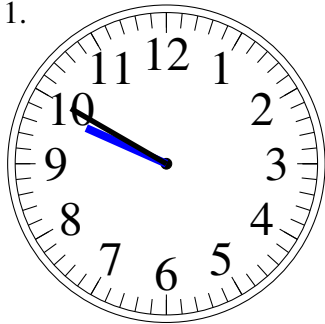


10:35

Sketching Analog Clocks (F) Answers

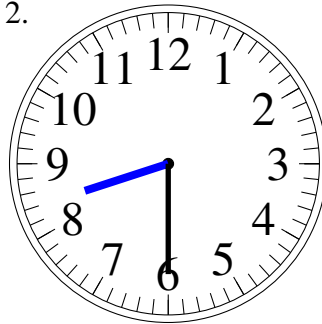
Sketch each time on the clock face above it.

1.



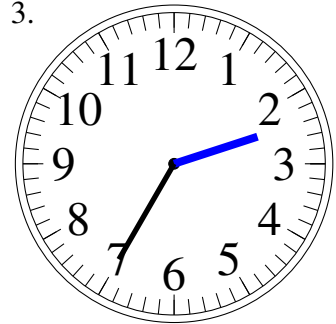
9:50

2.



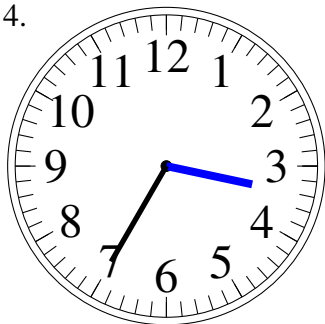
8:30

3.



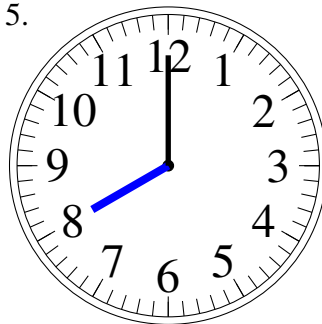
2:35

4.



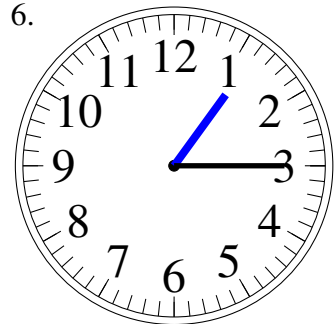
3:35

5.



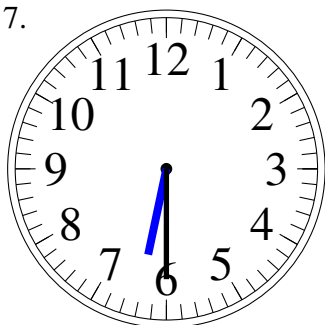
8:00

6.



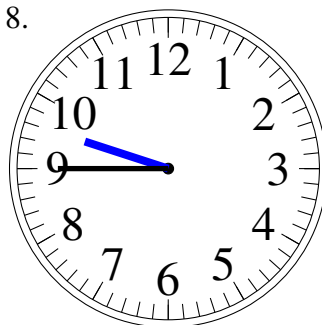
1:15

7.



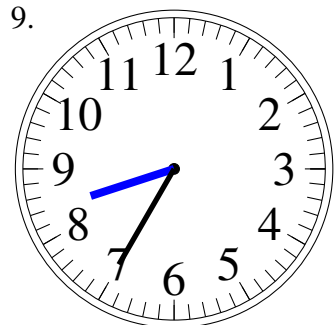
6:30

8.



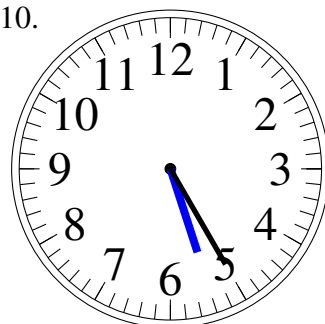
9:45

9.



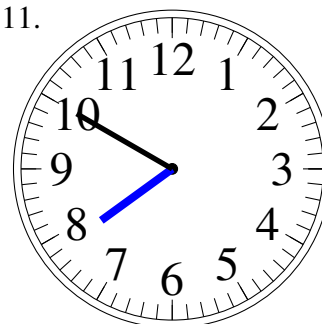
8:35

10.



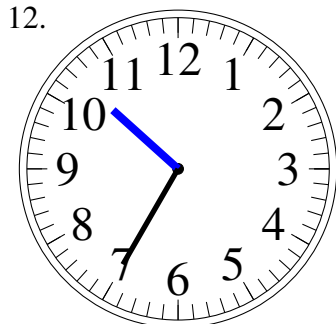
5:25

11.



7:50

12.



10:35