

# Sketching Analog Clocks (H)

Sketch each time on the clock face above it.

1.



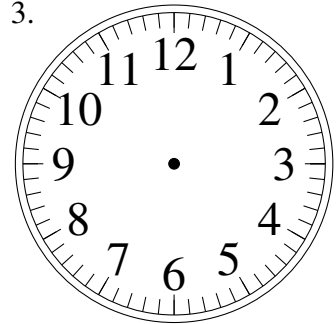
12:55

2.



9:55

3.



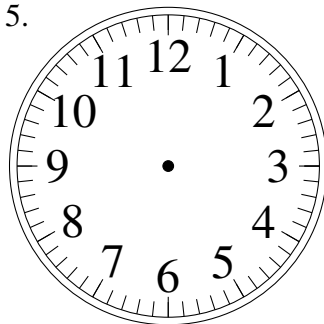
6:50

4.



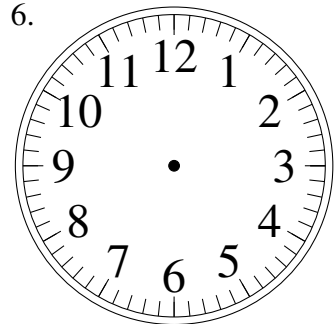
3:25

5.



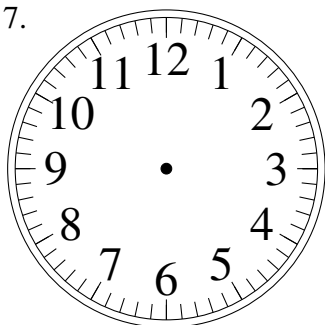
12:00

6.



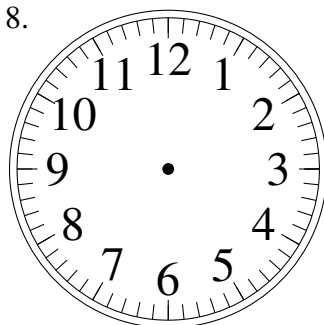
4:00

7.



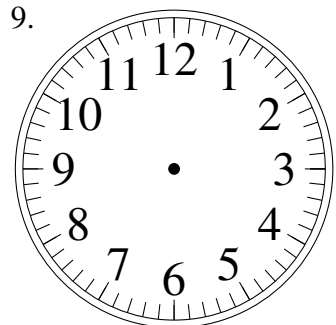
5:00

8.



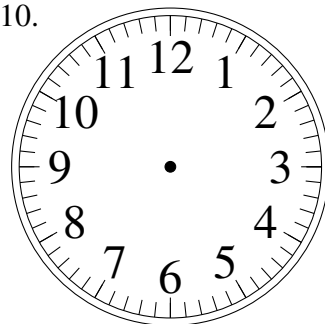
11:35

9.



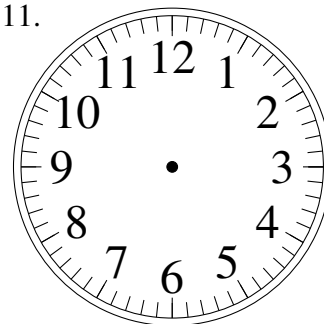
10:20

10.



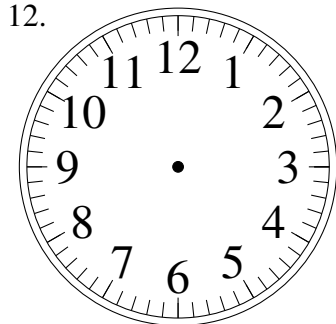
10:30

11.



12:55

12.

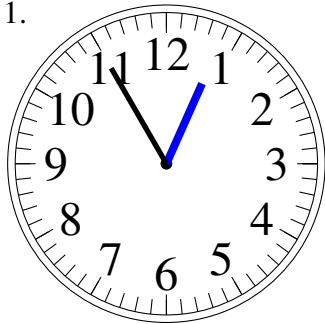


4:05

# Sketching Analog Clocks (H) Answers

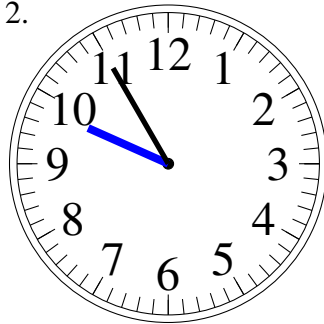
Sketch each time on the clock face above it.

1.



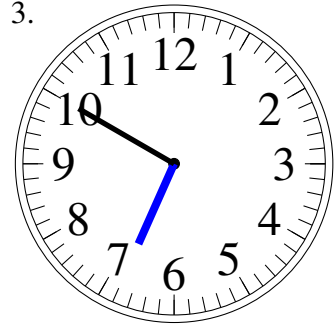
12:55

2.



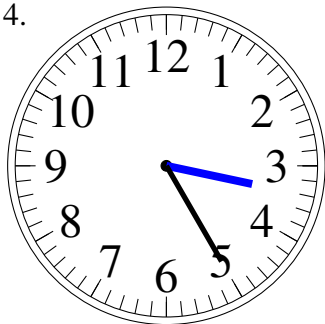
9:55

3.



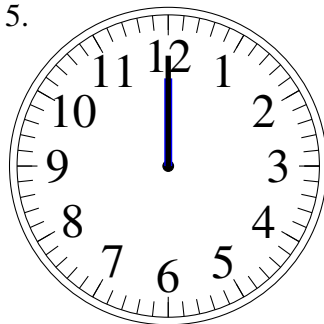
6:50

4.



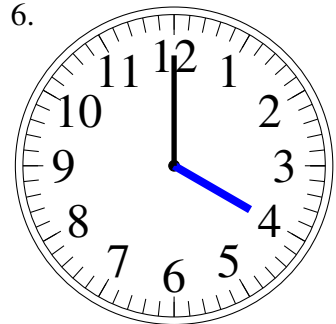
3:25

5.



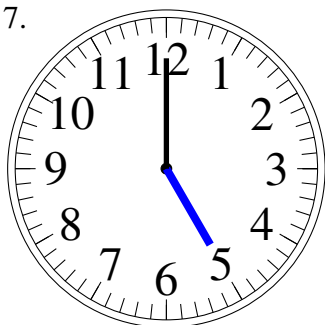
12:00

6.



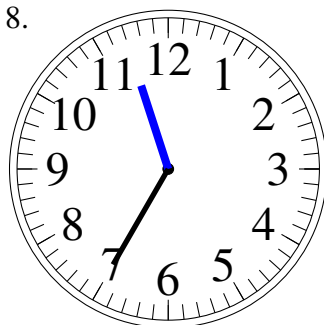
4:00

7.



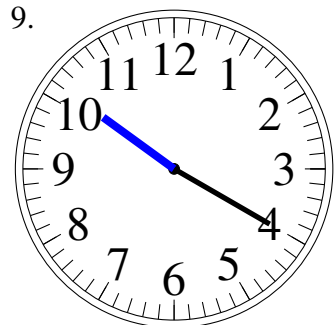
5:00

8.



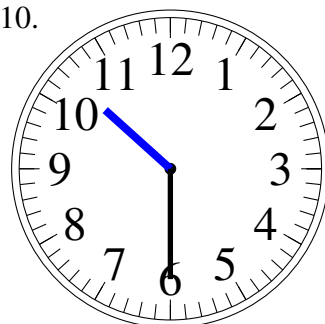
11:35

9.



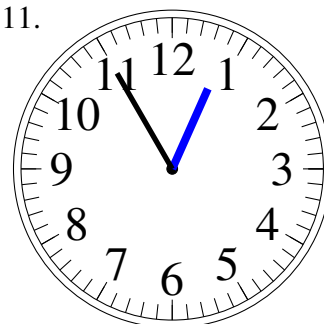
10:20

10.



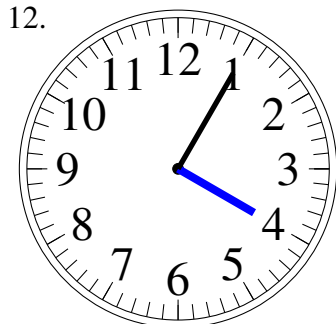
10:30

11.



12:55

12.



4:05