

Sketching Analog Clocks (H)

Sketch each time on the clock face above it.

1.



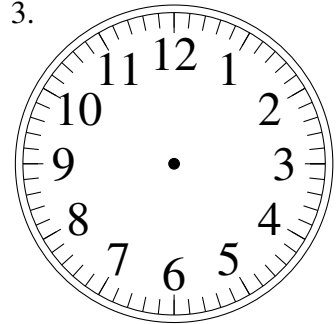
11:30

2.



9:45

3.



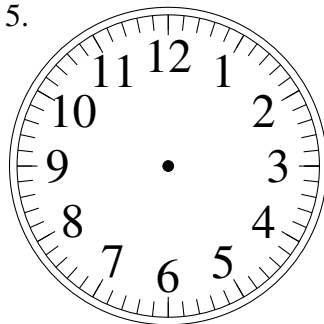
5:30

4.



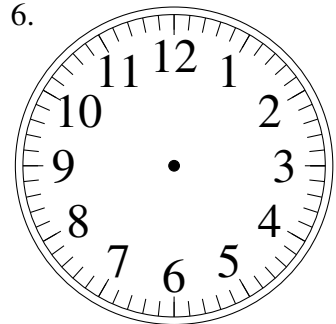
7:30

5.



11:30

6.



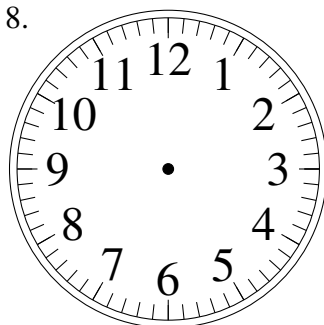
12:45

7.



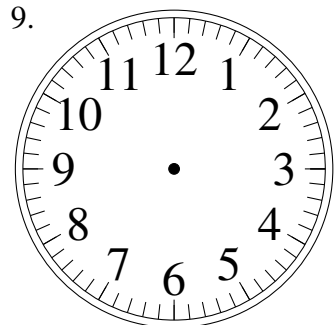
10:15

8.



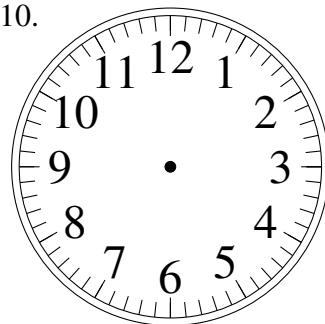
3:45

9.



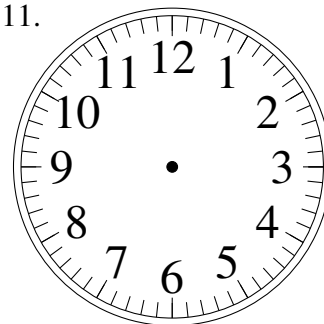
7:30

10.



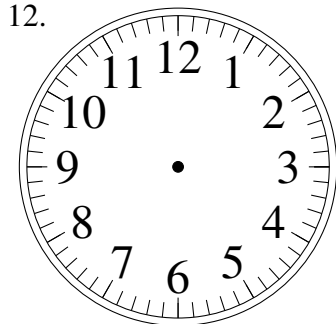
6:00

11.



11:30

12.

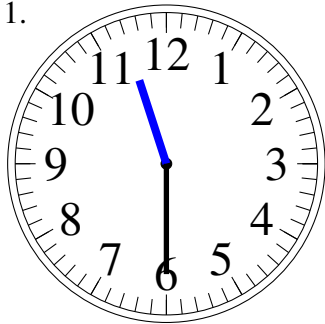


5:15

Sketching Analog Clocks (H) Answers

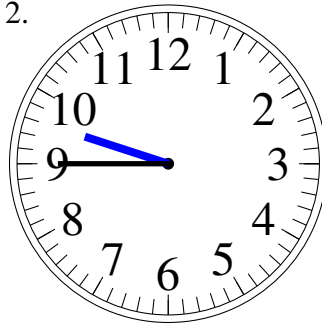
Sketch each time on the clock face above it.

1.



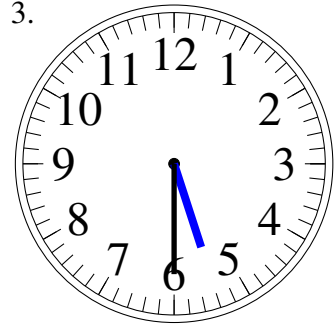
11:30

2.



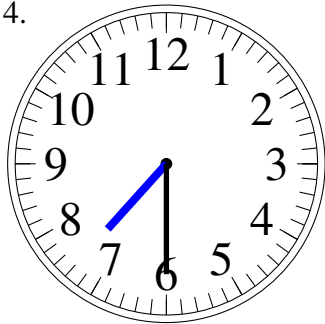
9:45

3.



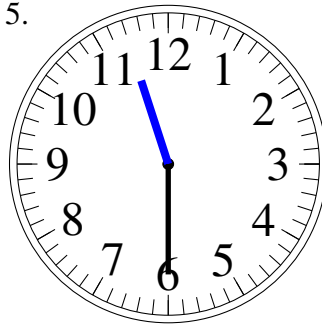
5:30

4.



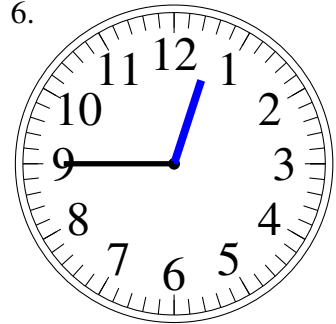
7:30

5.



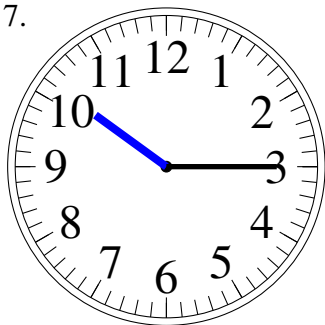
11:30

6.



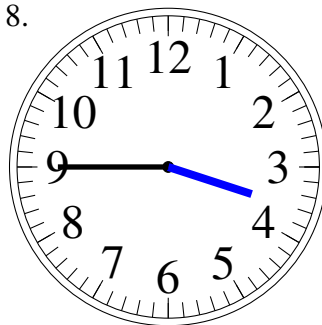
12:45

7.



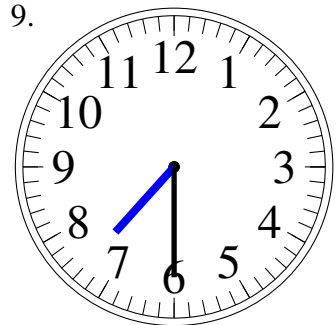
10:15

8.



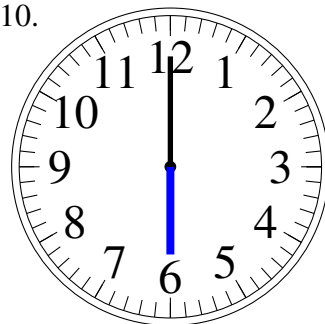
3:45

9.



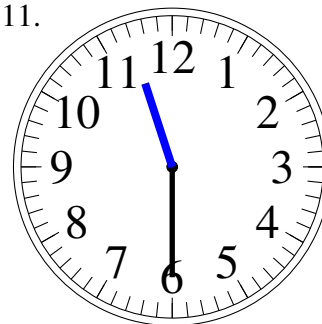
7:30

10.



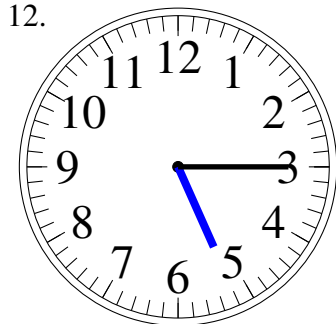
6:00

11.



11:30

12.



5:15