

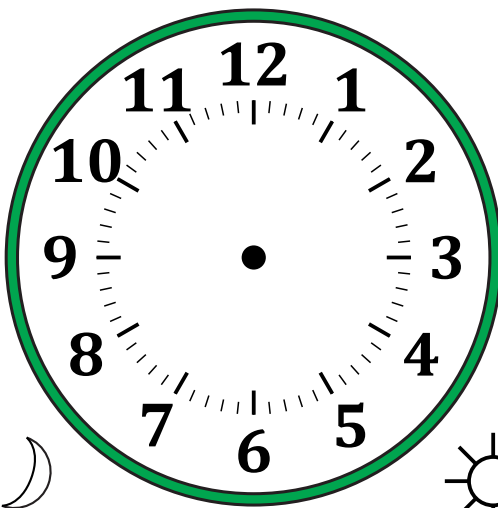
# Sketching Time on Analog Clocks (F)

Name: \_\_\_\_\_

Date: \_\_\_\_\_

Sketch each time on the clock face above it.

1.



Midnight

8:55:25 AM

Noon

An analog clock face with numbers 1 through 12. The hands are not drawn. To the left of the clock is a crescent moon icon labeled "Midnight". To the right is a sun icon labeled "Noon". Below the clock is the time "8:55:25 AM" underlined.

2.



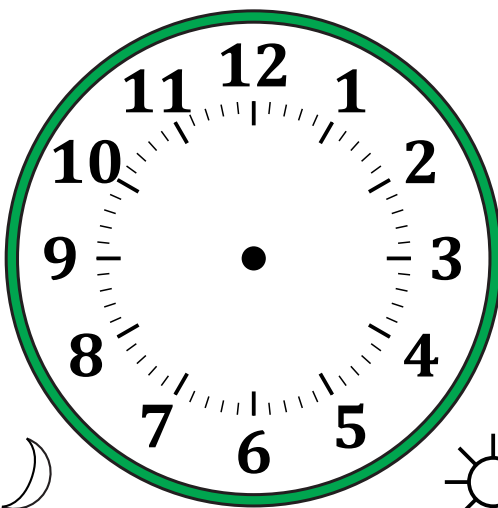
Noon

7:31:50 PM

Midnight

An analog clock face with numbers 1 through 12. The hands are not drawn. To the left of the clock is a sun icon labeled "Noon". To the right is a crescent moon icon labeled "Midnight". Below the clock is the time "7:31:50 PM" underlined.

3.



Midnight

3:38:40 AM

Noon

An analog clock face with numbers 1 through 12. The hands are not drawn. To the left of the clock is a crescent moon icon labeled "Midnight". To the right is a sun icon labeled "Noon". Below the clock is the time "3:38:40 AM" underlined.

4.



Noon

4:40:10 PM

Midnight

An analog clock face with numbers 1 through 12. The hands are not drawn. To the left of the clock is a sun icon labeled "Noon". To the right is a crescent moon icon labeled "Midnight". Below the clock is the time "4:40:10 PM" underlined.

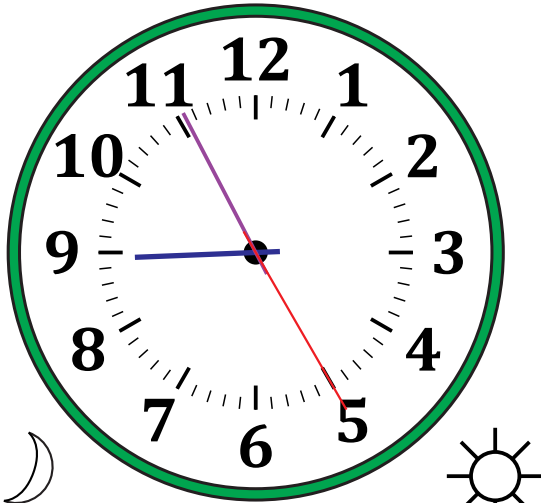
# Sketching Time on Analog Clocks (F) Answers

Name: \_\_\_\_\_

Date: \_\_\_\_\_

Sketch each time on the clock face above it.

1.

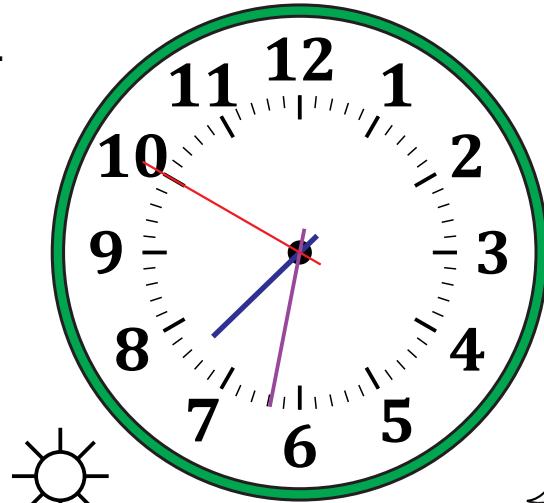


Midnight

8:55:25 AM

Noon

2.

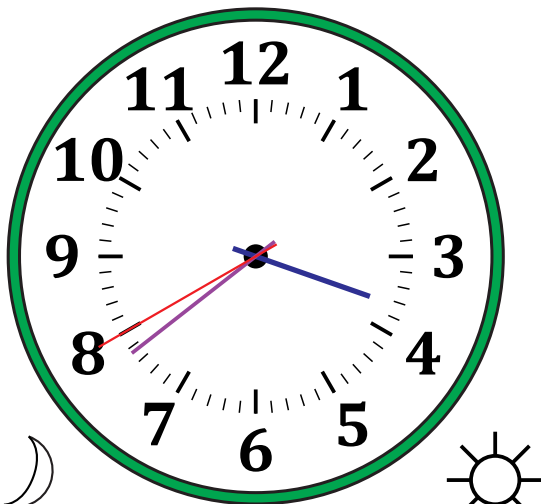


Noon

7:31:50 PM

Midnight

3.

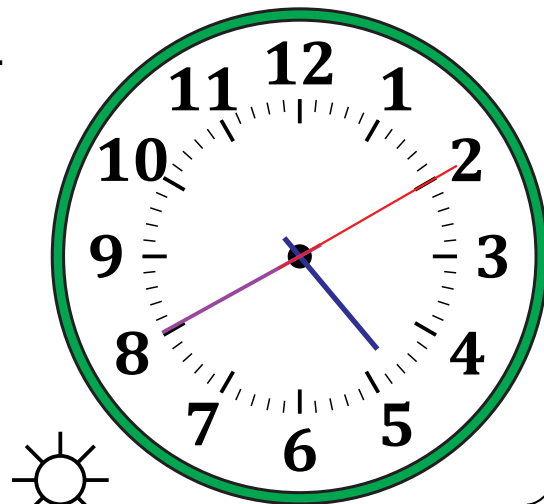


Midnight

3:38:40 AM

Noon

4.



Noon

4:40:10 PM

Midnight