

Sketching Analog Clocks (A)

Sketch each time on the clock face above it.

1.



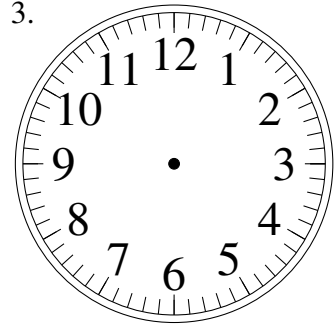
10:37.15

2.



6:03.45

3.



12:44.30

4.



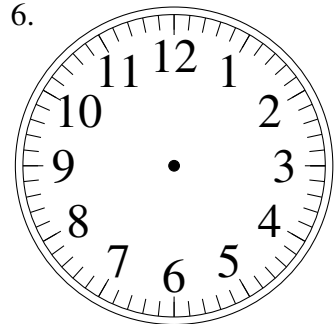
7:10.15

5.



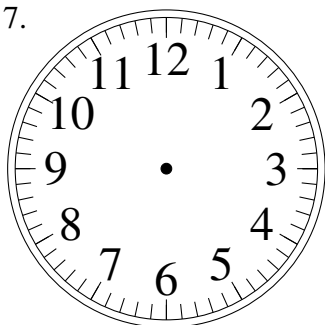
8:11.00

6.



1:06.30

7.



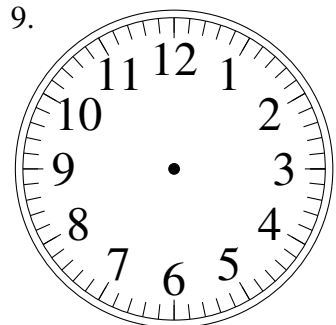
12:13.15

8.



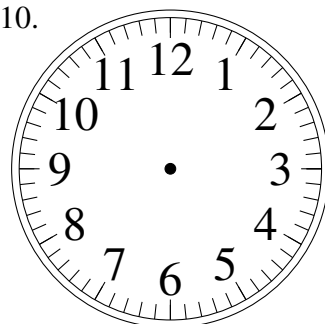
7:15.15

9.



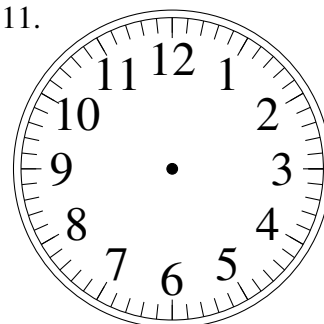
11:15.00

10.



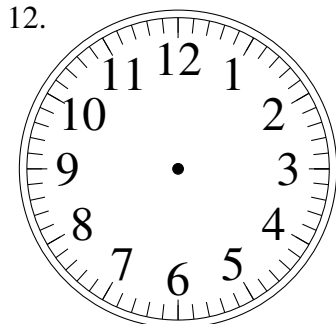
1:17.00

11.



2:31.00

12.

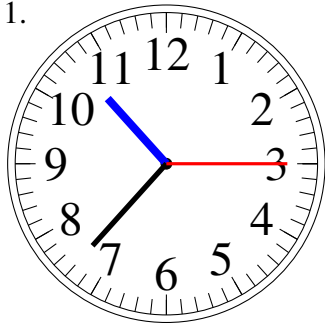


3:46.45

Sketching Analog Clocks (A) Answers

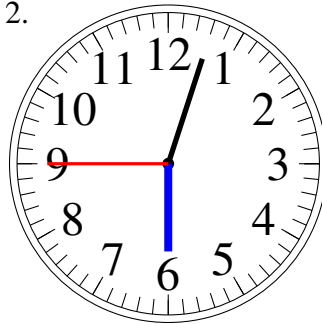
Sketch each time on the clock face above it.

1.



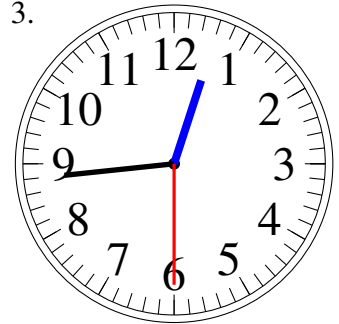
10:37.15

2.



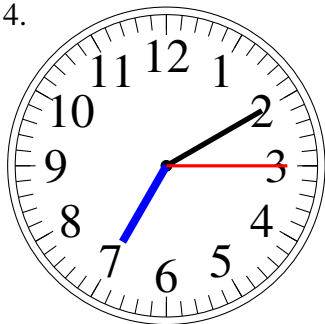
6:03.45

3.



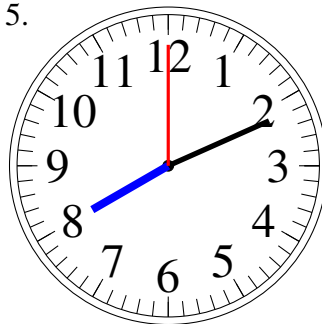
12:44.30

4.



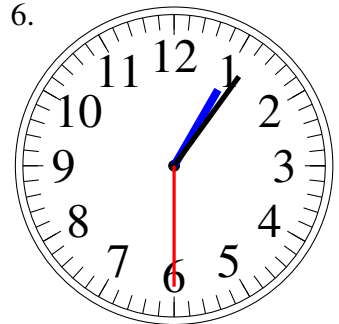
7:10.15

5.



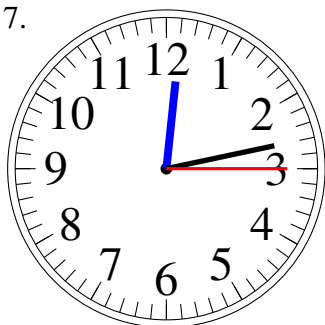
8:11.00

6.



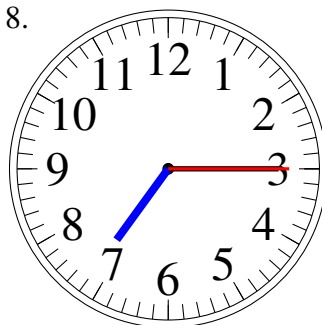
1:06.30

7.



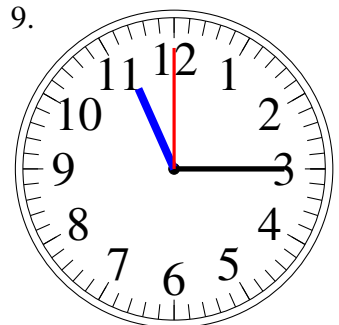
12:13.15

8.



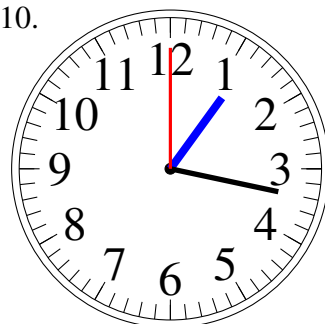
7:15.15

9.



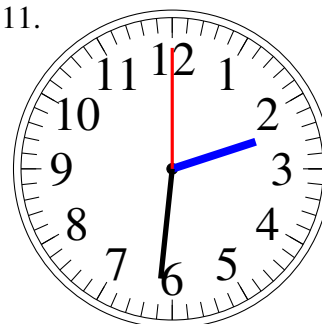
11:15.00

10.



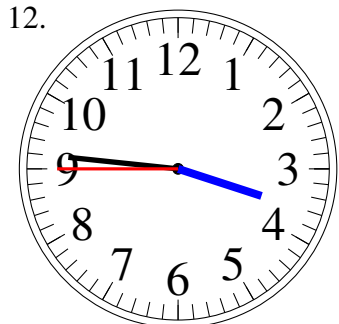
1:17.00

11.



2:31.00

12.



3:46.45