

# Sketching Analog Clocks (E)

Sketch each time on the clock face above it.

1.



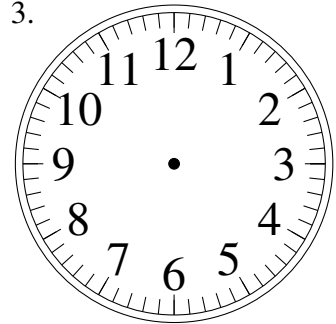
4:24.30

2.



3:02.30

3.



8:22.00

4.



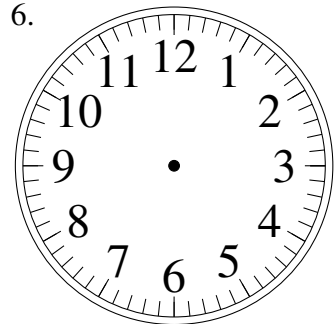
3:13.45

5.



12:14.00

6.



6:41.15

7.



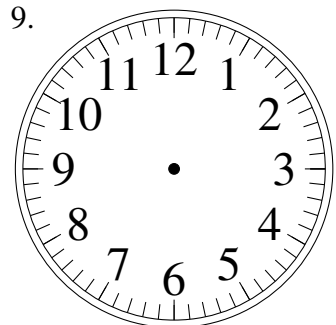
10:15.15

8.



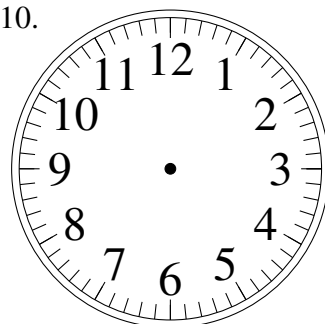
8:00.00

9.



2:25.30

10.



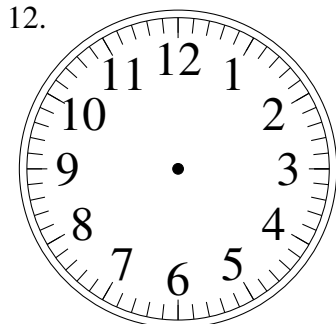
11:28.15

11.



9:38.00

12.

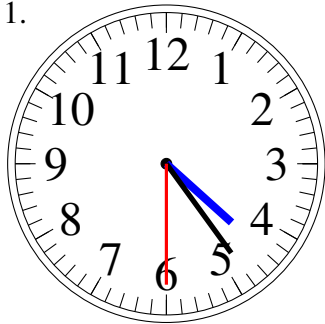


8:32.30

# Sketching Analog Clocks (E) Answers

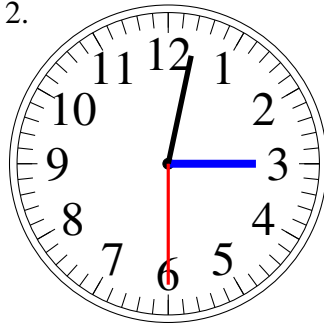
Sketch each time on the clock face above it.

1.



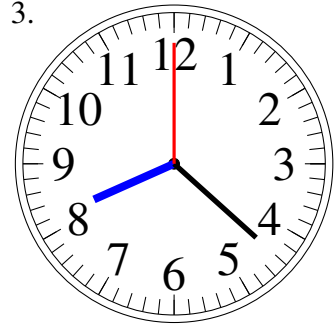
4:24.30

2.



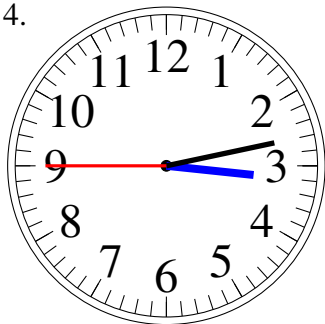
3:02.30

3.



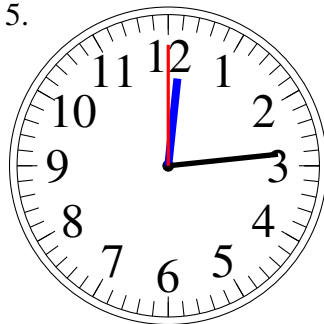
8:22.00

4.



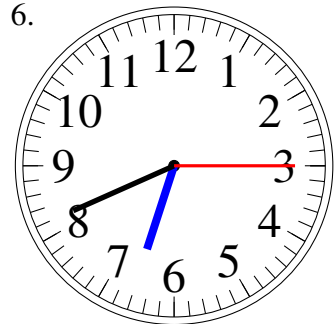
3:13.45

5.



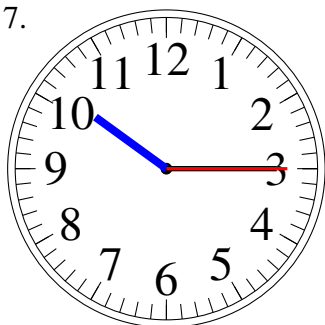
12:14.00

6.



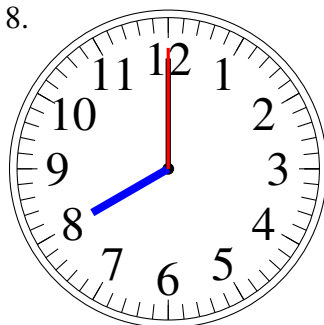
6:41.15

7.



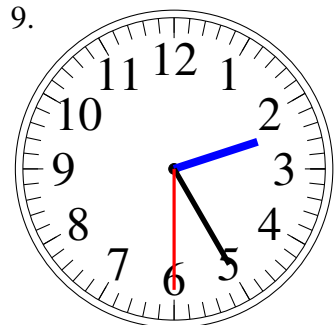
10:15.15

8.



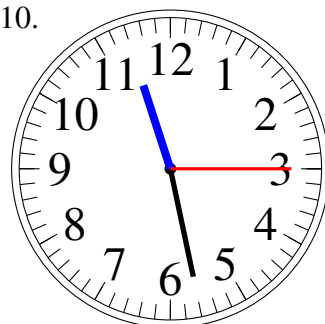
8:00.00

9.



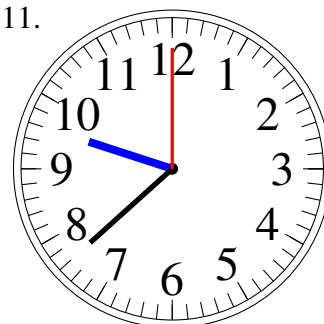
2:25.30

10.



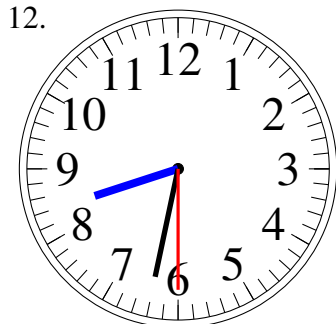
11:28.15

11.



9:38.00

12.



8:32.30