

Sketching Analog Clocks (G)

Sketch each time on the clock face above it.

1.



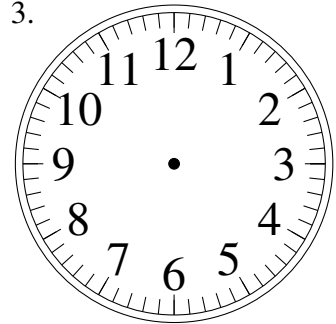
10:24.45

2.



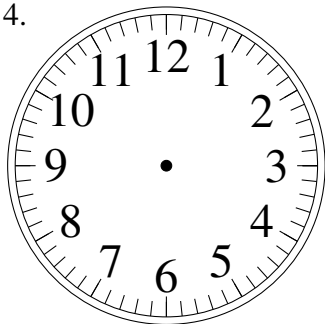
5:26.00

3.



9:26.00

4.



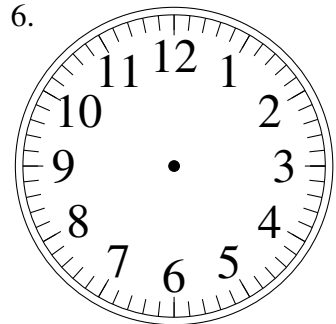
11:27.30

5.



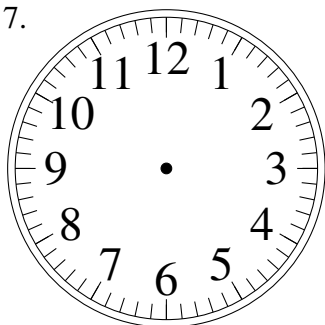
8:14.30

6.



5:57.45

7.



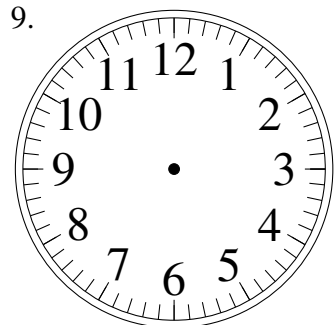
8:09.15

8.



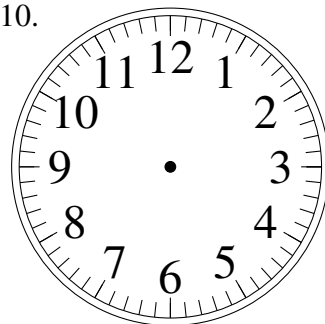
4:48.15

9.



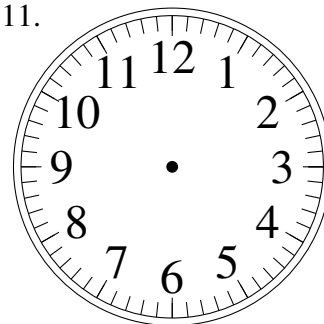
5:41.30

10.



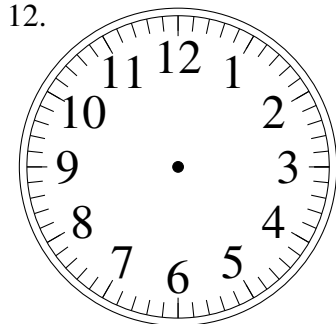
4:13.30

11.



6:32.15

12.

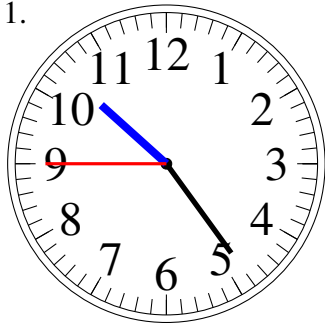


8:58.45

Sketching Analog Clocks (G) Answers

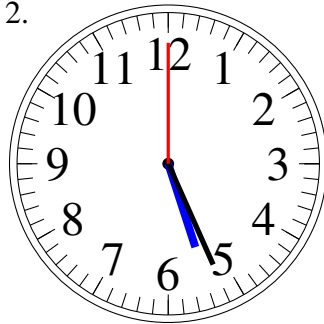
Sketch each time on the clock face above it.

1.



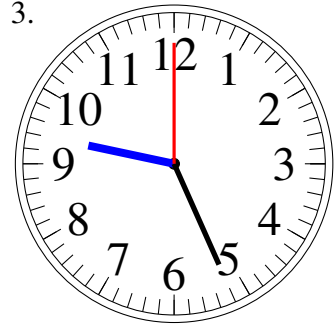
10:24.45

2.



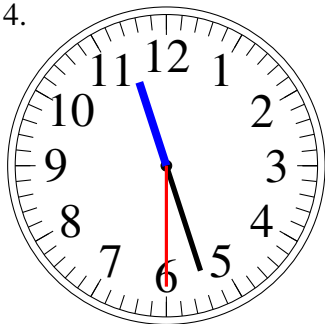
5:26.00

3.



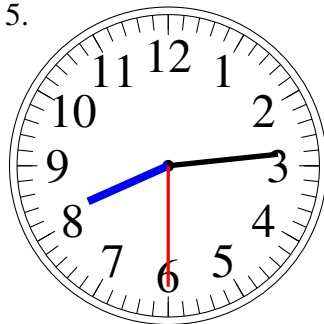
9:26.00

4.



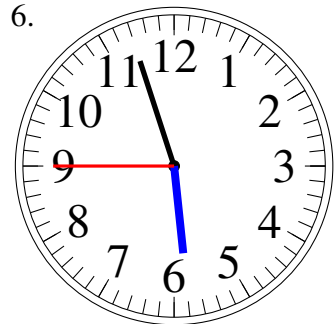
11:27.30

5.



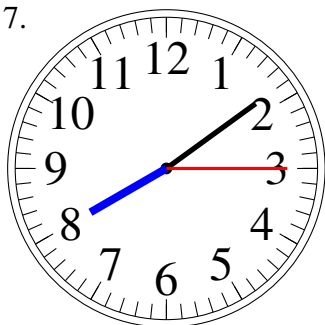
8:14.30

6.



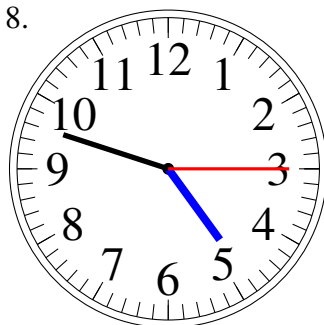
5:57.45

7.



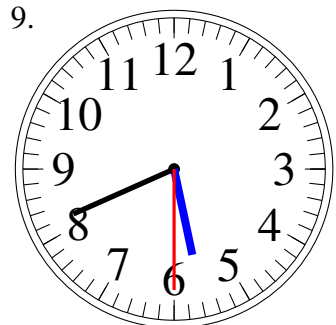
8:09.15

8.



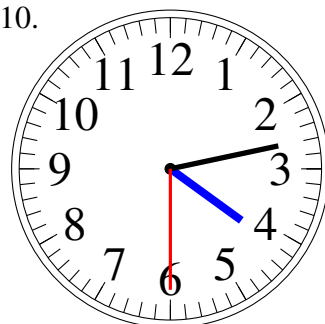
4:48.15

9.



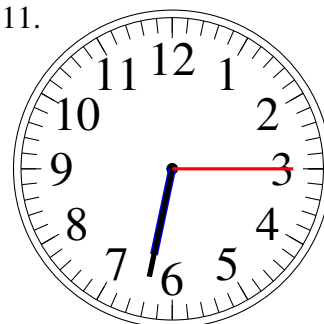
5:41.30

10.



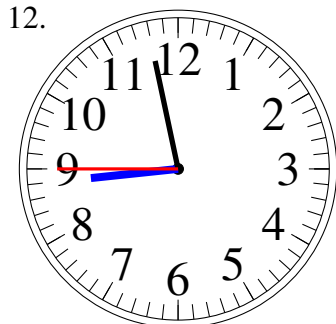
4:13.30

11.



6:32.15

12.



8:58.45