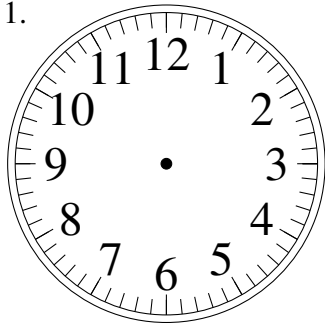


Sketching Analog Clocks (I)

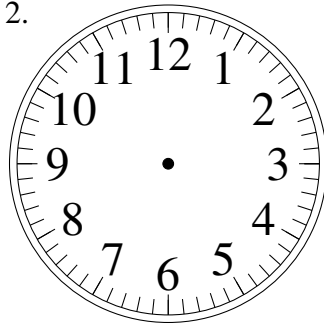
Sketch each time on the clock face above it.

1.



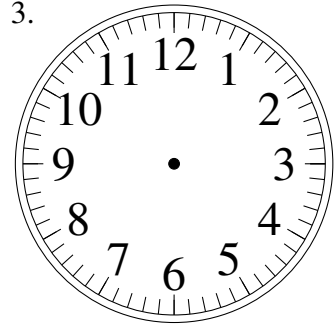
4:27.00

2.



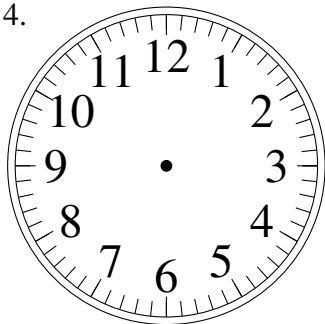
11:41.45

3.



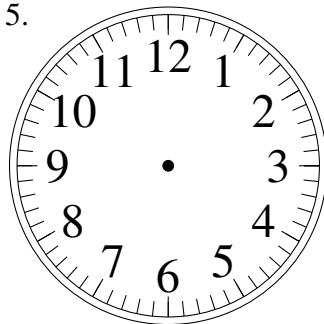
4:08.45

4.



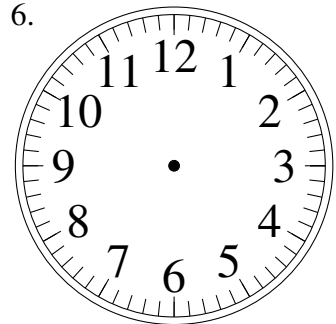
10:03.30

5.



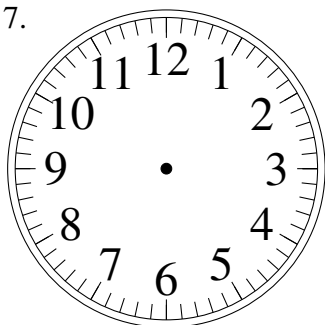
10:58.45

6.



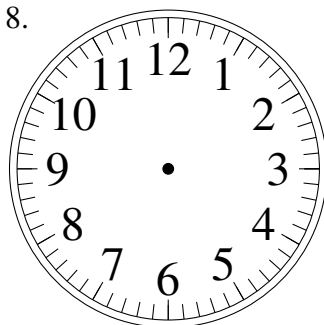
6:13.45

7.



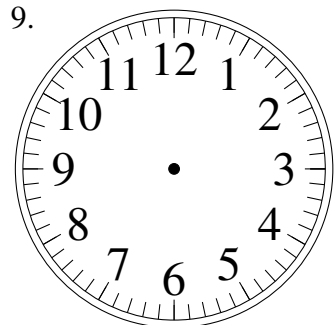
1:07.00

8.



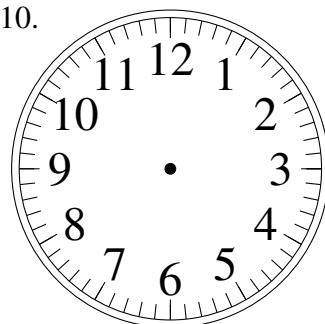
4:07.30

9.



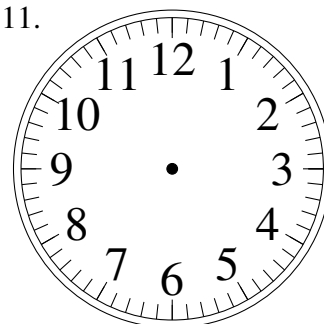
1:25.15

10.



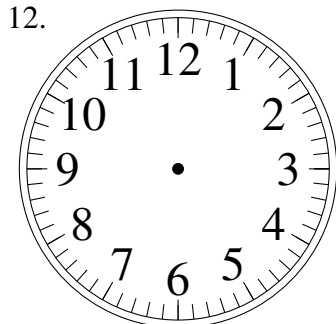
9:27.30

11.



11:57.00

12.

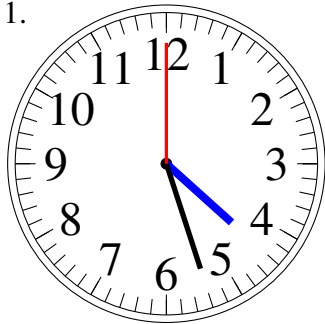


9:18.15

Sketching Analog Clocks (I) Answers

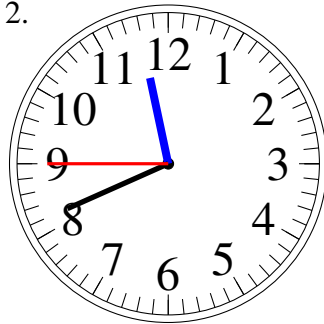
Sketch each time on the clock face above it.

1.



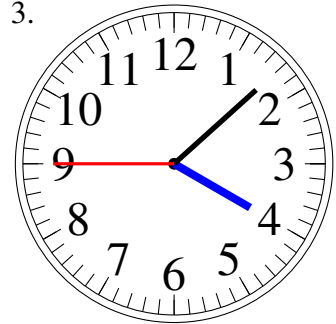
4:27.00

2.



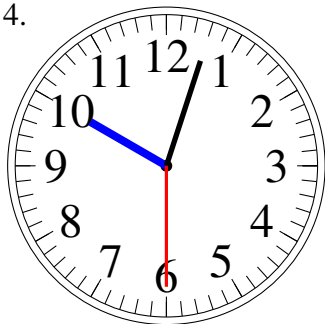
11:41.45

3.



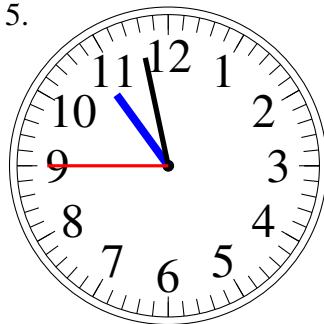
4:08.45

4.



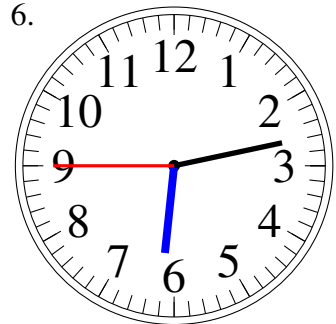
10:03.30

5.



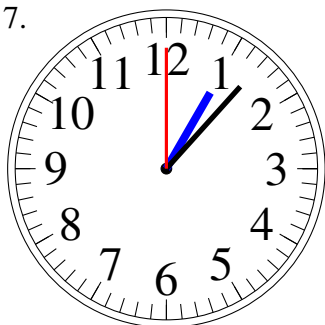
10:58.45

6.



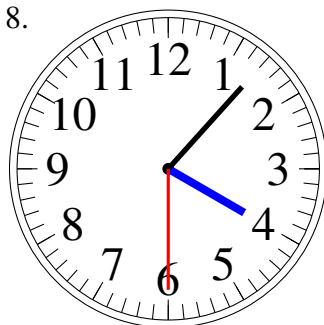
6:13.45

7.



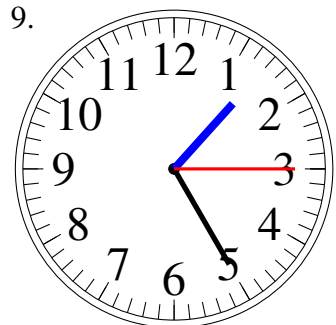
1:07.00

8.



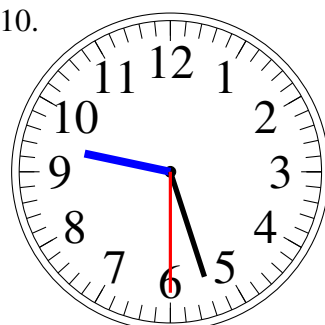
4:07.30

9.



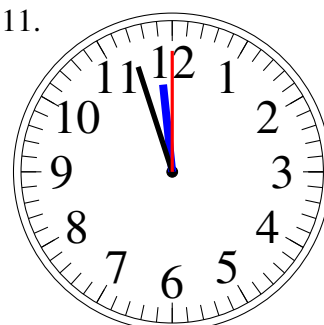
1:25.15

10.



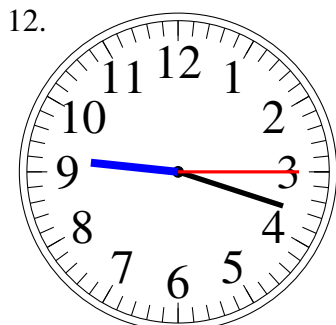
9:27.30

11.



11:57.00

12.



9:18.15