

# Sketching Analog Clocks (A)

Sketch each time on the clock face above it.

1.



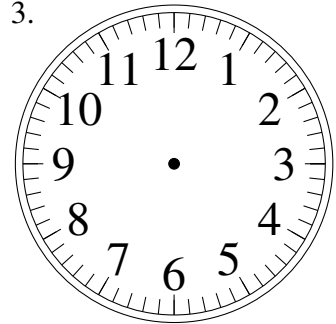
1:22.00

2.



5:07.30

3.



2:02.00

4.



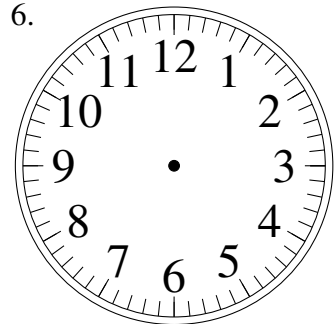
12:24.00

5.



7:43.30

6.



10:22.30

7.



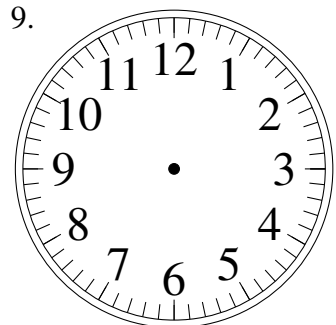
12:54.00

8.



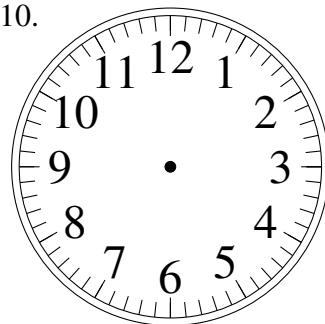
11:15.30

9.



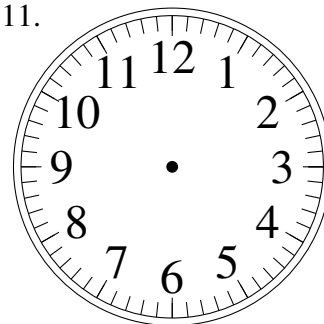
10:00.30

10.



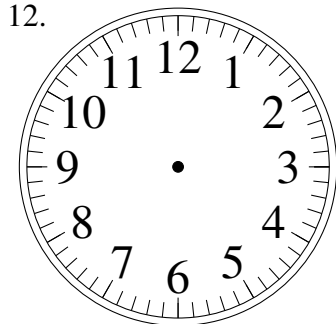
5:07.30

11.



1:41.30

12.

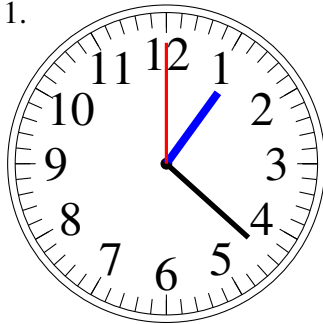


12:25.30

# Sketching Analog Clocks (A) Answers

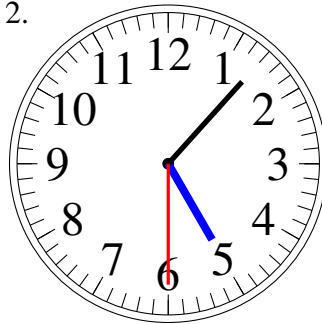
Sketch each time on the clock face above it.

1.



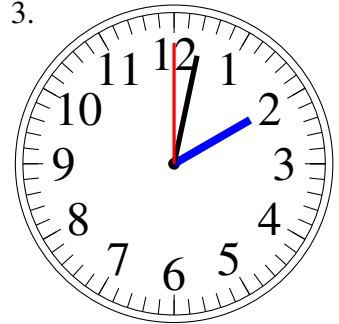
1:22.00

2.



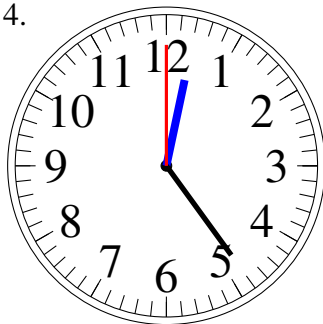
5:07.30

3.



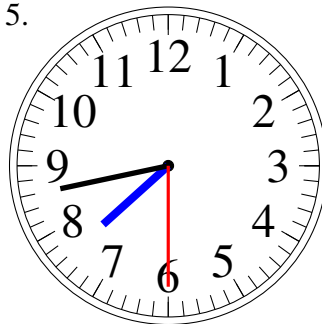
2:02.00

4.



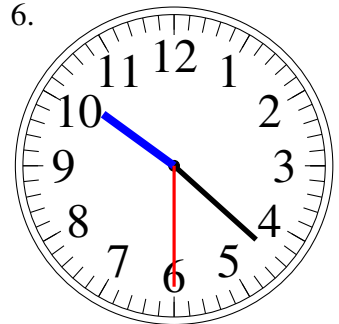
12:24.00

5.



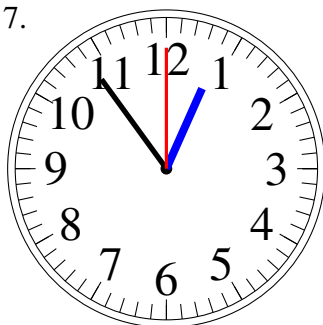
7:43.30

6.



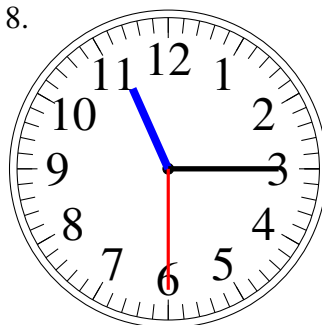
10:22.30

7.



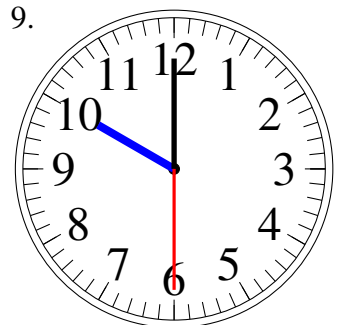
12:54.00

8.



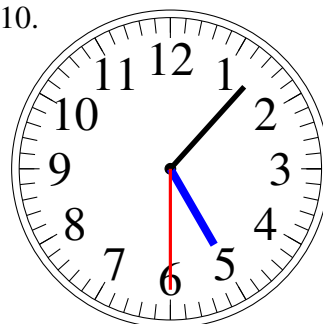
11:15.30

9.



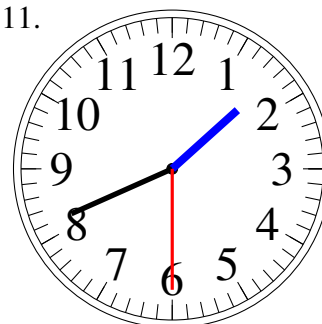
10:00.30

10.



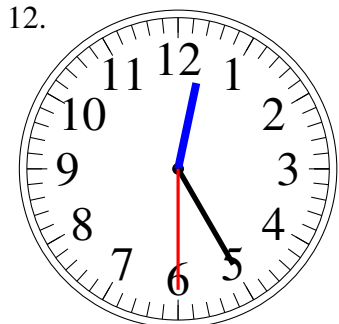
5:07.30

11.



1:41.30

12.



12:25.30