

Sketching Analog Clocks (G)

Sketch each time on the clock face above it.

1.



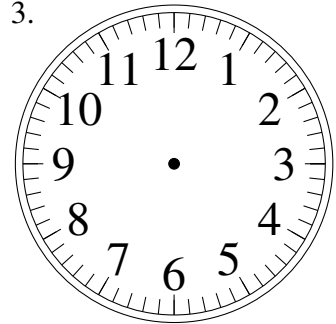
2:06.00

2.



10:05.00

3.



7:29.00

4.



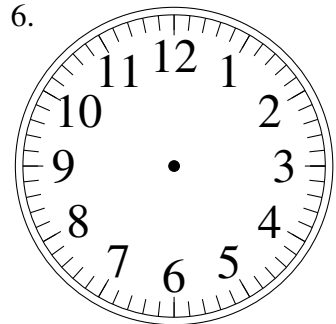
6:36.30

5.



1:55.00

6.



12:14.00

7.



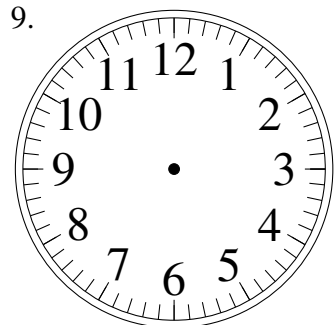
6:43.00

8.



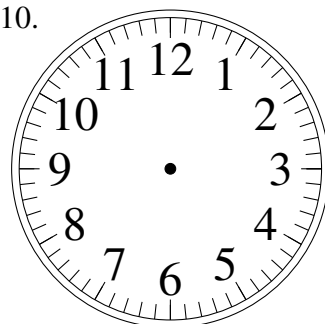
7:02.00

9.



1:08.30

10.



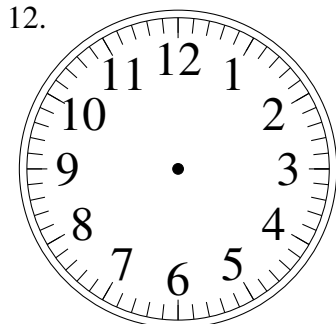
1:06.30

11.



3:15.30

12.

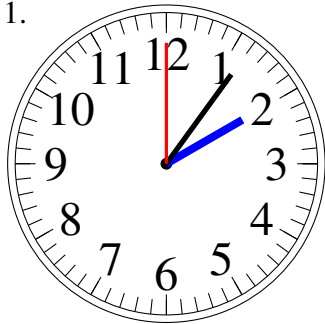


4:47.00

Sketching Analog Clocks (G) Answers

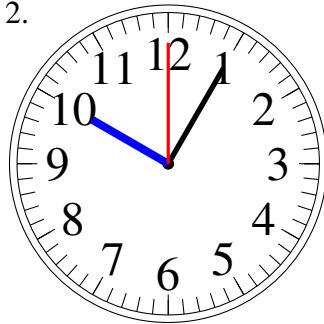
Sketch each time on the clock face above it.

1.



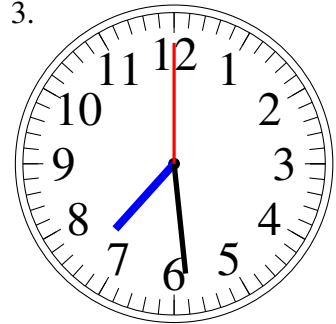
2:06.00

2.



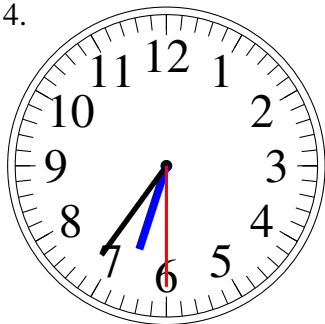
10:05.00

3.



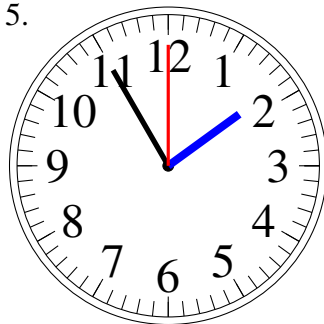
7:29.00

4.



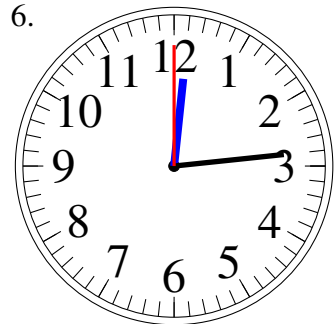
6:36.30

5.



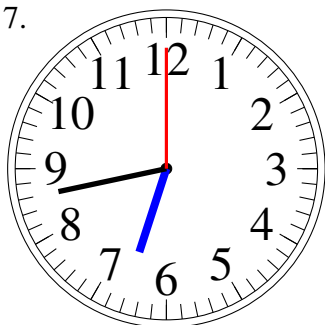
1:55.00

6.



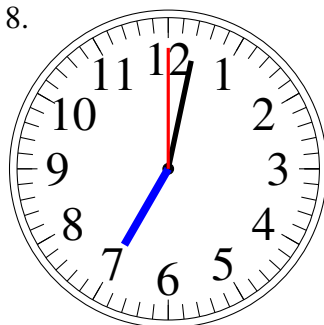
12:14.00

7.



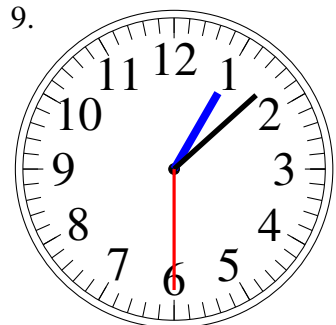
6:43.00

8.



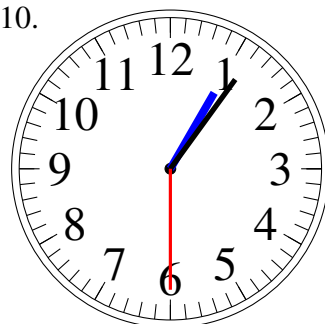
7:02.00

9.



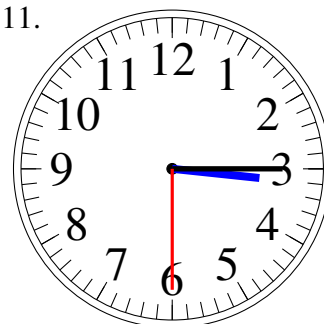
1:08.30

10.



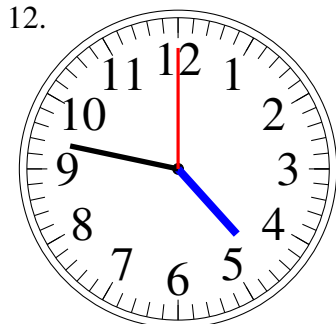
1:06.30

11.



3:15.30

12.



4:47.00