

Sketching Analog Clocks (H)

Sketch each time on the clock face above it.

1.



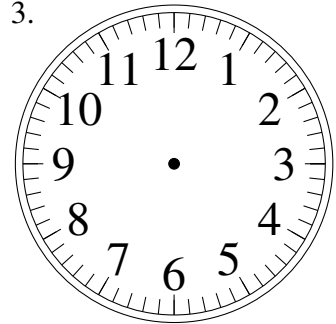
9:49.00

2.



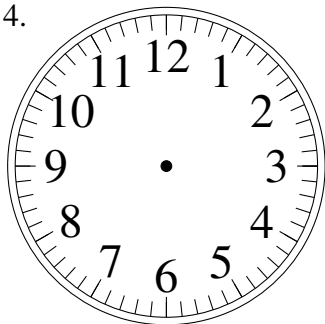
8:24.00

3.



5:20.30

4.



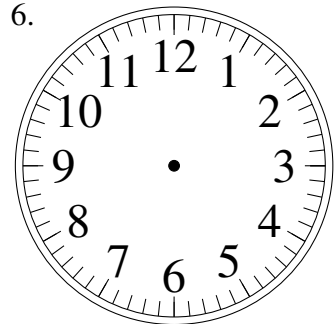
5:52.30

5.



6:28.30

6.



12:50.30

7.



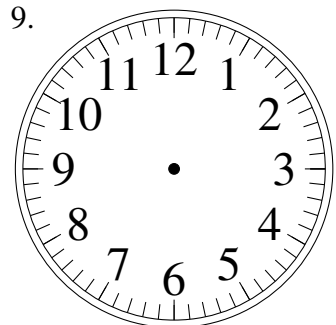
7:01.00

8.



7:48.30

9.



1:12.00

10.



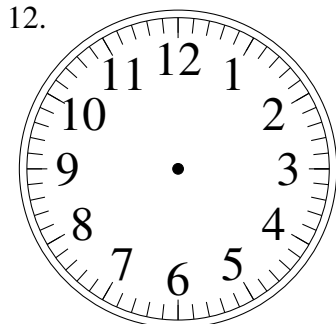
3:44.30

11.



2:07.30

12.

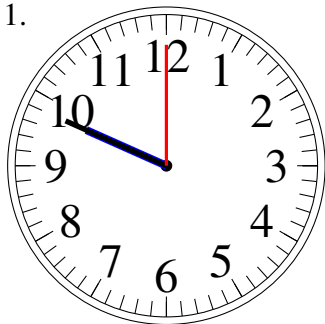


6:38.00

Sketching Analog Clocks (H) Answers

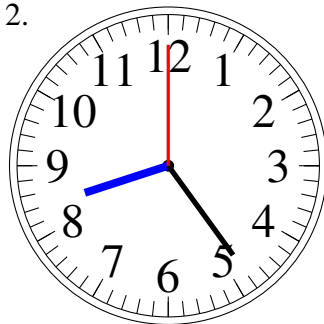
Sketch each time on the clock face above it.

1.



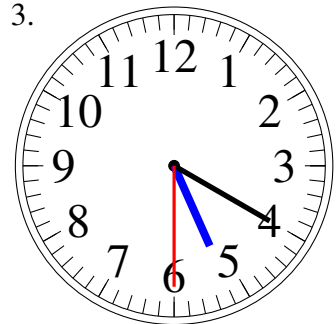
9:49.00

2.



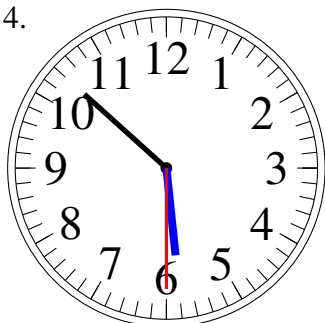
8:24.00

3.



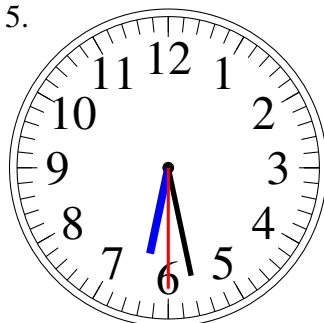
5:20.30

4.



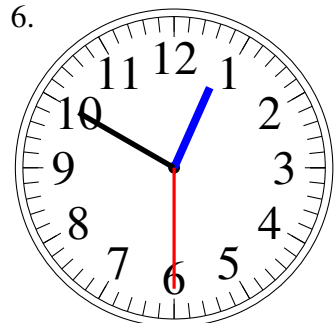
5:52.30

5.



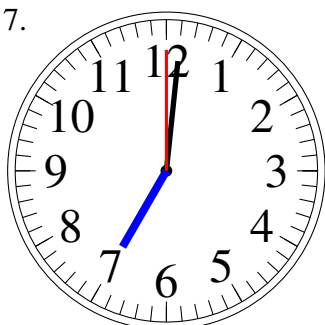
6:28.30

6.



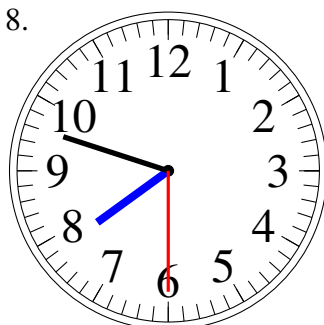
12:50.30

7.



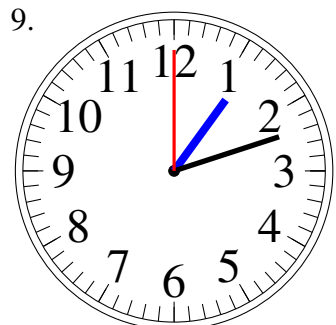
7:01.00

8.



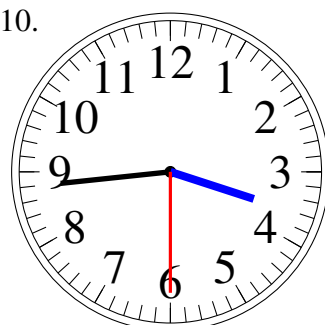
7:48.30

9.



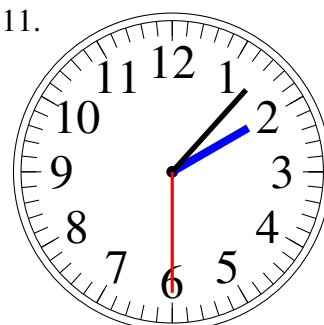
1:12.00

10.



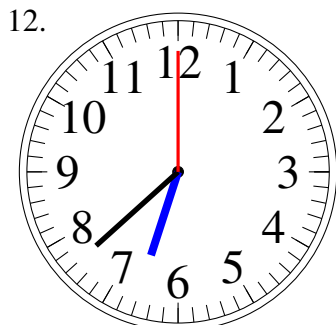
3:44.30

11.



2:07.30

12.



6:38.00