

Sketching Analog Clocks (J)

Sketch each time on the clock face above it.

1.



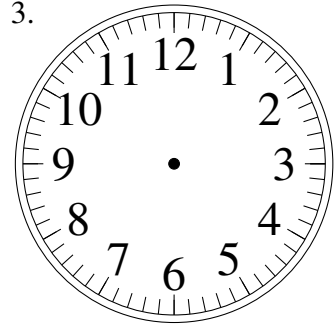
7:13.00

2.



8:53.30

3.



7:18.30

4.



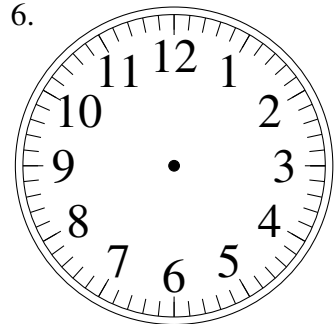
12:24.00

5.



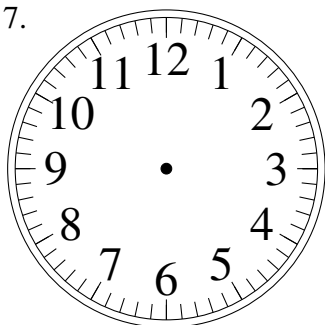
4:26.30

6.



7:07.30

7.



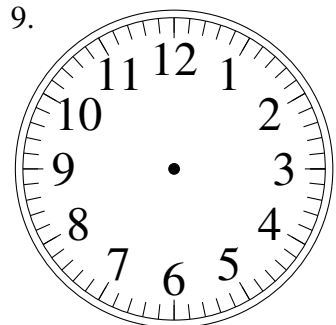
6:02.30

8.



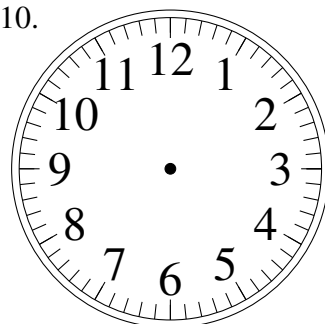
12:22.30

9.



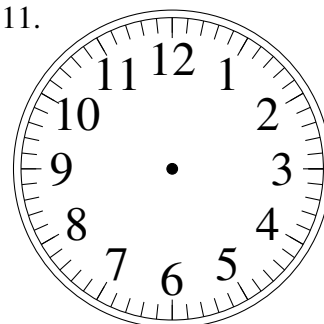
8:33.30

10.



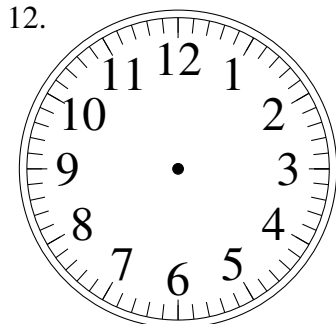
2:58.30

11.



7:34.30

12.

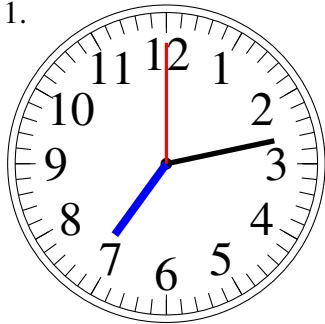


2:32.30

Sketching Analog Clocks (J) Answers

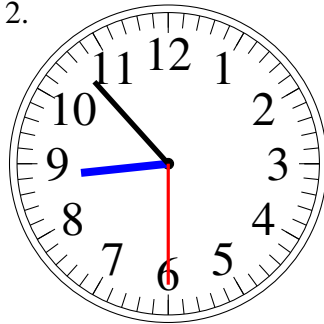
Sketch each time on the clock face above it.

1.



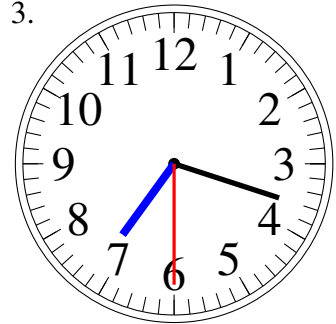
7:13.00

2.



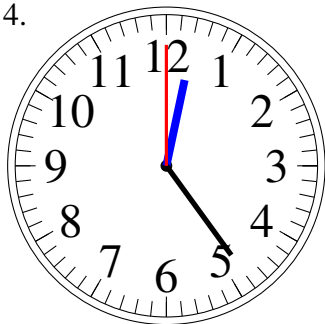
8:53.30

3.



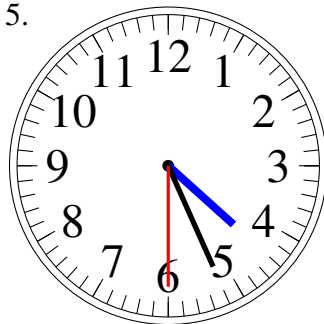
7:18.30

4.



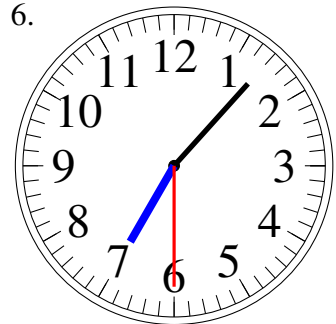
12:24.00

5.



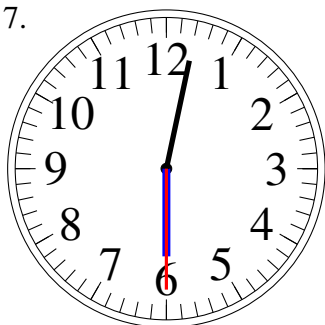
4:26.30

6.



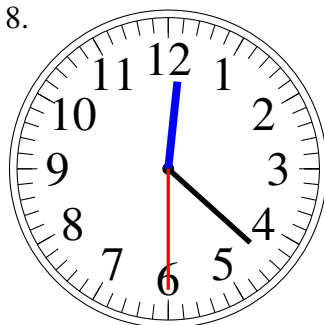
7:07.30

7.



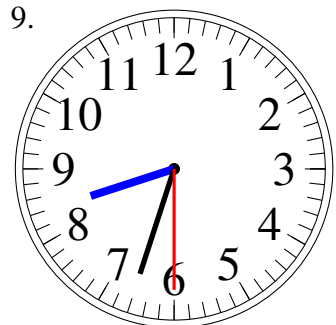
6:02.30

8.



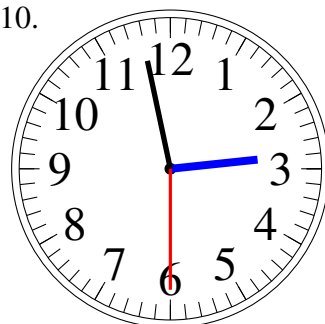
12:22.30

9.



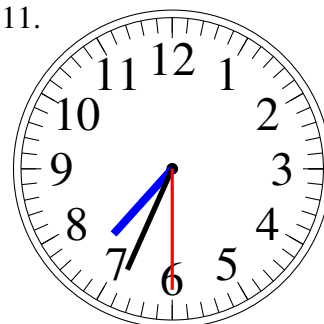
8:33.30

10.



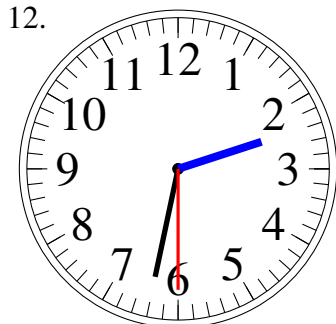
2:58.30

11.



7:34.30

12.



2:32.30