

# Sketching Analog Clocks (A)

Sketch each time on the clock face above it.

1.



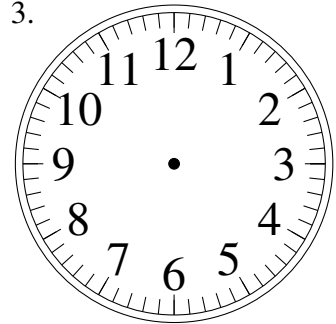
1:22.00

2.



5:07.30

3.



2:02.00

4.



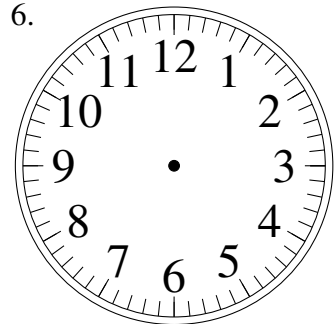
12:24.00

5.



7:43.30

6.



10:22.30

7.



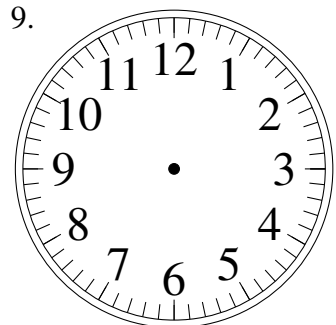
12:54.00

8.



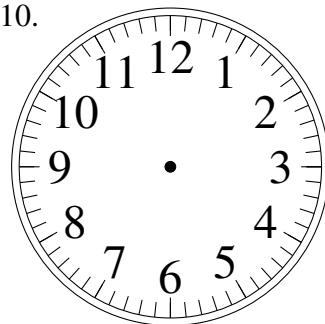
11:15.30

9.



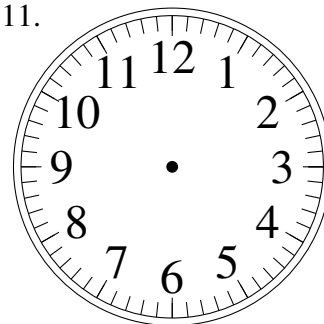
10:00.30

10.



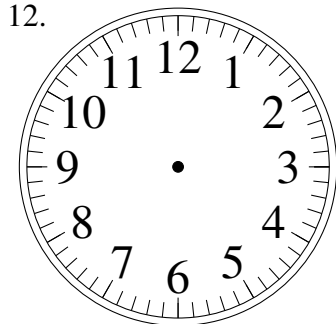
5:07.30

11.



1:41.30

12.

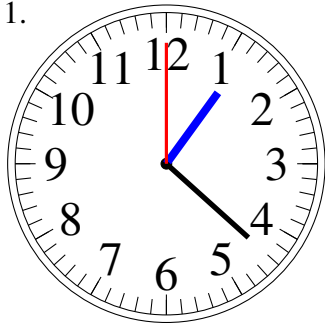


12:25.30

# Sketching Analog Clocks (A) Answers

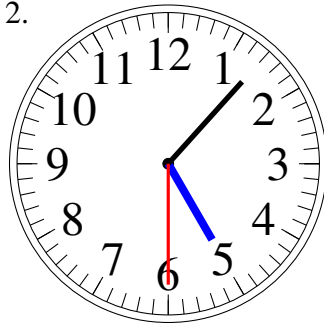
Sketch each time on the clock face above it.

1.



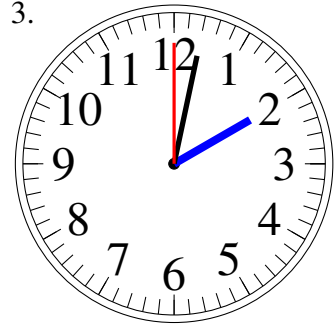
1:22.00

2.



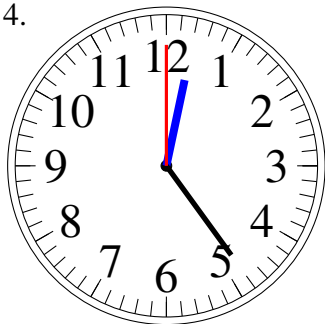
5:07.30

3.



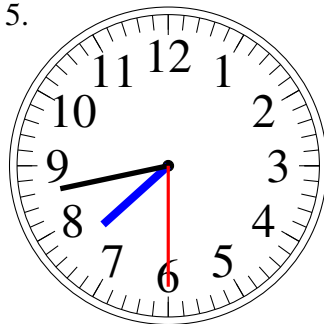
2:02.00

4.



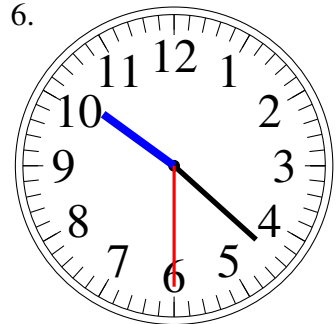
12:24.00

5.



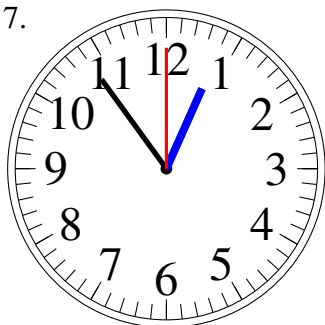
7:43.30

6.



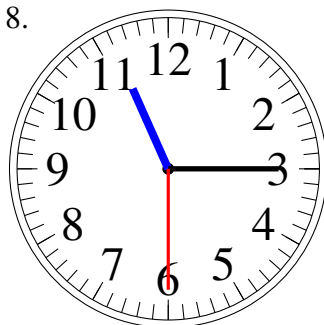
10:22.30

7.



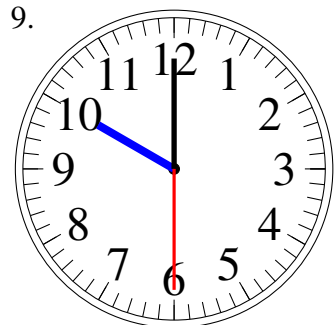
12:54.00

8.



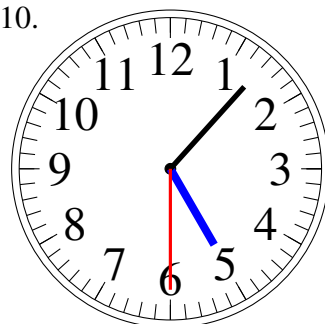
11:15.30

9.



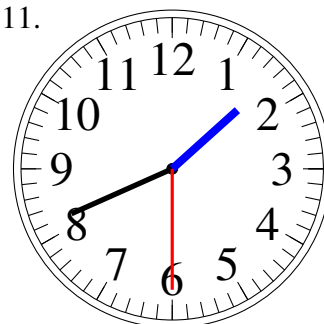
10:00.30

10.



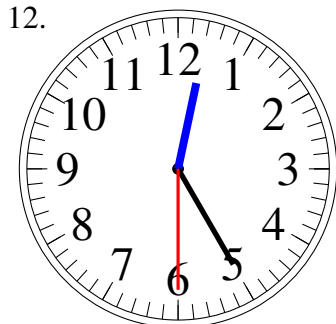
5:07.30

11.



1:41.30

12.



12:25.30

# Sketching Analog Clocks (B)

Sketch each time on the clock face above it.

1.



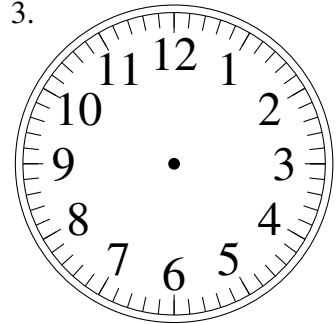
7:17.30

2.



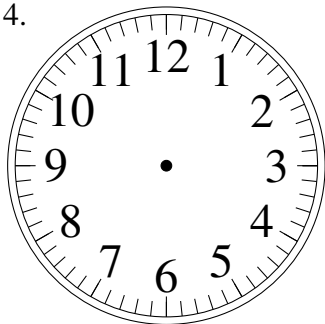
10:37.00

3.



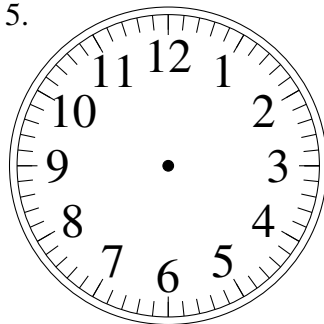
6:40.30

4.



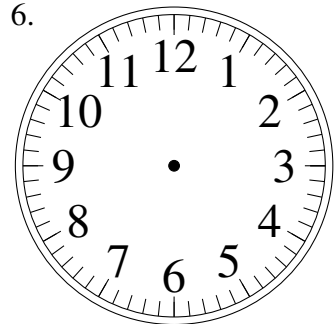
8:39.30

5.



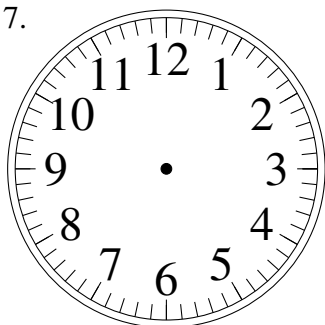
5:54.30

6.



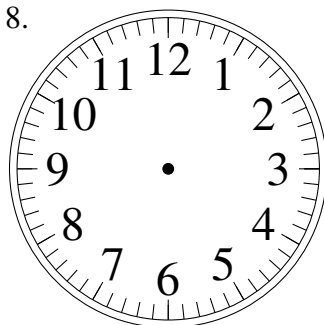
2:32.00

7.



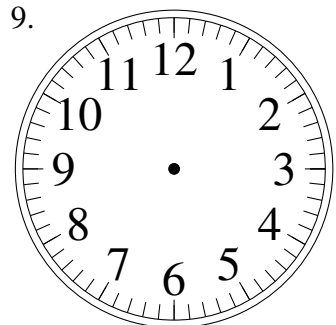
11:50.00

8.



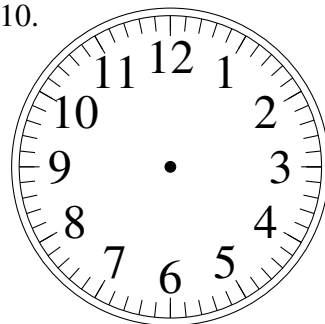
5:52.30

9.



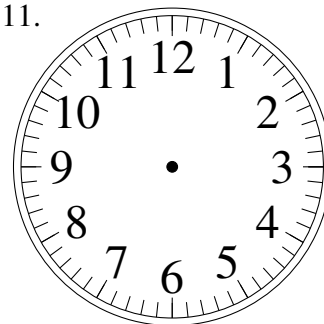
8:23.30

10.



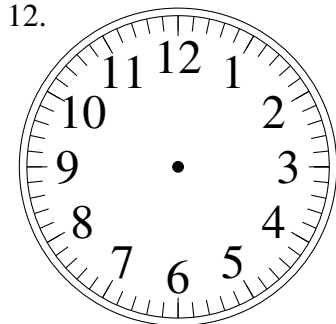
11:05.30

11.



7:58.00

12.

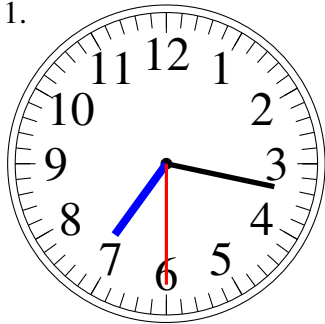


8:11.00

# Sketching Analog Clocks (B) Answers

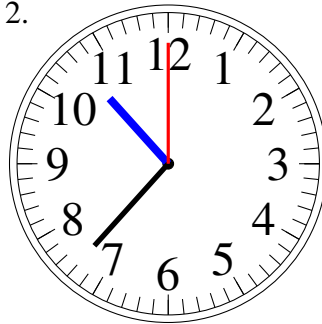
Sketch each time on the clock face above it.

1.



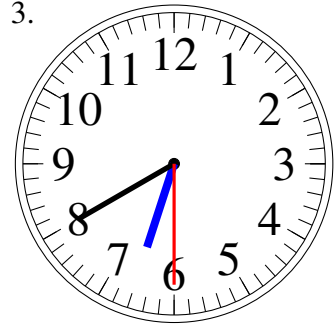
7:17.30

2.



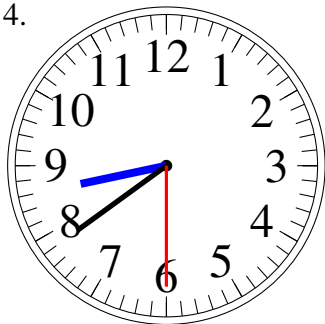
10:37.00

3.



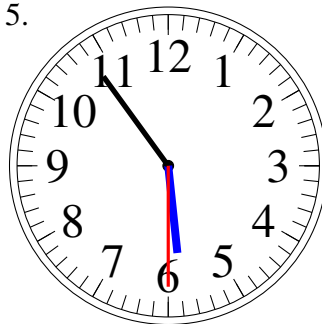
6:40.30

4.



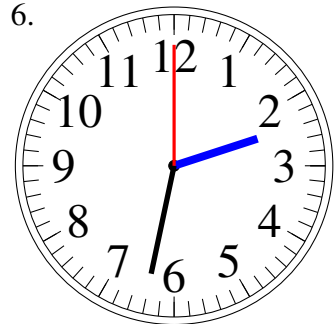
8:39.30

5.



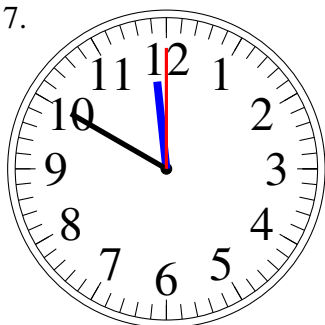
5:54.30

6.



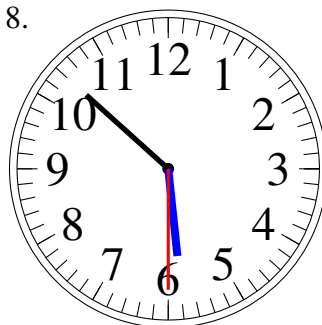
2:32.00

7.



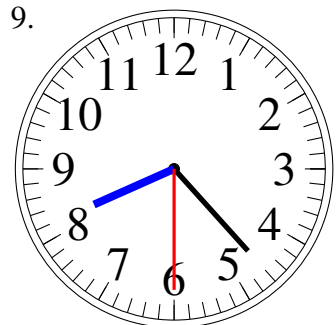
11:50.00

8.



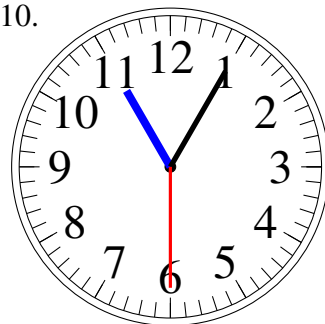
5:52.30

9.



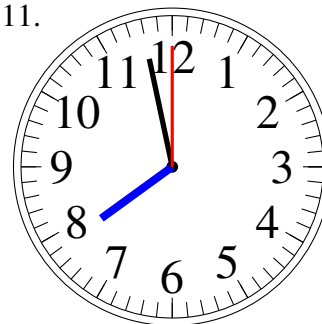
8:23.30

10.



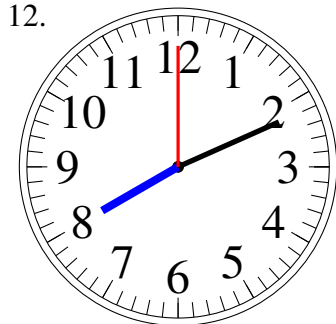
11:05.30

11.



7:58.00

12.

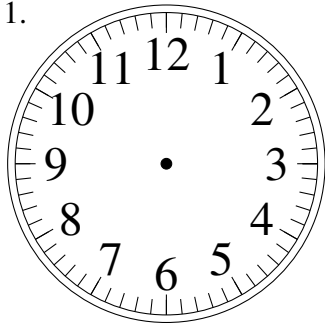


8:11.00

# Sketching Analog Clocks (C)

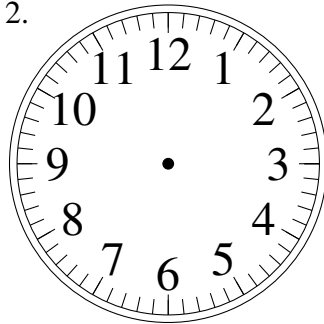
Sketch each time on the clock face above it.

1.



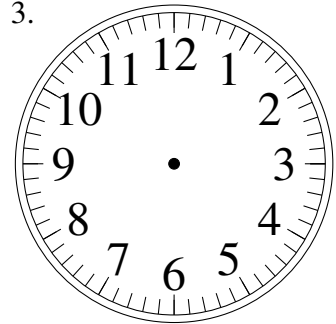
6:59.00

2.



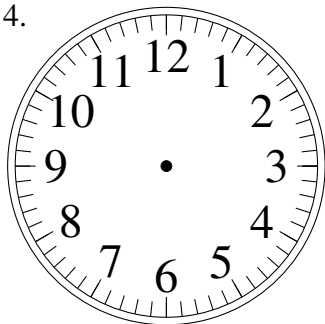
1:52.30

3.



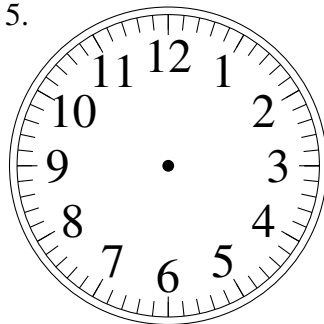
3:10.30

4.



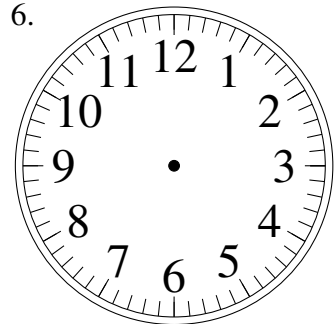
4:54.00

5.



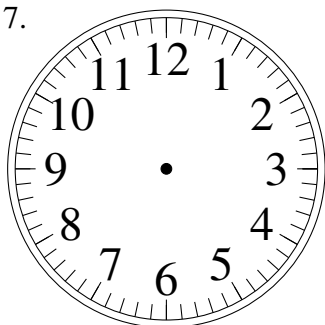
3:46.30

6.



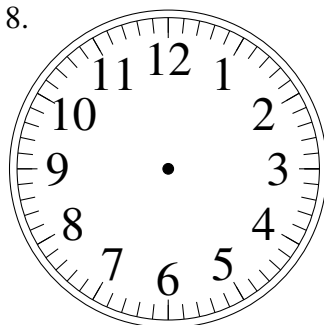
2:31.00

7.



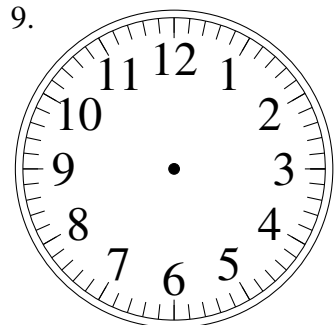
10:10.00

8.



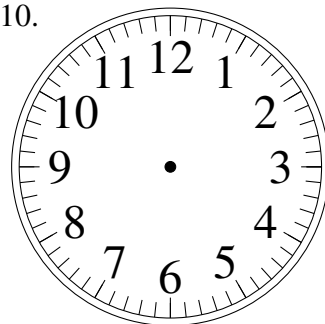
4:01.00

9.



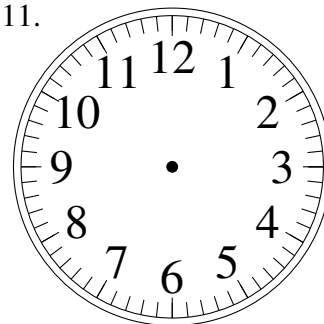
5:43.30

10.



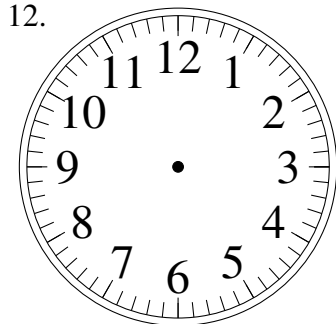
12:38.00

11.



1:04.00

12.

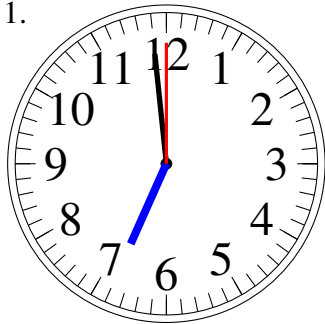


3:57.00

# Sketching Analog Clocks (C) Answers

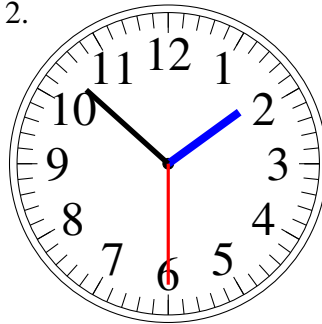
Sketch each time on the clock face above it.

1.



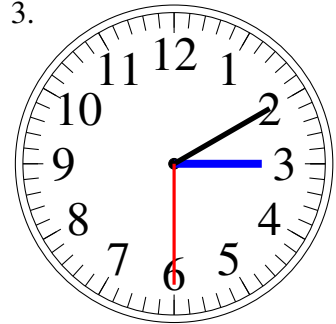
6:59.00

2.



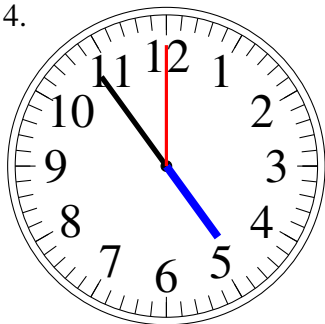
1:52.30

3.



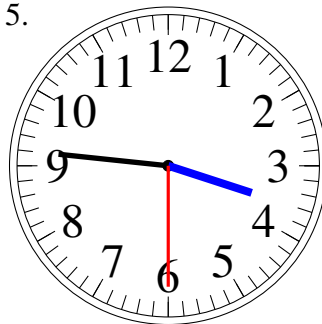
3:10.30

4.



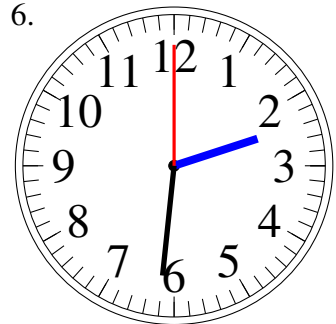
4:54.00

5.



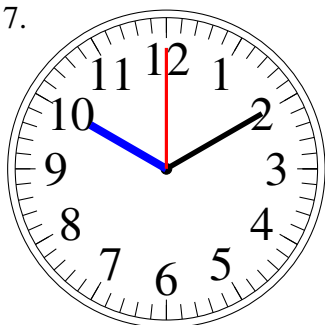
3:46.30

6.



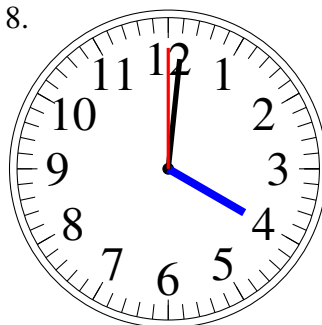
2:31.00

7.



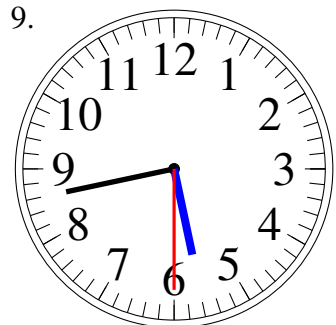
10:10.00

8.



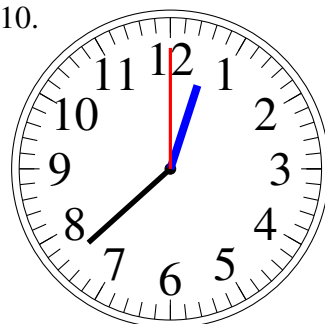
4:01.00

9.



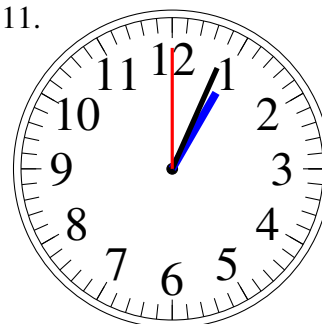
5:43.30

10.



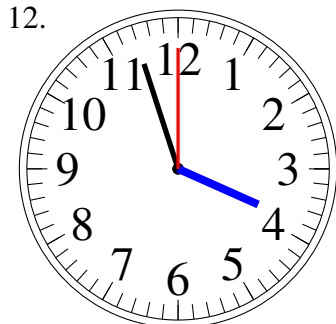
12:38.00

11.



1:04.00

12.

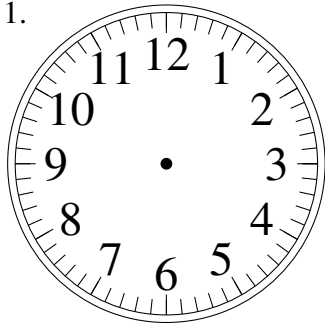


3:57.00

# Sketching Analog Clocks (D)

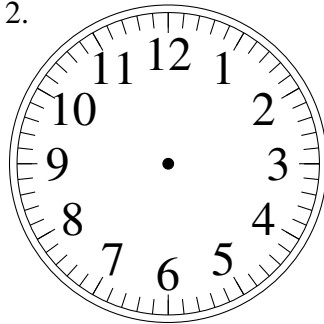
Sketch each time on the clock face above it.

1.



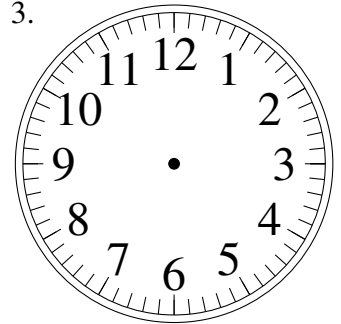
6:20.30

2.



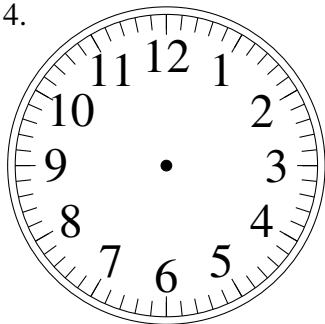
12:56.30

3.



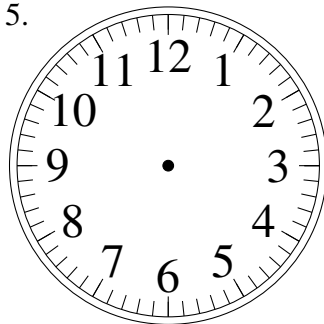
10:16.30

4.



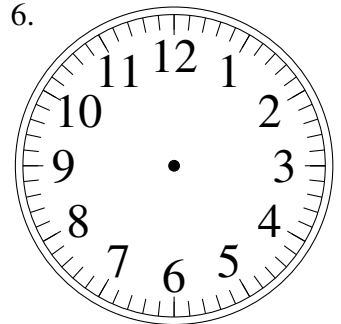
3:29.00

5.



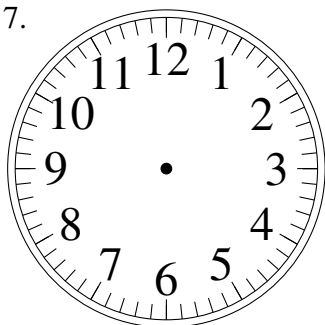
7:28.00

6.



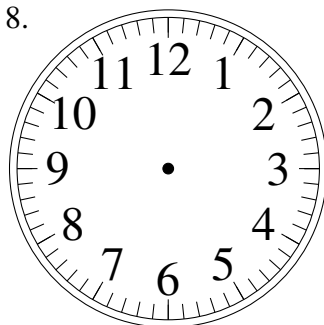
1:55.30

7.



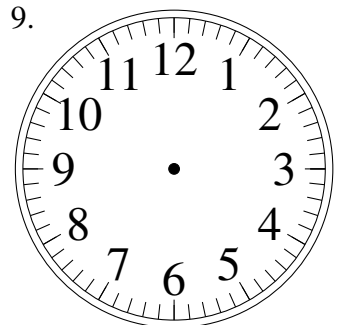
9:29.30

8.



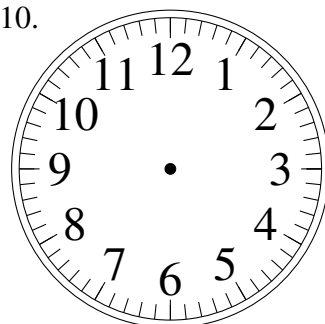
9:16.30

9.



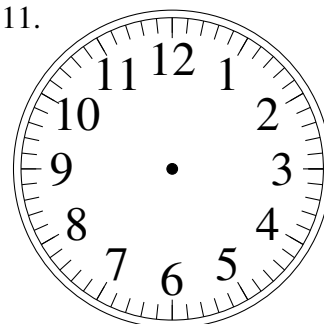
6:52.30

10.



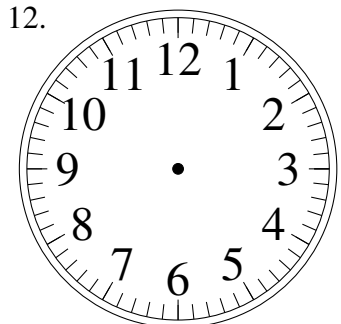
8:12.00

11.



11:14.00

12.

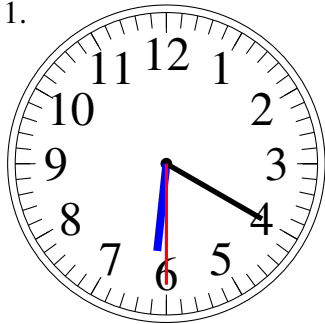


9:33.00

# Sketching Analog Clocks (D) Answers

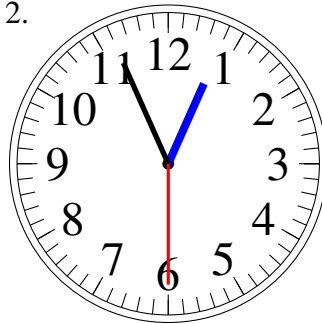
Sketch each time on the clock face above it.

1.



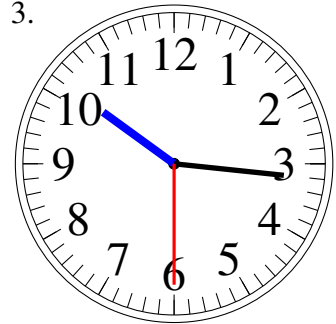
6:20.30

2.



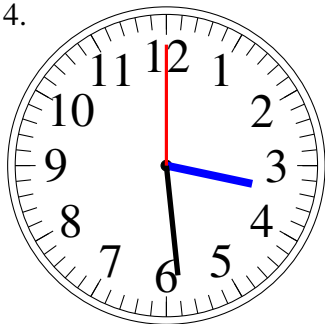
12:56.30

3.



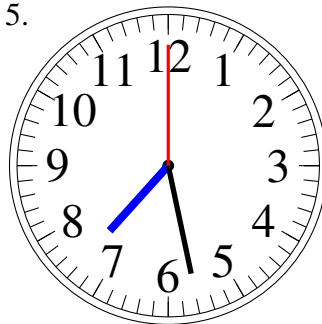
10:16.30

4.



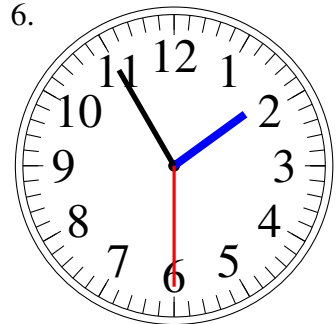
3:29.00

5.



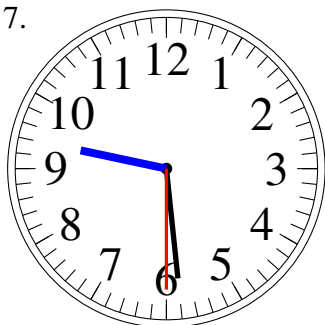
7:28.00

6.



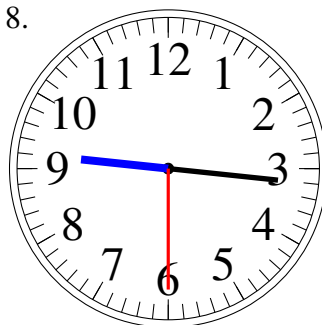
1:55.30

7.



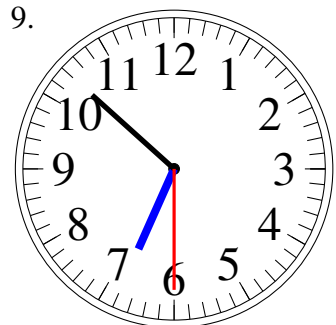
9:29.30

8.



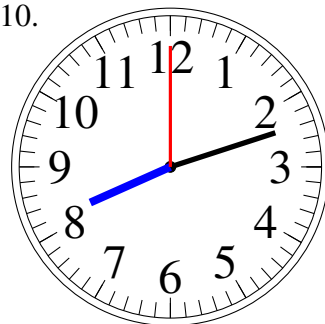
9:16.30

9.



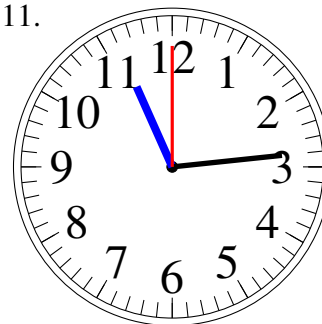
6:52.30

10.



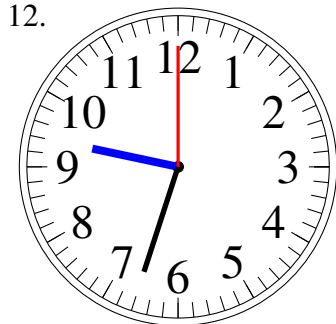
8:12.00

11.



11:14.00

12.



9:33.00



# Sketching Analog Clocks (E)

Sketch each time on the clock face above it.

1.



7:18.00

2.



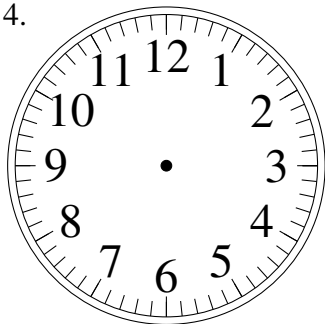
1:13.00

3.



5:26.30

4.



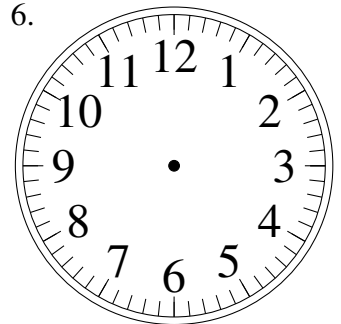
7:37.30

5.



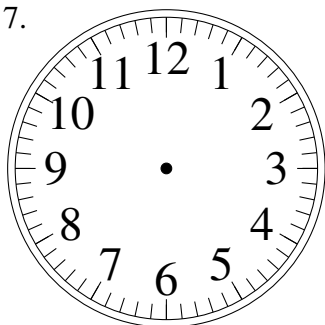
7:16.00

6.



1:20.00

7.



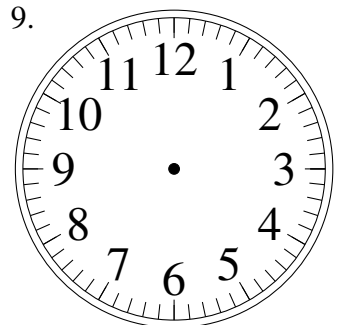
9:54.00

8.



8:04.30

9.



11:16.00

10.



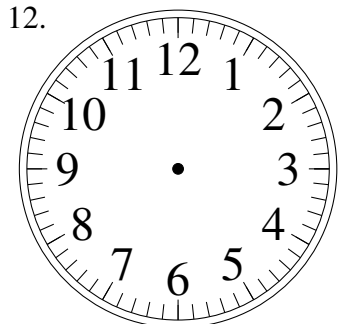
11:50.00

11.



4:24.00

12.

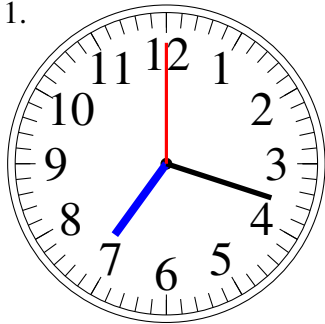


5:02.30

# Sketching Analog Clocks (E) Answers

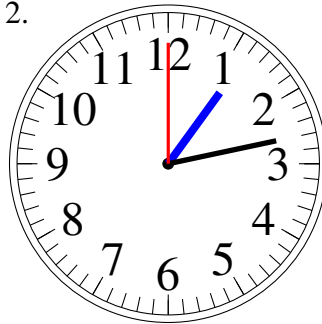
Sketch each time on the clock face above it.

1.



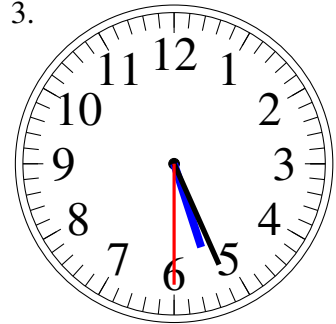
7:18.00

2.



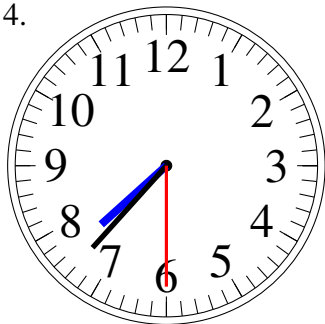
1:13.00

3.



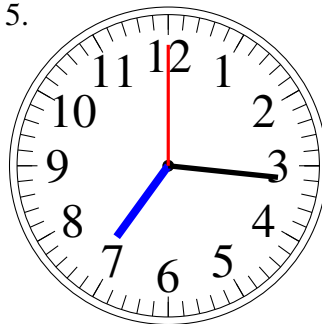
5:26.30

4.



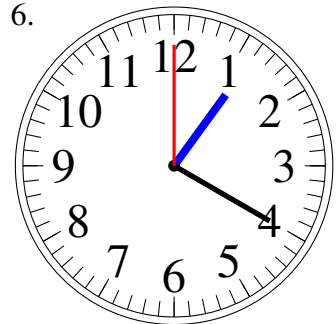
7:37.30

5.



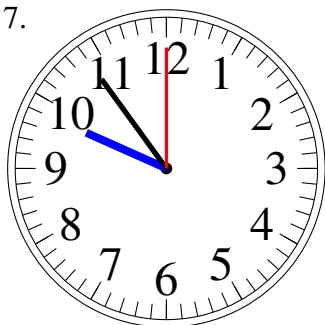
7:16.00

6.



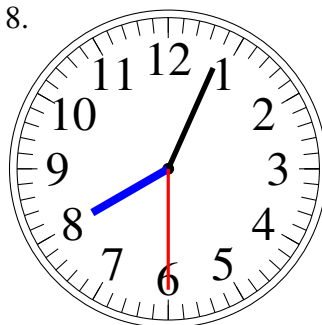
1:20.00

7.



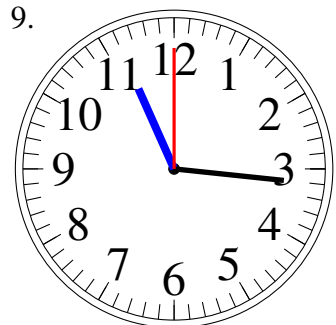
9:54.00

8.



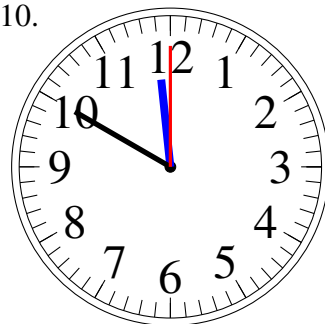
8:04.30

9.



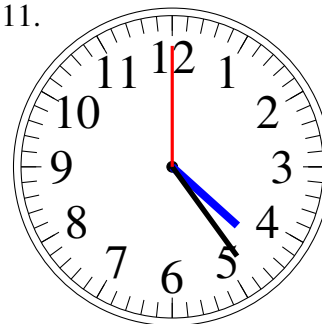
11:16.00

10.



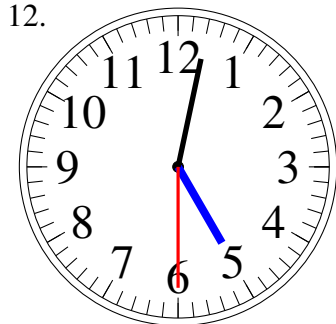
11:50.00

11.



4:24.00

12.



5:02.30

# Sketching Analog Clocks (F)

Sketch each time on the clock face above it.

1.



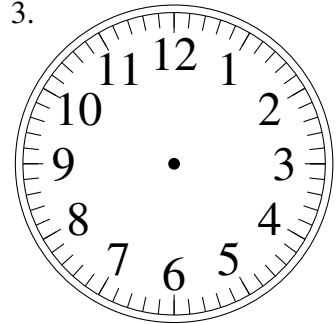
3:24.00

2.



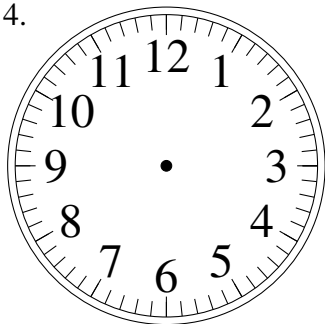
6:14.00

3.



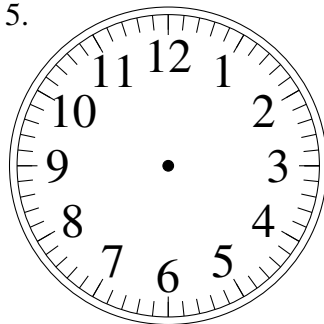
8:11.00

4.



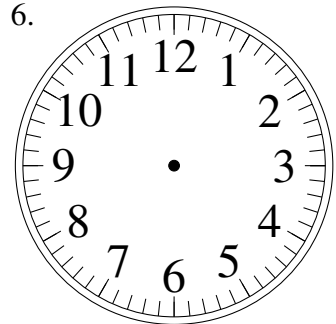
10:23.00

5.



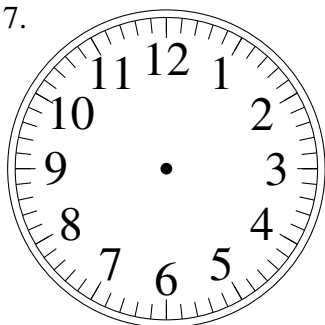
3:18.00

6.



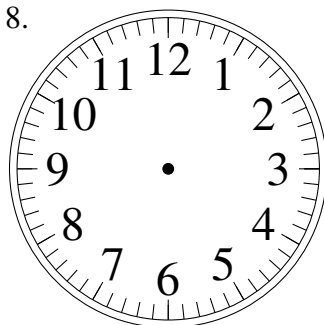
9:52.30

7.



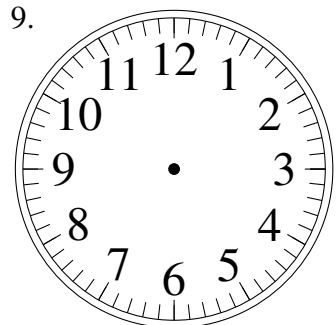
11:01.30

8.



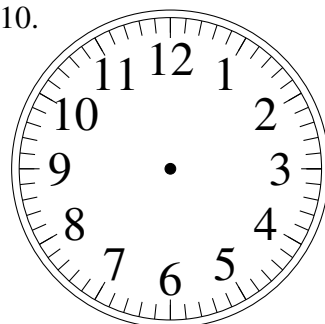
5:31.00

9.



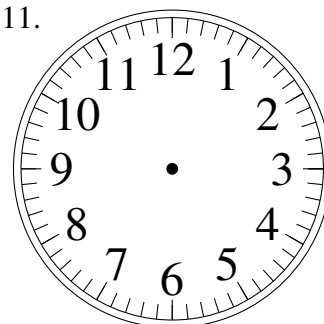
7:12.30

10.



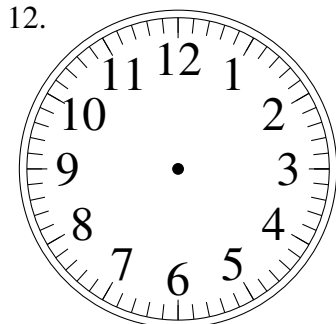
5:40.30

11.



9:31.00

12.

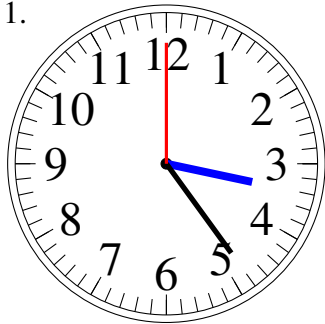


1:08.00

# Sketching Analog Clocks (F) Answers

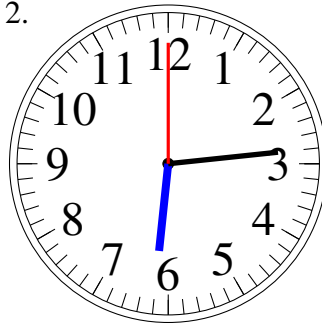
Sketch each time on the clock face above it.

1.



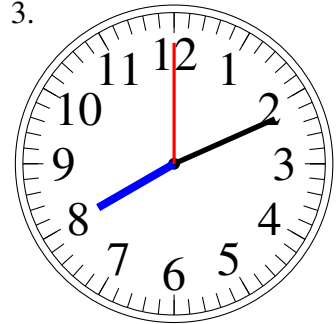
3:24.00

2.



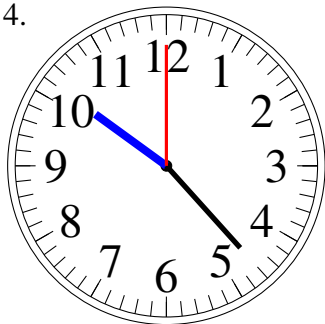
6:14.00

3.



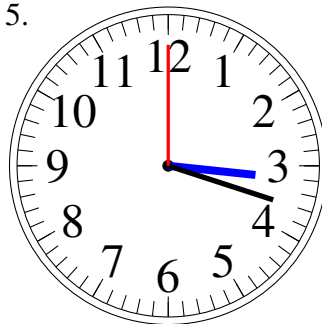
8:11.00

4.



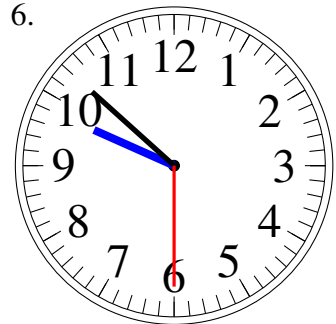
10:23.00

5.



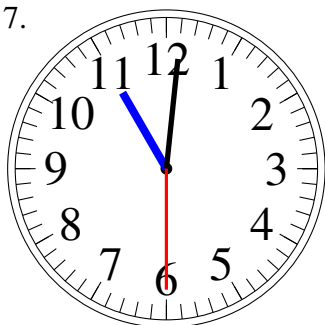
3:18.00

6.



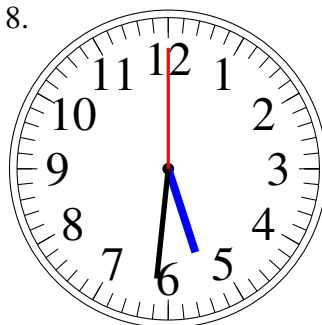
9:52.30

7.



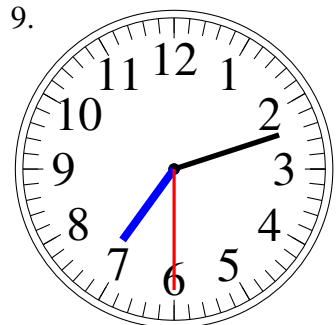
11:01.30

8.



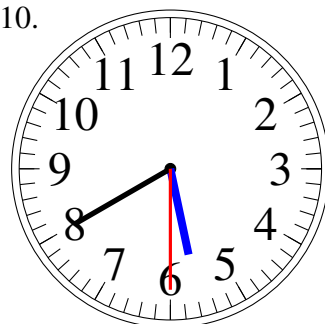
5:31.00

9.



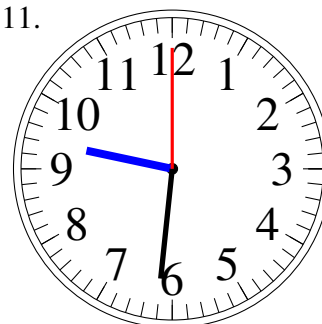
7:12.30

10.



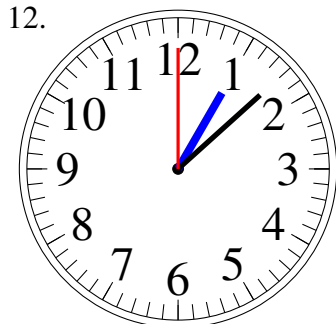
5:40.30

11.



9:31.00

12.

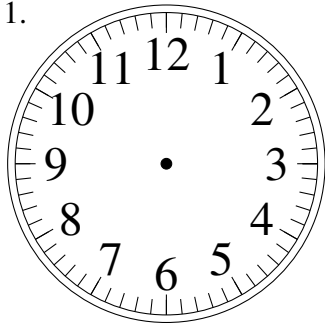


1:08.00

# Sketching Analog Clocks (G)

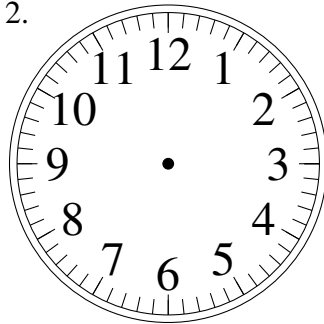
Sketch each time on the clock face above it.

1.



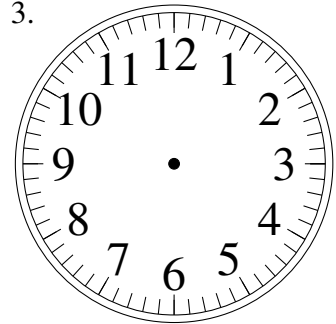
2:06.00

2.



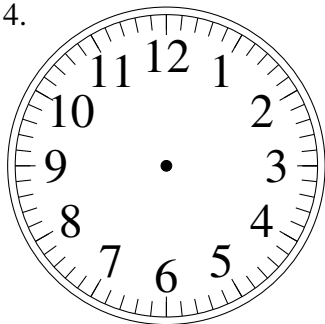
10:05.00

3.



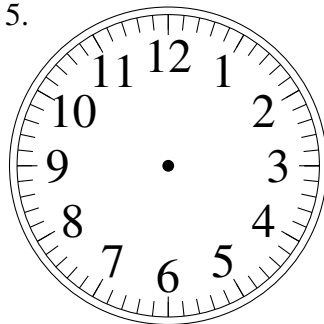
7:29.00

4.



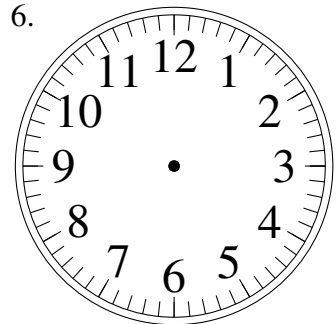
6:36.30

5.



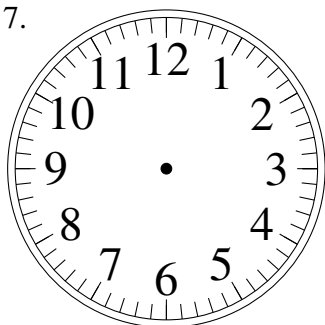
1:55.00

6.



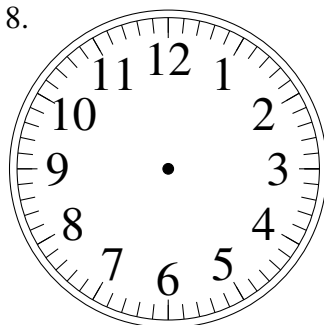
12:14.00

7.



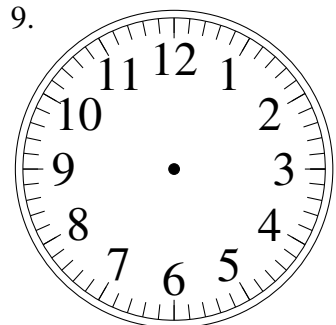
6:43.00

8.



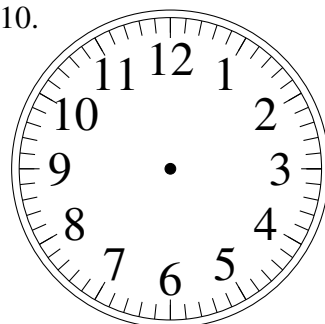
7:02.00

9.



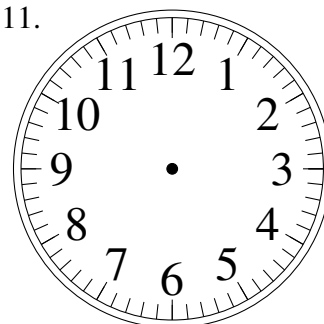
1:08.30

10.



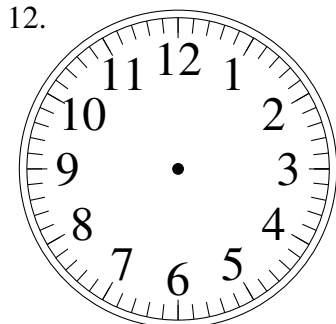
1:06.30

11.



3:15.30

12.

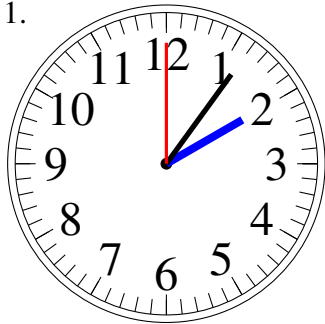


4:47.00

# Sketching Analog Clocks (G) Answers

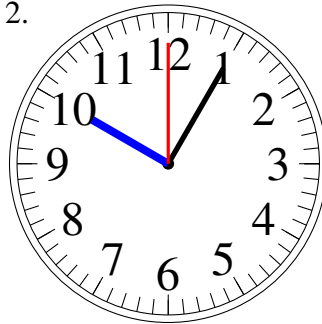
Sketch each time on the clock face above it.

1.



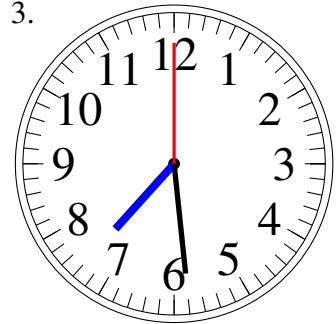
2:06.00

2.



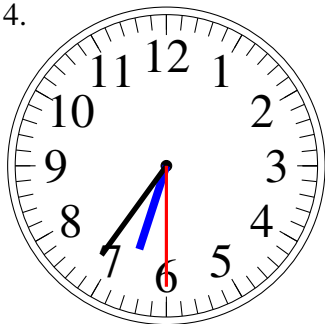
10:05.00

3.



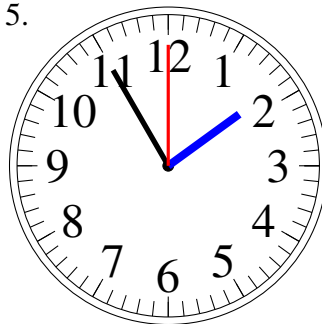
7:29.00

4.



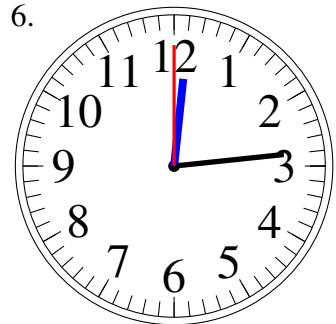
6:36.30

5.



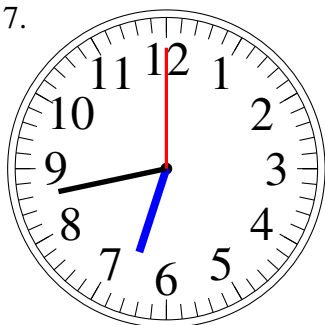
1:55.00

6.



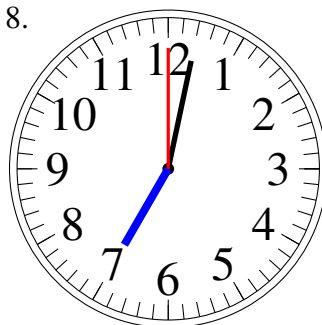
12:14.00

7.



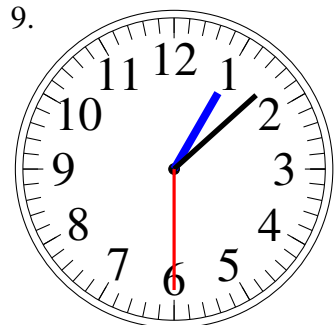
6:43.00

8.



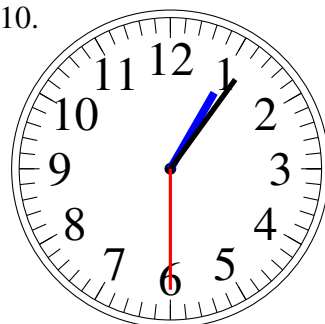
7:02.00

9.



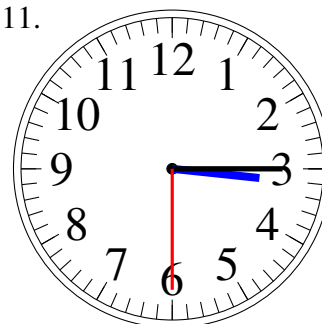
1:08.30

10.



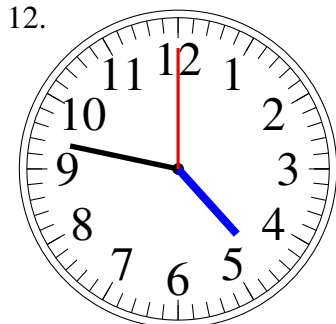
1:06.30

11.



3:15.30

12.

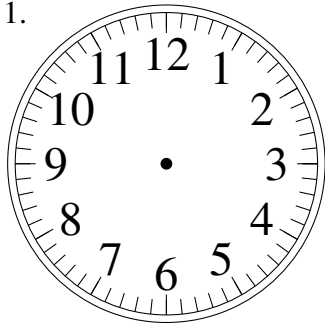


4:47.00

# Sketching Analog Clocks (H)

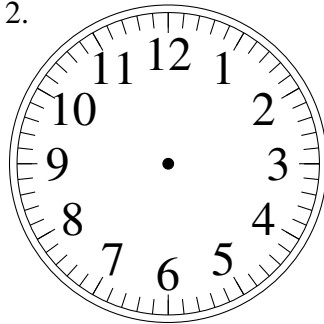
Sketch each time on the clock face above it.

1.



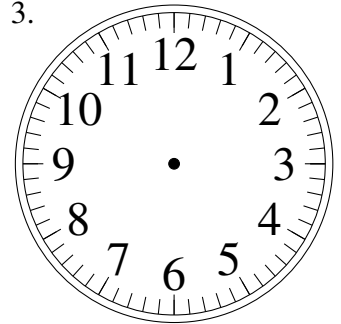
9:49.00

2.



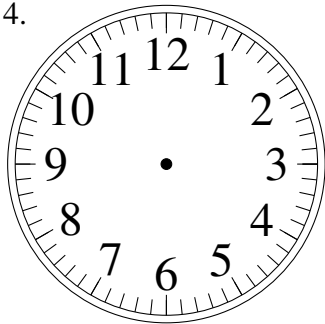
8:24.00

3.



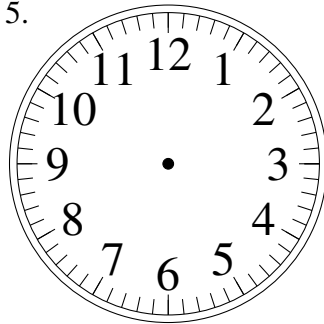
5:20.30

4.



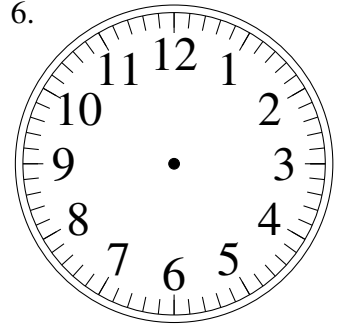
5:52.30

5.



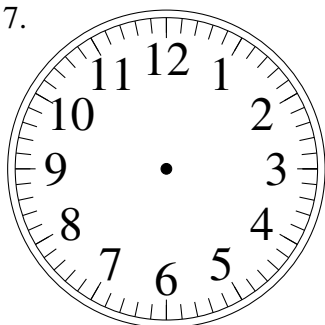
6:28.30

6.



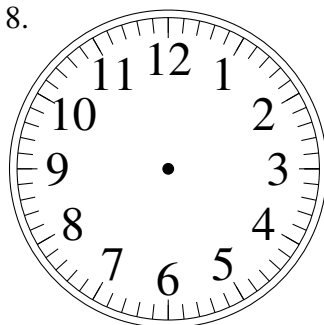
12:50.30

7.



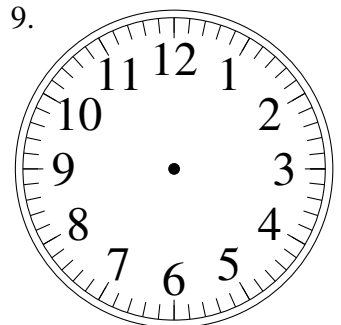
7:01.00

8.



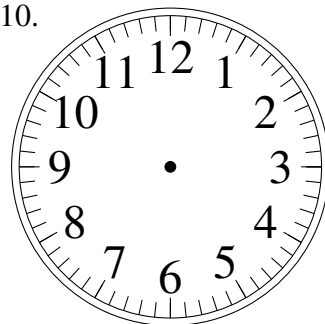
7:48.30

9.



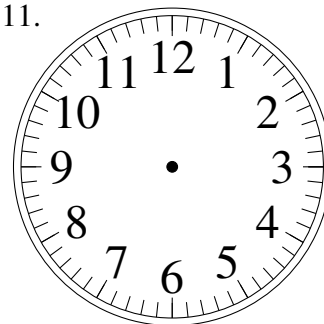
1:12.00

10.



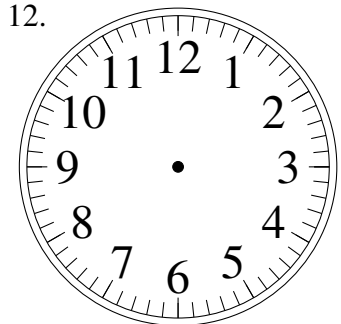
3:44.30

11.



2:07.30

12.

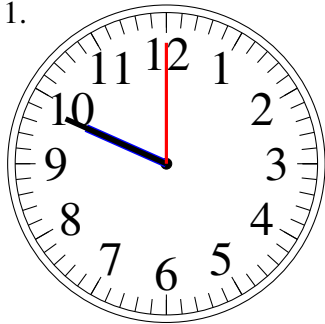


6:38.00

# Sketching Analog Clocks (H) Answers

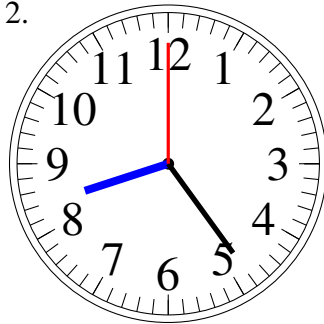
Sketch each time on the clock face above it.

1.



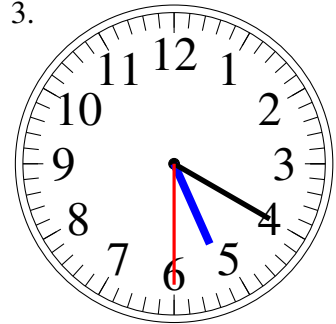
9:49.00

2.



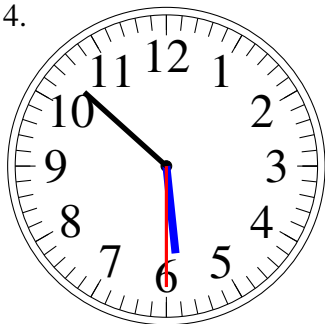
8:24.00

3.



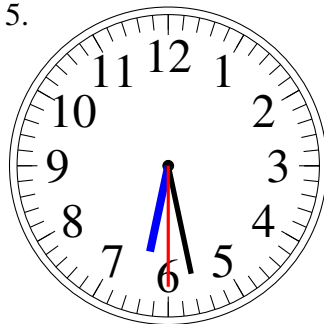
5:20.30

4.



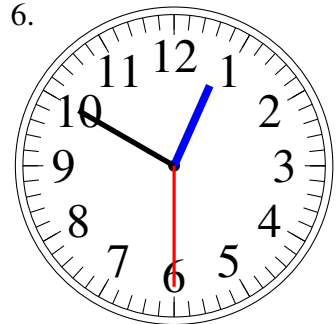
5:52.30

5.



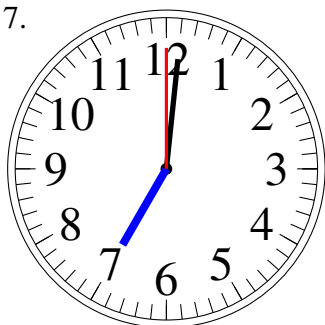
6:28.30

6.



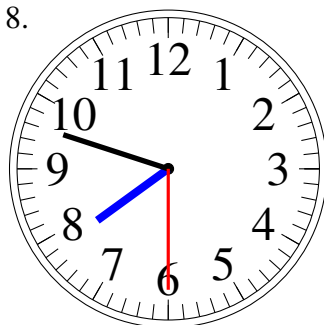
12:50.30

7.



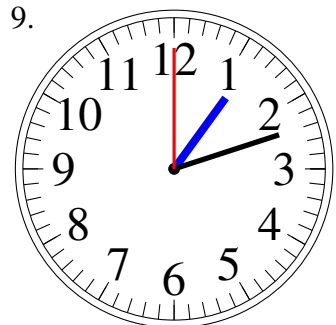
7:01.00

8.



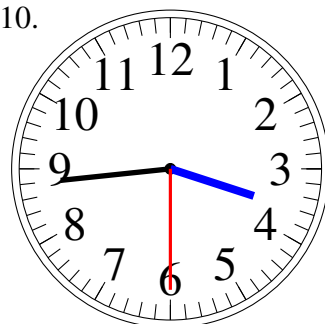
7:48.30

9.



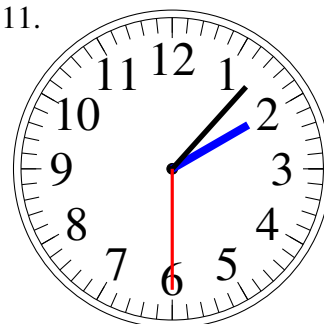
1:12.00

10.



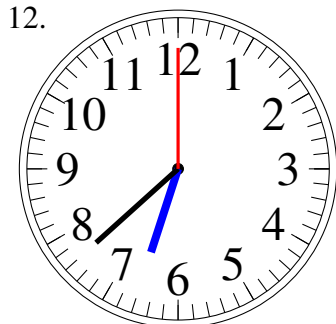
3:44.30

11.



2:07.30

12.



6:38.00



# Sketching Analog Clocks (I)

Sketch each time on the clock face above it.

1.



8:06.00

2.



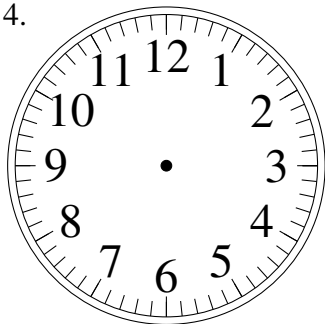
11:57.30

3.



12:16.00

4.



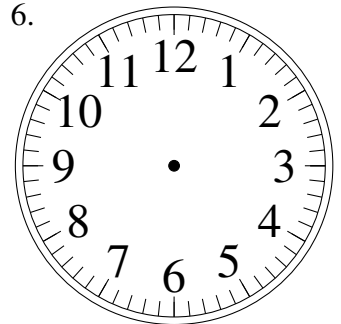
7:11.00

5.



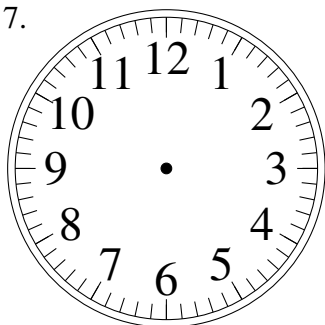
8:45.30

6.



6:42.00

7.



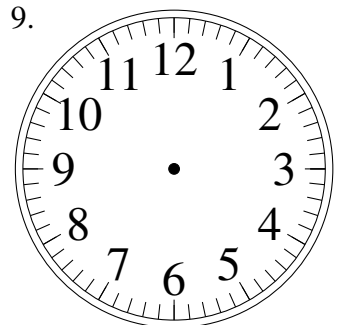
2:49.00

8.



8:50.30

9.



11:50.00

10.



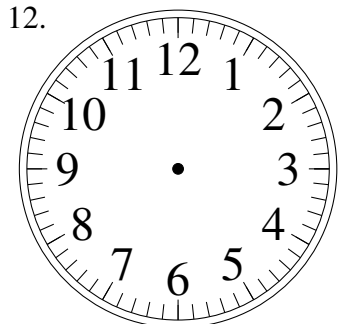
4:43.30

11.



10:38.30

12.

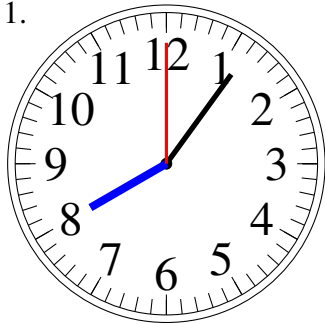


2:13.00

# Sketching Analog Clocks (I) Answers

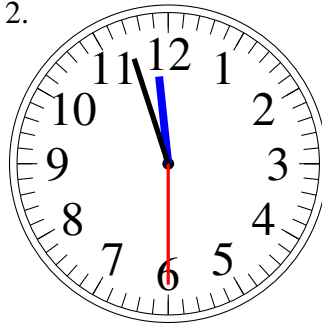
Sketch each time on the clock face above it.

1.



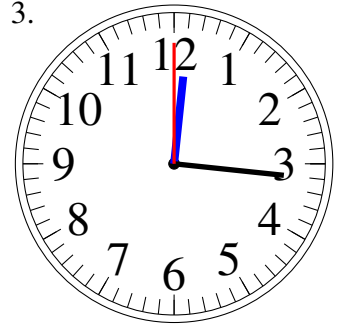
8:06.00

2.



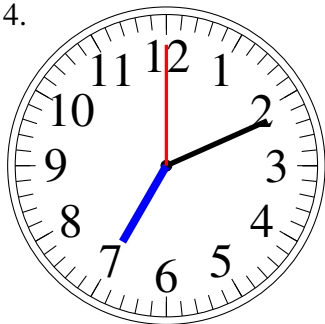
11:57.30

3.



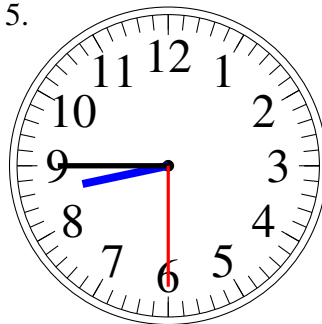
12:16.00

4.



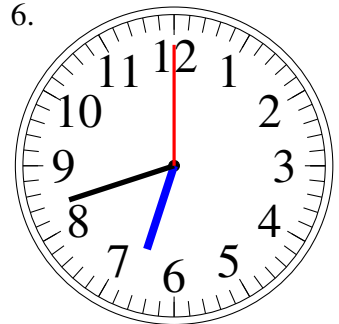
7:11.00

5.



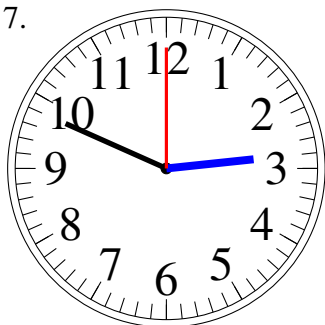
8:45.30

6.



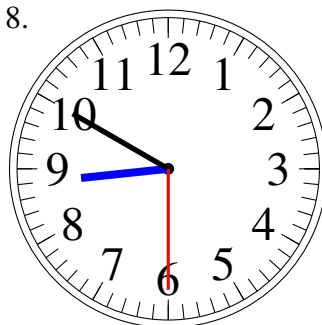
6:42.00

7.



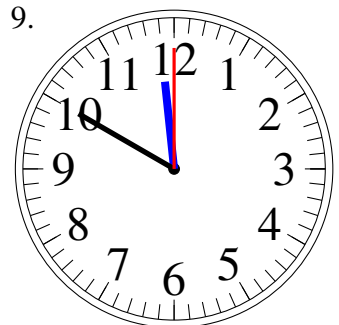
2:49.00

8.



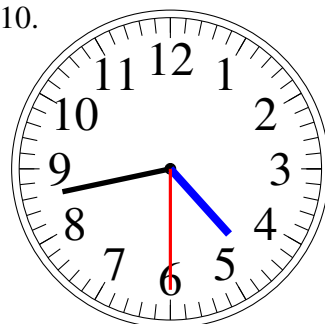
8:50.30

9.



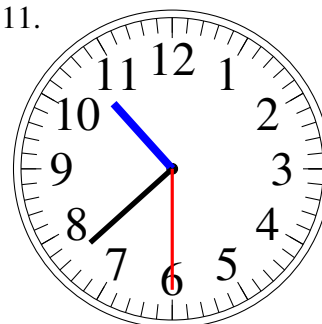
11:50.00

10.



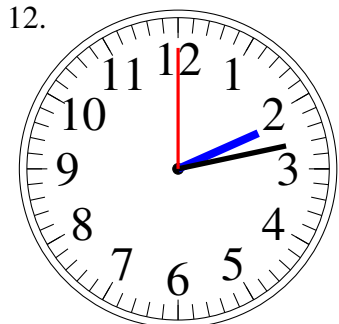
4:43.30

11.



10:38.30

12.



2:13.00

# Sketching Analog Clocks (J)

Sketch each time on the clock face above it.

1.



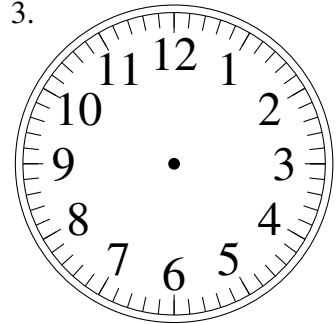
7:13.00

2.



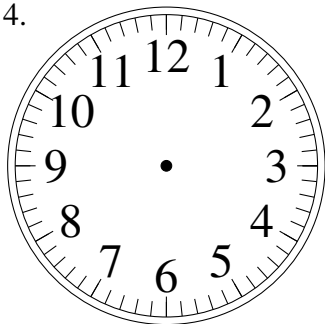
8:53.30

3.



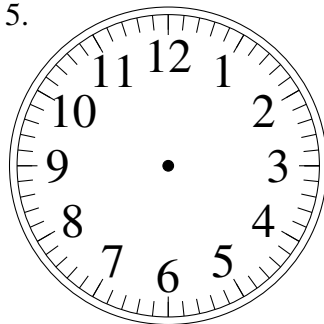
7:18.30

4.



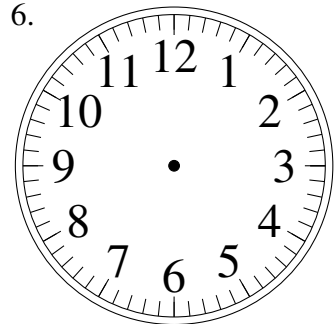
12:24.00

5.



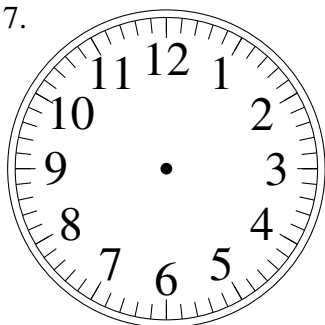
4:26.30

6.



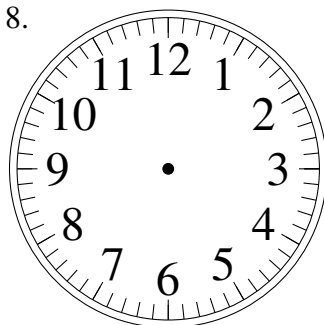
7:07.30

7.



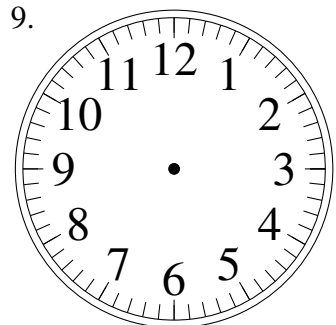
6:02.30

8.



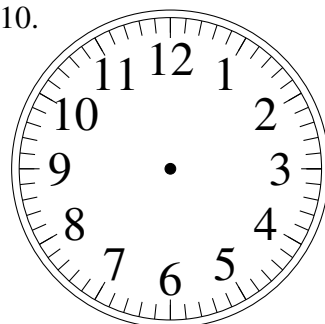
12:22.30

9.



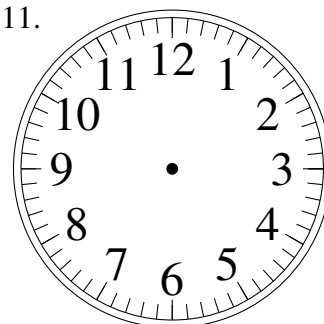
8:33.30

10.



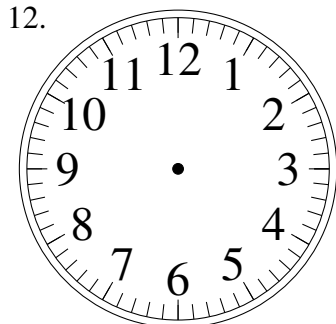
2:58.30

11.



7:34.30

12.

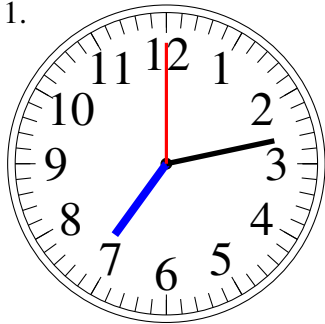


2:32.30

# Sketching Analog Clocks (J) Answers

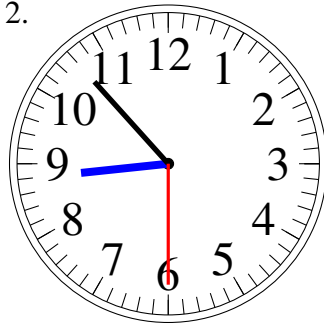
Sketch each time on the clock face above it.

1.



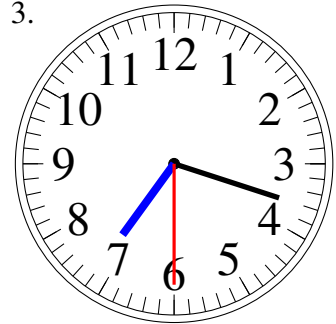
7:13.00

2.



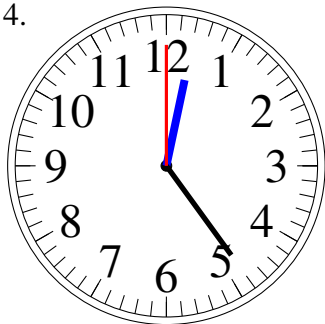
8:53.30

3.



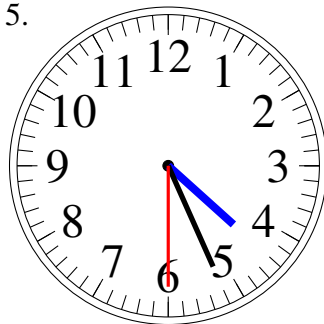
7:18.30

4.



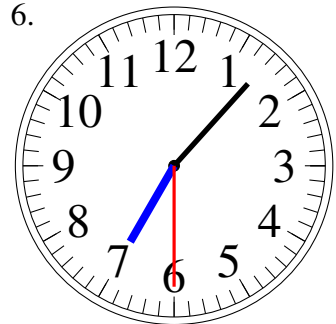
12:24.00

5.



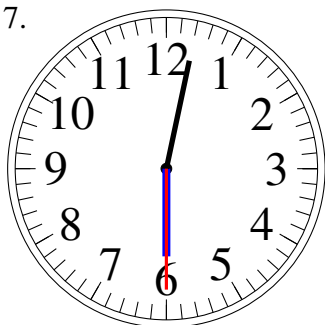
4:26.30

6.



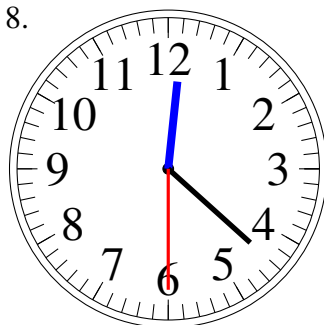
7:07.30

7.



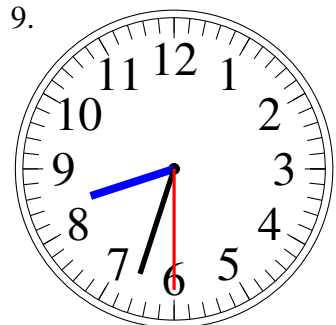
6:02.30

8.



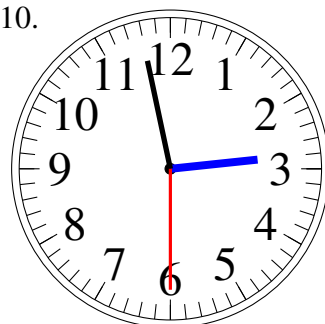
12:22.30

9.



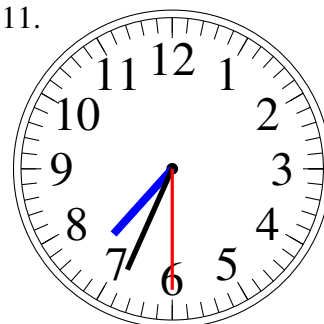
8:33.30

10.



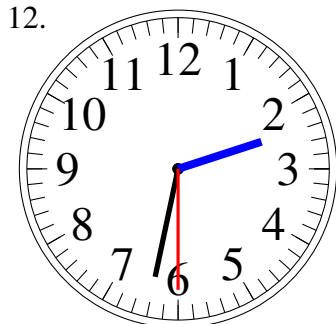
2:58.30

11.



7:34.30

12.



2:32.30